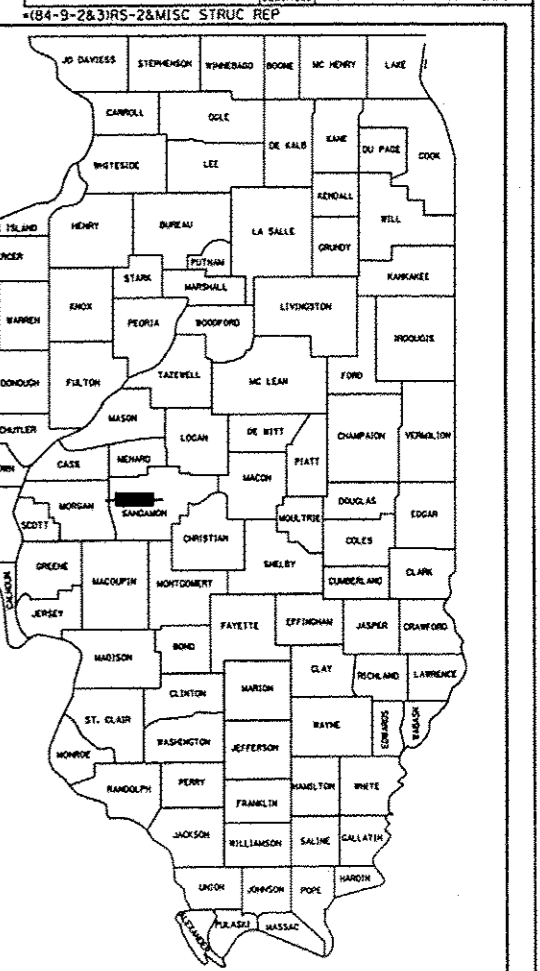


F.A.I. RTE.	SECTION	COUNTY	TOTAL SHEETS	SHEET NO.
72		SANGAMON	163	1
ILLINOIS			CONTRACT NO. 72B54	

D-96-010-08



LOCATION OF SECTION INDICATED THUS: [Black box symbol]

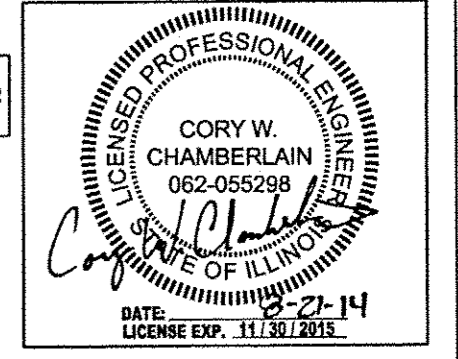
STATE OF ILLINOIS
DEPARTMENT OF TRANSPORTATION
DIVISION OF HIGHWAYS

SUBMITTED August 27, 2014
Roger Z. Driskell
DEPUTY DIRECTOR OF HIGHWAYS, REGION ENGINEER

Oct 17, 2014
John D. Baranzelli P.E.
ENGINEER OF DESIGN AND ENVIRONMENT

Oct 17, 2014
Omer Osman P.E.
DIRECTOR OF HIGHWAYS, CHIEF ENGINEER

PRINTED BY THE AUTHORITY OF THE STATE OF ILLINOIS



STATE OF ILLINOIS
DEPARTMENT OF TRANSPORTATION
DIVISION OF HIGHWAYS

**PROPOSED
HIGHWAY PLANS**

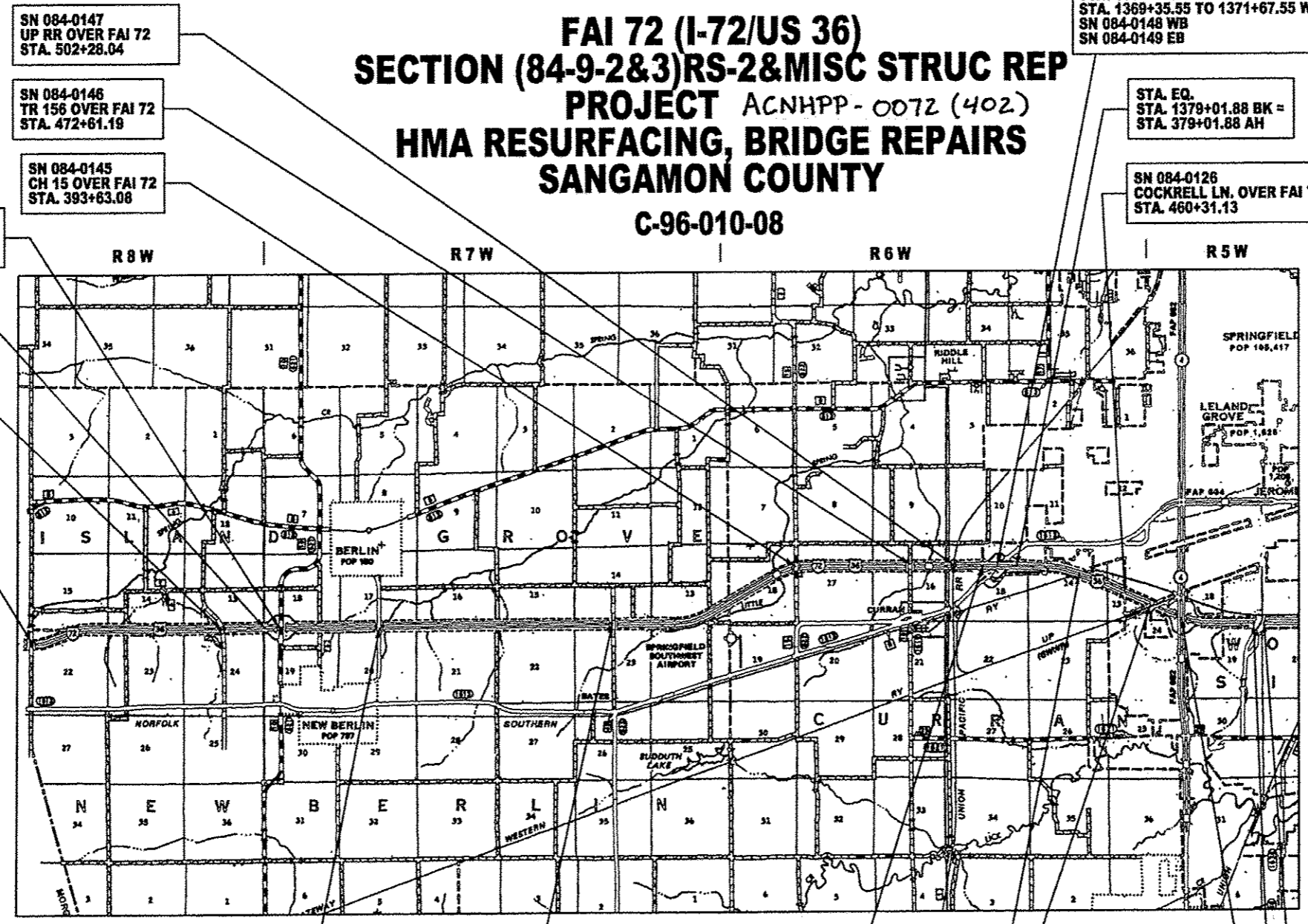
FAI 72 (I-72/US 36)
SECTION (84-9-2&3)RS-2&MISC STRUC REP
PROJECT ACNHPP-0072 (402)
HMA RESURFACING, BRIDGE REPAIRS
SANGAMON COUNTY

C-96-010-08

BRIDGE OMISSION:
STA. 1368+34.01 TO 1370+66.01 EB
STA. 1369+35.55 TO 1371+67.55 WB
SN 084-0148 WB
SN 084-0149 EB

STA. EQ.
STA. 1379+01.88 BK =
STA. 379+01.88 AH

SN 084-0126
COCKRELL LN. OVER FAI 72
STA. 460+31.13



INDEX OF SHEETS

- 1 COVER SHEET
- 2 GENERAL NOTES, COMMITMENTS, AND HIGHWAY STANDARDS
- 3 - 11 SUMMARY OF QUANTITIES
- 12 - 26 SCHEDULE OF QUANTITIES
- 27 - 30 TYPICAL SECTIONS
- 31 - 92 PLAN SHEETS
- 93 - 104 MAINTENANCE OF TRAFFIC PLANS
- 105 - 117 MISCELLANEOUS BRIDGE EXPANSION JOINT REPLACEMENTS
- 118 - 120 SN 084-0142 (WAVERLY RD.) REPAIR PLANS
- 121 - 126 SN 084-0148/0149 (WABASH) REPAIR PLANS
- 127 - 129 SN 084-0127/0128 (NSRR) REPAIR PLANS
- 130 - 131 SN 084-0126 (COCKRELL LN.) REPAIR PLANS
- 131 - 137 SN 084-0136/0137 (IL RTE 4) REPAIR PLANS
- 138 - 152 SN 084-0185 (CHATHAM RD.) REPAIR PLANS
- 153 - 163A MISCELLANEOUS DETAILS

HIGHWAY STANDARDS
SEE SHEET NO. 2

SN 084-0147
UP RR OVER FAI 72
STA. 502+28.04

SN 084-0146
TR 156 OVER FAI 72
STA. 472+61.19

SN 084-0145
CH 15 OVER FAI 72
STA. 393+63.08

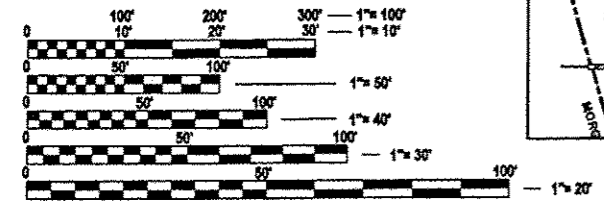
SN 084-0142
CH 10 OVER FAI 72
STA. 36+10.14

BEGIN IMPROVEMENT
I-72 STA. 10+00.00

SN 084-0141
TR 18 OVER FAI 72
STA. 327+08.02

SN 084-0140
TR 4 OVER FAI 72
STA. 194+80.28

FULL SIZE PLANS HAVE BEEN PREPARED USING STANDARD ENGINEERING SCALES. REDUCED SIZED PLANS WILL NOT CONFORM TO STANDARD SCALES. IN MAKING MEASUREMENTS ON REDUCED PLANS, THE SCALES BELOW MAY BE USED.



J.U.L.I.E.
JOINT UTILITY LOCATION INFORMATION FOR EXCAVATION
1-800-892-0123
OR 811

SN 084-0143
OLD CH 10 OVER FAI 72
STA. 101+25.35

SN 084-0144
TR 94 OVER FAI 72
STA. 260+28.21

STA. EQ.
STA. 506+80.50 BK =
STA. 1345+01.88 AH

SN 084-0125
GWR RR OVER FAI 72
STA. 480+89.00

SN 084-0185
CHATHAM RD OVER FAI 72
STA. 555+29.79

END IMPROVEMENT
I-72 STA. 554+00.00

SN 084-0136
SN 084-0137
IL RTE 4 OVER FAI 72
STA. 502+60.00

PROJECT ENGINEER : VICTOR YOUNG (217) 524-0472
PROJECT MANAGER : VINCE MADONIA (217) 785-9046
CONTRACT NO. 72B54



FAI 72
PRINCIPAL ARTERIAL/INTERSTATE
ADT (2015) 16,950
ADT (2035) 21,020
SU (2015) 370
MU (2015) 2,190
PV (2015) 14,390

NET LENGTH OF FAI 72 = 70,122.62 FT = 13.281 MILES
TOTAL LENGTH OF PROJECT = 70,578.62 FT = 13.367 MILES

BRIDGE OMISSION:
STA. 422+98.91 TO 425+22.91 EB
STA. 424+14.79 TO 426+38.79 WB
SN 084-0127 EB
SN 084-0128 WB