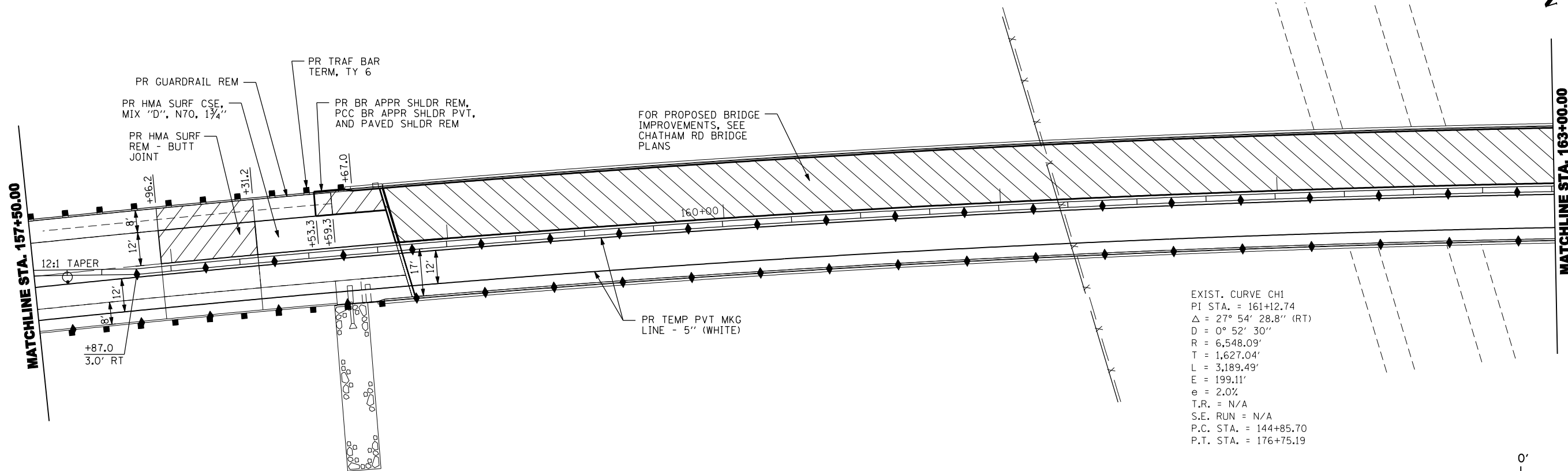
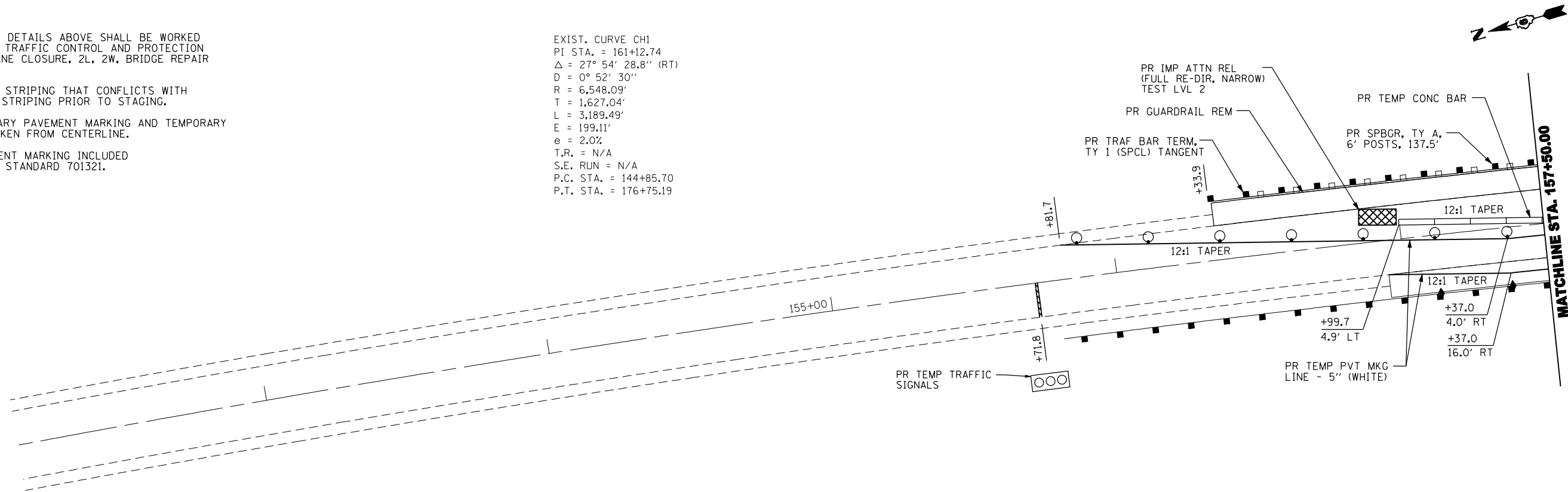


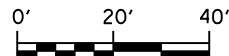
**NOTES:**

1. THE TRAFFIC CONTROL DETAILS ABOVE SHALL BE WORKED IN CONJUNCTION WITH TRAFFIC CONTROL AND PROTECTION STANDARD 701321, "LANE CLOSURE, 2L, 2W, BRIDGE REPAIR WITH BARRIER".
2. REMOVE ALL EXISTING STRIPING THAT CONFLICTS WITH STAGE CONSTRUCTION STRIPING PRIOR TO STAGING.
3. OFFSETS FOR TEMPORARY PAVEMENT MARKING AND TEMPORARY CONCRETE BARRIER TAKEN FROM CENTERLINE.
4. COST OF TEMP PAVEMENT MARKING INCLUDED IN COST FOR HIGHWAY STANDARD 701321.

EXIST. CURVE CH1  
 PI STA. = 161+12.74  
 $\Delta = 27^\circ 54' 28.8''$  (RT)  
 $D = 0^\circ 52' 30''$   
 $R = 6,548.09'$   
 $T = 1,627.04'$   
 $L = 3,189.49'$   
 $E = 199.11'$   
 $e = 2.0\%$   
 $T.R. = N/A$   
 $S.E. RUN = N/A$   
 $P.C. STA. = 144+85.70$   
 $P.T. STA. = 176+75.19$



EXIST. CURVE CH1  
 PI STA. = 161+12.74  
 $\Delta = 27^\circ 54' 28.8''$  (RT)  
 $D = 0^\circ 52' 30''$   
 $R = 6,548.09'$   
 $T = 1,627.04'$   
 $L = 3,189.49'$   
 $E = 199.11'$   
 $e = 2.0\%$   
 $T.R. = N/A$   
 $S.E. RUN = N/A$   
 $P.C. STA. = 144+85.70$   
 $P.T. STA. = 176+75.19$



design firm  
no. 184001036



USER NAME = gjameson  
 FILE NAME = D672854.pln sht chatham  
 PLOT SCALE = 40.0000' / IN.  
 PLOT DATE = 8/25/2014

DESIGNED -  
 REVISIONS -  
 DRAWN -  
 CHECKED -

STATE OF ILLINOIS  
 DEPARTMENT OF TRANSPORTATION

STAGE II TRAFFIC CONTROL CHATHAM RD.

SCALE: 1" = 20' SHEET NO. 3 OF 5 SHEETS STA. 152+00.00 TO STA. 163+00.00

F.A.I. RTE.	SECTION	COUNTY	TOTAL SHEETS	SHEET NO.
72		SANGAMON	163	102
•(84-9-2&3)RS-2&MISC STRUC REP			CONTRACT NO. 72B54	
ILLINOIS FED. AID PROJECT				