

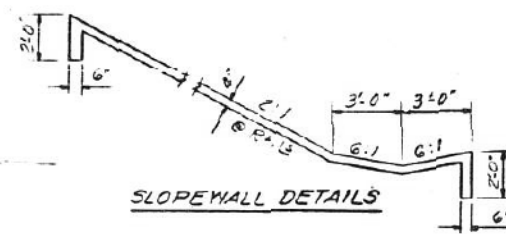
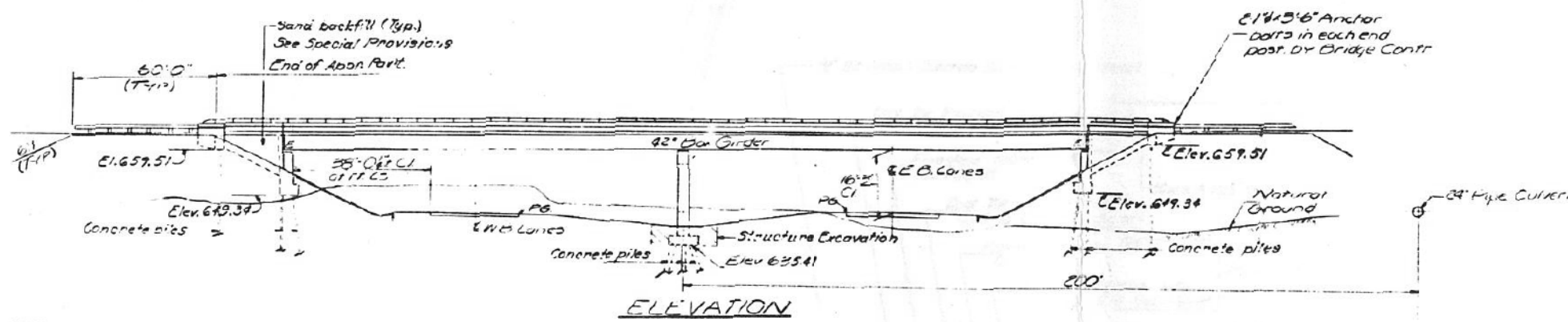
STATE OF ILLINOIS
DEPARTMENT OF TRANSPORTATION

DATE	NO.	DESCRIPTION	TOTAL SHEETS	SHEET NO.
4-28-68	118	REVISION	13	13
SHEET NO. 1				

GENERAL NOTES

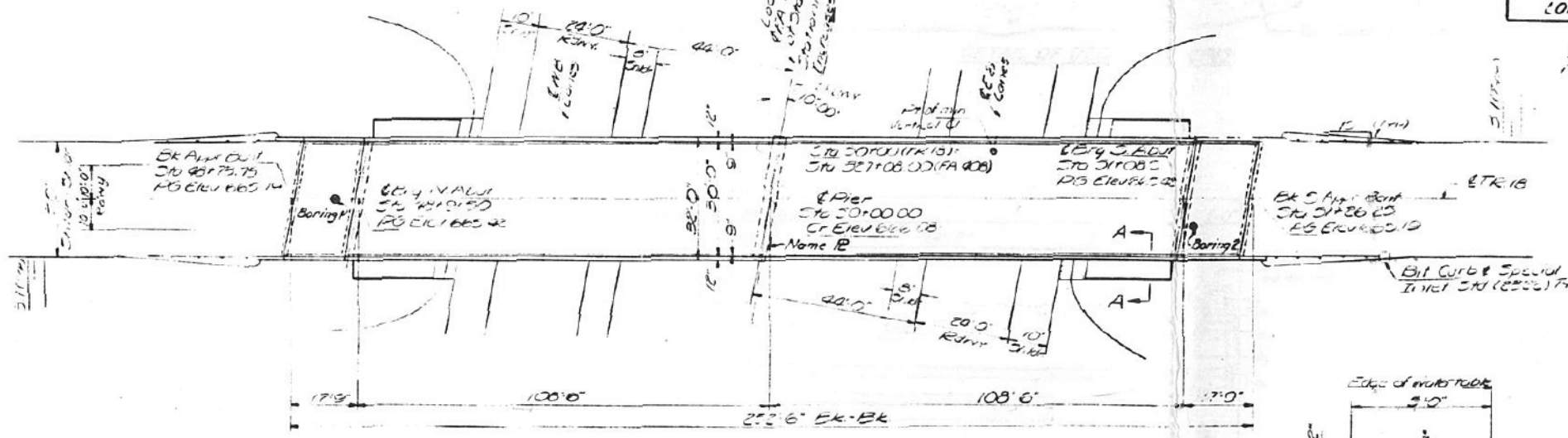
All reinforcement bars shall be lapped 24 dia. unless otherwise shown.
Fasteners shall be high strength bolts. Bolts 3/4"; cover holes 1/8"; unless otherwise noted.
Calculated weight of Structural Steel = 236,550 Lbs.
The basic lead silico chromate paint system shall be used for shop and field painting of Structural Steel.
Field welding of construction accessories will not be permitted to the bottom flange of beams or girders nor to the top flange for a distance equal to one-fourth the span length, each way from the pier supports. Field welding in other areas will be permitted only when approved by the Engineer.
Slope wall shall be reinforced with welded wire fabric 6"x6" mesh, weighing 38# per 100 sq. ft.
The Contractor shall drive 3 concrete test piles in a permanent location, 1 @ North Abutment, 1 @ South Bent and 1 @ Pier as directed by the Engineer before ordering the remainder of piles.
Concrete piles at abutments shall be driven in holes precast through the embankment in accordance with Article 513.09(c) of the Standard Specifications.

The embankment configuration shown shall be the minimum embankment that must be constructed prior to construction of the abutments.
The concrete rail section above the mandatory construction joint at the top of the slab shall be constructed of Class X Concrete, except the aggregates shall conform to the requirements of Standard Concrete Protective Coat shall not be applied to surfaces to which Coal Tar Inter-layer Protective Coat is applied.
All interior surfaces of Box Girders shall be given two shop coats of paint and spot painted in the field after cross frames and terms are removed. No additional field coat will be required for interior surfaces.
The exterior surface of Aluminum access doors shall be cleaned and given a washcoat pre-treatment in accordance with steel structures painting Council's Specifications SSPC-SP1 and SSPC-PT3 followed by the basic lead silico chromate painting specified for Structural Steel.
Anchor bolts shall be set before beams are set in place.



STATION 327+08.00
BUILT 19 BY
STATE OF ILLINOIS
F.A. RTE. 408 SEC. 84-9-1NB
F.A. PROJ. EBF-408-2 (13)
LOADING HS 15

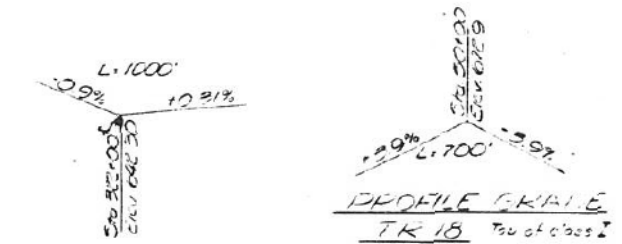
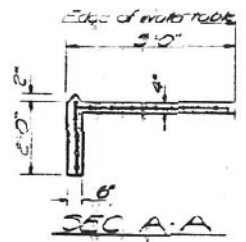
NAME PLATE
(See Std. 2113)



084-0141

TOTAL BILL OF MATERIAL

Item	Unit	Spec	Sub	Total
Structure Excavation	Cu. Yds.		50	50
Class X Concrete	Cu. Yds.	263.2	168.4	431.6
Reinforcement Bars	Lbs.	63,650	20,710	84,360
Bitum. Concrete Surface Course Class I	Tons	65		65
Protective Coat	Sq. Yds.	194		194
Structural Steel	L.S.	L.S.		L.S.
Steel Shear Connectors	Each	4800		4800
Aluminum Railing	Lin. Ft.	521		521
Concrete Piles	Lin. Ft.		1,147	1,147
Test Piles (Concrete)	Each		3	3
Name Plates	Each		1	1
Slope Wall (4')	Sq. Yds.		356	356
Coal Tar Interlayer Protective Coat	Sq. Yds.	795		795
Preformed Joint Sealer	Lin. Ft.	65		65
Sand Backfill	Cu. Yds.		145	145



PROFILE GRADE
FA RTE 408
(at median edge)

DESIGNED	
CHECKED	
DRAWN	
CHECKED	JIF

EXAMINED
APPROVED

DESIGN STRESSES
fc = 4000 psi (Sub., Curb, Parapet)
fc = 1000 psi (Super.)
fs = 20000 psi (Struct. Reinf.)
vc = 75 psi (Ftyes)
n = 10
Allow for 25#120 ft for NAT MS
Design Specifications 1969
AASHTO (as applicable)
LOADING HS 15-44

CURVE DATA F.A. 408
PI Sta 551+75.57
Δ = 0° 21' 18" Lt
L = 0'-00"
T = 532.51'
L = 1065.0'
R = 171,887.94'
E = 0.83'
PC Sta 538+43.86
PT Sta 557+07.86 (BK)
= 5+32.51 (AND)



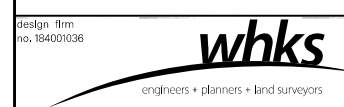
PROJECT EBF-408-2 (13)
GENERAL PLAN & ELEVATION
TR. 18 over F.A. RTE 408
F.A. RTE 408-SEC. 84-9-1NB
SANGAMON COUNTY
STATION 327+08.00 (FA 408)
STATION 50+00 (TR 18)

FOR INFORMATION ONLY.

STATE OF ILLINOIS
DEPARTMENT OF TRANSPORTATION

EXISTING PLANS
STRUCTURE NO. 084-0141

F.A. RTE.	SECTION	COUNTY	TOTAL SHEETS	SHEET NO.
72	.	SANGAMON	163	108
CONTRACT NO. 72B54				



USER NAME =	DESIGNED - CEH	REVISED
FILE NAME =	CHECKED - CWC	REVISED
PLOT SCALE =	DRAWN - DLH	REVISED
PLOT DATE =	CHECKED - CEH/CWC	REVISED