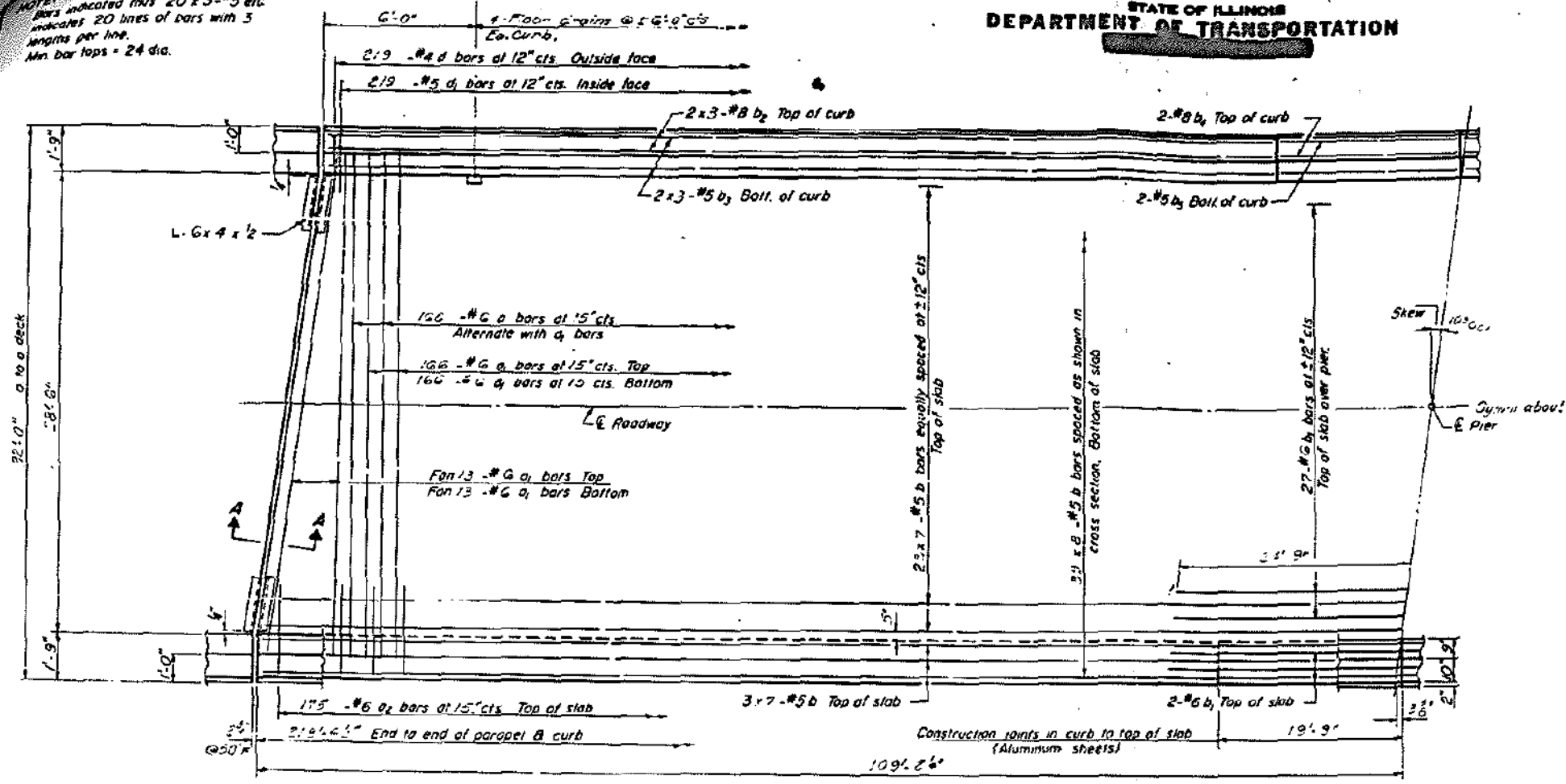


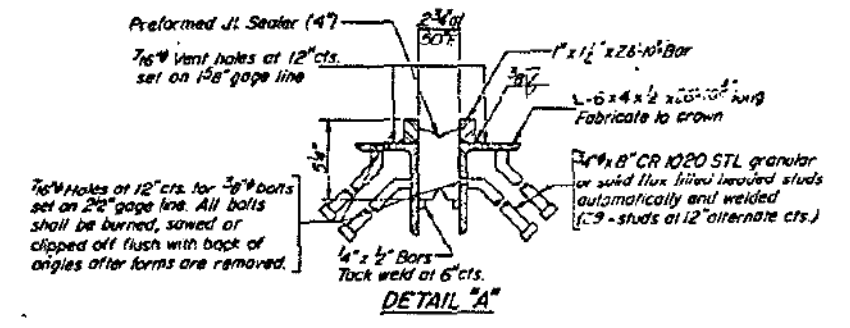
STATE OF ILLINOIS  
DEPARTMENT OF TRANSPORTATION

PROJECT NO.	DATE	DESIGNER	SCALE	SHEET NO.
408 TR		SANGAMON	48	13

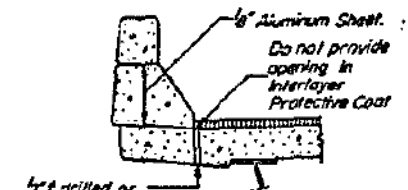
NOTE: Bars indicated thus 20 x 3-#5 etc. indicates 20 lines of bars with 3 lengths per line. Min. bar tops = 24 dia.



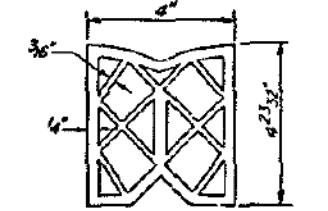
HALF PLAN



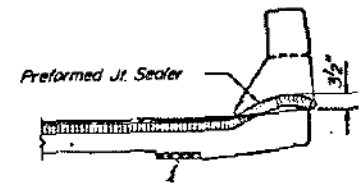
DETAIL "A"



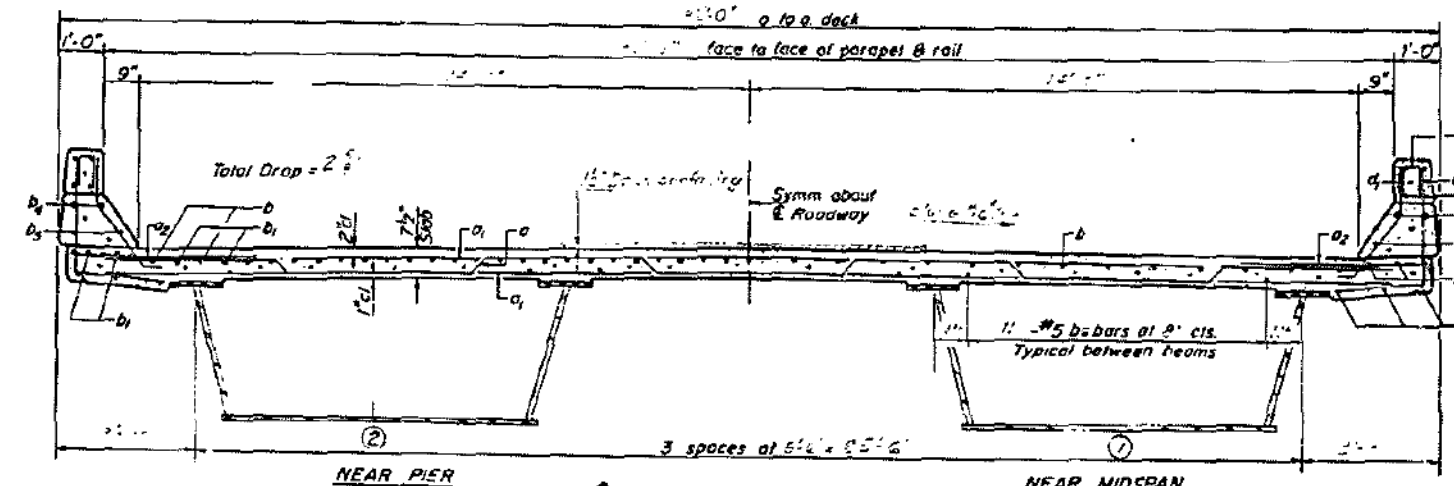
SECTION AT CURB JOINTS



PREFORMED JOINT SEALER (47)

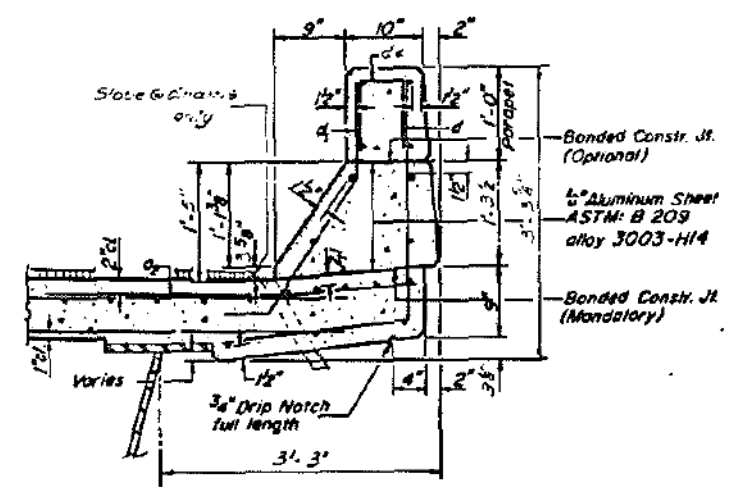


TYPICAL END OF SEALER TREATMENT



CROSS SECTION  
Looking South

NOTE: For placement of bars d<sub>1</sub> and d<sub>2</sub> thru e<sub>1</sub> see sheet #6



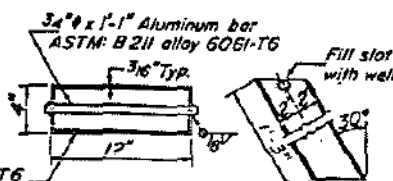
CURB SECTION

Cost of Aluminum Sheets shall be incidental to Class X Concrete.

Parapet Reinforcement and Class X Concrete are based on sheet # 6  
For Section A-A see sheet # 4

**BILL OF MATERIAL**

Bar	No.	Size	Length	Shape	
a	162	#6	31'-0"	—	
a <sub>1</sub>	384	#6	30'-0"	—	
a <sub>2</sub>	350	#6	4'-0"	—	
b	238	#5	32'-3"	—	
b <sub>1</sub>	37	#6	49'-6"	—	
b <sub>2</sub>	24	#8	31'-3"	—	
b <sub>3</sub>	24	#5	30'-9"	—	
b <sub>4</sub>	6	#8	19'-6"	—	
b <sub>5</sub>	8	#5	19'-6"	—	
b <sub>6</sub>	372	#5	26'-6"	—	
c	432	#4	44'-9"	—	
d	432	#5	5'-7"	—	
Reinforcement Bars				LBS.	53,100
Class X Concrete				Cu. Yds.	203.6



FLOOR DRAIN

Aluminum Sheets Welded  
ASTM: B 209 alloy 6061-T6  
or Aluminum Extrusions  
ASTM: B 221 alloy 6061-T6  
Cast incidental to Class X Concrete

FOR INFORMATION ONLY

STATE OF ILLINOIS  
DEPARTMENT OF TRANSPORTATION

EXISTING PLANS  
STRUCTURE NO. 084-0141

SHEET NO. 5 OF 13 SHEETS

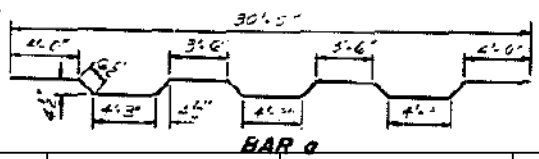
**SUPERSTRUCTURE**  
F.A. RT. 408 SEC. 84-9-1H  
SANGAMON CO.  
STA. 527+08.00

F.A.I. RTE.	SECTION	COUNTY	TOTAL SHEETS	SHEET NO.
72	.	SANGAMON	163	109
				CONTRACT NO. 72B54

ILLINOIS FED. AID PROJECT  
84-9-283RS-2&MISC STRUC REP

DESIGNED	
CHECKED	
DRAWN	
CHECKED	

EXAMINED	
DRAWN	
APPROVED	



BAR a

S-A-L (1515) 4-22-68  
whks  
engineers + planners + land surveyors

USER NAME =	DESIGNED - CEH	REVISED
FILE NAME =	CHECKED - CWC	REVISED
PLOT SCALE =	DRAWN - DLH	REVISED
PLOT DATE =	CHECKED - CEH/CWC	REVISED