

EXISTING STRUCTURE-S.N. 084-0144 Is 30'-0" wide by 246'-0" Bk. to Bk. Approach Bents. 2 main spans and 2 approach spans. This structure carries T.R. 94 (Bates Rd) over F.A.I. Rte. 72

This improvement includes removal and installation of a bituminous concrete wearing surface, placement of a waterproofing membrane system and the removal and installation of the expansion joints.

TOTAL BILL OF MATERIALS		
ITEM	UNIT	TOTAL
① SILICONE JOINT SEALER	FT.	55
CONCRETE SUPERSTRUCTURE	CU. YD.	5.4
CONCRETE REMOVAL	CU. YD.	5.5
BITUMINOUS CONCRETE REMOVAL (DECK)	SQ. YD.	725
BITUMINOUS CONCRETE SURFACE, CSE., MIX. C, CL. 1, TYPE 2	TON	68.5
WATERPROOFING MEMBRANE SYSTEM	SQ. YD.	725
① DECK SLAB REPAIR (PARTIAL)	SQ. YD.	17
REINFORCEMENT BARS, EPOXY COATED	LBS.	1,150
BAR SPLICERS	EACH	10
① POLYMER CONCRETE	CU. FT.	3.9

① SEE SPECIAL PROVISIONS

F.A.I. Rte.	SEC.	COUNTY	TOTAL SHEETS	SHEET NO.
72	6	SANGAMON	302	222
FED. ROAD DIST. NO. 1				
ILLINOIS				
PROJECT				

* F.A.I. 72 & F.A.P. 662
** DISTRICT 6 RESURFACING 2001 & 31-7

SHEET NO. 1
4 SHEETS

GENERAL NOTES

Plan dimensions and details relative to existing structure have been taken from existing plans and are subject to nominal construction variations. It shall be the Contractor's responsibility to verify such dimensions and details in the field and make necessary approved adjustments prior to construction or ordering of materials. Such variations shall not be cause for additional compensation for a change in the scope of the work, however, the Contractor will be paid for the quantity actually furnished at the unit price bid for the work.

Reinforcement bars shall conform to AASHTO M-31, M-42 or M-53, Grade 60.

Prior to pouring the new concrete for the deck, all loose rust, loose mill scale, and other loose potentially detrimental foreign material shall be removed from the surfaces of the beams or girders in contact with concrete. The cost of this work will be included in the pay item covering removal of the existing concrete. All heavy rust and other tightly adhered potentially detrimental foreign matter shall also be removed from the surfaces of the beams or girders in contact with concrete. Tightly adhered paint may remain unless otherwise noted. This removal shall be accomplished by methods that will not damage the steel. The cost of this work shall be paid for according to article 109.04 of the Standard Specifications.

Existing reinforcement bars extending into the removal area shall be cleaned, straightened and incorporated into the new construction. Any reinforcement bars that are damaged during concrete removal shall be replaced with an approved bar splicer or anchorage system. Cost included with Concrete Removal.

Areas of deck repairs shown are estimated. The Engineer shall show actual locations of deck repairs on As-built Plans.

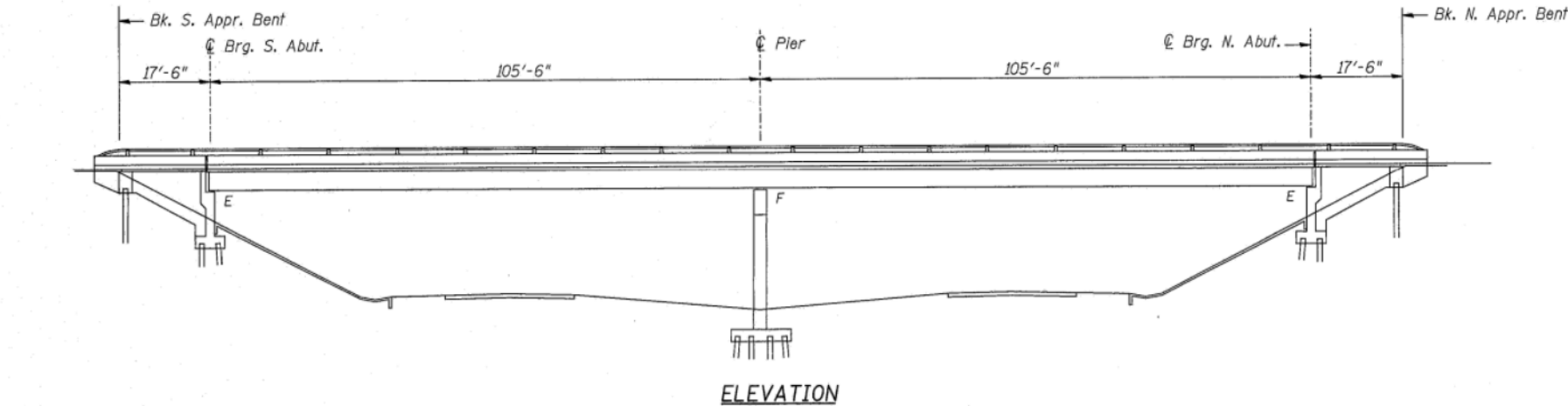
The existing steel coating contains lead. The Contractor should take appropriate precautions to deal with the presence of lead on this project.

See Sh# 2 of 4 for section A-A.

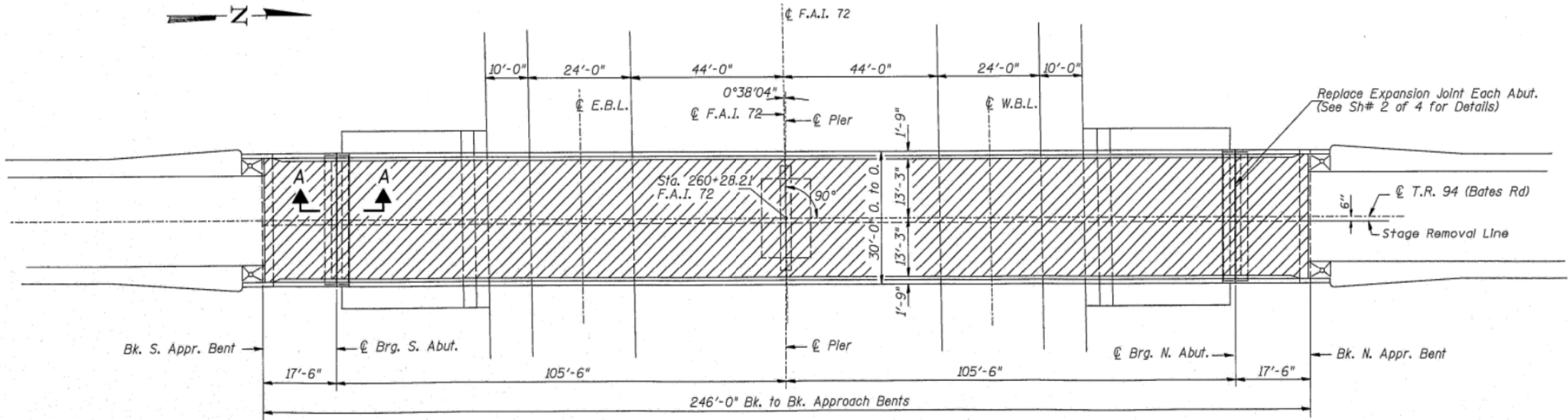
Note: During stage construction the existing inlets shall be covered with a suitable steel plate and temporarily fill level to the existing grade with Bituminous Concrete (Hot Mix). Priming is not required. This Bituminous Concrete material shall be removed and inlets cleaned after stage construction is complete. Cost shall be included in the cost of "TRAFFIC CONTROL AND PROTECTION".



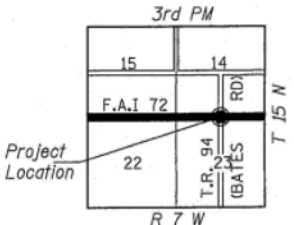
BITUMINOUS CONCRETE REMOVAL
BITUMINOUS CONCRETE SURFACE
WATERPROOF MEMBRANE SYSTEM



ELEVATION



PLAN



LOCATION SKETCH

GENERAL PLAN & ELEVATION
T.R. 94 (BATES RD) OVER F.A.I. 72
DISTRICT 6 RESURFACING 2001 & 31-7
SANGAMON COUNTY
STATION 260+28.21
STR. NO. 084-0144

FOR INFORMATION ONLY

EXISTING PLANS
STRUCTURE NO. 084-0144

SHEET NO. 8 OF 13 SHEETS

STATE OF ILLINOIS
DEPARTMENT OF TRANSPORTATION

USER NAME =	DESIGNED - CEH	REVISED
FILE NAME =	CHECKED - CWC	REVISED
PLOT SCALE =	DRAWN - DLH	REVISED
PLOT DATE =	CHECKED - CEH/CWC	REVISED

F.A.I. RTE.	SECTION	COUNTY	TOTAL SHEETS	SHEET NO.
72	6	SANGAMON	163	112
CONTRACT NO. 72B54				

ILLINOIS FED. AID PROJECT
(84-9-28)RS-2&MISC STRUC REP