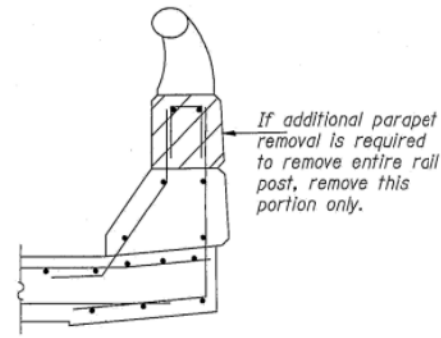
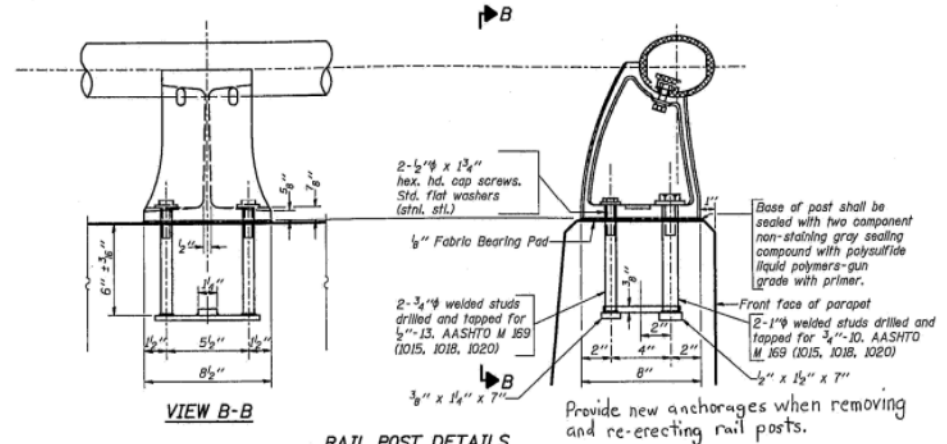


SECTION AT CURB

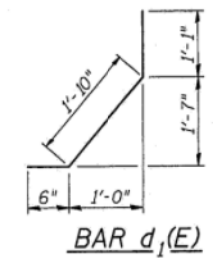


SECTION AT RAIL POST

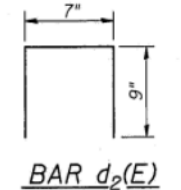


RAIL POST DETAILS

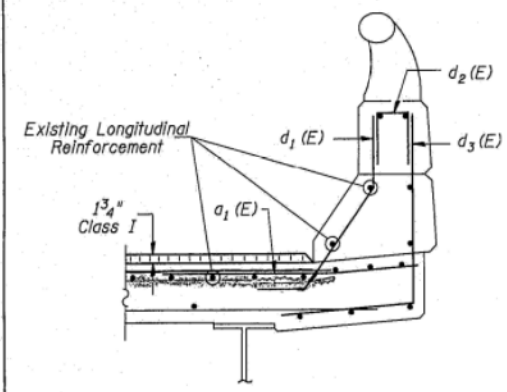
Cost of removing and reinstalling rail posts included with Concrete Removal.



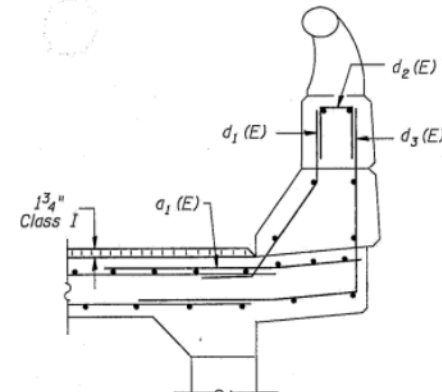
BAR d₁(E)



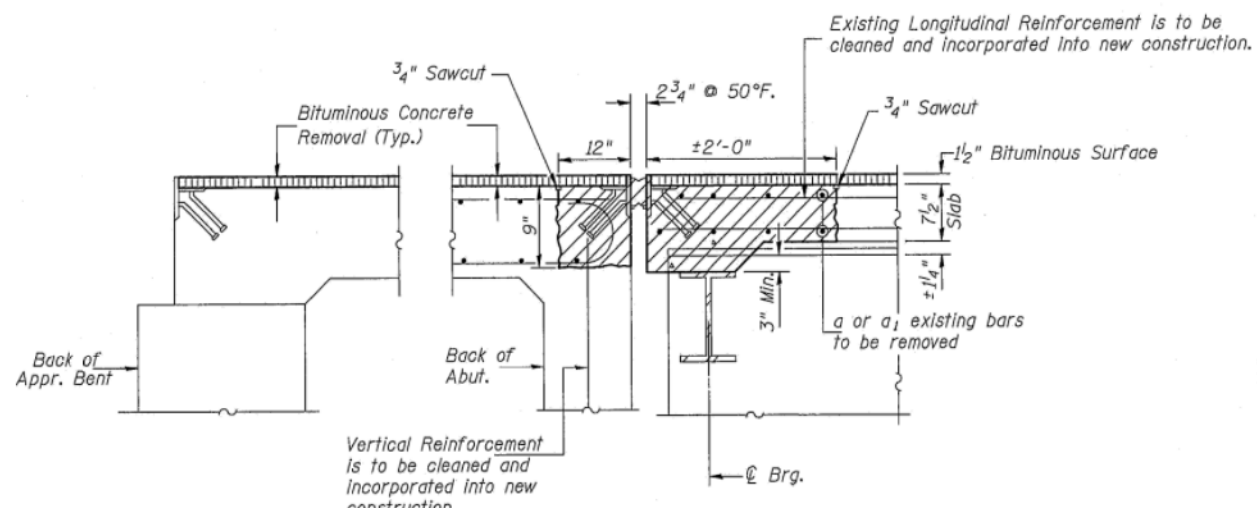
BAR d₂(E)



CURB SECTION AT MAIN SPAN

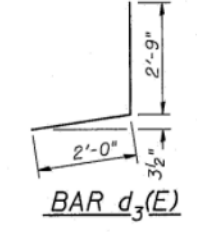


CURB SECTION AT VAULTED SPAN

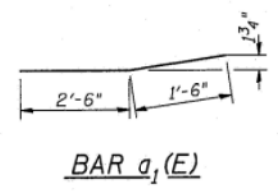


SECTION A-A SHOWING REMOVAL

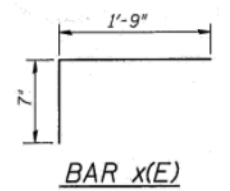
Hatched area indicates Concrete and Exp. Joint Removal. The cost of removing the existing steel in the expansion joints shall be included with Concrete Removal.



BAR d₃(E)



BAR a₁(E)

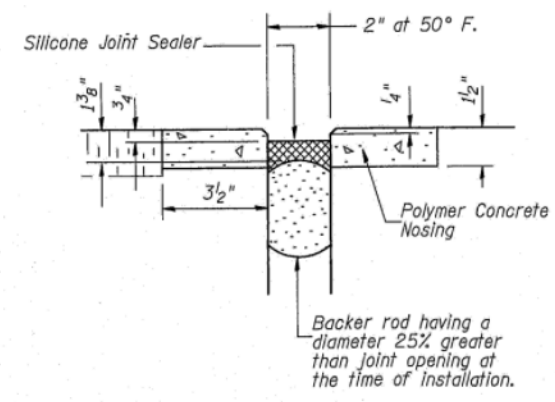


BAR x(E)

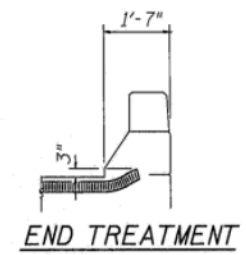
BILL OF MATERIAL (2 JOINTS)

BAR	NO.	SIZE	LENGTH	SHAPE
a(E)	40	#6	13'-9"	—
a ₁ (E)	12	#6	4'-0"	┌
d ₁ (E)	16	#5	3'-5"	┌
d ₂ (E)	8	#4	2'-1"	┌
d ₃ (E)	16	#4	4'-9"	┌
x(E)	58	#5	2'-4"	┌
Concrete Superstructure			Cu. Yd.	5.4
Reinforcement Bars (Epoxy Coated)			Lbs.	1,150
Silicone Joint Sealer			Ft.	55
Polymer Concrete			Cu. Ft.	3.9

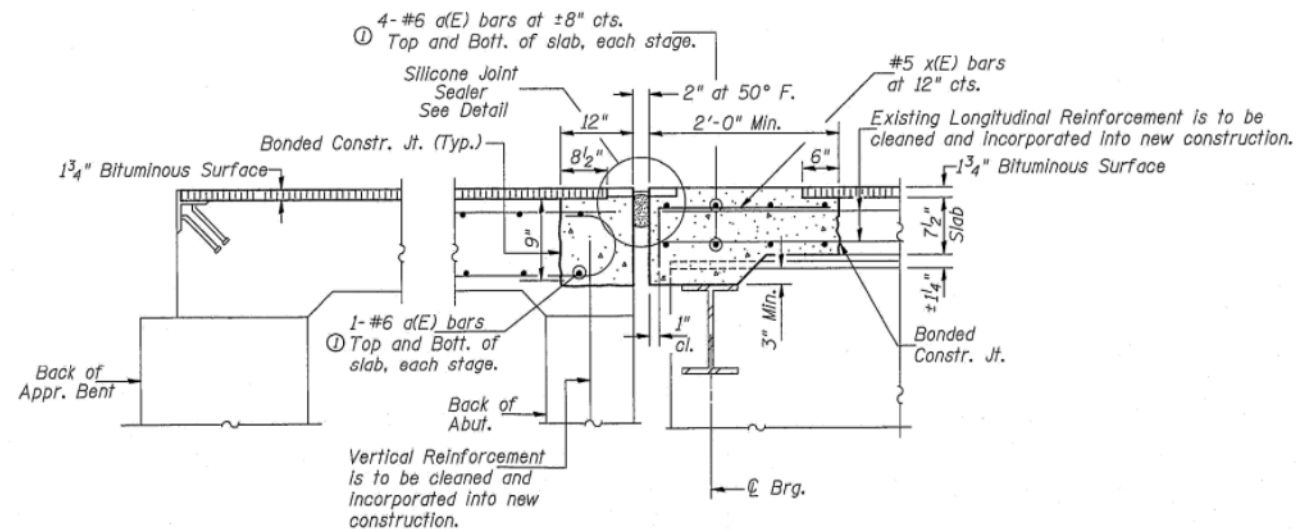
Reinforcement bars designated (E) shall be Epoxy Coated



SILICONE JOINT SEALER DETAIL



END TREATMENT



PROPOSED SECTION A-A

See Sh.#3 of 4 for Stage Construction

FOR INFORMATION ONLY

DETAILS
T.R. 94 (BATES RD) OVER F.A.I. 72
DISTRICT 6 RESURFACING 2001 & 31-7
SANGAMON COUNTY
STATION 260+28.21
STR. NO. 084-0144