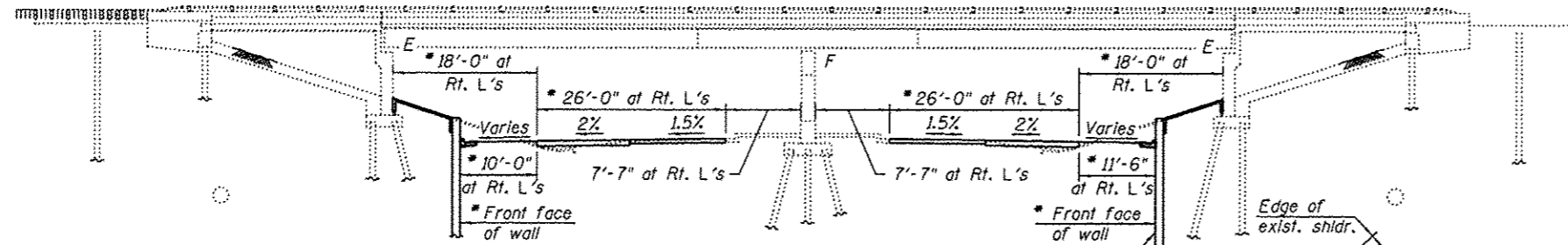


Existing Structure: The existing structures were constructed in 1974 as FA 408, Section 84-9-2HB-5. In 1992, the expansion joints were replaced on SN 084-0148. In 1998, the existing wearing surfaces on both structures were replaced with a microsilica overlay and the expansion joints were replaced on SN 084-0149. In 2004, both structures were repainted. Each structure is a two span, composite (positive moment regions only), continuous steel welded plate girder bridge consisting of a reinforced concrete deck supported on six 42" plate girders with vaulted abutments and a multicolumn pier. The approach bents, vaulted abutments, and pier are supported on concrete piles. The span lengths for each structure are 36'-6", 79'-6", 79'-6", and 36'-6" respectively. The existing structures are skewed 47°12'30" right forward. Each existing structure measures 232'-0" back to back approach bents and 42'-0" out to out bridge deck. One lane of traffic in each direction shall be maintained utilizing stage construction to perform deck patching.

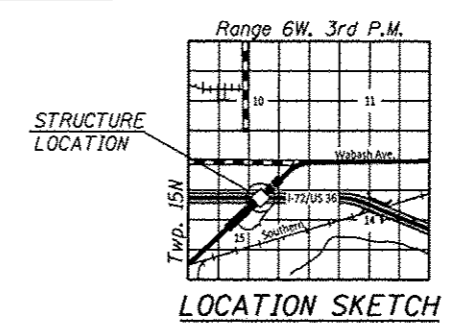
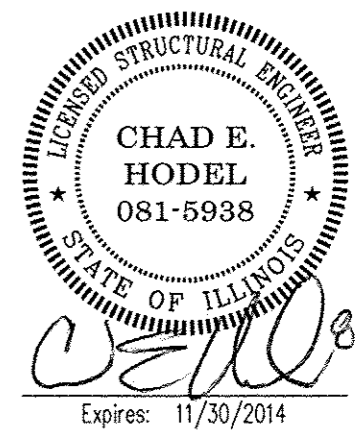
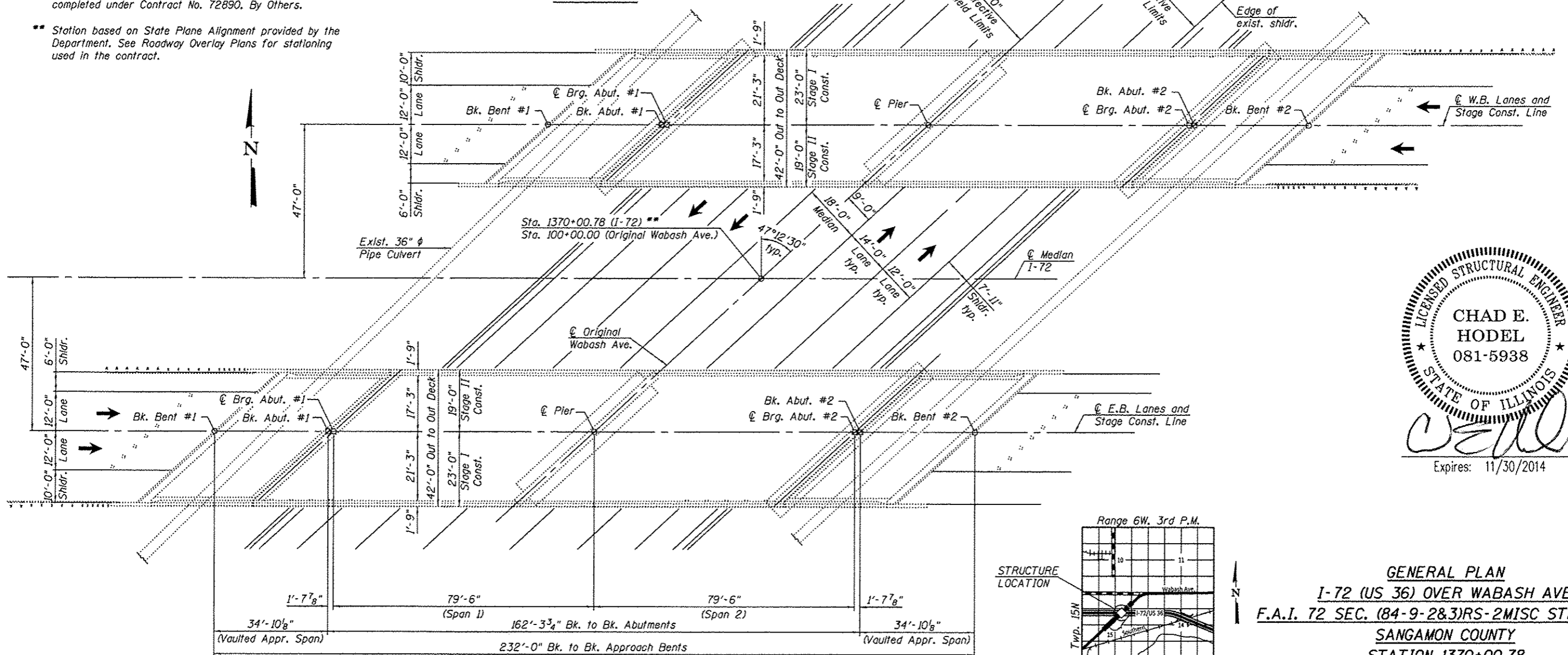
INDEX OF SHEETS

1. General Plan and Elevation
2. General Data
3. Temporary Concrete Barrier for Stage Construction
4. Deck Repair Details
- 5.-6. Existing Plans (For Information Only)



* Designates Proposed Wabash Ave. Improvements completed under Contract No. 72890, By Others.

** Station based on State Plane Alignment provided by the Department. See Roadway Overlay Plans for stationing used in the contract.



GENERAL PLAN
I-72 (US 36) OVER WABASH AVE.
F.A.I. 72 SEC. (84-9-2&3)RS-2MISC STRUC REP
SANGAMON COUNTY
STATION 1370+00.78
STRUCTURE NO. 084-0148 (W.B.) & 0149 (E.B.)

<p>design firm no. 184001036</p> <p>engineers • planners • land surveyors</p>	USER NAME • dhaberling FILE NAME • 0840148-0149-72854 (D:\cib\0840148-0149-72854.dwg)	DESIGNED - CEH REVISIONS REVISIONS REVISIONS REVISIONS	STATE OF ILLINOIS DEPARTMENT OF TRANSPORTATION	GENERAL PLAN AND ELEVATION STRUCTURE NO. 084-0148(W.B.) & 0149(E.B.) SHEET NO. 1 OF 6 SHEETS	F.A.I. RTE. 72 SECTION * COUNTY SANGAMON TOTAL SHEETS 163 SHEET NO. 121 CONTRACT NO. 72854 ILLINOIS FED. AID PROJECT (84-9-2&3)RS-2MISC STRUC REP
	PLOT SCALE • 1/8" = 1'-0" PLOT DATE • 6/21/2014	DRAWN - DLH CHECKED - CEH			