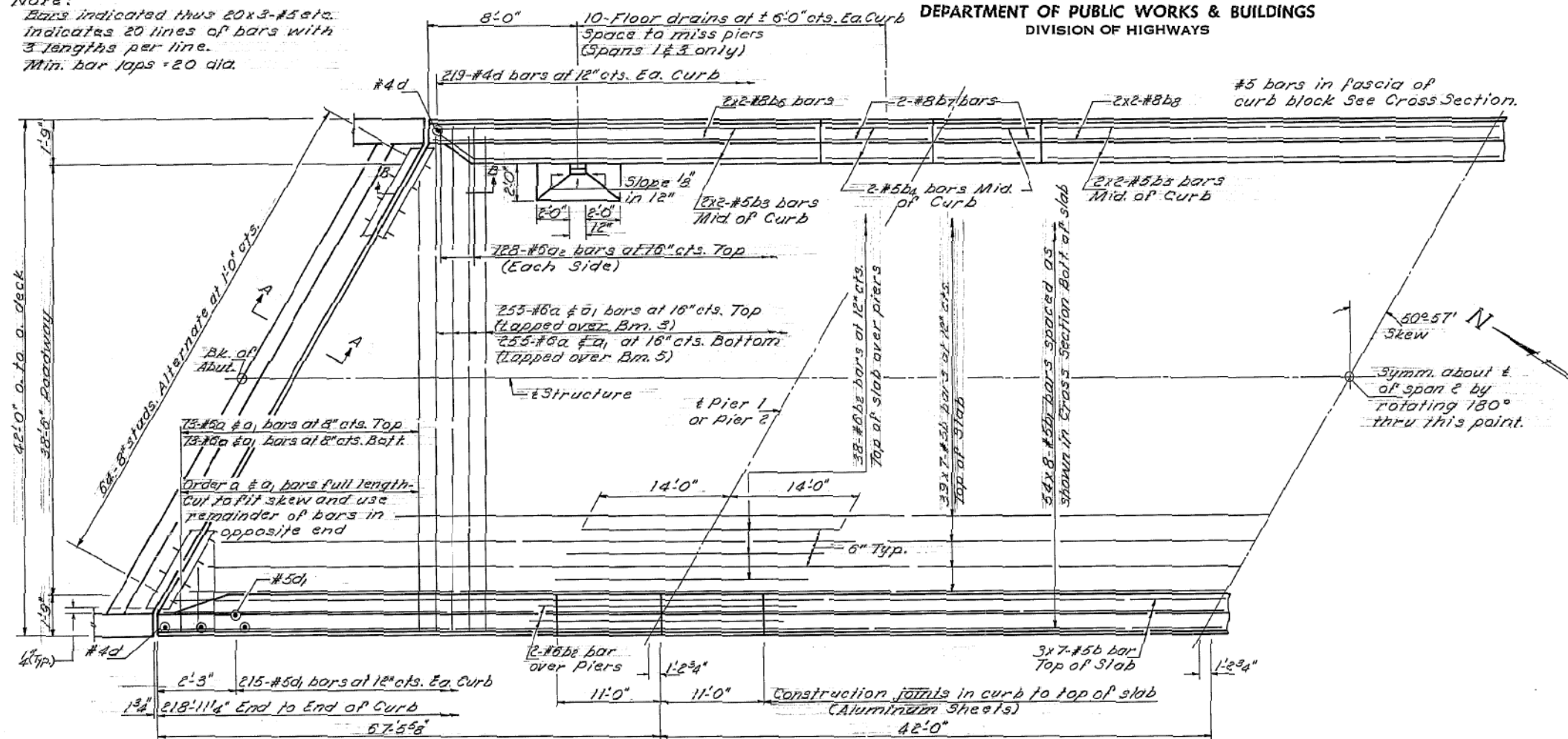
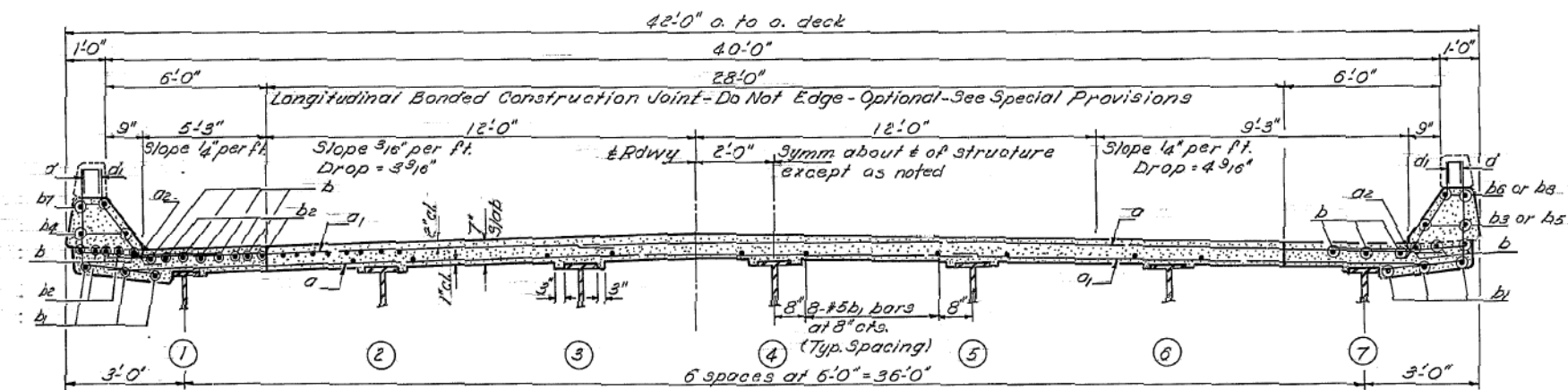


Note:  
Bars indicated thus 20x3-#5 etc.  
Indicates 20 lines of bars with  
3 lengths per line.  
Min. bar laps = 20 dia.



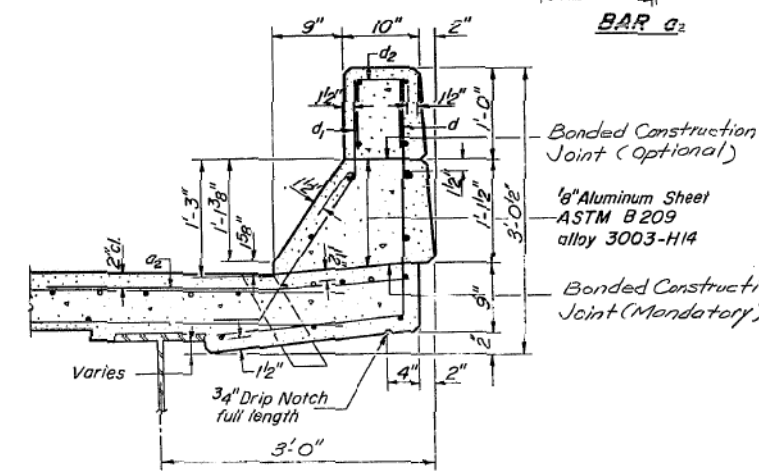
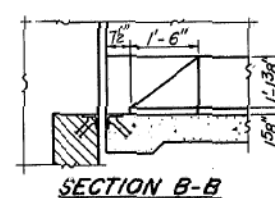
HALF PLAN



CROSS SECTION

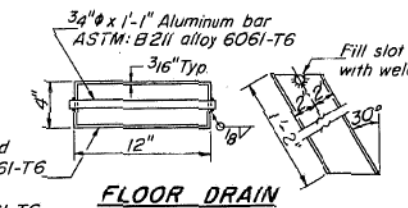
North Bridge Looking West  
South Bridge Looking East

DESIGNED	S. Lin	EXAMINED	19
CHECKED	John W. Clark	PASSED	BUSINESS OF BRIDGE AND TRAFFIC STRUCTURES
DRAWN	J. Kessler	APPROVED	ENGINEER OF DESIGN
CHECKED	John W. Clark		CHIEF HIGHWAY ENGINEER

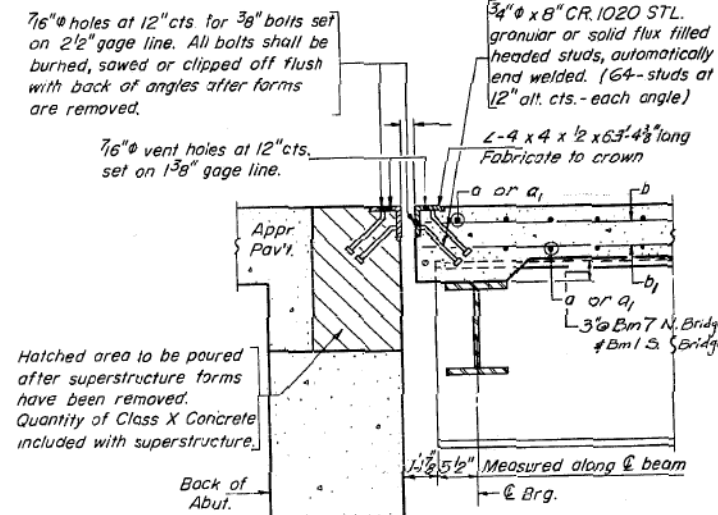


CURB SECTION

Cost of Aluminum Drains and Sheets shall be incidental to Class X Concrete



FLOOR DRAIN



SECTION A-A

TWO BRIDGES  
BILL OF MATERIAL

Bar	No.	Size	Length	Shape
a	1312	#5	27'-9"	
a1	1312	#6	16'-0"	
a2	512	#6	4'-0"	
b	630	#5	32'-2"	
b1	864	#5	28'-4"	
b2	168	#6	28'-0"	
b3	32	#5	28'-8"	
b4	32	#5	10'-9"	
b5	16	#5	31'-5"	
b6	32	#8	29'-1"	
b7	32	#8	10'-9"	
b8	16	#8	31'-11"	
d	876	#4	4'-7"	
d1	860	#5	3'-5"	
Reinforcement Bars		Lbs.	155380	
Structural Steel		Lbs.	540820	
Class X Concrete		Cu. Yds.	539.1	

\* Weight of bearing assemblies with shim plates, lead plates, and anchor bolts are included as structural steel. Est. Wt. = 17,220 Lbs.

The lengths and quantities of reinforcement bars and Class X Concrete in parapets are not included in the above quantities. See sheet #7

FOR INFORMATION ONLY

SUPERSTRUCTURE  
NORTH & SOUTH BRIDGES  
F.A. RT 196 SEC. IVB  
SANGAMON COUNTY  
STATION 424+68.85