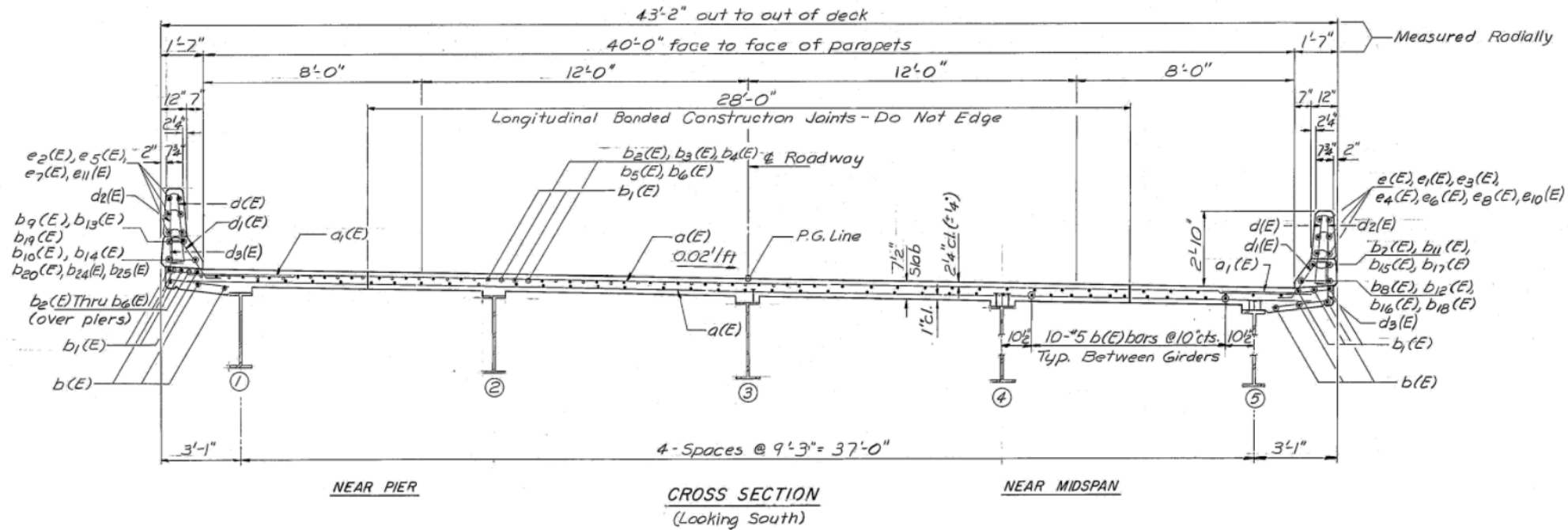
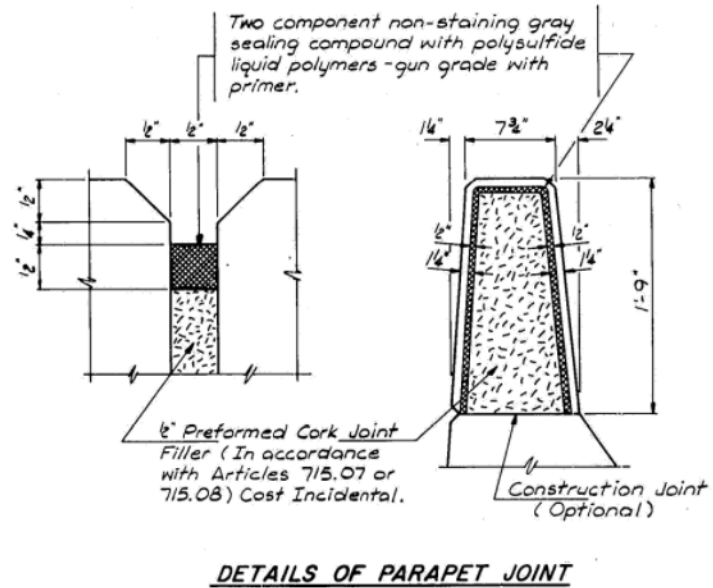
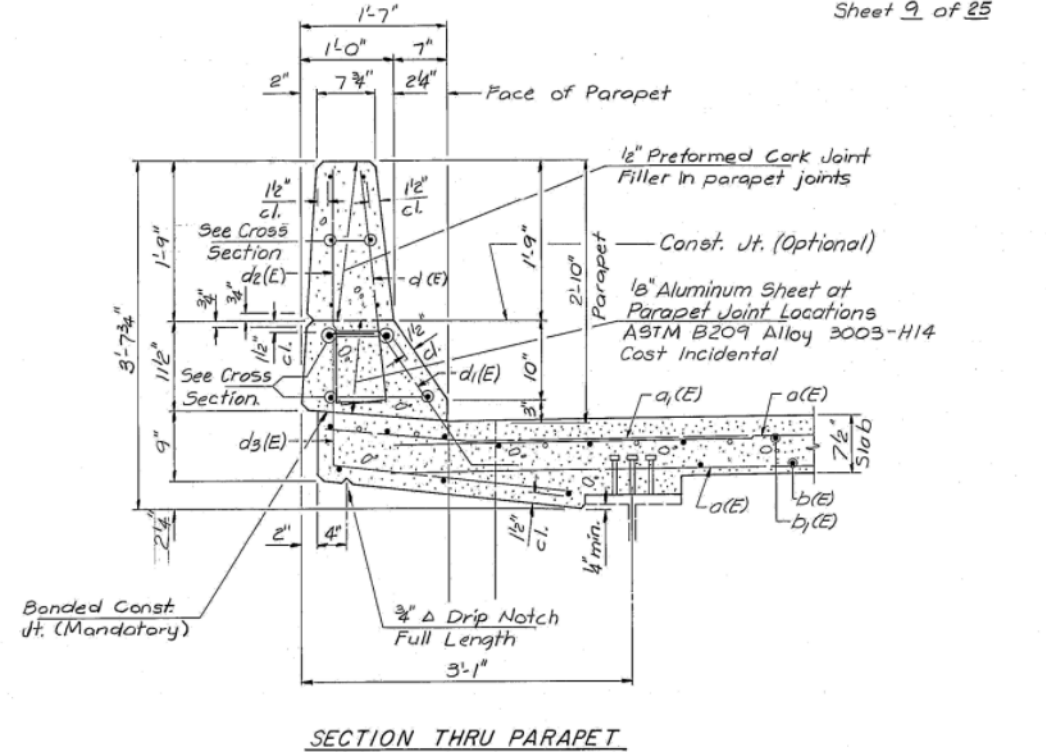


NOTE: Fiberglass pipe shall conform to ASTM: D2996, with short-time rupture strength hoop tensile stress of 90,000 p.s.i. minimum.

The exterior surfaces of the Floor Drain shall be painted with the Vinyl Enamel Coat painting specified for Structural Steel. The exterior surfaces of the Aluminum tube shall be cleaned and given a washcoat pretreatment in accordance with Steel Structural Painting Council's Spec. SSPC-SP1 & SSPC-Paint 27 prior to painting.

The surface of the fiberglass pipe shall be free of bond inhibiting agents.



DESIGNER	CEH	REVISOR	
CHECKED	CWC	REVISION	
DRAWN	DLH	REVISION	
CHECKED	CEH/CWC	REVISION	

STATE OF ILLINOIS  
 DEPARTMENT OF TRANSPORTATION

**FOR INFORMATION ONLY**

EXISTING PLANS	STRUCTURE NO. 084-0185
SHEET NO. 11 OF 15 SHEETS	

STRUCTURE NUMBER: 084-0185

SUPERSTRUCTURE DETAILS  
 CHATHAM ROAD over  
 C.M.W. and N.&W. Railroads and FAP RTE 40B  
 USABLE SEGMENT NO. 3, VB-1  
 SANGAMON COUNTY  
 STATION 161+52.56

DESIGNED T.E.H.  
 CHECKED C.D.P.  
 DRAWN M.J.M.  
 CHECKED T.E.H.

FILE NO. 8553092  
 DATE 12-14-89  
 SPRINGFIELD, PEORIA & ROCKFORD, ILLINOIS

F.A.I. RTE.	SECTION	COUNTY	TOTAL SHEETS	SHEET NO.
72		SANGAMON	163	148
CONTRACT NO. 72B54				

ILLINOIS FED. AID PROJECT  
 84-9-2&31R3-2&MISC STRUC REP