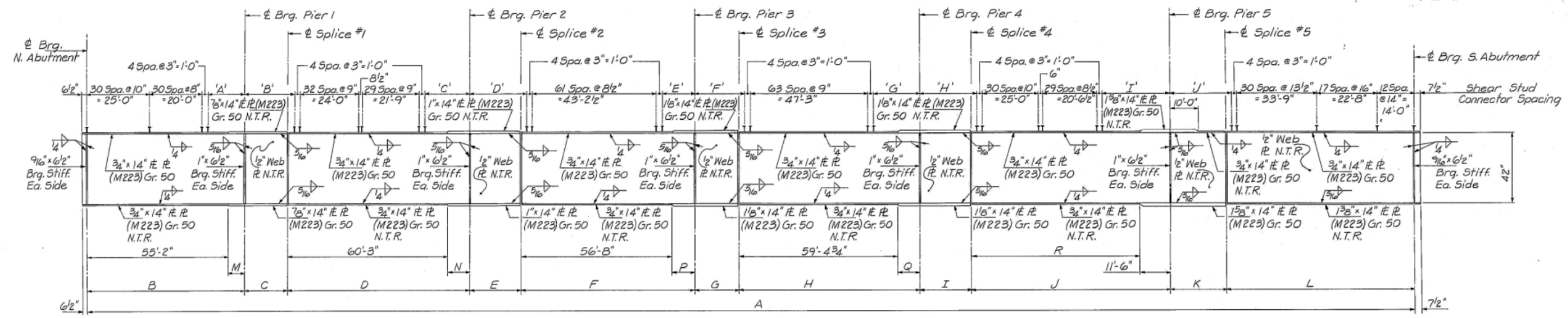


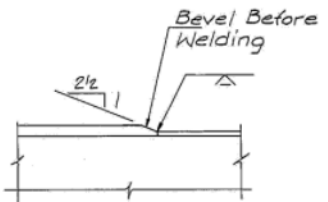
Usable Segment No. 3, VB-1

Sheet 15 of 25



Note: N.T.R. refers to the supplemental requirements for notch toughness.

GIRDER ELEVATION



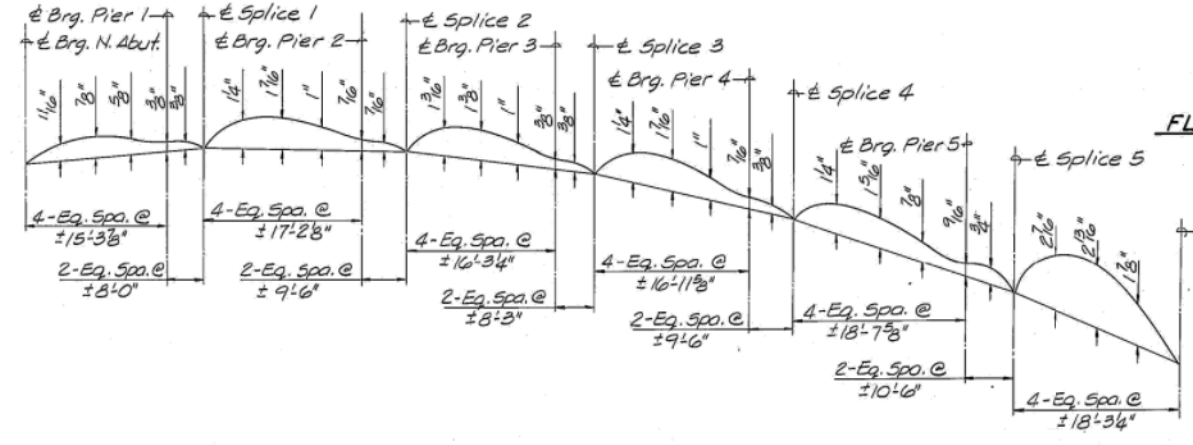
FLANGE SPlice DETAIL

GIRDER DIMENSIONS

	Girder 1	Girder 2	Girder 3	Girder 4	Girder 5
a	20'-2 3/8"	20'-2 3/8"	20'-2 1/8"	20'-2 1/8"	
b	20'-2 3/8"	20'-2 1/8"	20'-2 1/8"	20'-2 1/8"	
c	20'-10"	20'-10"	20'-10"	20'-10"	
d	1'-0 1/4"	1'-0 5/8"	1'-0 5/8"	1'-0 5/8"	
e	14'-11 3/8"	14'-11 3/8"	14'-11 3/8"	14'-11 3/8"	
f	1'-0 1/8"	1'-0 3/8"	1'-0 3/8"	1'-0 3/8"	
g	25'-3 3/8"	25'-3 3/8"	25'-3 3/8"	25'-3 3/8"	
h	21'-2 3/8"	21'-2 3/8"	21'-2 3/8"	21'-2 3/8"	
i	21'-2 3/8"	21'-2 3/8"	21'-2 3/8"	21'-2 3/8"	
j	1'-1 1/8"	1'-1 1/8"	1'-1 1/8"	1'-1 1/8"	
k	17'-11"	17'-11"	17'-11"	17'-11"	
m	1'-1 3/8"	1'-1 3/8"	1'-1 3/8"	1'-1 3/8"	
n	21'-11 3/8"	21'-11 3/8"	21'-11 3/8"	21'-11 3/8"	
p	21'-0 3/8"	21'-0 3/8"	21'-0 3/8"	21'-0 3/8"	
q	21'-0 3/8"	21'-0 3/8"	21'-0 3/8"	21'-0 3/8"	
r	1'-1 3/8"	1'-1 3/8"	1'-1 3/8"	1'-1 3/8"	
s	15'-4 1/4"	15'-4 1/4"	15'-4 1/4"	15'-4 1/4"	
t	1'-1 1/8"	1'-1 1/8"	1'-2"	1'-2"	
u	21'-11 3/8"	21'-11 3/8"	21'-11 3/8"	21'-11 3/8"	
v	22'-9 1/4"	22'-9 1/4"	22'-9 1/4"	22'-9 1/4"	
w	21'-11 3/8"	21'-11 3/8"	21'-11 3/8"	21'-11 3/8"	
x	1'-2 1/8"	1'-2 1/8"	1'-2 3/8"	1'-2 3/8"	
y	17'-9 1/2"	17'-9 1/2"	17'-9 1/2"	17'-9 1/2"	
z	1'-2 3/8"	1'-2 3/8"	1'-2 3/8"	1'-2 3/8"	
aa	17'-2"	17'-2"	17'-2"	17'-2"	
bb	18'-8 3/8"	18'-8 1/8"	18'-8 1/8"	18'-8 1/8"	
cc	18'-8 3/8"	18'-8 3/8"	18'-8 3/8"	18'-8 3/8"	
dd	18'-8 3/8"	18'-8 3/8"	18'-8 3/8"	18'-8 3/8"	
ee	1'-3 3/8"	1'-3 3/8"	1'-3 3/8"	1'-3 3/8"	
ff	19'-8 1/4"	19'-8 1/4"	19'-8 1/4"	19'-8 1/4"	
gg	1'-3 1/8"	1'-3 3/8"	1'-3 3/8"	1'-3 1/8"	
hh	17'-2 1/8"	17'-2 1/8"	17'-2 1/8"	17'-2 1/8"	
ii	17'-10 1/2"	17'-10 1/2"	17'-10 1/2"	17'-10 1/2"	
jj	17'-10 1/2"	17'-10 1/2"	17'-10 1/2"	17'-10 1/2"	
kk	18'-9 3/4"	18'-9 3/4"	18'-9 1/4"	18'-9 1/4"	

GIRDER DIMENSIONS

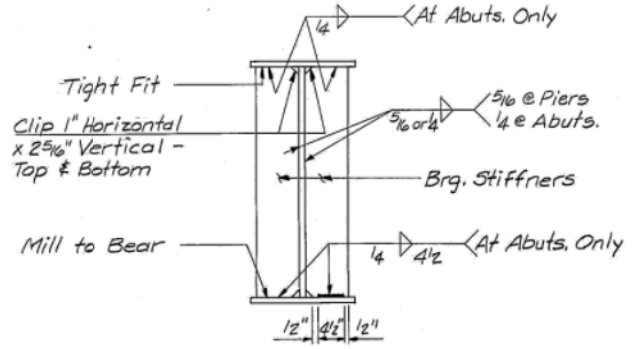
	Girder 1	Girder 2	Girder 3	Girder 4	Girder 5
b'		18'-2 1/8"	18'-2 1/8"	18'-2 1/8"	18'-2 3/8"
b''		20'-2 3/8"	20'-2 3/8"	20'-2 3/8"	20'-2 3/8"
c'		21'-9 1/8"	21'-9 1/8"	21'-9 1/8"	21'-10"
d'		1'-0 5/8"	1'-0 5/8"	1'-0 5/8"	1'-0 5/8"
e'		14'-11 3/8"	14'-11 3/8"	14'-11 3/8"	14'-11 3/8"
f'		1'-0 1/8"	1'-0 1/8"	1'-0 1/8"	1'-0 1/8"
g'		24'-3"	24'-3"	24'-3"	24'-3"
h'		21'-1 1/8"	21'-1 1/8"	21'-1 1/8"	21'-1 1/8"
i'		22'-2 3/8"	22'-2 3/8"	22'-2 3/8"	22'-2 3/8"
j'		1'-1"	1'-1"	1'-1 1/8"	1'-1 1/8"
k'		17'-10 3/8"	17'-10 3/8"	17'-10 3/8"	17'-10 3/8"
m'		1'-1 3/8"	1'-1 3/8"	1'-1 3/8"	1'-1 3/8"
n'		20'-9 1/8"	20'-9 1/8"	20'-9 1/8"	20'-9 1/8"
p'		20'-11 3/8"	20'-11 3/8"	20'-11 3/8"	20'-11 3/8"
q'		22'-1 3/8"	22'-1 3/8"	22'-1 1/8"	22'-1 1/8"
r'		1'-1 3/8"	1'-1 3/8"	1'-1 3/8"	1'-1 3/8"
s'		15'-4 3/8"	15'-4 3/8"	15'-4 3/8"	15'-4 3/8"
t'		1'-1 1/8"	1'-1 1/8"	1'-1 1/8"	1'-2"
u'		20'-9 3/8"	20'-9 3/8"	20'-9 3/8"	20'-9 3/8"
v'		22'-8 3/8"	22'-8 3/8"	22'-8 3/8"	22'-8 3/8"
w'		23'-1 1/4"	23'-1 1/4"	23'-1 1/4"	23'-1 1/4"
x'		1'-2 1/8"	1'-2 1/8"	1'-2 1/8"	1'-2 3/8"
y'		17'-9 3/8"	17'-9 3/8"	17'-9 3/8"	17'-9 3/8"
z'		1'-2 1/8"	1'-2 3/8"	1'-2 3/8"	1'-2 3/8"
oo'		15'-11"	15'-10 1/8"	15'-10 1/8"	15'-10 3/8"
bb'		18'-8 1/8"	18'-8 1/8"	18'-8 3/8"	18'-8 3/8"
cc'		18'-8 1/8"	18'-8 1/8"	18'-8 3/8"	18'-8 3/8"
dd'		19'-11 1/8"	19'-11 1/8"	19'-11 1/8"	19'-11 3/8"
ee'		1'-3 3/8"	1'-3 1/8"	1'-3 1/8"	1'-3 3/8"
ff'		19'-8 3/8"	19'-8 3/8"	19'-8 3/8"	19'-8 3/8"
gg'		1'-3 3/8"	1'-3 3/8"	1'-3 3/8"	1'-3 1/8"
hh'		15'-10 1/8"	15'-10 1/8"	15'-10 1/8"	15'-10 3/8"
ii'		17'-10 3/8"	17'-10 3/8"	17'-10 3/8"	17'-10 3/8"
jj'		17'-10 3/8"	17'-10 3/8"	17'-10 3/8"	17'-10 3/8"
kk'		21'-5 3/8"	21'-6"	21'-6 3/8"	21'-6 3/8"



CAMBER DIAGRAM

TOP OF WEB ELEVATIONS

	Girder 1	Girder 2	Girder 3	Girder 4	Girder 5
± Brg. N. Abut.	630.769	630.597	630.425	630.254	630.082
± Brg. Pier 1	631.083	630.905	630.726	630.547	630.368
± Splice 1	631.128	630.948	630.768	630.587	630.406
± Brg. Pier 2	631.153	630.958	630.768	630.579	630.389
± Splice 2	631.102	630.910	630.718	630.526	630.334
± Brg. Pier 3	630.783	630.583	630.381	630.180	629.978
± Splice 3	630.662	630.459	630.255	630.051	629.846
± Brg. Pier 4	629.992	629.778	629.564	629.349	629.133
± Splice 4	629.755	629.538	629.320	629.102	628.883
± Brg. Pier 5	628.615	628.385	628.154	627.923	627.691
± Splice 5	628.233	627.999	627.765	627.530	627.294
± Brg. S. Abut.	626.699	626.451	626.202	625.953	625.703



BEARING STIFFENER DETAILS

FOR INFORMATION ONLY

GIRDER DIMENSIONS

Girder	Radius	A	B	C	D	E	F	G	H	I	J	K	L	M	N	P	Q	R	'A'	'B'	'C'	'D'	'E'	'F'	'G'	'H'	'I'	'J'
1	6566.59	501'-11 1/4"	61'-3 3/4"	16'-0"	68'-8 3/8"	19'-0 1/8"	65'-0 1/8"	16'-6"	67'-9 1/8"	19'-0 1/8"	74'-5 3/8"	21'-0 1/8"	73'-0 3/8"	6'-1 1/4"	8'-5 1/8"	8'-4 1/8"	8'-5 3/8"	62'-11 1/8"	15'-3 3/4"	17'-3 3/8"	18'-11 1/8"	21'-1"	17'-9 5/8"	17'-9 1/2"	17'-3 3/8"	20'-3 3/8"	25'-1 7/8"	22'-7 3/8"
2	6557.34	501'-11 1/8"	61'-3 3/8"	16'-0 1/8"	68'-8 3/8"	19'-0 1/8"	65'-0 3/8"	16'-6 1/8"	67'-10"	19'-0 1/8"	74'-5 3/8"	21'-0 1/8"	73'-0 3/8"	6'-1 3/8"	8'-5 3/8"	8'-4 3/8"	8'-5 3/8"	62'-11 1/8"	15'-3 3/8"	17'-3 3/8"	18'-11 1/8"	21'-1"	17'-9 5/8"	17'-9 1/8"	17'-3 3/8"	20'-3 3/8"	25'-1 1/8"	22'-7 3/8"
3	6548.09	502'-0 5/8"	61'-3 3/8"	16'-0 1/8"	68'-8 3/8"	19'-0 1/8"	65'-0 3/8"	16'-6 1/8"	67'-10 1/8"	19'-0 1/8"	74'-6 1/8"	21'-0 1/8"	73'-0 3/8"	6'-1 3/8"	8'-5 3/8"	8'-4 3/8"	8'-5 3/8"	63'-0 1/8"	15'-3 3/8"	17'-3 3/8"	18'-11 1/8"	21'-1"	17'-9 5/8"	17'-9 1/8"	17'-3 3/8"	20'-3 3/8"	25'-2 1/8"	22'-8 1/8"
4	6538.84	502'-0 3/8"	61'-3 3/8"	16'-0 1/8"	68'-8 3/8"	19'-0 1/8"	65'-0 3/8"	16'-6 1/8"	67'-10 1/8"	19'-0 1/8"	74'-6 1/8"	21'-0 1/8"	73'-1 1/8"	6'-1 3/8"	8'-5 3/8"	8'-4 3/8"	8'-5 3/8"	63'-0 1/8"	15'-3 3/8"	17'-3 3/8"	18'-11 1/8"	21'-1 1/8"	17'-9 1/2"	17'-9 1/8"	17'-3 3/8"	20'-3 3/8"	25'-2 3/8"	22'-8 3/8"
5	6529.59	502'-1 1/8"	61'-3 3/8"	16'-0 1/8"	68'-8 3/8"	19'-0 1/8"	65'-0 3/8"	16'-6 1/8"	67'-10 1/8"	19'-0 1/8"	74'-6 1/8"	21'-0 1/8"	73'-1 1/8"	6'-1 1/8"	8'-5 3/8"	8'-4 3/8"	8'-5 3/8"	63'-0 1/8"	15'-3 3/8"	17'-3 3/8"	18'-11 1/8"	21'-1 1/8"	17'-9 1/8"	17'-9 1/8"	17'-3 3/8"	20'-3 3/8"	25'-2 1/4"	22'-8 3/8"

STRUCTURE NUMBER: 084-0185
GIRDER ELEVATION
 CHATHAM ROAD over
 C.M.W. and N.&W. Railroads and FAP RTE 40B
 USABLE SEGMENT NO. 3, VB-1
 SANGAMON COUNTY
 STATION 161+52.56

DESIGNED BY: TEH
 CHECKED BY: MDM
 DRAWN BY: DAB
 CHECKED BY: TEH

HANSON ENGINEERS
 INCORPORATED
 SPRINGFIELD, PEORIA & ROCKFORD, ILLINOIS

FILE NO.: B553092
 DATE: 12-14-89



USER NAME =	DESIGNED - CEH	REVISED
FILE NAME =	CHECKED - CWC	REVISED
PLOT SCALE =	DRAWN - DLH	REVISED
PLOT DATE =	CHECKED - CEH/CWC	REVISED

STATE OF ILLINOIS
 DEPARTMENT OF TRANSPORTATION

EXISTING PLANS
 STRUCTURE NO. 084-0185
 SHEET NO. 14 OF 15 SHEETS

F.A.I. RTE.	SECTION	COUNTY	TOTAL SHEETS	SHEET NO.
72		SANGAMON	163	151
ILLINOIS FED. AID PROJECT			CONTRACT NO. 72B54	