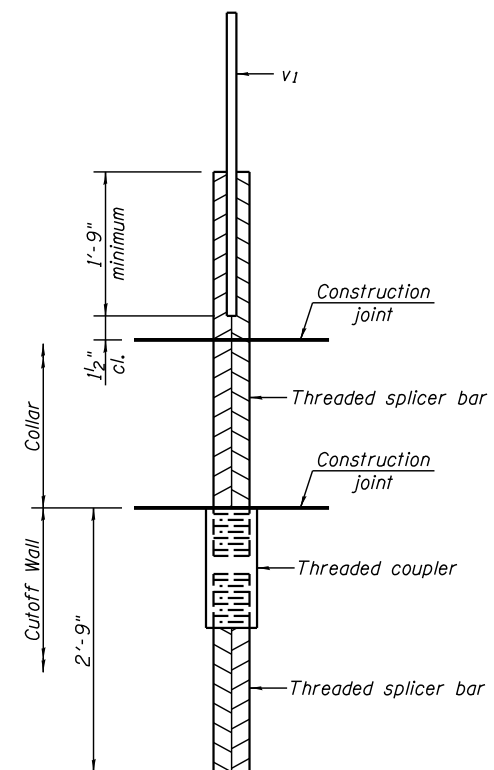


**INSTALLATION AND SETTING METHODS**


"A" : Set bar splicer assembly by means of a template bolt.  
 "B" : Set bar splicer assembly by nailing to wood forms or cementing to steel forms.



**FOR BOX CULVERT END SECTIONS**

**NOTES**

Splicer bars shall be deformed with threaded ends and have a minimum 60 ksi yield strength.  
 All reinforcement shall be lapped and tied to the splicer bars.  
 See approved list of bar splicer assemblies and mechanical splicers for alternatives.

FILE NAME =	USER NAME =	DESIGNED -	REVISD -	 <b>Allen Henderson &amp; Associates, Inc.</b> Civil and Structural Engineers Springfield, IL. 62703 Phone: (217)544-8033 IL Design Firm No. 184-001907	<b>BAR SPLICER ASSEMBLY AND MECHANICAL SPLICER DETAILS</b> <b>STRUCTURE NO. 034-2528</b> SHEET NO. 4 OF 6 SHEETS	F.A.P. RTE.	SECTION	COUNTY	TOTAL SHEETS	SHEET NO.
		CHECKED -	REVISD -			685	(115)B-2	HANCOCK	28	18
PLOT SCALE =		DRAWN -	REVISD -			<b>CONTRACT NO. 72F07</b>				
PLOT DATE =		CHECKED -	REVISD -			ILLINOIS FED. AID PROJECT				