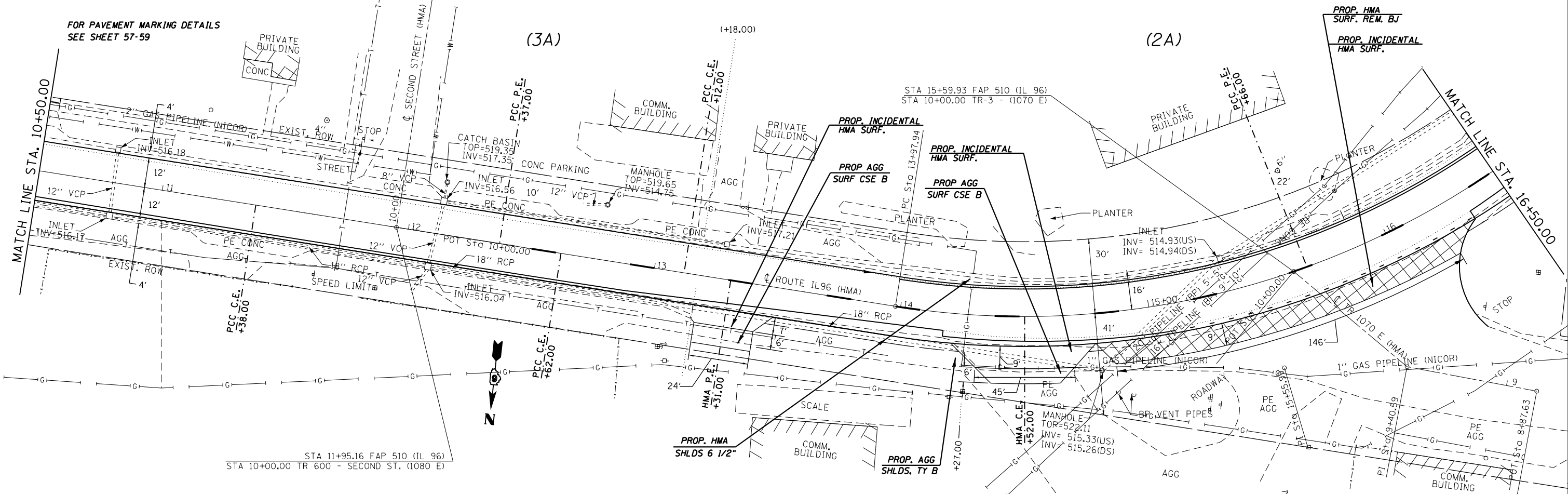


EXIST. CURVE 607
 PI STA. = 5+82.43
 $\Delta = 25^\circ 43' 00''$ (RT)
 $D = 5^\circ 59' 28''$
 $R = 956.35'$
 $T = 218.30'$
 $L = 429.25'$
 $E = 24.60'$
 $e = 3\%$
 T.R. = -----
 S.E. RUN = -----
 P.C. STA. = 3+64.13
 P.T. STA. = 7+93.38

STA 7+39.68 FAP 510 (IL 96)
 STA 10+00.00 TR 602 - THIRD ST. (1090 E)

THIRD ST. & ARBOR ST. SHALL BE PAID FOR AS
 HMA SURF. REM. BJ & INCIDENTAL HMA SURF.

TA 10+00.00 TR 601



STA 11+95.16 FAP 510 (IL 96)
 STA 10+00.00 TR 600 - SECOND ST. (1080 E)

FILE NAME =	USER NAME = sparksgw	DESIGNED - JWC	REVISED -
ei:\pw\work\p\dots\sparksgw\10296720\d672\F32-sht-pln20.dgn		DRAWN - JWC	REVISED -
Default		CHECKED - JWC	REVISED -
	PLOT DATE = Jun-06-2014 10:35:27AM	DATE -	REVISED -

STATE OF ILLINOIS
 DEPARTMENT OF TRANSPORTATION

PLAN SHEETS IL 96

SCALE: 20 SHEET 2 OF 18 SHEETS STA. 6+00.00 TO STA. 16+50.00

F.A.P. RTE.	SECTION	COUNTY	TOTAL SHEETS	SHEET NO.
	(119)RS-11,(113)RS-6	HANCOCK	95	31
CONTRACT NO. 72F32				
ILLINOIS FED. AID PROJECT				

685 & 510