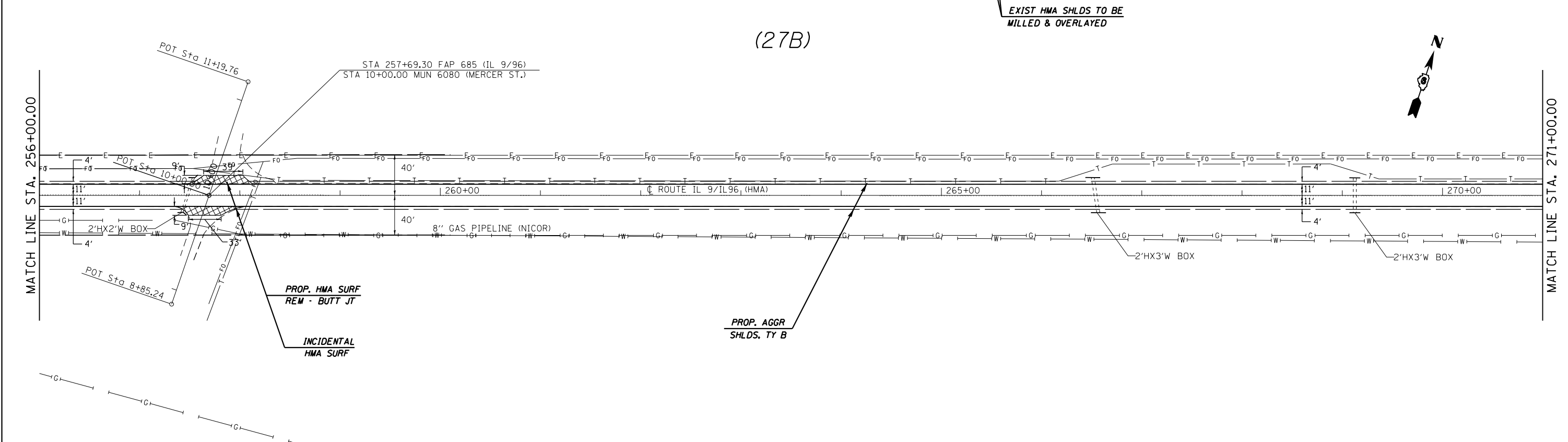
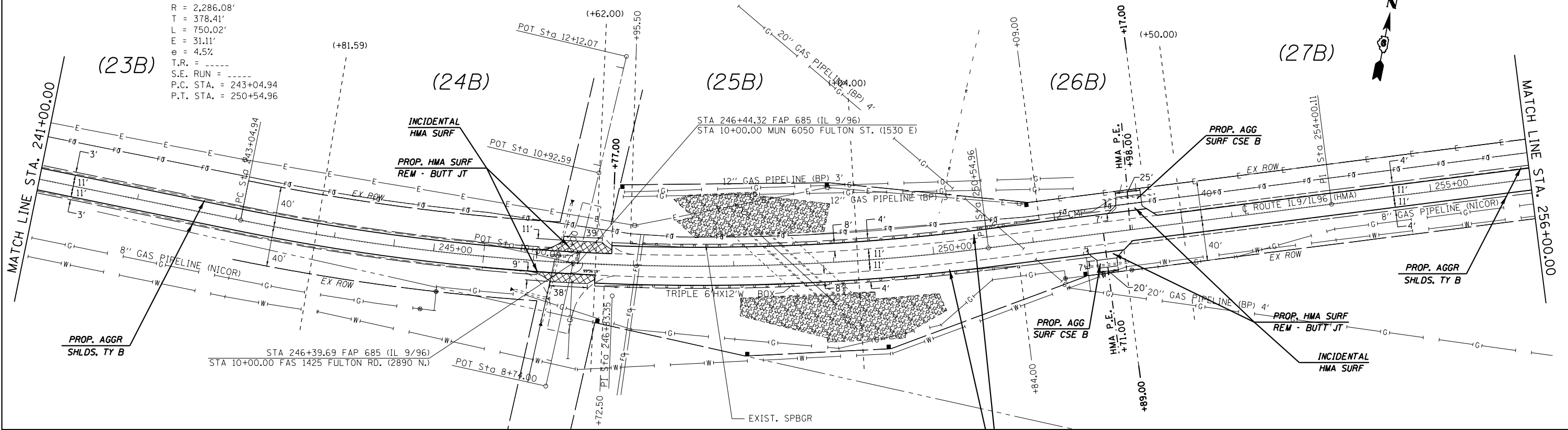


EXIST. CURVE 449  
 PI STA. = 246+83.35  
 $\Delta = 18^\circ 47' 51''$  (LT)  
 $D = 2^\circ 30' 23''$   
 $R = 2,286.08'$   
 $T = 378.41'$   
 $L = 750.02'$   
 $E = 31.11'$   
 $e = 4.5\%$   
 T.R. = -----  
 S.E. RUN = -----  
 P.C. STA. = 243+04.94  
 P.T. STA. = 250+54.96

S.N. 034-2519  
 STA. 248+59.00



FILE NAME =	USER NAME = sparksgw	DESIGNED - JWC	REVISED -
c:\pwwork\pwwork\sparksgw\10296720\0672f32-sht-plan_rural.dgn		DRAWN - JWC	REVISED -
Default	PLOT SCALE = 100.0000' / in.	CHECKED - JWC	REVISED -
	PLOT DATE = Jun-06-2014 10:35:48AM	DATE -	REVISED -

**STATE OF ILLINOIS  
 DEPARTMENT OF TRANSPORTATION**

**PLAN SHEETS - IL 91L 96**

SCALE: 50      SHEET 14 OF 18 SHEETS      STA. 241+00.00 TO STA. 271+00.00

F.A.P. RTE.	SECTION	COUNTY	TOTAL SHEETS	SHEET NO.
••	(119)RS-11,(113)RS-6	HANCOCK	95	43
			CONTRACT NO. 72F32	
ILLINOIS FED. AID PROJECT				

\*\*685 & 510