

STATE OF ILLINOIS
DEPARTMENT OF TRANSPORTATION
DIVISION OF HIGHWAYS

**PROPOSED
HIGHWAY PLANS**

FAP ROUTE 614 (IL 78)
SECTION (146)RS-4

RESURFACING (3P)
CASS COUNTY

C-96-001-13

F.A.P. RTE.	SECTION	COUNTY	TOTAL SHEETS	SHEET NO.
6684	(146)RS-4	CASS	28	1
		ILLINOIS	CONTRACT NO. 72F70	

D-96-001-13



FOR INDEX OF SHEETS, SEE SHEET NO. 1

- 1 COVER SHEET
- 2 GENERAL NOTES
- 3-4 SUMMARY OF QUANTITIES
- 5-6 SCHEDULE OF QUANTITIES
- 7-8 TYPICAL SECTIONS
- 9-23 PLAN SHEETS
- 24-28 DISTRICT DETAILS

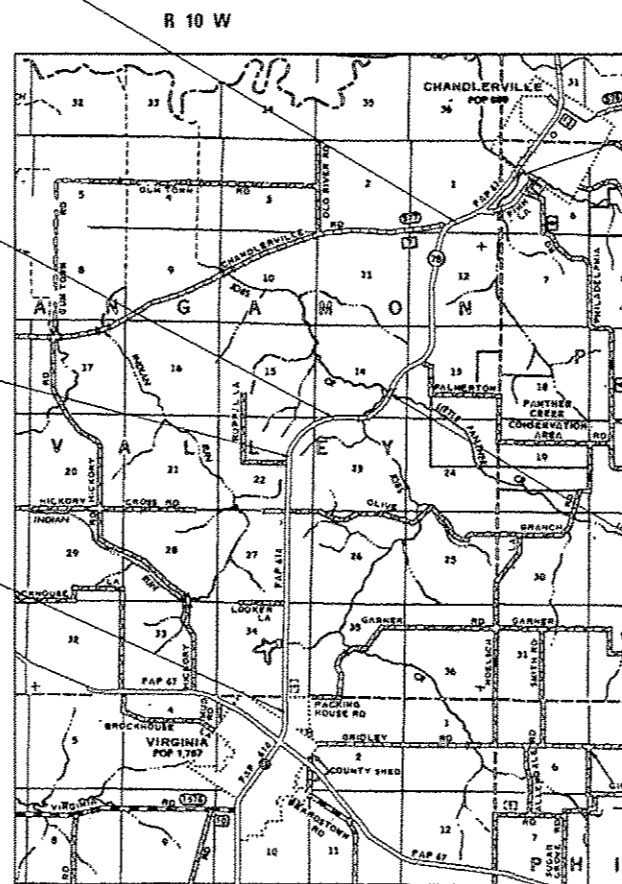
FUNCTIONAL CLASS: MINOR ARTERIAL
PROJECTED 2033: 1800
ADT (2013): 1500
PV = 88%
SU = 5.8%
MU = 6.2%

STA EQUATION:
STA 1039 + 14.56 BK =
STA 17 + 05.91 AH

STA EQUATION:
STA 187 + 34.74 BK =
STA 181 + 09.77 AH

STA EQUATION:
STA 206 + 38.90 BK =
STA 206 + 10.30 AH

END IMPROVEMENT
STA 365 + 00

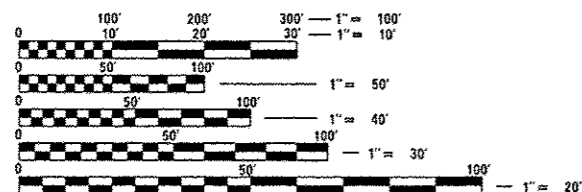


BEGIN IMPROVEMENT
STA 1003 + 50

T 18 N



BRIDGE OMISSION
STA. 136 + 93.20-138 + 51.20
SN. 009-0013



FULL SIZE PLANS HAVE BEEN PREPARED USING STANDARD ENGINEERING SCALES. REDUCED SIZED PLANS WILL NOT CONFORM TO STANDARD SCALES. IN MAKING MEASUREMENTS ON REDUCED PLANS, THE ABOVE SCALES MAY BE USED.

J.U.L.I.E.
JOINT UTILITY LOCATION INFORMATION FOR EXCAVATION
1-800-892-0123
OR 811

SENIOR TEAM ENGINEER: VINCE MADONIA (217)785-9046
TEAM ENGINEER: VICTOR YOUNG (217)524-0472

GROSS LENGTH = 39,012.22 FT. = 7.39 MILE
NET LENGTH = 38,854.4 FT. = 7.35 MILE

CONTRACT NO. 72F70

STATE OF ILLINOIS
DEPARTMENT OF TRANSPORTATION
DIVISION OF HIGHWAYS

SUBMITTED June 6 2014
Roger L. DiStefano
DEPUTY DIRECTOR OF HIGHWAYS, REGION ENGINEER

June 27 2014
John D. Baranzelli PE
ENGINEER OF DESIGN AND ENVIRONMENT

June 27 2014
Omer Osman PE
DIRECTOR OF HIGHWAYS, CHIEF ENGINEER

**PRINTED BY THE AUTHORITY
OF THE STATE OF ILLINOIS**