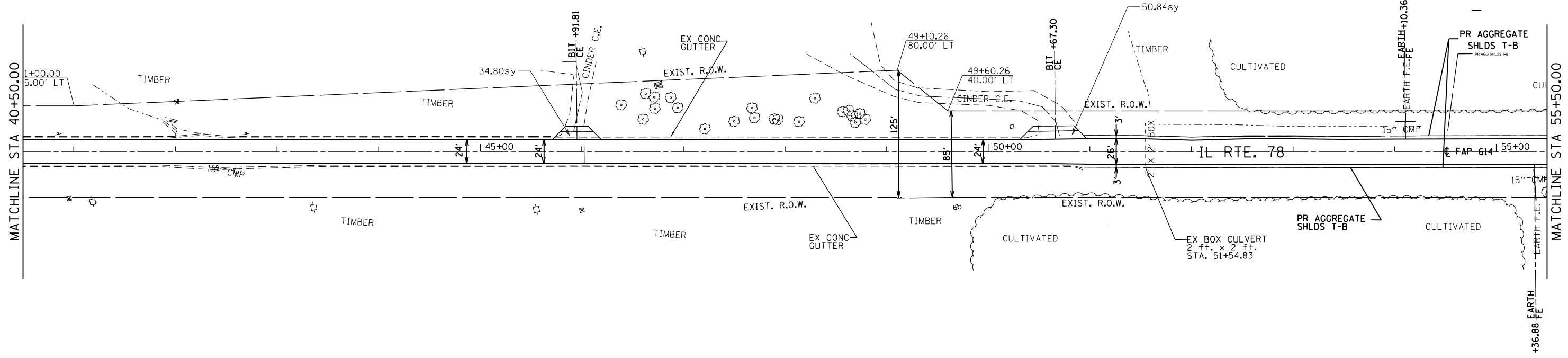
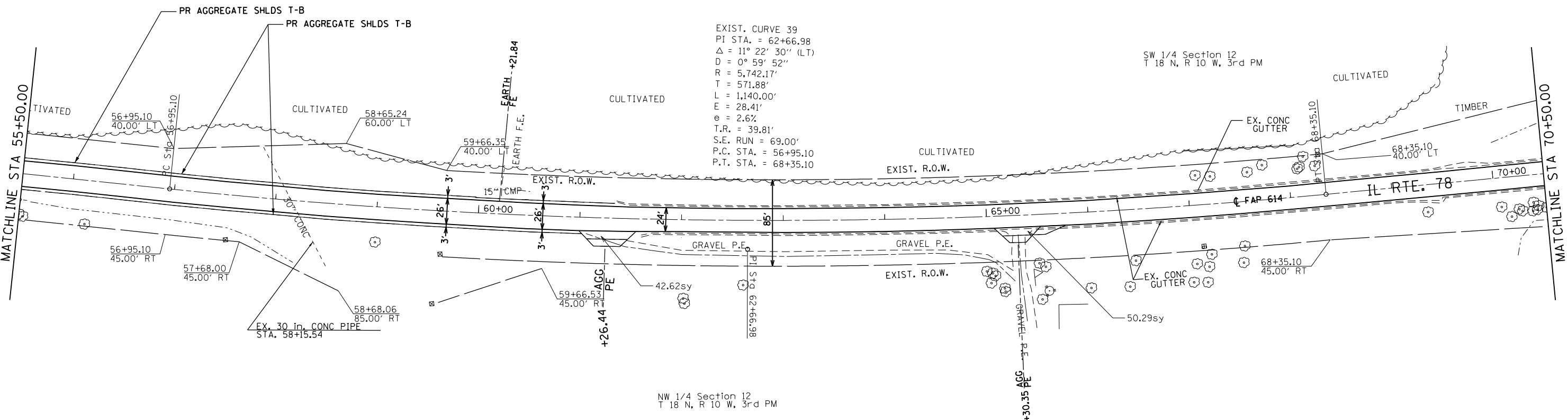


NW 1/4 Section 12
T 18 N, R 10 W, 3rd PM



SW 1/4 Section 12
T 18 N, R 10 W, 3rd PM



EXIST. CURVE 39
PI STA. = 62+66.98
Δ = 11° 22' 30" (LT)
D = 0° 59' 52"
R = 5,742.17'
T = 571.88'
L = 1,140.00'
E = 28.41'
e = 2.6%
T.R. = 39.81'
S.E. RUN = 69.00'
P.C. STA. = 56+95.10
P.T. STA. = 68+35.10

NW 1/4 Section 12
T 18 N, R 10 W, 3rd PM

FILE NAME =	USER NAME = sparksgw	DESIGNED -	REVISED -
ei:\pw\work\p\idot\sparksgw\10313810\0672770-Plan1.dgn		DRAWN -	REVISED -
Default	PLOT SCALE = 100.0000' / in.	CHECKED -	REVISED -
	PLOT DATE = Jun-06-2014 10:51:41AM	DATE -	REVISED -

**STATE OF ILLINOIS
DEPARTMENT OF TRANSPORTATION**

PLAN SHEETS			
SCALE:	SHEET	OF SHEETS	STA. TO STA.

F.A.P. RTE.	SECTION	COUNTY	TOTAL SHEETS	SHEET NO.
614	(146) RS-4	CASS	28	12
CONTRACT NO. 72F70				
ILLINOIS FED. AID PROJECT				