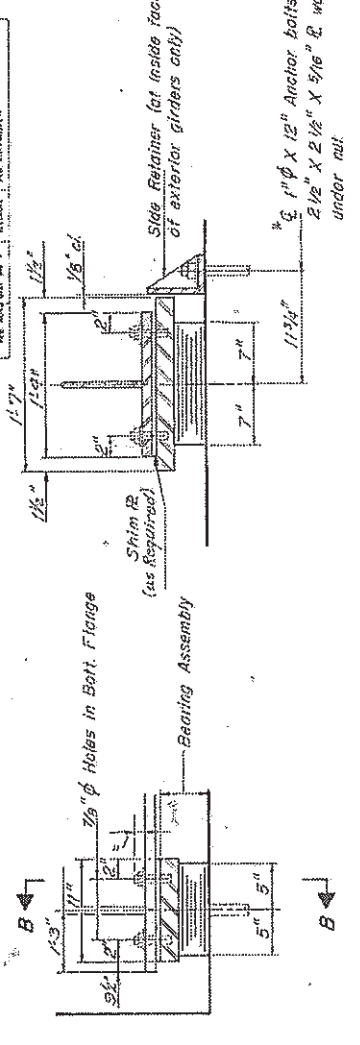
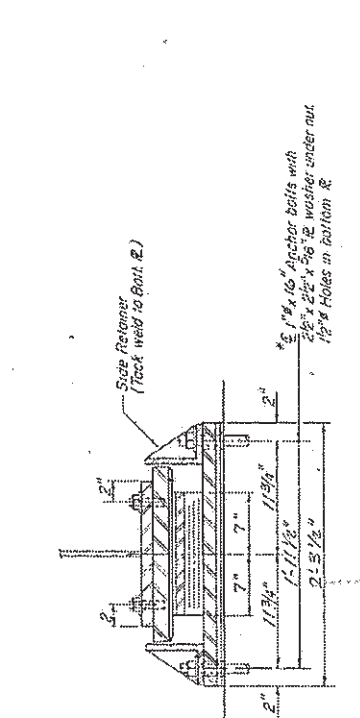


PROJECT NO.	SECTION	DATE	BY
ADAMS	57	5/3	ADAMS



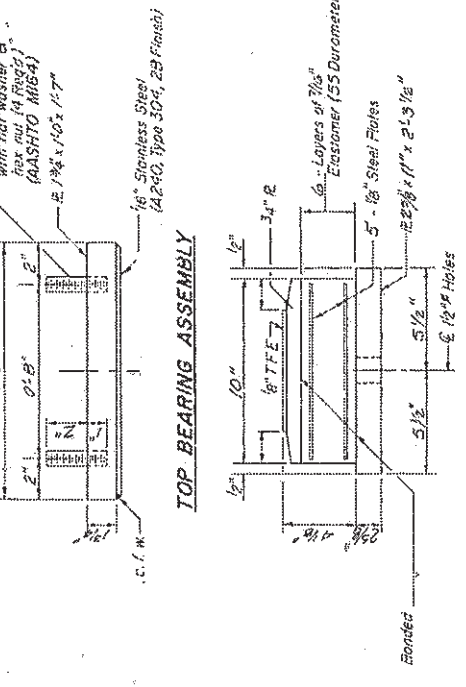
SECTION A-A



SECTION B-B

**TYPE I ELASTOMERIC EXP. BRG.**  
at Abertments 1 and 3

\*Note: After girders have been erected holes of expansion bearings shall be drilled and anchor bolts grouted in place. Anchor bolts at fixed bearings may be bolted into the masonry.

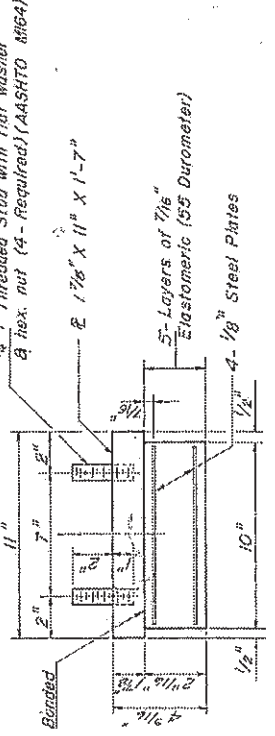


SECTION THRU TFE

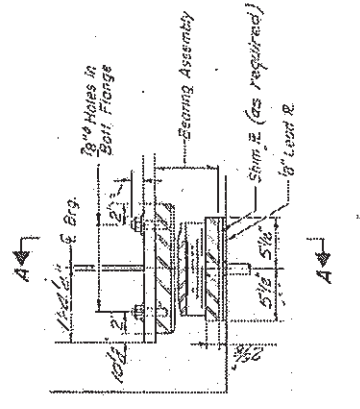
Note: The 1/2" TFE sheet shall be bonded directly to the top steel plate with a two-component, medium viscosity epoxy resin, conforming to the requirements of the Federal Specification, MILM-4-134, Type I. The bond agent shall be applied on the full area of the contact surfaces. Bonding of 1/2" TFE sheet during vulcanizing process will be permitted provided the process and method of adjusting assembly height is approved by the Engineer.

**BEARING ASSEMBLY**

Note: Shim plates shall not be placed under Bearing Assembly.



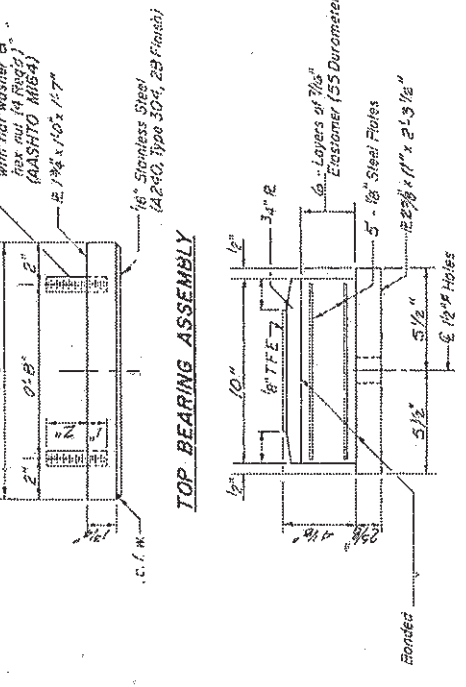
**TYPE II TFE ELASTOMERIC EXP. BRG.**  
at Abertments 2 and 4



SECTION AT ABUT.

**TYPE II TFE ELASTOMERIC EXP. BRG.**  
at Abertments 2 and 4

\*Note: After girders have been erected holes of expansion bearings shall be drilled and anchor bolts grouted in place. Anchor bolts at fixed bearings may be bolted into the masonry.



SECTION THRU TFE

Note: The 1/2" TFE sheet shall be bonded directly to the top steel plate with a two-component, medium viscosity epoxy resin, conforming to the requirements of the Federal Specification, MILM-4-134, Type I. The bond agent shall be applied on the full area of the contact surfaces. Bonding of 1/2" TFE sheet during vulcanizing process will be permitted provided the process and method of adjusting assembly height is approved by the Engineer.

DESIGNED	MVM
CHECKED	JHN
DRAWN	BSS
CHECKED	MVM

I-2-E2 4-1-79

ELASTOMERIC  
BEARING DETAILS  
F.A. RTE. 408 SEC. 1-4B-1  
ADAMS COUNTY  
STA. 181+30.00 F.A. 408