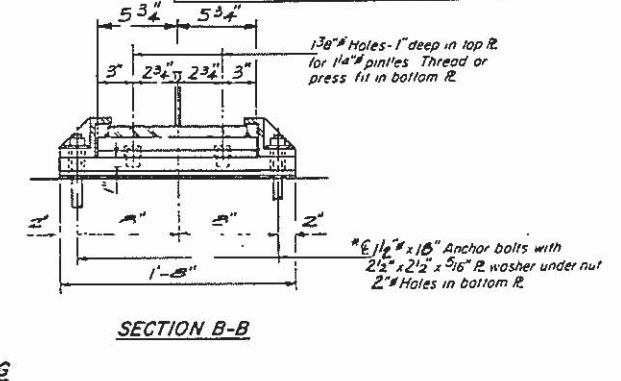
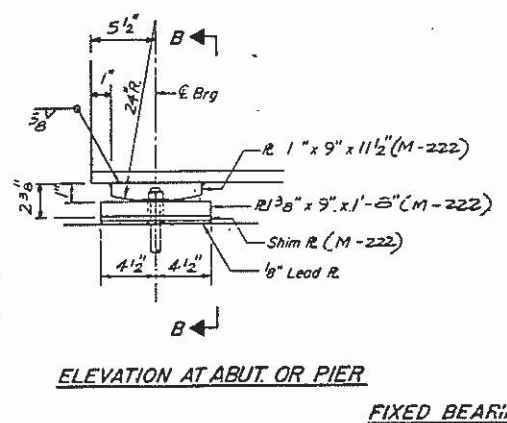
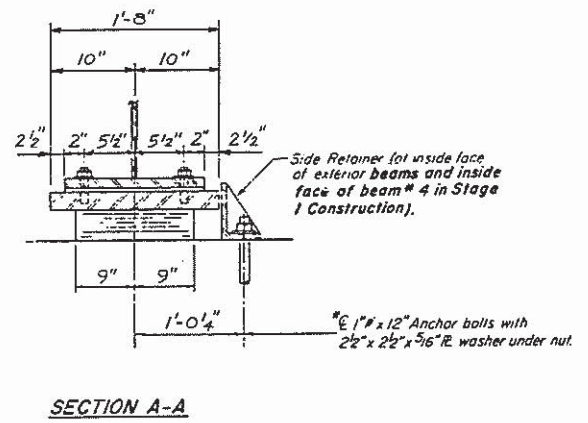
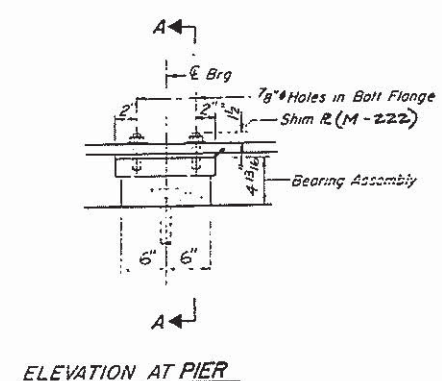


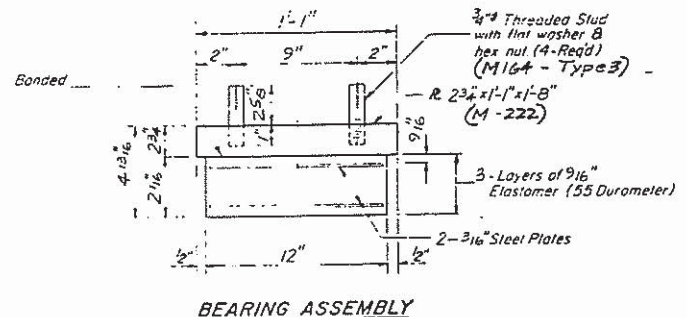
PROJECT NO.	SECTION	DATE	SHEET NO.	SHEET TOTAL
34	2BR-1	Menard	39	24
SHEET NO. 17 OF 26 SHEETS				



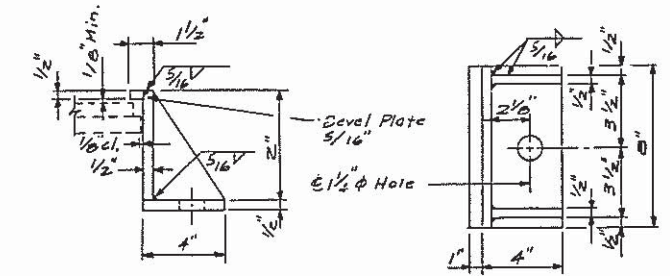
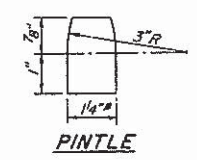
TYPE I ELASTOMERIC EXP. BRG.

*Note: After beams have been erected holes at expansion bearings shall be drilled and anchor bolts grouted in place. Anchor bolts at fixed bearings may be built into the masonry.

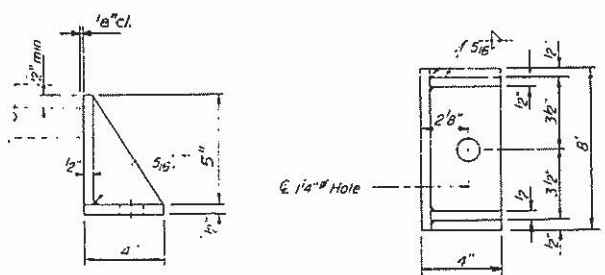
*Note: After beams have been erected holes at expansion bearings shall be drilled and anchor bolts grouted in place. Anchor bolts at fixed bearings may be built into the masonry.



Note Shim plates shall not be placed under Bearing Assembly.



Equivalent rolled angle with stiffeners will be allowed in lieu of welded plates.



Equivalent rolled angle with stiffeners will be allowed in lieu of welded plates.

PIERS 1,5,7 & 11

ABUTMENTS & PIER 6

BEARINGS AT ABUTS. & PIERS 1,5,6,7 & 11
SANGAMON RIVER OVERFLOW BRIDGE
F.A. ROUTE 34 (ILLINOIS ROUTE 97)
SECTION 2BR-1
MENARD COUNTY
STATION 756+00

065-0003

Ralph Hahn and Associates
Consulting and Design Engineers Inc.
1320 South State Street
Springfield, Illinois 62704

SECTION 2BR-1
MENARD COUNTY
STATION 756+00

FILE NAME =	USER NAME = dudlejbm	DESIGNED -	REVISED -	STATE OF ILLINOIS DEPARTMENT OF TRANSPORTATION	EXISTING PLANS SN 065-0003 (FOR INFORMATION ONLY)	F.A. RTE.	SECTION	COUNTY	TOTAL SHEETS	SHEET NO.	
OPERATIONS\Bridges\plans\CAD\72H37 - beam and point FY15 CH\plans\sheet.dgn	DRAWN -	REVISED -	VAR.			D6 BDGE PAINTING 2015-1	VARIOUS	58	14		
PLOT SCALE = 1/8" = 1'-0"	CHECKED -	REVISED -	SCALE:			SHEET	OF	SHEETS	STA.	TO STA.	ILLINOIS FED. AID PROJECT
Default	PLOT DATE = Aug-20-2014 8:14:23PM	DATE -	REVISED -								