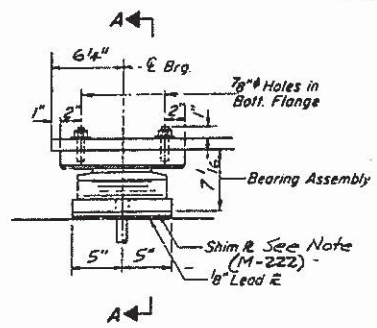


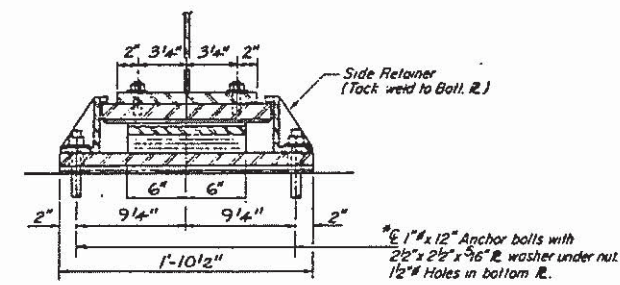
NOTES 1/2" x 10" x 1-10 1/2" Shim Plates (M-222)
 Required @ Beams 1, 2, 3, 4 & 5 @
 Piers 3 & 9. Unit B & C Only.

DATE	DESIGNED	DRAWN	TOTAL SHEETS	SHEET NO.
3/28/11	Menard	'39	26	190

26 SHEETS



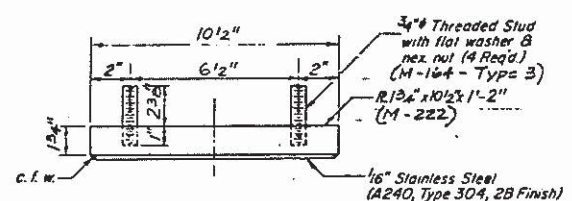
ELEVATION AT PIER



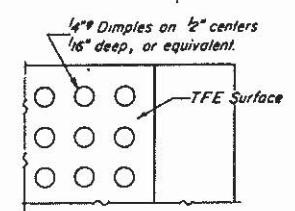
SECTION A-A

TYPE II TFE ELASTOMERIC EXP BRG.

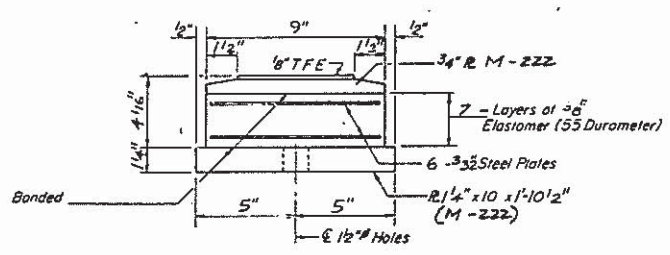
Note: After beams have been erected holes of expansion bearings shall be drilled and anchor bolts grouted in place. Anchor bolts at fixed bearings may be built into the masonry.



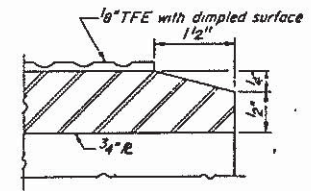
TOP BEARING ASSEMBLY



PLAN-TFE SURFACE



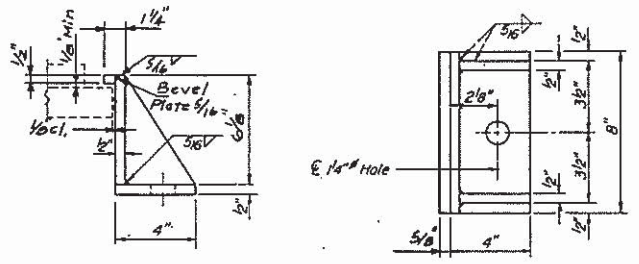
BOTTOM BEARING ASSEMBLY



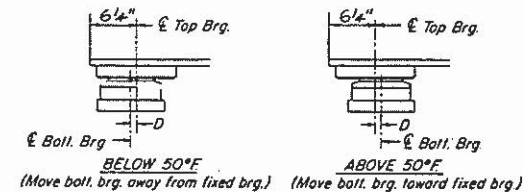
SECTION THRU TFE

Note: The 9" TFE sheet shall be bonded directly to the top steel plate with a two-component, medium viscosity epoxy resin, conforming to the requirements of the Federal Specification MMM-A-134, Type I. The bond agent shall be applied on the full area of the contact surfaces.

Bonding of 9" TFE sheet during vulcanizing process will be permitted provided the process and method of adjusting assembly height is approved by the Engineer.



SIDE RETAINER
 Equivalent rolled angle with stiffeners will be allowed in lieu of welded plates.



SETTING ANCHOR BOLTS AT EXP BRG.
 D = 1/8" per each 100' of expansion for every 15° temp. change from the normal temp. of 50°F

PIERS 3 & 9

BEARINGS AT PIERS 3 & 9
 SANGAMON RIVER OVERFLOW BRIDGE
 F.A. ROUTE 34 (ILLINOIS ROUTE 97)
 SECTION 2BR-1
 MENARD COUNTY
 STATION 756+00

065-0003

Ralph Hahn and Associates
 Consulting and Design Engineers Inc.
 1320 South State Street

F.A. ROUTE 34 (ILLINOIS ROUTE 97)
 SECTION 2BR-1
 MENARD COUNTY

FILE NAME	USER NAME	DESIGNED	REVISED	STATE OF ILLINOIS DEPARTMENT OF TRANSPORTATION	EXISTING PLANS SN 065-0003 (FOR INFORMATION ONLY)	F.A. RTE.	SECTION	COUNTY	TOTAL SHEETS	SHEET NO.
OPERATIONS\Bridges\plans_CAD\72H37 - beam and point FY15 CH\plansheet.dgn	dudlaybm					VAR.	D6 BOGE PAINTING 2015-1	VARIOUS	58	15
PLOT SCALE	CHECKED	DATE	REVISED		SCALE: _____ SHEET _____ OF _____ SHEETS STA. _____ TO STA. _____	ILLINOIS FED. AID PROJECT		CONTRACT NO. 72H37		
PLOT DATE										