

Bench Mark: a Cut on South curb at East abutment, 12' Rl. Sta. 2258+54.00 Elev. 453.90 Old Structure No. 075-0031

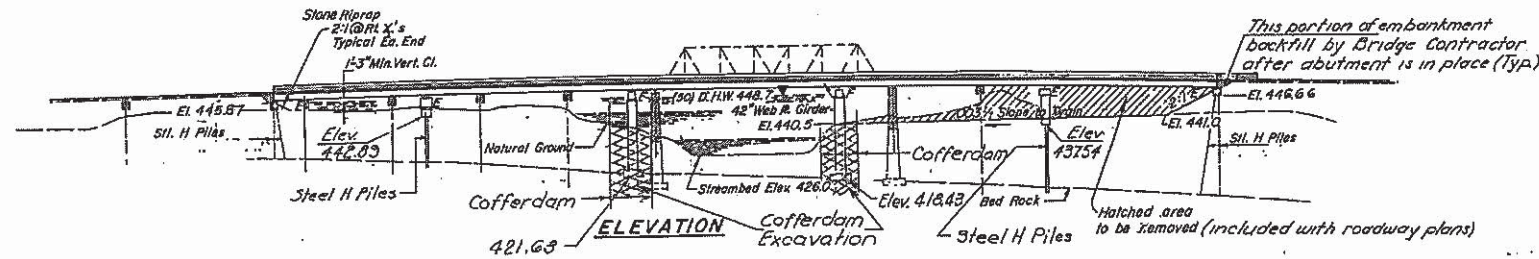
Existing Structure: 449'-1/2" long by 26'-8" cr. to ctr. of Trusses wide, Built as S.B.I. Rte. 105, Sec. 109 B. & C. at Sta. 2257+40.00 in 1934. The existing 7-W' Bm. simple spans and 1-Truss span shall be removed and a new 5-span continuous structure built. Traffic shall be maintained on a temporary bridge and runaround during construction.

STATE OF ILLINOIS
DEPARTMENT OF TRANSPORTATION

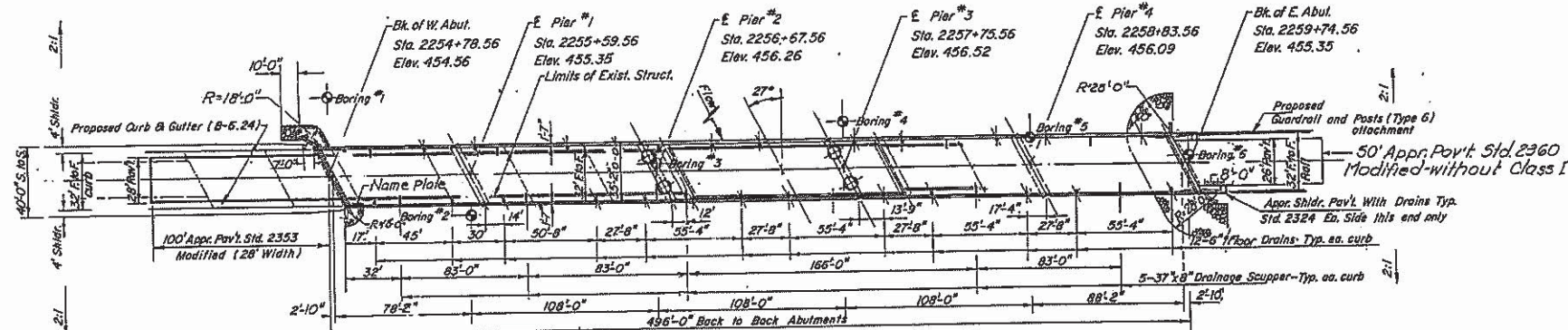
ROUTE NO.	COUNTY	TOTAL SHEETS	SHEET NO.
109 BR	PIKE	45	15

SHEET NO. 1
22 SHEETS

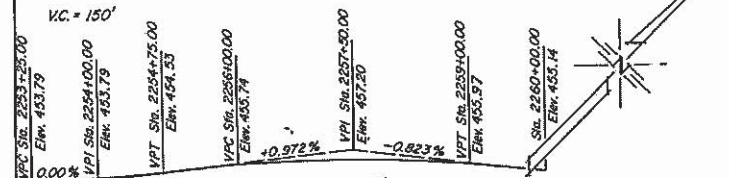
No Salvage.



Note: Cofferdams required for Alternate A (Piers #2 & #3)



PLAN



PROFILE GRADE

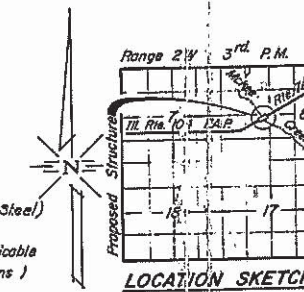
WATERWAY INFORMATION

Drainage Area = 349 sq. mi.		Low Grade Elev. 435.0 (Prop.)		@ Sta.			
Flood	Freq. Yr.	0 C.F.S.	Opening Sq. Ft.	Nat. H. W. E.	Head - Ft.	Headwater El.	
Design	50	18011	2795	3396	448.7	0.11 0.14	448.84
Base	100	20455	3057	3709	449.4	0.84 0.18	449.58
Overlapping							
Max Calc.	500	26028		4303	450.9	0.29	451.19

*Excluding opening of overflow structure, 620 sq. ft. (below the low beam)

DESIGN STRESSES

FIELD UNITS
f_c = 3,500 psi
f_y = 60,000 psi (Reinf.)
f_y = 50,000 psi (AASHTO M222) (Structural Steel)
LOADING HS 20-44
Design Specifications: AASHTO (1977) and applicable Interims (1978, thru 1982 Interim Specifications)
Allow 25' / sq. ft. for future wearing surface.



LOCATION SKETCH

GENERAL PLAN
Illinois Route 104 over McKee Creek
F.A.P. Rte. 745 SECTION 109 BR
PIKE COUNTY
Sta. 2257+40.00

DESIGNED: *[Signature]*
CHECKED: *[Signature]*
DRAWN: *[Signature]*
CHECKED: *[Signature]*

EXAMINED: *[Signature]*
PASSED: *[Signature]*
APPROVED: *[Signature]*

October 4 1983

