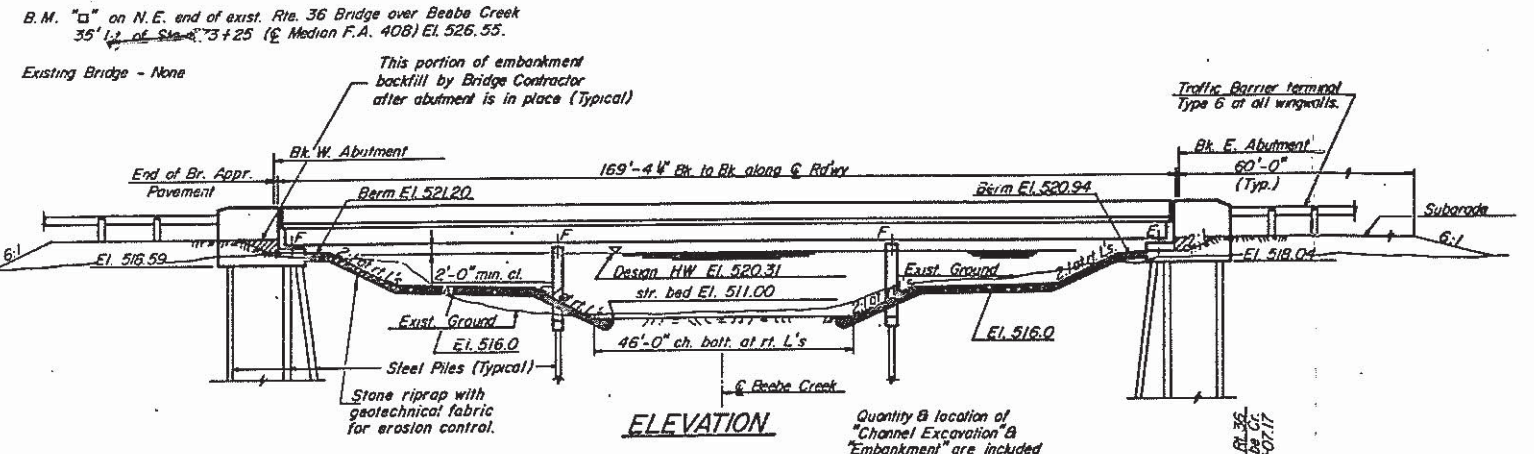


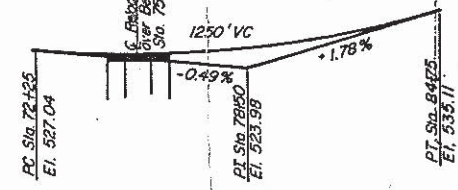
075-0102

ROUTE NO	SECTION	COUNTY	TOTAL SHEETS	SHEET NO
U.S. 36	75-3B-1	PIKE	79	19
FED ROAD DIST NO 7	ILLINOIS PROJECT			SHEET NO. 1 OF 13 SHEETS

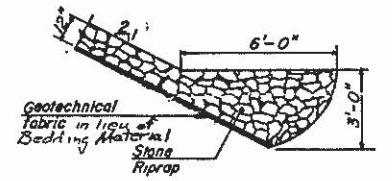


HORIZONTAL CURVE DATA RTE. 36

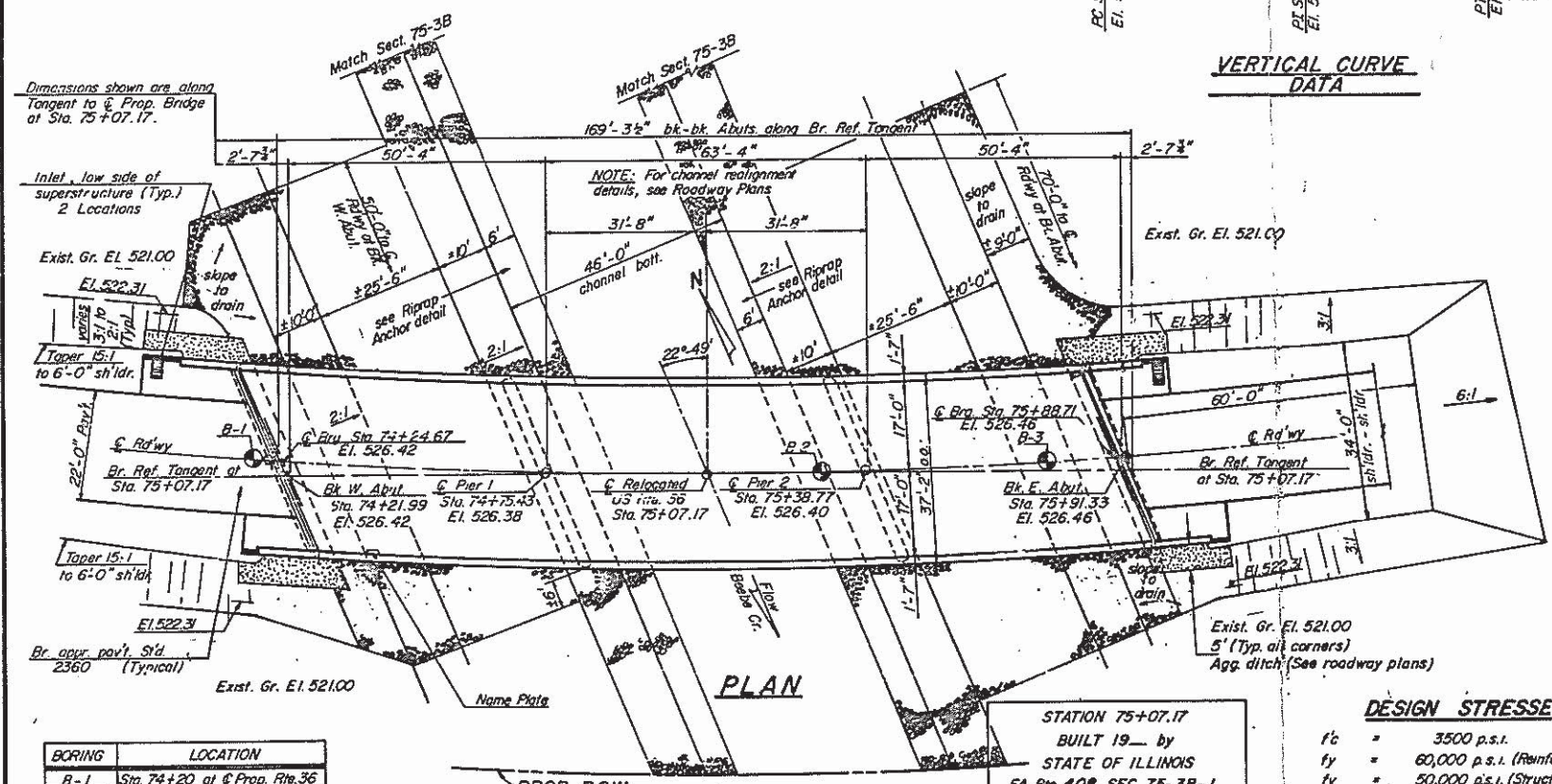
P.I. Sta. 781.9919	R = 3004.79'
Δ = 25°-04'-39"	L = 1315.15'
D = 1°-54'-25"	E = 75.42'
T = 668.28'	S.E. = 0.036 1/2



VERTICAL CURVE DATA

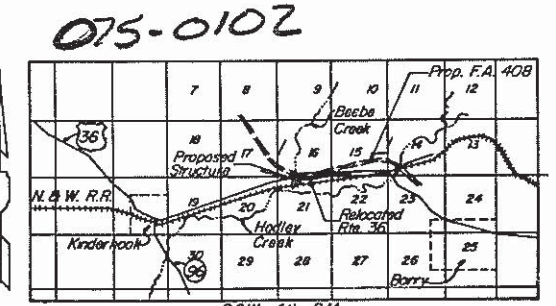


RIPRAP ANCHOR DETAIL



PLAN

APPROVED FOR STRUCTURAL ADEQUACY ONLY
James J. Rayburn



LOCATION MAP

BORING	LOCATION
B-1	Sta. 74+20 at @ Prop. Rte. 36
B-2	Sta. 75+30 at @ Prop. Rte. 36
B-3	Sta. 75+75 at @ Prop. Rte. 36

STATION 75+07.17
BUILT 19__ by
STATE OF ILLINOIS
FA Rte 408 SEC 75-3B-1
LOADING HS-20
STR. NO. 075-0102
LETTERING FOR NAME PLATE
Standard 2113

DESIGN STRESSES

f_c = 3500 p.s.i.
f_y = 60,000 p.s.i. (Reinforcement)
f_y = 50,000 p.s.i. (Structural AASHTO M223, Grade 50)
f_y = 36,000 p.s.i. (M183)
Loading HS-20-44
Design specification - 1983 AASHTO, 1984, & 1985
Interim & AASHTO 1980 Guide Specifications for horizontally curved highway bridges, 1981 & 1982 Interims
25% s.d. allowance for future wearing surface.



REVISIONS		
NO.	BY	DATE

STATE OF ILLINOIS
DEPARTMENT OF TRANSPORTATION
RELOCATED U.S. 36 OVER BEEBE CREEK
FA RTE 408 SEC 75-3B-1
PIKE COUNTY
STATION 75+07.17
GENERAL PLAN & ELEVATION

DESIGNED BY: R.J.	SCALE: _____	JOB NO. _____
DRAWN BY: P.L.S.	DATE: 12/1/86	
CHECKED BY: _____	SHEET 19 OF 79 SHEETS	