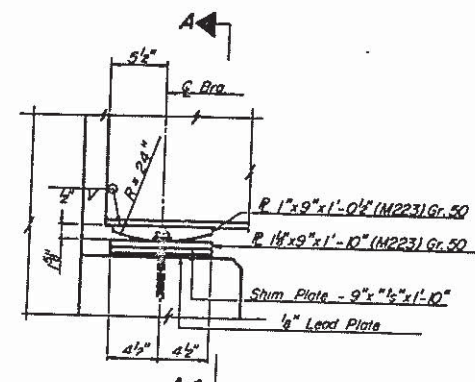
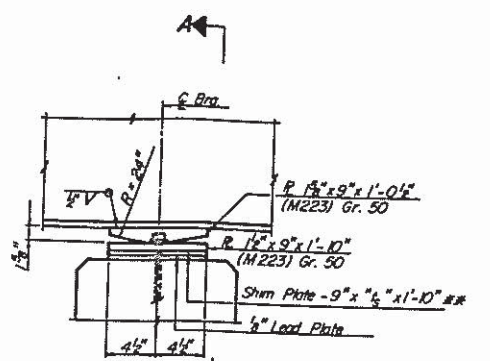


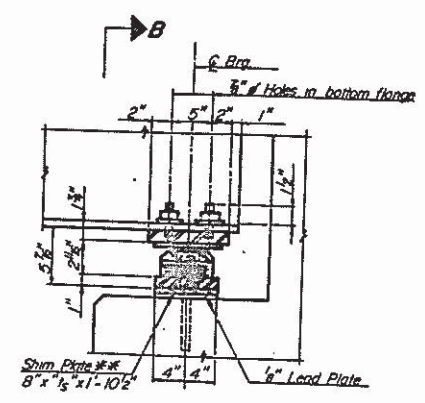
ROUTE NO.	SECTION	COUNTY	TOTAL SHEETS	SHEET NO.
U.S. 36	75-38-1	PIKE	79	26
FED. ROAD DIST. NO. 7	ILLINOIS PROJECT		OF 13 SHEETS	



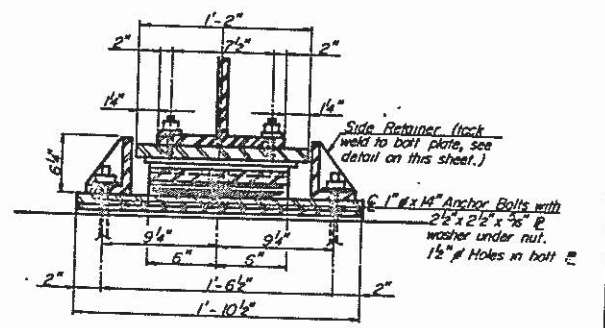
SECTION AT WEST ABUT.



SECTION AT PIERS 1 & 2



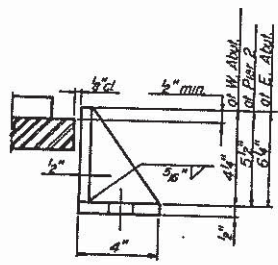
SECTION AT EAST ABUTMENT



SECTION B-B

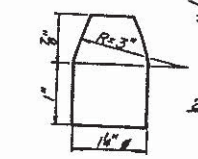
TABLE OF SHIM R. DIMENSIONS "1/8"

	Bm. 1	Bm. 2	Bm. 3	Bm. 4	Bm. 5
at W. Abut. Brgs.	0	1/8"	1/8"	0	1/8"
at Pier 2 Brgs.	0	1/8"	1/8"	1/8"	0
at Pier 1 Brgs.	0	1/8"	0	1/8"	1/8"
at E. Abut. Brgs.	0	1/8"	0	0	0

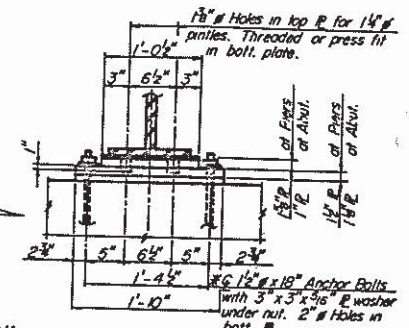


SIDE RETAINER

NOTE: Equivalent rolled angle with stiffeners will be allowed in lieu of the welded plates.



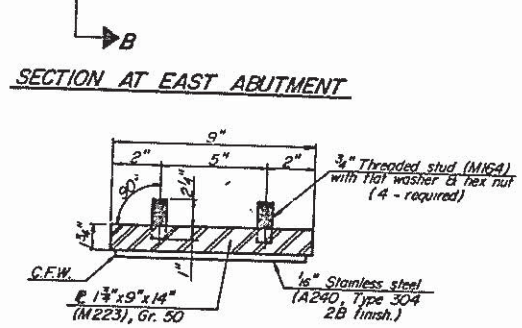
PINTLE DETAIL



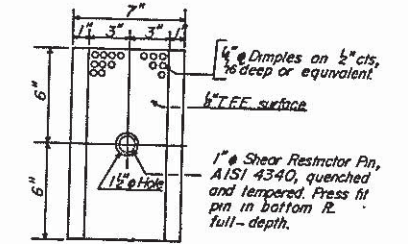
SECTION A-A

**FIXED BEARING DETAILS**

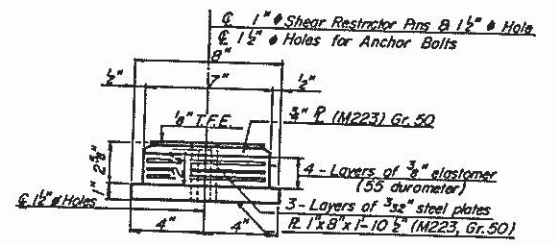
\* After beams have been erected, holes of expansion bearings shall be drilled and anchor bolts grouted in place. Anchor bolts at fixed bearing at one of the piers may be built into the masonry.



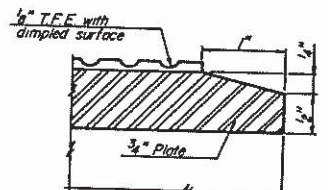
TOP BEARING ASSEMBLY



PLAN T.F.E. SURFACE



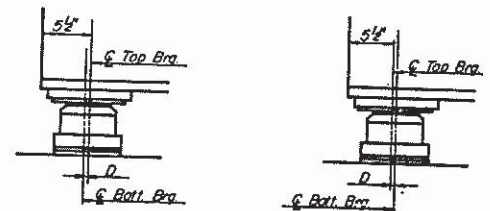
BOTT. BEARING ASSEMBLY



SECTION THRU T.F.E.

**TYPE III ELASTOMERIC EXP. BRG. AT E. ABUT.**

- NOTES:
- The 1/2" T.F.E. sheet shall be bonded directly to top steel plate with a two (2) component, medium viscosity epoxy resin, conforming to the requirements of the Federal Specifications MMM-A-134, Type 1. The bond agent, shall be applied on the full area of the contact surfaces.
  - Bonding of the 1/2" T.F.E. sheet during vulcanizing process will be permitted provided the process and method of adjusting assembly height is approved by the engineer.
  - Threaded studs shall be at right angles to surfaces of plates, typical all bearings.



SETTING ANCHOR BOLTS AT EXP. BRG.

D = 3/8" for every 15° temp. change from the normal temp. of 50°F.

**BILL OF MATERIAL**

Item	Unit	Quantity
Elastomeric Brg. Assy. Type III	ea.	5

**REVISIONS**

NO.	BY	DATE

STATE OF ILLINOIS  
DEPARTMENT OF TRANSPORTATION  
PIKE COUNTY  
F.A. RTE. 408  
SECTION 75-38-1  
STATION 75+07.17  
**BEARING DETAILS**

SCALE: \_\_\_\_\_ JOB NO. \_\_\_\_\_  
DATE 12/19/86

SANDOVAL ENGINEERS, INC.