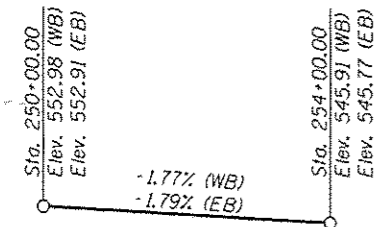


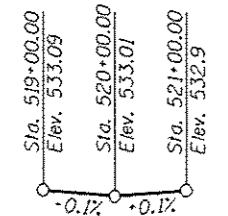
Benchmark: BM 803 - Station 251+35, 22' south of the I-70 eastbound centerline of roadway, chiseled square on the northeast corner of the southeast abutment wingwall on S.N. 018-0040, carrying eastbound I-70 over CR 950E; Elev. 551.82.

Existing structure: Structure No. 018-0040 (EB) and 018-0041 (WB) built in 1969 as F.A.I. Rte. 70, Section 18-45HB-1 at Sta. 251+10.83. Each structure consists of a reinforced concrete deck on 3 span continuous wide flange beams supported on spill through abutments and multi-column piers. 101'-11" back-to-back abutments, 42'-0" out-to-out. Deck is to be removed and replaced. Traffic is to be maintained utilizing stage construction.

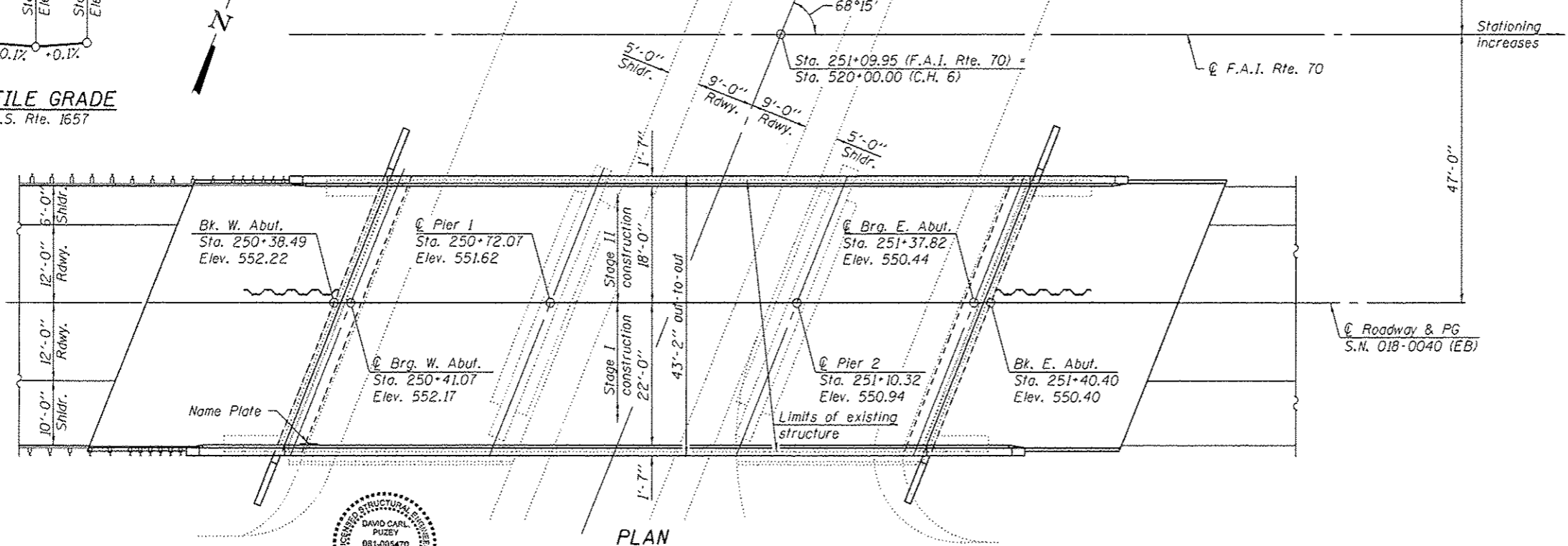
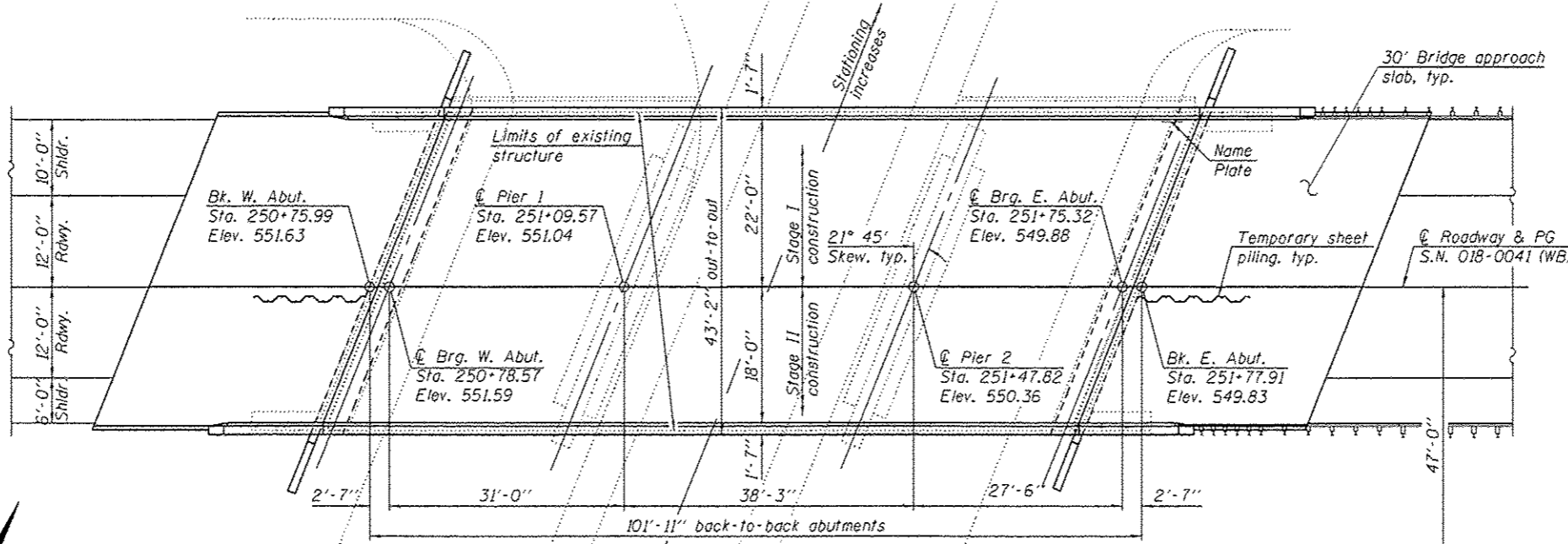
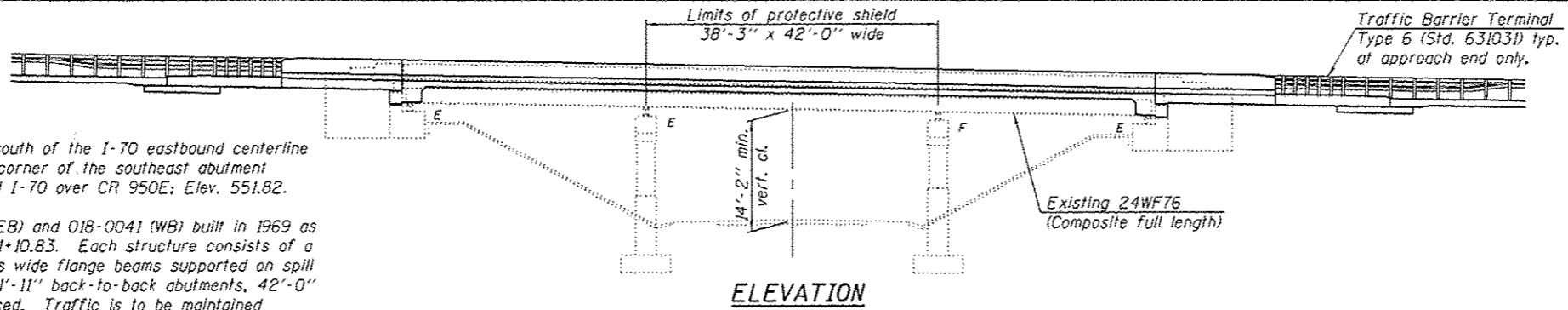
Salvage: None



PROFILE GRADE  
F.A.I. Rte. 70



PROFILE GRADE  
F.A.S. Rte. 1657



EXPIRES 11-30-2014

**DESIGN SPECIFICATIONS**  
2002 AASHTO Standard Specifications for Highway Bridges

**DESIGN STRESSES**

**FIELD UNITS (New construction)**  
f'c = 3,500 psi  
fy = 60,000 psi (Reinforcement)

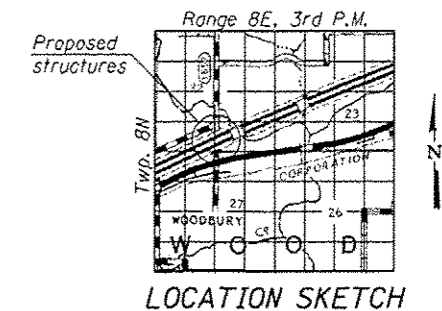
**FIELD UNITS (Existing construction)**  
f'c = 3,500 psi  
fy = 40,000 psi (Reinforcement)  
fy = 36,000 psi (Structural steel)

**LOADING HS20-44 & ALT.**

Allow 50#/sq. ft. for future wearing surface.

**SEISMIC DATA**

Seismic Performance Category (SPC) = A  
Horizontal Bedrock Acceleration Coefficient (A) = 0.065 g  
Site Coefficient (S) = 1.0



**GENERAL PLAN & ELEVATION**  
**I-70 OVER F.A.S. ROUTE 1657**  
**F.A.I. ROUTE 70 - SEC. (18-45HB-1)BR**  
**CUMBERLAND COUNTY**  
**STATION 251+09.95**  
**STRUCTURE NO. 018-0040 (EB)**  
**STRUCTURE NO. 018-0041 (WB)**

DESIGNED - <i>F. Tolson</i>	EXAMINED - <i>Janet F. [Signature]</i>	DATE - 9/16/2014	STATE OF ILLINOIS DEPARTMENT OF TRANSPORTATION	F.A.I. RTE. TO	SECTION (18-45HB-1)BR	COUNTY CUMBERLAND	TOTAL SHEETS 43	SHEET NO. 8
CHECKED - <i>Michael B. Mossman</i>	PASSED - <i>Michael B. Mossman</i>	REVISED		SHEET NO. 1 OF 36 SHEETS	CONTRACT NO. 74187		ILLINOIS FED. AID PROJECT	
DRAWN - <i>Michael B. Mossman</i>	ACTING ENGINEER OF BRIDGES AND STRUCTURES	REVISED						
CHECKED - <i>ETI JONVISA</i>	ACTING ENGINEER OF BRIDGES AND STRUCTURES	REVISED						