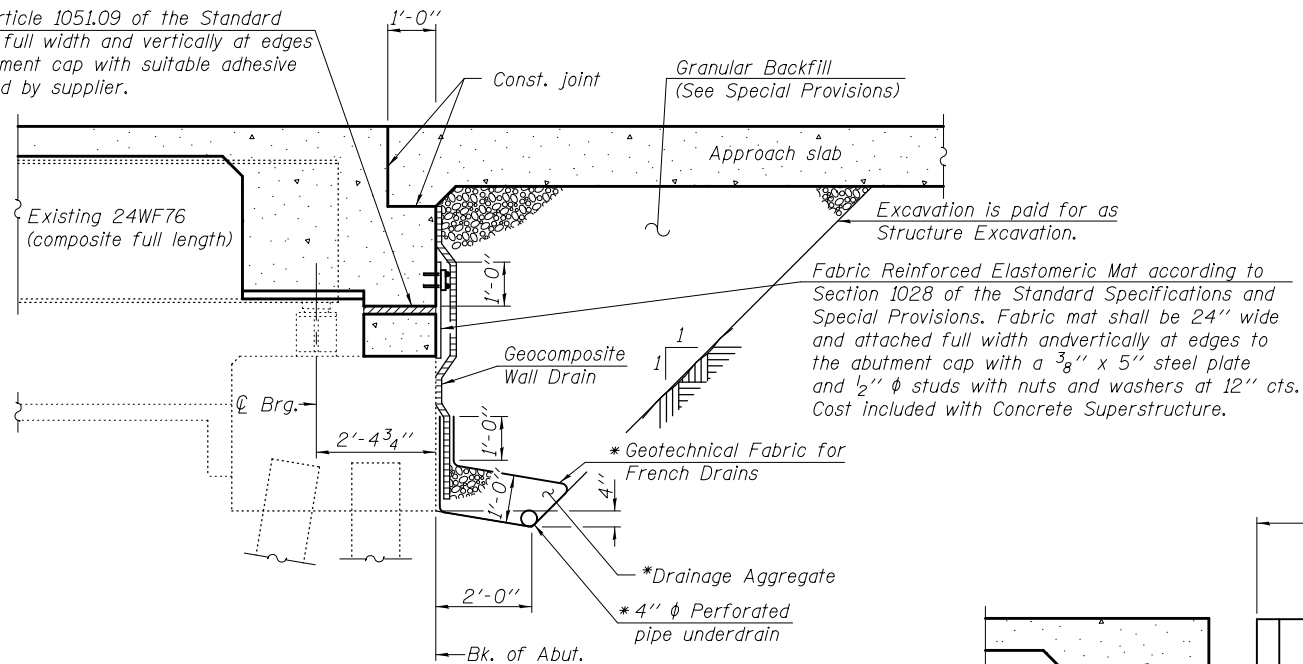


2" PJF (per Article 1051.09 of the Standard Specifications) full width and vertically at edges bonded to abutment cap with suitable adhesive as recommended by supplier.



SECTION THRU SEMI-INTEGRAL ABUTMENT
(Horiz. dim. @ Rt. L's)

* Included in the cost of Pipe Underdrains for Structures.
(See Special Provisions)

Note:
All drainage system components shall extend to 2'-0" from the end of each wingwall except an outlet pipe shall extend until intersecting with the side slopes. The pipes shall drain into concrete headwalls. (See Article 601.05 of the Standard Specifications and Highway Standard 601101).

STATION 251+09.95
RE-BUILT 20 BY
STATE OF ILLINOIS
F.A.I. RTE. 70 - SEC. (18-45HB-1)BR
LOADING HS20-44 & ALT.
STRUCTURE NO. 018-0040 (EB)

STATION 251+09.95
RE-BUILT 20 BY
STATE OF ILLINOIS
F.A.I. RTE. 70 - SEC. (18-45HB-1)BR
LOADING HS20-44 & ALT.
STRUCTURE NO. 018-0041 (WB)

NAME PLATE

See Std. 515001
Existing Name Plates shall be cleaned and relocated next to new Name Plates. Cost included with Name Plates.

TABLE OF ELEVATIONS

Location	North Bridge 018-0041 (WB)	South Bridge 018-0040 (EB)
Elev. A - West Abut.	551.65	552.24
Elev. A - East Abut.	549.85	550.42
Elev. B - West Abut.	543.42	544.19
Elev. B - East Abut.	541.69	542.45
Elev. C - West Abut.	543.09	543.86
Elev. C - East Abut.	541.36	542.12
Elev. D - West Abut.	538.85	539.44
Elev. D - East Abut.	537.05	537.62
Elev. E - West Abut.	530.29	531.06
Elev. E - East Abut.	528.56	529.32

INDEX OF SHEETS

- 1 - General Plan & Elevation
- 2 - General Data
- 3 - Stage Construction Details
- 4 - Temporary Concrete Barrier for Stage Construction
- 5-9 - Top of Slab Elevations
- 10-13 - Top of Approach Slab Elevations
- 14-15 - Superstructure
- 16 - Superstructure Details
- 17 - Diaphragm Details
- 18-21 - Bridge Approach Slab Details
- 22 - Structural Steel Details
- 23-26 - Abutment Removal
- 27-30 - Substructure Repairs
- 31-34 - Abutments
- 35 - Bar Splicer Assembly and Mechanical Splicer Details
- 36 - Cantilever Forming Brackets for Superstructures

GENERAL NOTES

No field welding is permitted except as specified in the contract documents. Reinforcement bars designated (E) shall be epoxy coated. Prior to pouring the new concrete deck, all heavy or loose rust, loose mill scale, and other loose or potentially detrimental foreign material shall be removed from the surfaces in contact with concrete. Tightly adhered paint may remain unless otherwise noted. Removal shall be accomplished by methods that will not damage the steel and the cost will be included in the pay item covering removal of the existing concrete.

As directed by the Engineer, existing construction accessories welded to the top flange of beams and girders shall be removed. The weld areas shall be ground flush and inspected for cracks using magnetic particle testing (MT) or dye penetrant testing (PT) by qualified personnel approved by the Engineer. Any cracks that cannot be removed by grinding 1/4 inch deep shall be identified and reported to the Bureau of Bridges and Structures for further disposition. The cost of removing welded accessories, grinding and inspecting weld areas and grinding cracks will be paid for according to Article 109.04 of the Standard Specifications.

Plan dimensions and details relative to existing plans are subject to nominal construction variations. The Contractor shall field verify existing dimensions and details affecting new construction and make necessary approved adjustments prior to construction or ordering of materials. Such variations shall not be cause for additional compensation for a change in scope of the work, however, the Contractor will be paid for the quantity actually furnished at the unit price bid for the work.

Cleaning and field painting of structural steel shall be done under a separate painting contract.

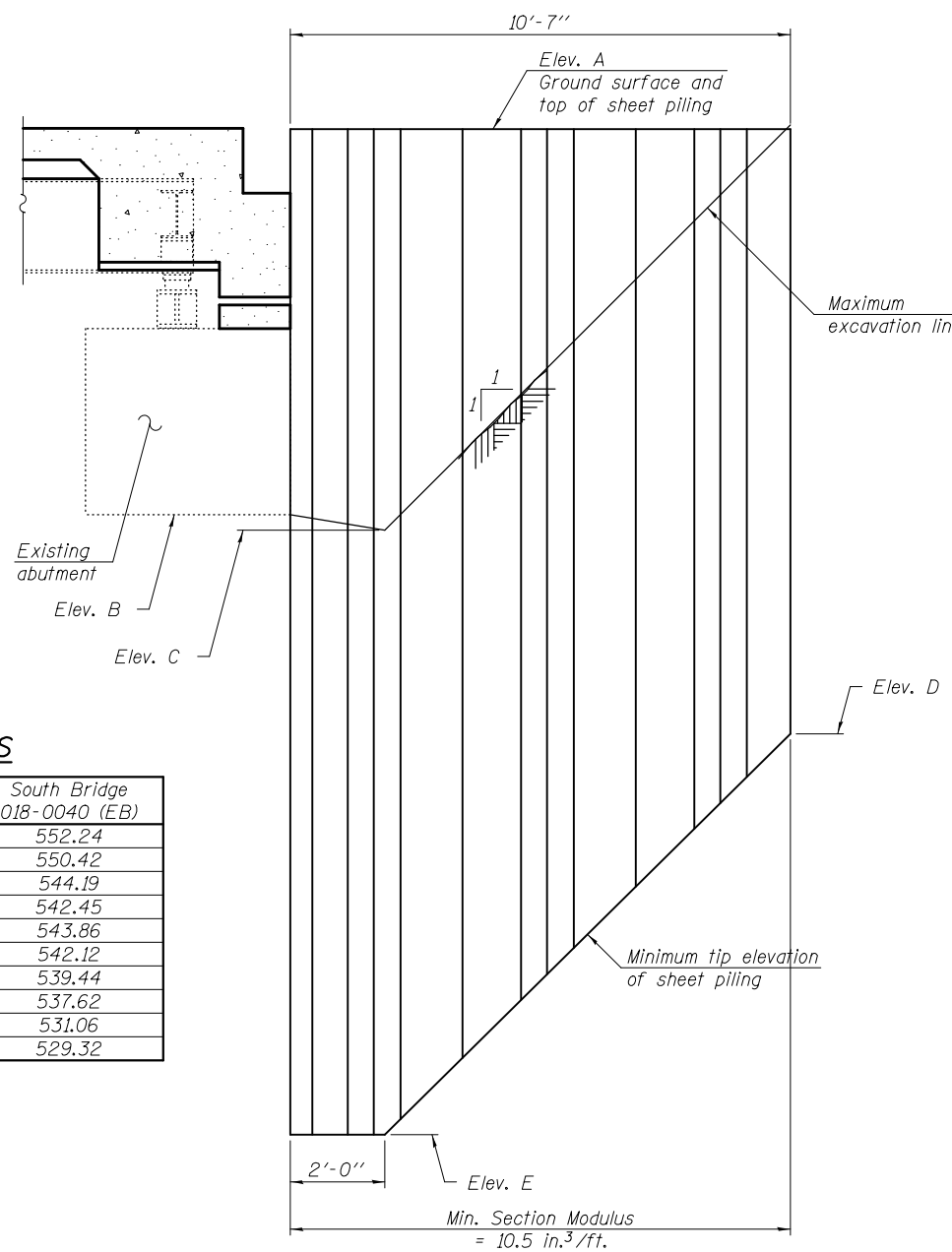
The existing structural steel coating contains lead. The Contractor shall take appropriate precautions to deal with the presence of lead on this project.

If the Contractor chooses to alter the temporary cantilevered sheet piling design requirements shown on the plans, a design submittal including plan details and calculations will be required for review and acceptance by the Engineer.

Slipforming of parapet is not allowed.

TOTAL BILL OF MATERIAL

ITEM	UNIT	SUPER	SUB	TOTAL
Hot-Mix Asphalt Surface Removal (Asbestos)	Sq. Yd.	903.0		903.0
Concrete Removal	Cu. Yd.		68.8	68.8
Removal Of Existing Concrete Deck	Each	2		2
Protective Shield	Sq. Yd.	358		358
Structure Excavation	Cu. Yd.		381	381
Concrete Structures	Cu. Yd.		78.8	78.8
Concrete Superstructure	Cu. Yd.	610.0		610.0
Protective Coat	Sq. Yd.	1653.0		1653.0
Bridge Deck Grooving	Sq. Yd.	1362.0		1362.0
Stud Shear Connectors	Each	6,244		6,244
Reinforcement Bars, Epoxy Coated	Pound	135,540	5,340	140,880
Bar Splicers	Each	860	168	1,028
Name Plates	Each	2		2
Epoxy Crack Injection	Foot		89.0	89.0
Geocomposite Wall Drain	Sq. Yd.		174	174
Granular Backfill For Structures	Cu. Yd.		331.1	331.1
Structural Repair Of Concrete (Depth Greater Than 5 Inches)	Sq. Ft.		2.3	2.3
Temporary Sheet Piling	Sq. Ft.		756.0	756.0
Diamond Grinding (Bridge Section)	Sq. Yd.	1.278		1.278
Pipe Underdrains For Structures 4"	Foot		334	334



TEMPORARY SHEET PILING

DESIGNED - FESSEHA TEKLEHAIMANOT	EXAMINED - <i>Jaime F. [Signature]</i> ACTING ENGINEER OF BRIDGE DESIGN	DATE - SEPTEMBER 16, 2014	STATE OF ILLINOIS DEPARTMENT OF TRANSPORTATION		GENERAL DATA STRUCTURE NO. 018 - 0040 (EB) & 018 - 0041 (WB)		F.A.I. RTE. 70	SECTION (18-45HB-1)BR	COUNTY CUMBERLAND	TOTAL SHEETS 43	SHEET NO. 9
CHECKED - JOSUE ORTIZ-VARELA	PASSED - <i>Carl [Signature]</i> ACTING ENGINEER OF BRIDGES AND STRUCTURES	REVISED					CONTRACT NO. 74187				
DRAWN - MICHAEL B. MOSSMAN		REVISED	SHEET NO. 2 OF 36 SHEETS		ILLINOIS FED. AID PROJECT						
CHECKED - F.T. / J.O.V. / G.R.A.											