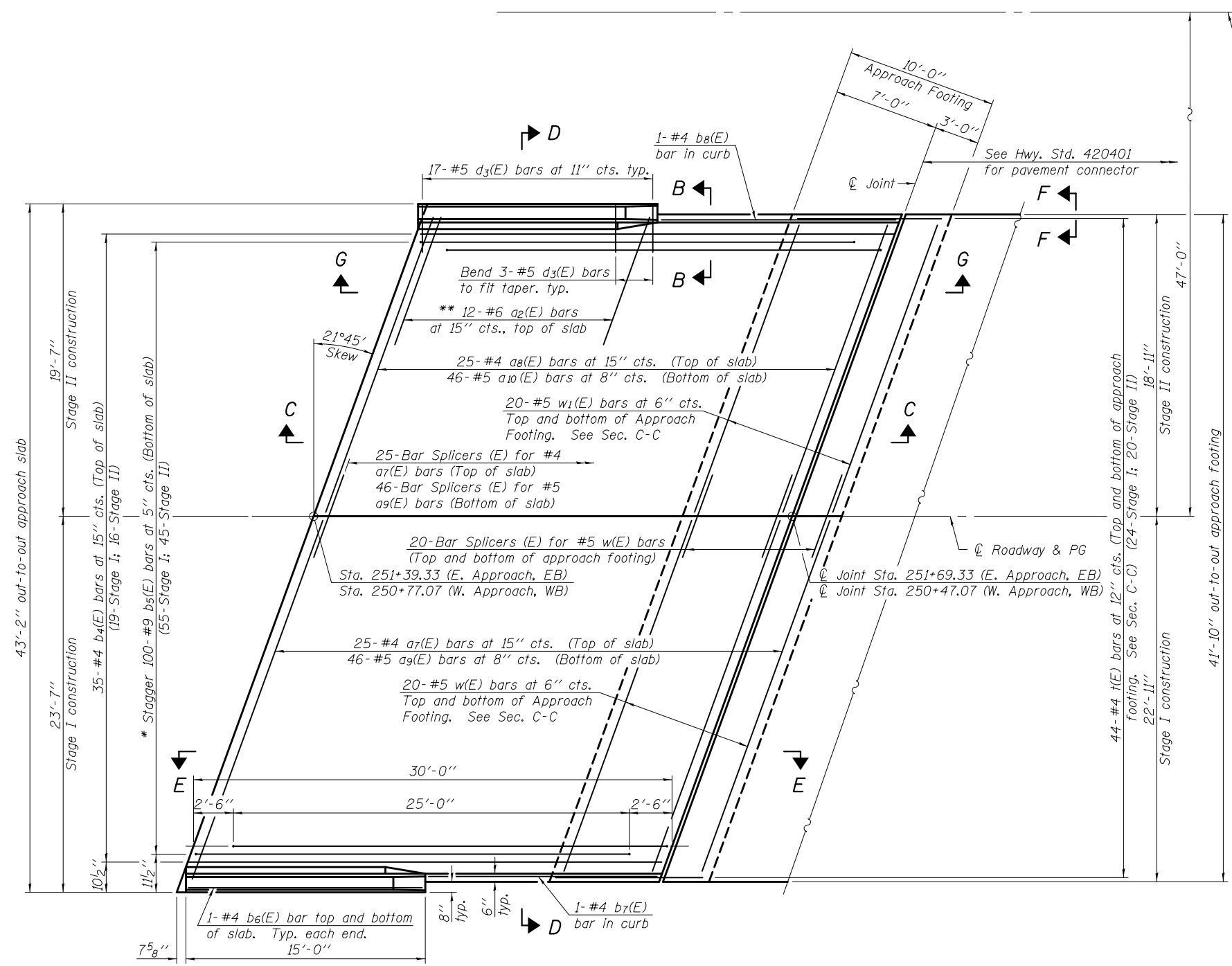


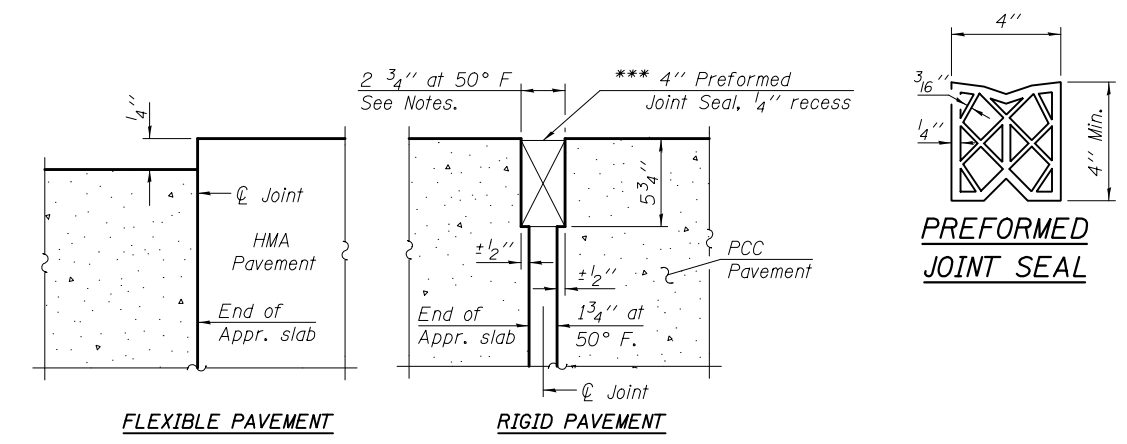
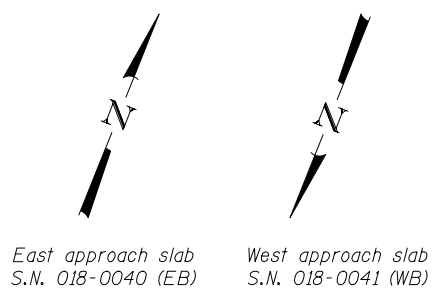
Notes:  
 See sheet 19 of 36 for Sections C-C & D-D and Views E-E & G-G.  
 $a_7(E)$  thru  $a_{10}(E)$  bar spacings measured along  $\text{C.Rdwy.}$   
 The joint opening shall be determined per Article 520.04 except that on jointless structures, the distance described as the bridge length between the nearest fixed bearings each way from the joint shall be taken as half the bridge length plus the approach slab length. The minimum dimension shall be  $1\frac{1}{2}$ " for installation purposes.

\*\*\* Cost included with Concrete Superstructure.

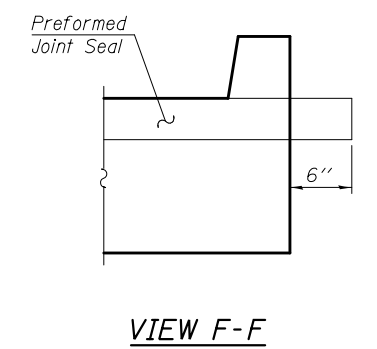


**PLAN**

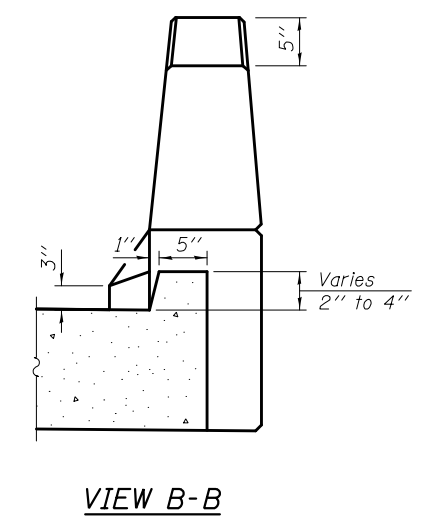
\* Tilt #9  $b_5(E)$  bars as required to maintain clearance.  
 \*\* Space between  $a_7(E)$  and  $a_8(E)$  bars, typ. each parapet.



**DETAIL A**



**VIEW F-F**



**VIEW B-B**

(Sheet 1 of 2)

DESIGNED - FESSEHA TEKLEHAIMANOT	EXAMINED - <i>James F. Schaff</i> ACTING ENGINEER OF BRIDGE DESIGN	DATE - SEPTEMBER 16, 2014	<b>STATE OF ILLINOIS DEPARTMENT OF TRANSPORTATION</b>	<b>EAST (EB) &amp; WEST (WB) BRIDGE APPROACH SLABS STRUCTURE NO. 018 - 0040 (EB) &amp; 018 - 0041 (WB)</b>	F.A.I. R.T.E. - 70	SECTION - (18-45HB-1)BR	COUNTY - CUMBERLAND	TOTAL SHEETS - 43	SHEET NO. - 25
CHECKED - JOSUE ORTIZ-VARELA	PASSED - <i>Carl Perry</i> ACTING ENGINEER OF BRIDGES AND STRUCTURES	REVISED			CONTRACT NO. 74187				
DRAWN - MICHAEL B. MOSSMAN	REVISED	SHEET NO. 18 OF 36 SHEETS							
CHECKED - F.T. / J.O.V. / G.R.A.	REVISED	ILLINOIS FED. AID PROJECT							