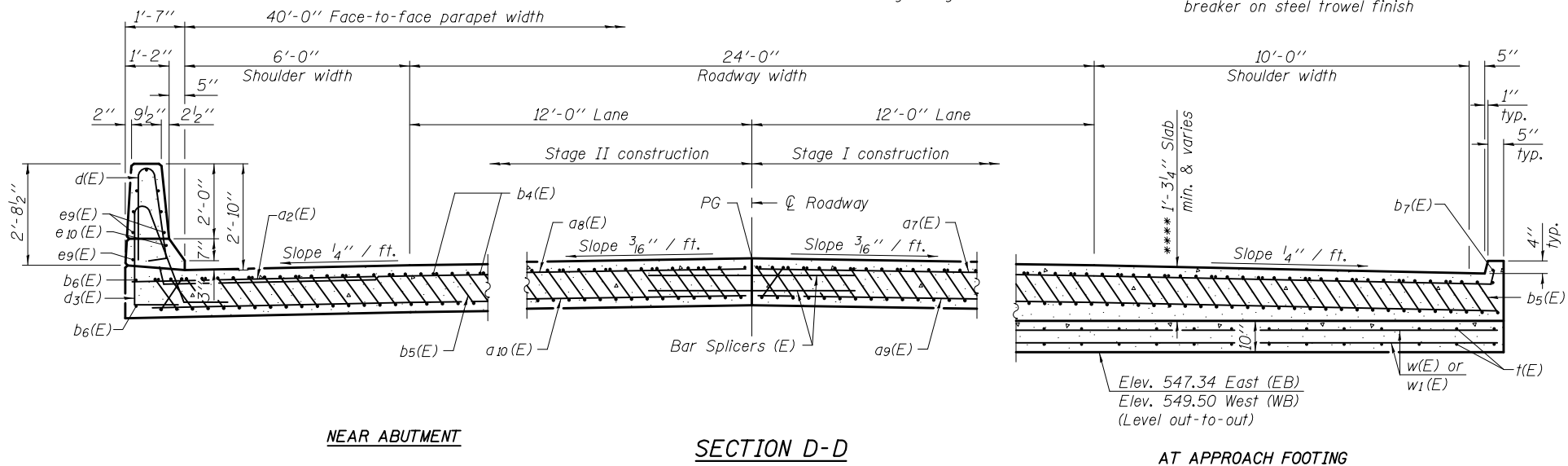
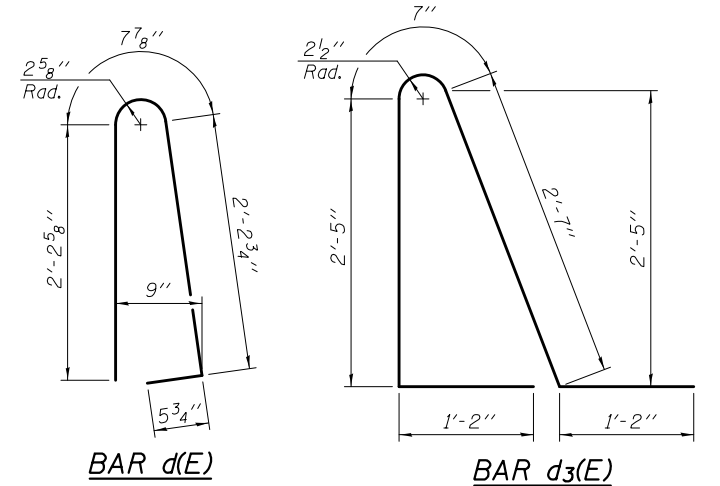
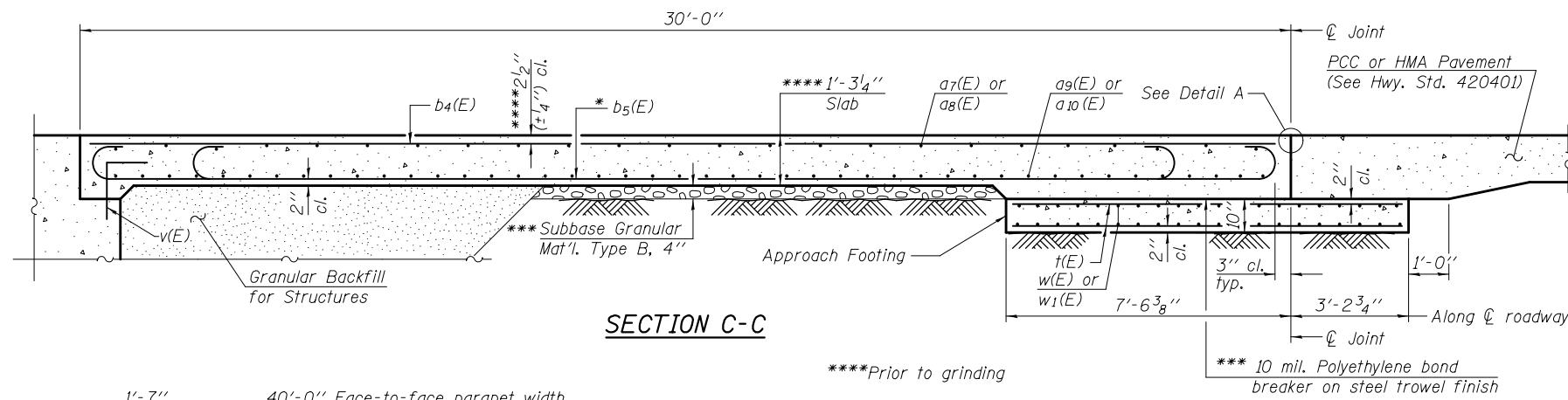


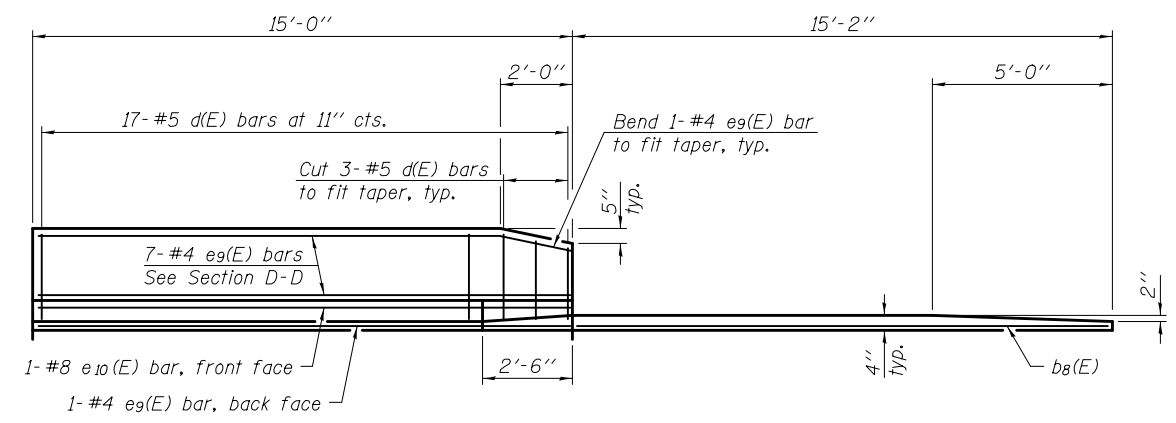
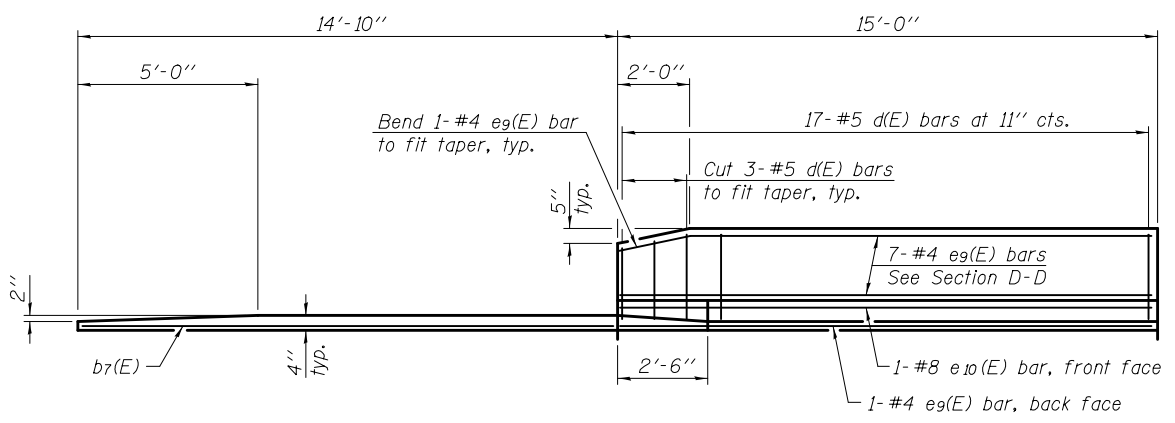
Notes:
 See sheet 18 of 36 for Detail A and View B-B.
 Approach slab and parapet concrete shall be paid for as Concrete Superstructure.
 Approach footing concrete shall be paid for as Concrete Structures.
 Reinforcement shall be paid for as Reinforcement Bars, Epoxy Coated.
 For v(E) bar details, see sheet 16 of 36.
 The approach footing maximum applied service bearing pressure (Q_{max}) = 2.0 ksf.
 For bar splicer details, see sheet 35 of 36.
 Cost of excavation for approach footing included with Concrete Structures.
 For Granular Backfill for Structures and drainage treatment details, see sheet 2 of 36.
 For additional parapet details, see sheet 16 of 36.



* Tilt #9 b₅(E) bars as required to maintain clearance.
 *** Cost included with Concrete Superstructure.

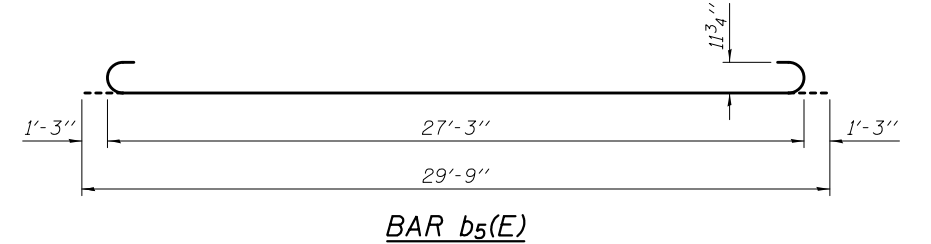
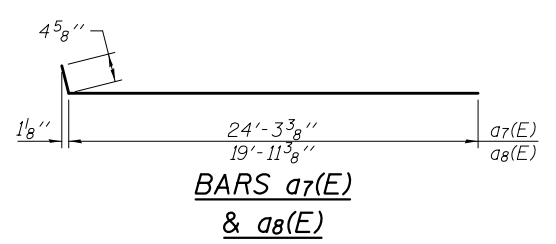
**TWO APPROACHES
 BILL OF MATERIAL**

Bar	No.	Size	Length	Shape
a ₂ (E)	48	#6	6'-6"	—
a ₇ (E)	50	#4	24'-8"	—
a ₈ (E)	50	#4	20'-4"	—
a ₉ (E)	92	#5	24'-4"	—
a ₁₀ (E)	92	#5	20'-0"	—
b ₄ (E)	70	#4	29'-8"	—
b ₅ (E)	200	#9	29'-9"	—
b ₆ (E)	8	#4	14'-8"	—
b ₇ (E)	2	#4	14'-6"	—
b ₈ (E)	2	#4	14'-11"	—
d(E)	68	#5	5'-7"	U
d ₃ (E)	68	#5	7'-11"	U
e ₉ (E)	32	#4	14'-8"	—
e ₁₀ (E)	4	#8	14'-8"	—
t(E)	176	#4	10'-4"	—
w(E)	80	#5	24'-3"	—
w ₁ (E)	80	#5	20'-0"	—
Concrete Superstructure			Cu. Yd.	131.9
Concrete Structures			Cu. Yd.	27.8
Reinforcement Bars, Epoxy Coated			Pound	34,300



VIEW E-E

VIEW G-G



(Sheet 2 of 2)