

F.A.S. RTE.	SECTION	COUNTY	TOTAL SHEETS	SHEET NO.
1806	(2,2Z)RS-2, (2N)	LAWRENCE	82	1
FED. ROAD DIST. NO.	ILLINOIS	CONTRACT NO. 74246		

STATE OF ILLINOIS  
DEPARTMENT OF TRANSPORTATION  
DIVISION OF HIGHWAYS

FOR INDEX OF SHEETS, SEE SHEET NO. 2

**PROPOSED  
HIGHWAY PLANS**

FAS ROUTE 1806 (IL ROUTE 250)  
SECTION (2,2Z)RS-2, (2N)  
RESURFACING  
LAWRENCE COUNTY  
C-97-066-07

STATION EQUATIONS  
STATION 49+09.0 BK = STATION 49+20.2 AH  
STATION 74+97.8 BK = STATION 74+99.5 AH  
STATION 93+99.5 BK = STATION 94+00.0 AH  
STATION 148+34.9 BK = STATION 148+45.7 AH  
STATION 175+69.6 BK = STATION 175+79.3 AH

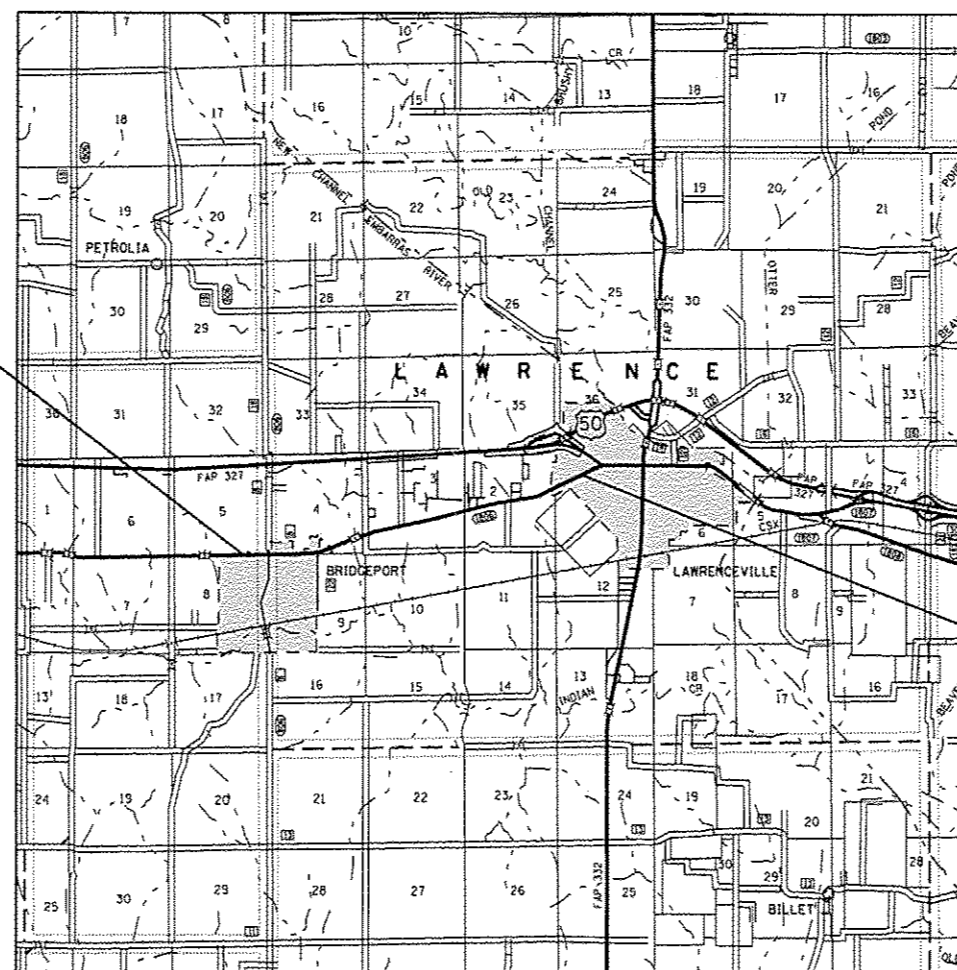
BRIDGE OMISSION

STATION 151+15.0 TO STATION 151+47.0

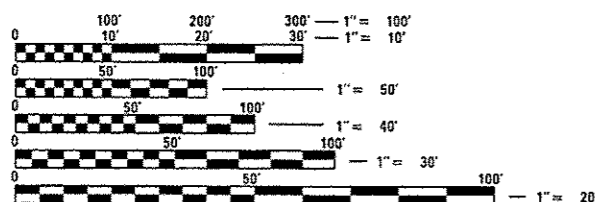
PROJECT ACRS-1806 (103)

ADT = 5260 (2009)

FAS ROUTE 1806 (IL 250)  
SECTION (2,2Z)RS-2, (2N)  
LAWRENCE COUNTY  
ENDS STATION 230+07



FAS ROUTE 1806 (IL 250)  
SECTION (2,2Z)RS-2, (2N)  
LAWRENCE COUNTY  
BEGINS STATION 31+87

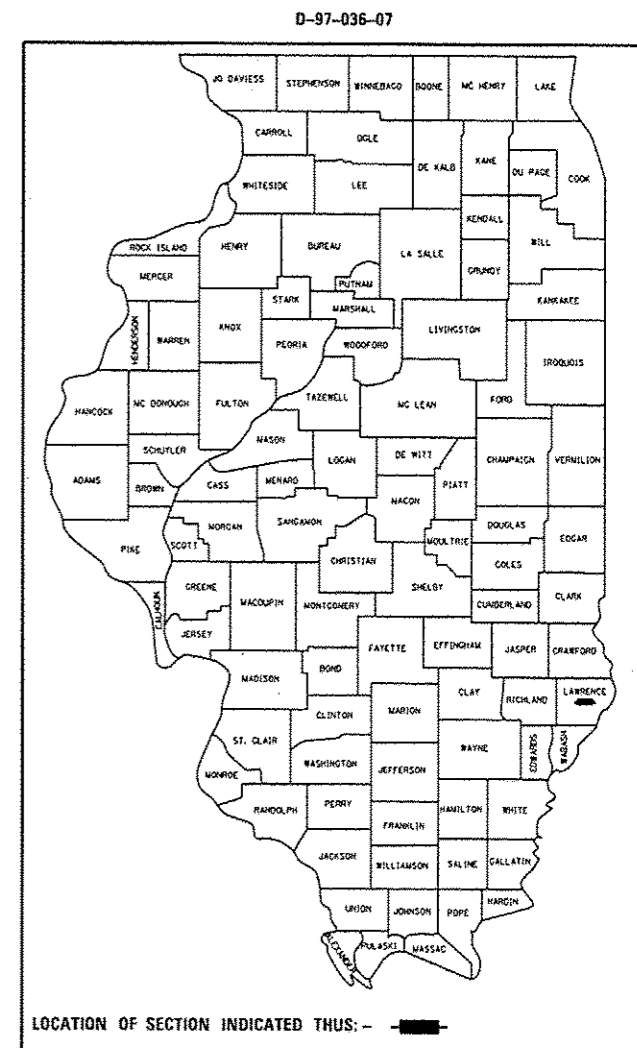


FULL SIZE PLANS HAVE BEEN PREPARED USING STANDARD ENGINEERING SCALES. REDUCED SIZED PLANS WILL NOT CONFORM TO STANDARD SCALES. IN MAKING MEASUREMENTS ON REDUCED PLANS, THE ABOVE SCALES MAY BE USED.

J.U.L.I.E.  
JOINT UTILITY LOCATION INFORMATION FOR EXCAVATION  
1-800-892-0123  
OR 811

PROJECT ENGINEER: TOM RONAN  
PROJECT MANAGER: JENNIFER SHULL  
PHONE: (217)-342-8320  
CONTRACT NO. 74246

GROSS LENGTH = 19,795.0 FEET = 3.8 MILES  
NET LENGTH = 19,763.0 FEET = 3.7 MILES



LOCATION OF SECTION INDICATED THUS: - [black rectangle]

STATE OF ILLINOIS  
DEPARTMENT OF TRANSPORTATION  
DIVISION OF HIGHWAYS  
SUBMITTED August 13 20 14  
Rogin L. Drishel, P.E.  
DEPUTY DIRECTOR OF HIGHWAYS, REGION ENGINEER  
Oct 17 20 14  
John D. Baranzelli, P.E.  
ENGINEER OF DESIGN AND ENVIRONMENT  
Oct 17 20 14  
Omar Osman, P.E.  
DIRECTOR OF HIGHWAYS, CHIEF ENGINEER

PRINTED BY THE AUTHORITY  
OF THE STATE OF ILLINOIS