



LT. STATION 137+75.6
 PIPE CULVERTS, CLASS A, TYPE 1, 18" = 40.0'
 PRECAST REINFORCED CONCRETE FLARED
 END SECTIONS, 18" - 2 EACH
 U.S.F.L. = 448.16
 D.S.F.L. = 447.46

WOVEN WIRE FENCE
 REMOVAL - 240'

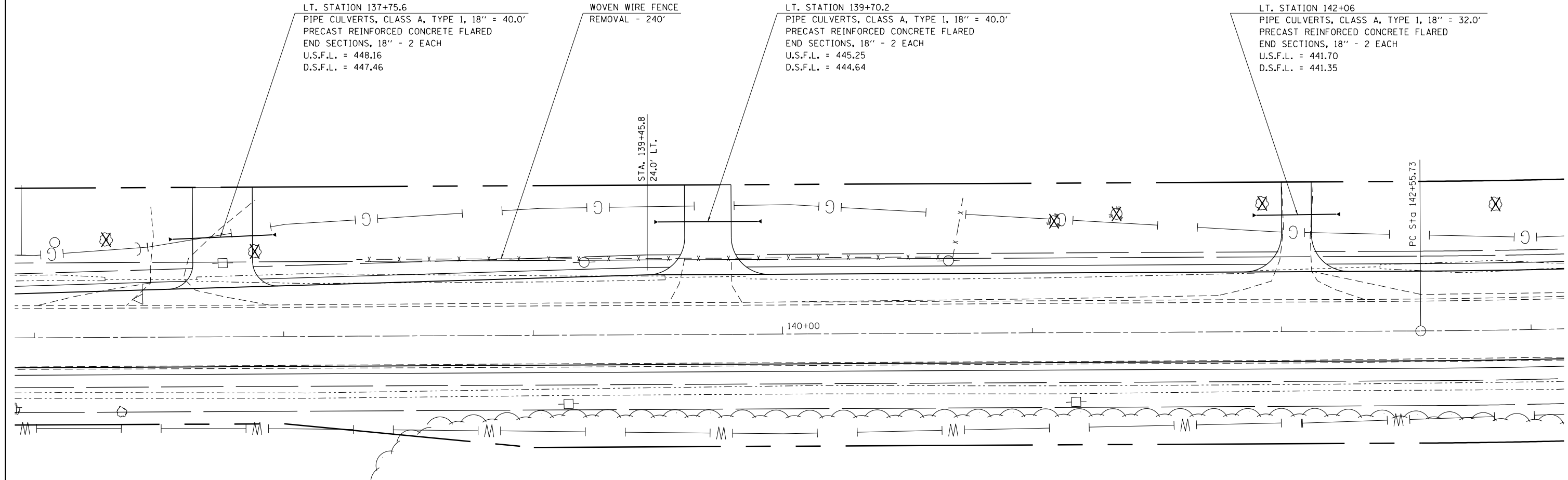
LT. STATION 139+70.2
 PIPE CULVERTS, CLASS A, TYPE 1, 18" = 40.0'
 PRECAST REINFORCED CONCRETE FLARED
 END SECTIONS, 18" - 2 EACH
 U.S.F.L. = 445.25
 D.S.F.L. = 444.64

LT. STATION 142+06
 PIPE CULVERTS, CLASS A, TYPE 1, 18" = 32.0'
 PRECAST REINFORCED CONCRETE FLARED
 END SECTIONS, 18" - 2 EACH
 U.S.F.L. = 441.70
 D.S.F.L. = 441.35

STA. 139+45.8
 24.0' LT.

PC Sta 142+55.73

140+00



| | | | |
|---|-----------------------------|------------|-----------|
| FILE NAME = | USER NAME = steffenmk | DESIGNED - | REVISED - |
| c:\pwork\pwork\dot\stefenmk\dms52738\0774246-sht-intersection.dgn | | DRAWN - | REVISED - |
| Default | PLOT SCALE = 40.0000' / in. | CHECKED - | REVISED - |
| | PLOT DATE = 8/13/2014 | DATE - | REVISED - |

**STATE OF ILLINOIS
 DEPARTMENT OF TRANSPORTATION**

INTERSECTION DETAIL PLAN

SCALE: 20 SHEET 2 OF 5 SHEETS STA. 137+00 TO STA. 143+00

| F.A.S. RTE. | SECTION | COUNTY | TOTAL SHEETS | SHEET NO. |
|---------------------------|------------------|----------|--------------|-----------|
| 1806 | (2,2Z)RS-2, (2N) | LAWRENCE | 82 | 36 |
| CONTRACT NO. 74246 | | | | |
| ILLINOIS FED. AID PROJECT | | | | |