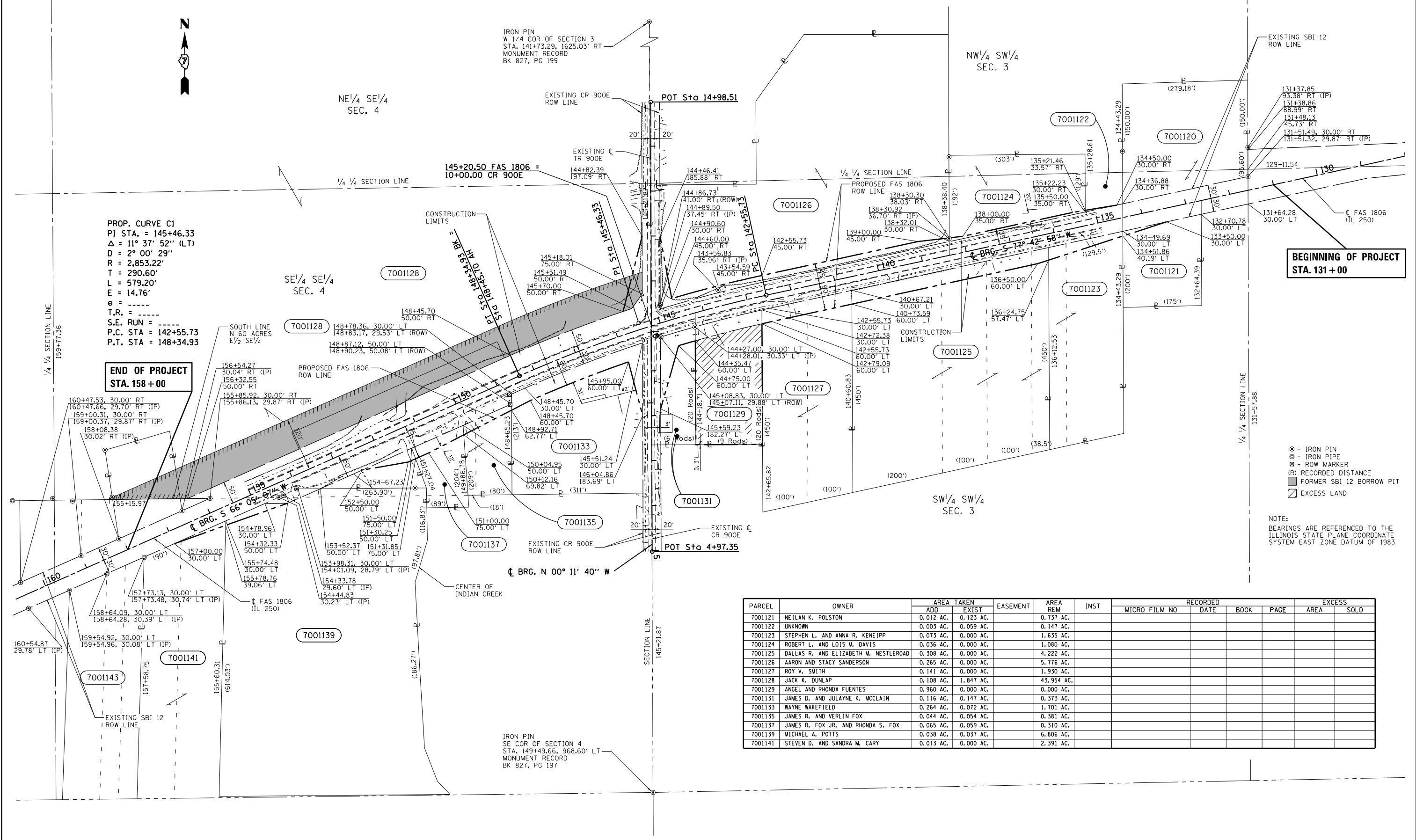


T.3N.-R.12W., 2nd P.M., LAWRENCE TWP.



PROP. CURVE C1
 PI STA. = 145+46.33
 Δ = 11° 37' 52" (LT)
 D = 2° 00' 29"
 R = 2,853.22'
 T = 290.60'
 L = 579.20'
 E = 14.76'
 e = -----
 T.R. = -----
 S.E. RUN = -----
 P.C. STA = 142+55.73
 P.T. STA = 148+34.93

**END OF PROJECT
 STA. 158+00**

**BEGINNING OF PROJECT
 STA. 131+00**

- - IRON PIN
- - IRON PIPE
- ⊗ - ROW MARKER
- (R) RECORDED DISTANCE
- ▨ FORMER SBI 12 BORROW PIT
- ▩ EXCESS LAND

NOTE:
 BEARINGS ARE REFERENCED TO THE
 ILLINOIS STATE PLANE COORDINATE
 SYSTEM EAST ZONE DATUM OF 1983

PARCEL	OWNER	AREA TAKEN		EASEMENT	AREA REM	INST	RECORDED			EXCESS	
		ADD	EXIST				MICRO FILM NO	DATE	BOOK	PAGE	AREA
7001121	NEILAN K. POLSTON	0.012 AC.	0.123 AC.		0.737 AC.						
7001122	UNKNOWN	0.003 AC.	0.059 AC.		0.147 AC.						
7001123	STEPHEN L. AND ANNA R. KENEIPP	0.073 AC.	0.000 AC.		1.635 AC.						
7001124	ROBERT L. AND LOIS M. DAVIS	0.036 AC.	0.000 AC.		1.080 AC.						
7001125	DALLAS R. AND ELIZABETH M. NESTLEROD	0.308 AC.	0.000 AC.		4.222 AC.						
7001126	AARON AND STACY SANDERSON	0.265 AC.	0.000 AC.		5.776 AC.						
7001127	ROY V. SMITH	0.141 AC.	0.000 AC.		1.930 AC.						
7001128	JACK K. DUNLAP	0.108 AC.	1.847 AC.		43.954 AC.						
7001129	ANGEL AND RHONDA FUENTES	0.960 AC.	0.000 AC.		0.000 AC.						
7001131	JAMES D. AND JULAYNE K. MCCLAIN	0.116 AC.	0.147 AC.		0.373 AC.						
7001133	WAYNE WAKEFIELD	0.264 AC.	0.072 AC.		1.701 AC.						
7001135	JAMES R. AND VERLIN FOX	0.044 AC.	0.054 AC.		0.381 AC.						
7001137	JAMES R. FOX JR. AND RHONDA S. FOX	0.065 AC.	0.059 AC.		0.310 AC.						
7001139	MICHAEL A. POTTS	0.038 AC.	0.037 AC.		6.806 AC.						
7001141	STEVEN D. AND SANDRA M. CARY	0.013 AC.	0.000 AC.		2.391 AC.						

FILE NAME = D774246-sht-row.dgn	USER NAME = steffenik	DESIGNED - JMD	REVISED -
		DRAWN - JMD	REVISED -
		CHECKED - JMD	REVISED -
		DATE - 06/17/11	REVISED -

STATE OF ILLINOIS
 DEPARTMENT OF TRANSPORTATION

RIGHT OF WAY PLANS	
PROJECT	JOB NO. R-97-001-10
SCALE: 1" = 100'	SHEET NO. 1 OF 1 SHEETS
	STA. 130+00.00 TO STA. 160+00.00

F.A.S. R.E. 1806	SECTION (2,2Z)RS-2, (2N)	COUNTY LAWRENCE	TOTAL SHEETS 82	SHEET NO. 50
FED. ROAD DIST. NO.		ILLINOIS FED. AID PROJECT		
		CONTRACT NO. 74246		