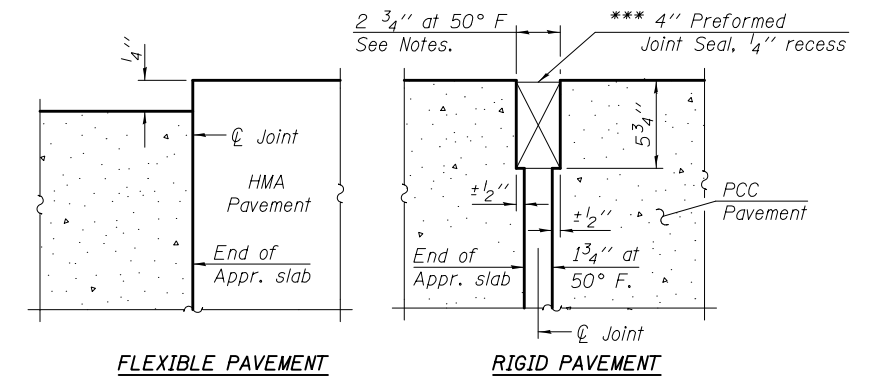
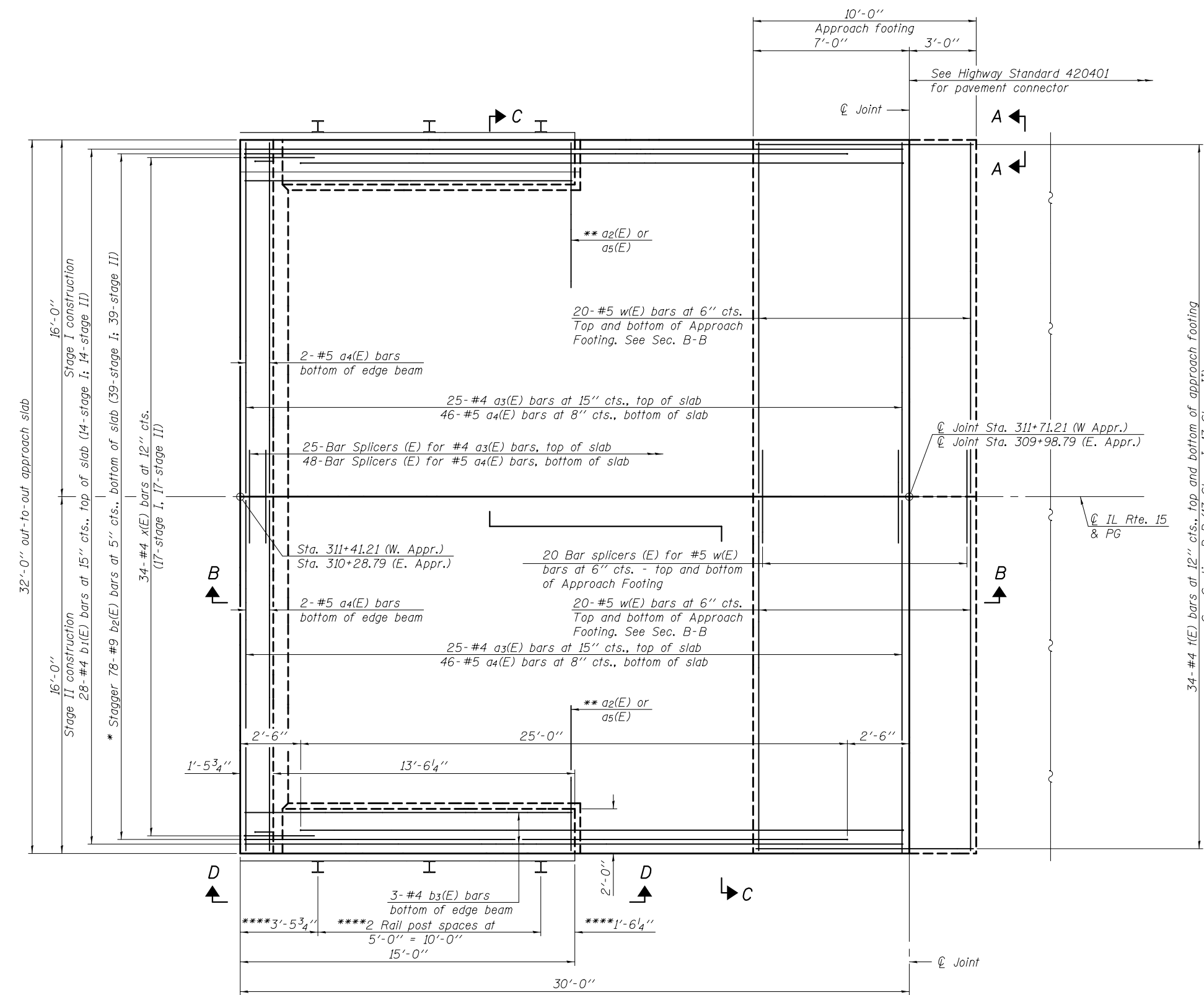
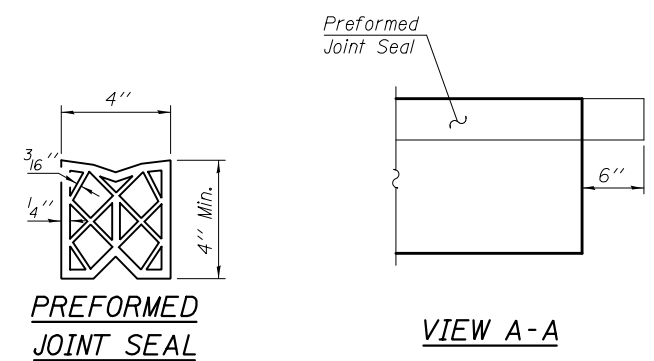


Notes:
 See sheet 13 of 18 for Sections B-B & C-C and View D-D.
 The joint opening shall be determined per Article 520.04 except that on jointless structures, the distance described as the bridge length between the nearest fixed bearings each way from the joint shall be taken as half the bridge length plus the approach slab length. The minimum dimension shall be 1/2" for installation purposes.
 See sheet 14 of 18 for Steel Railing, Type SM details.



DETAIL A



PREFORMED JOINT SEAL

VIEW A-A

PLAN
 (West approach slab shown; East approach slab similar by 180° rotation)

* Tilt #9 b₂(E) bars as required to maintain clearance. **** Type SM railing shall be used in all approach corners except N.E. corner. See sheet 1 of 18.
 ** See sheet 13 of 18 for View D-D showing additional reinforcement in edge beams for the side mount railing.
 *** Cost included with Concrete Superstructure.

(Sheet 1 of 2)

DESIGNED - IRENE PANTOJA	EXAMINED - <i>James F. [Signature]</i> ACTING ENGINEER OF BRIDGE DESIGN	DATE - SEPTEMBER 16, 2014	STATE OF ILLINOIS DEPARTMENT OF TRANSPORTATION	BRIDGE APPROACH SLAB DETAILS STRUCTURE NO. 096 - 0063		F.A.P. RTE. 823	SECTION (22BR2)BR	COUNTY WAYNE	TOTAL SHEETS 34	SHEET NO. 28	
CHECKED - JOSUE D. ORTIZ-VARELA	PASSED - <i>Carl [Signature]</i> ACTING ENGINEER OF BRIDGES AND STRUCTURES	REVISED		SHEET NO. 12 OF 18 SHEETS		ILLINOIS FED. AID PROJECT		CONTRACT NO. 74365			
DRAWN - MICHAEL B. MOSSMAN		REVISED									
CHECKED - J.O.V. / I.P. / G.R.A.		REVISED									