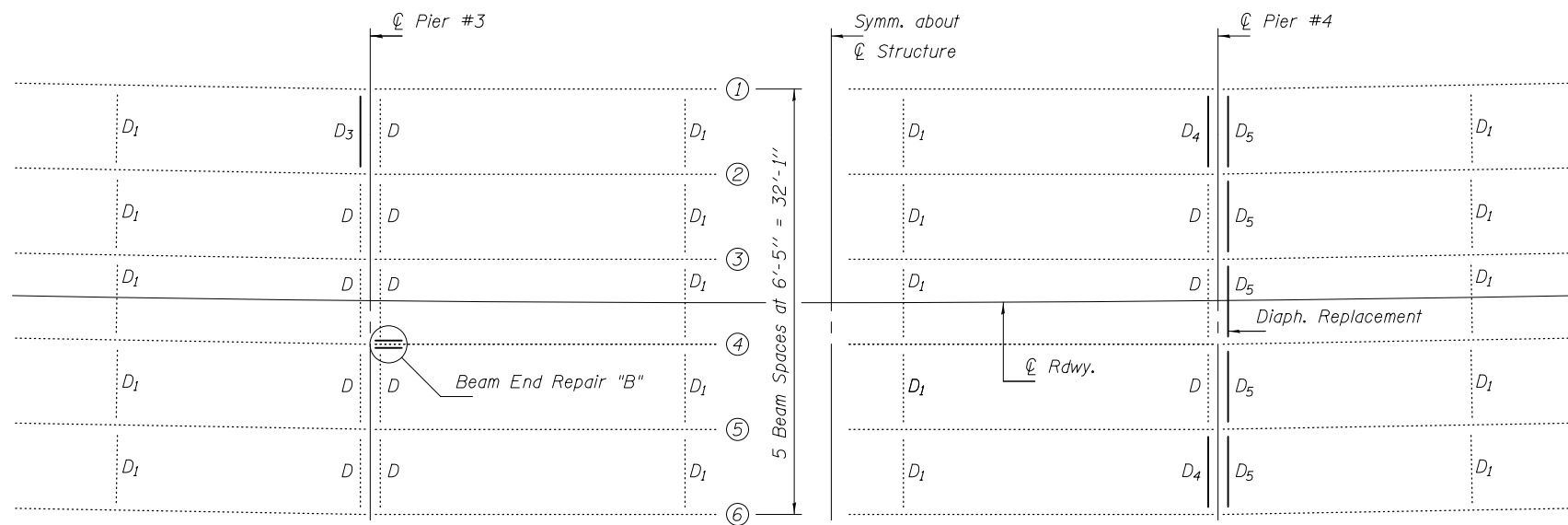
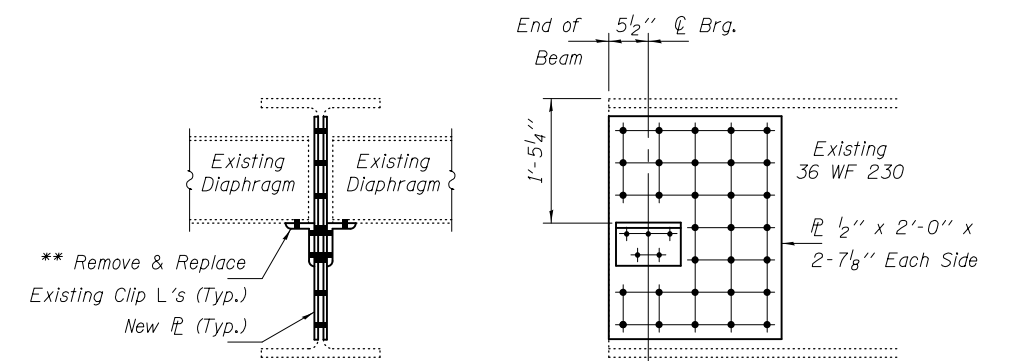


**PLAN STRUCTURAL STEEL REPAIR
SOUTH BOUND LANES SN 025-0072**

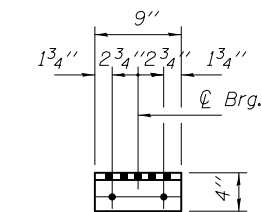


**PLAN STRUCTURAL STEEL REPAIR
NORTH BOUND LANES SN 025-0071**

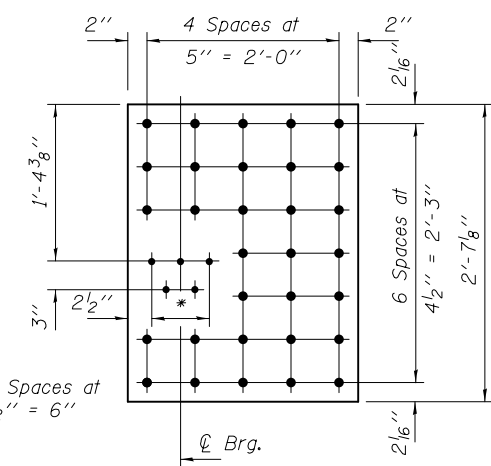


END VIEW

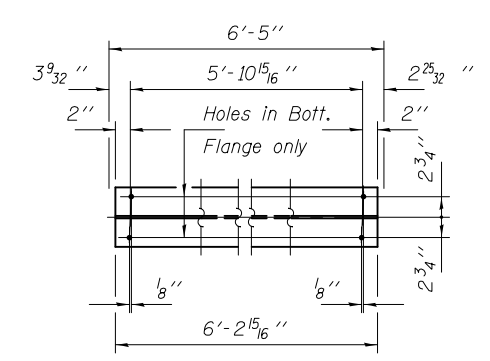
BEAM END REPAIR "B"



CLIP ANGLE "B"
(No. Req'd. = 2)



REPAIR PLATE "B"
(No. Req'd. = 2)

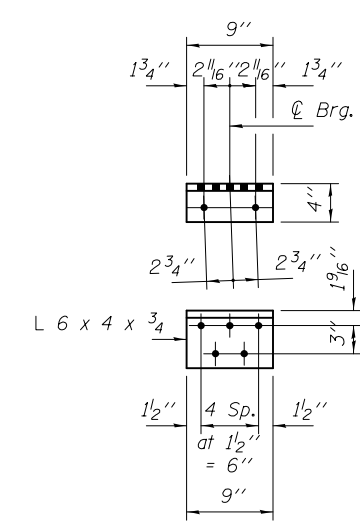


DIAPHRAGM D2
(No. Req'd. = 1)

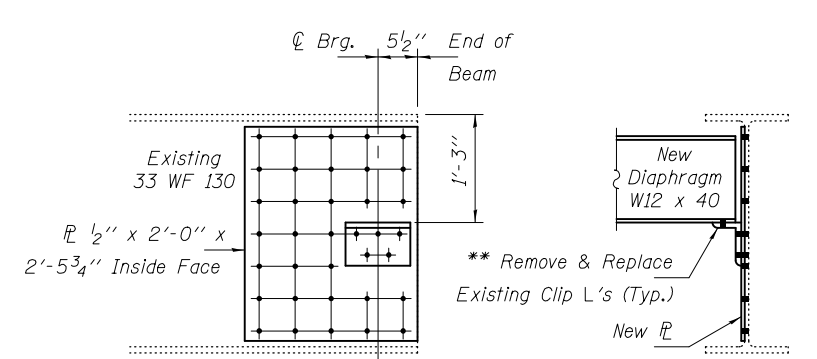
Notes:
Field drill holes in new diaphragms using existing clip L's as template.
(Strengthening Web Plates not shown)

DIMENSION "L"

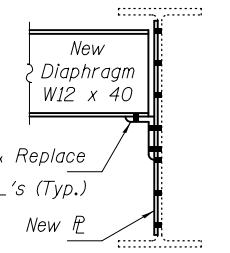
Diaph.	"L"	No. Req'd.
D3	6'-3 7/16"	1
D4	6'-3 7/16"	6
D5	6'-3 1/4"	8



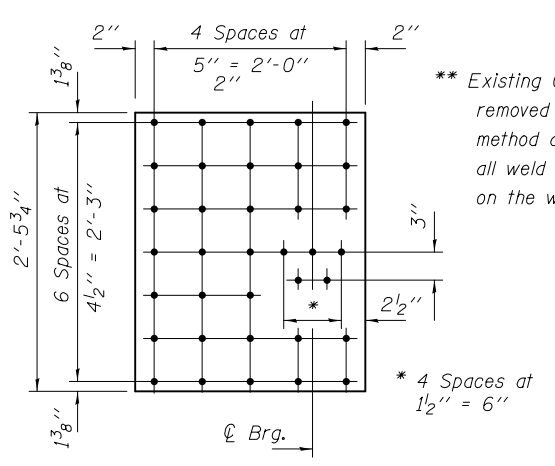
CLIP ANGLE "A"
(No. Req'd. = 1)



BEAM END REPAIR "A"
Cost included with Structural Steel Repair.

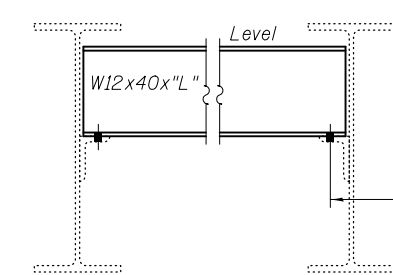


END VIEW



REPAIR PLATE "A"
(No. Req'd. = 1)

** Existing Clip Angles to be removed using the air-arc method and grind smooth all weld material remaining on the web.



DIAPHRAGM REPLACEMENT DETAIL

Using existing holes in existing clip angles as template, field drill holes in New Diaphragms at locations where strengthening R's are not used.