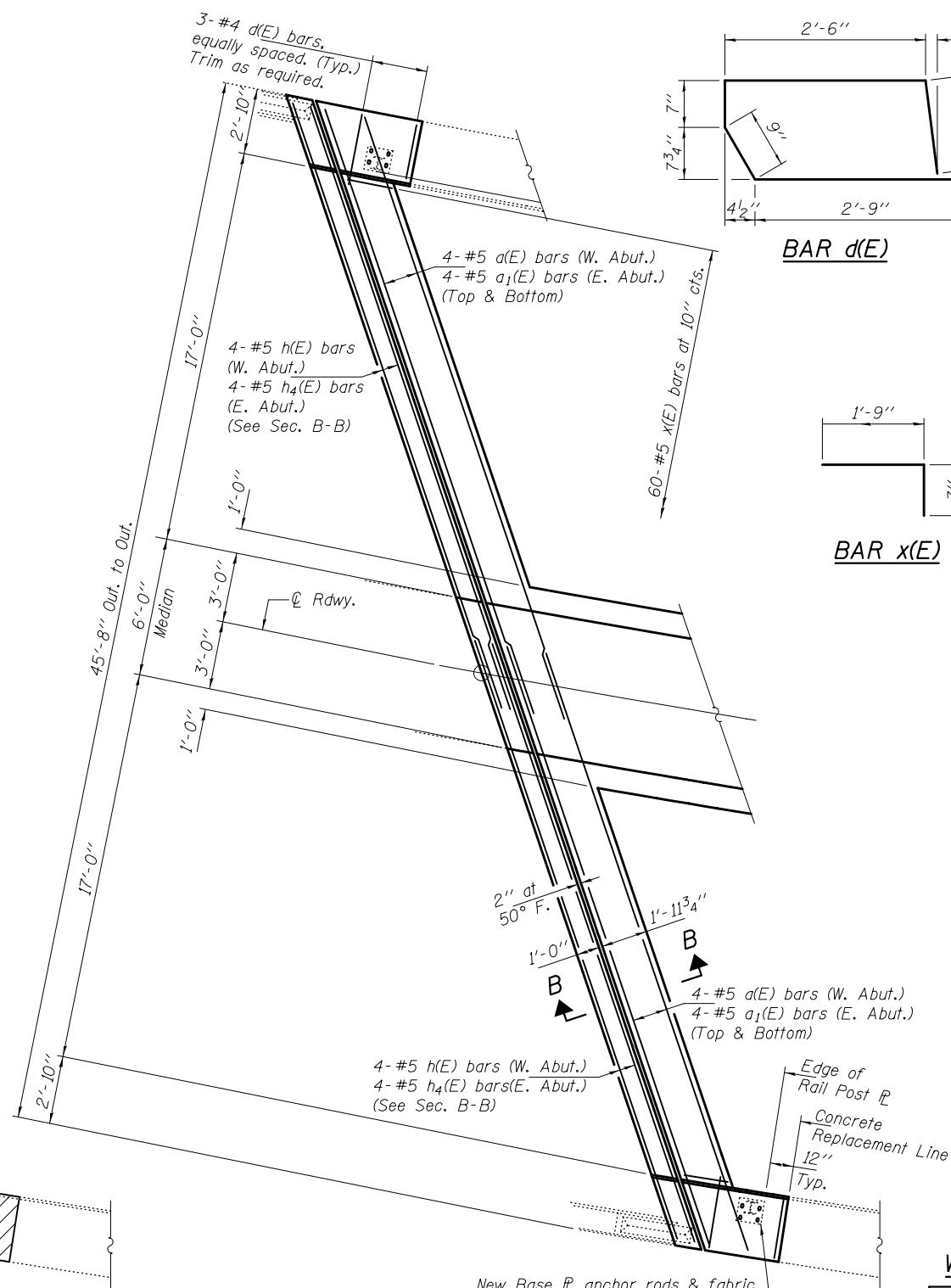


CONCRETE REMOVAL AT ABUTMENTS

Dimensions measured perpendicular to ϕ Roadway.
(W. Abut. shown, E. Abut. similar by 180° rotation)

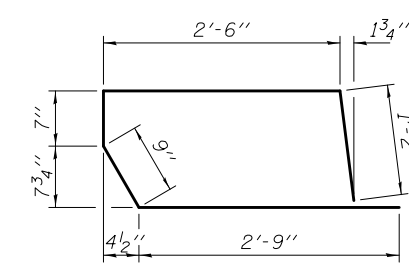
Existing permanent protective shield under ϕ of structure to be removed and disposed of. Cost included with Concrete Removal.



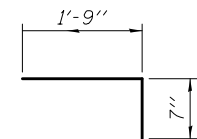
CONCRETE REPLACEMENT AT ABUTMENTS

Dimensions measured perpendicular to ϕ Roadway.
(W. Abut. shown, E. Abut. similar by 180° rotation)

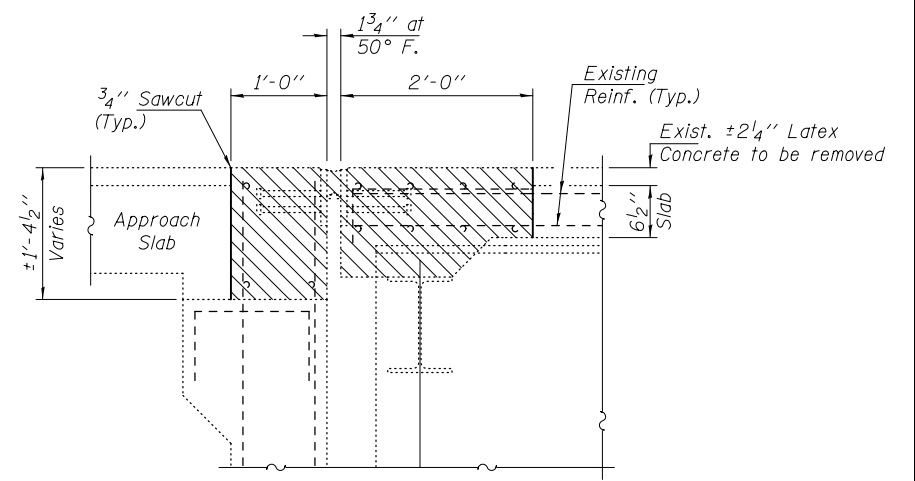
New Base ϕ anchor rods & fabric pad. Typ. See sheet 7 of 20.



BAR d(E)

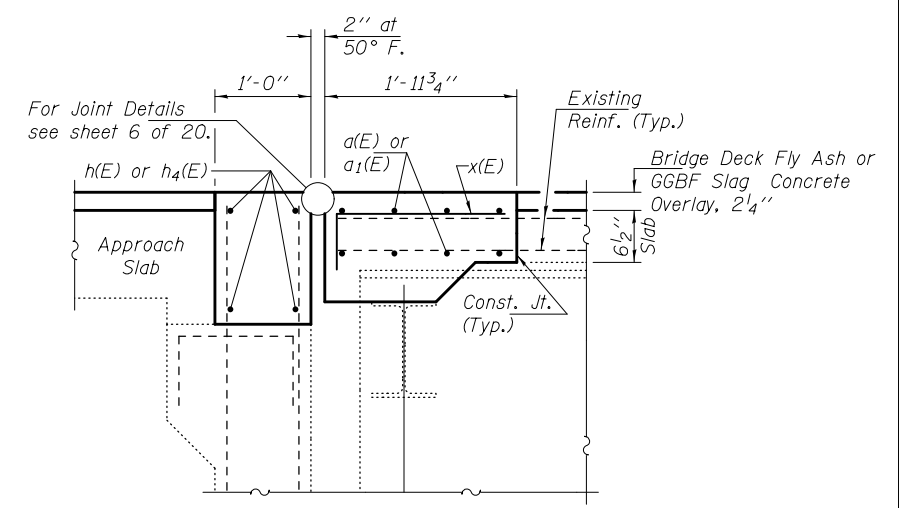


BAR x(E)



SECTION A-A

Dims. at Rt. L to Abutments



SECTION B-B

Dims. at Rt. L to Abutments

Note:
Hatched areas indicate Concrete Removal.
For Median & Curb reinforcement and details see sheet 7 of 20.

MIN. BAR LAP

#5 Bars = 2'-7"

W. ABUT. BILL OF MATERIAL

Bar	No.	Size	Length	Shape
a(E)	16	#5	27'-6"	—
d(E)	6	#4	7'-9"	□
h(E)	8	#5	27'-6"	—
x(E)	60	#5	2'-4"	┌
Concrete Removal			Cu. Yd.	7.0
Concrete Superstructure			Cu. Yd.	7.0
Reinforcement Bars, Epoxy Coated			Pounds	870

E. ABUT. BILL OF MATERIAL

Bar	No.	Size	Length	Shape
a1(E)	16	#5	24'-8"	—
d(E)	6	#4	7'-9"	□
h4(E)	8	#5	24'-8"	—
x(E)	60	#5	2'-4"	┌
Concrete Removal			Cu. Yd.	6.0
Concrete Superstructure			Cu. Yd.	6.0
Reinforcement Bars, Epoxy Coated			Pounds	800

DESIGNED TLC	EXAMINED <i>Timothy A. [Signature]</i>	DATE OCTOBER 16, 2014
CHECKED ATH	PASSED <i>[Signature]</i>	REVISIONS
DRAWN Steffen/baliva	ACTING ENGINEER OF BRIDGES AND STRUCTURES	
CHECKED TLC ATH		

**STATE OF ILLINOIS
DEPARTMENT OF TRANSPORTATION**

**JOINT REMOVAL & REPLACEMENT AT ABUTMENTS
SN 025-0042**

SHEET NO. 3 OF 20 SHEETS

F.A.I. RTE.	SECTION	COUNTY	TOTAL SHEETS	SHEET NO.
57	(25-6,7RS-2	EFFINGHAM	63	52
ILLINOIS FED. AID PROJECT			CONTRACT NO. 74638	