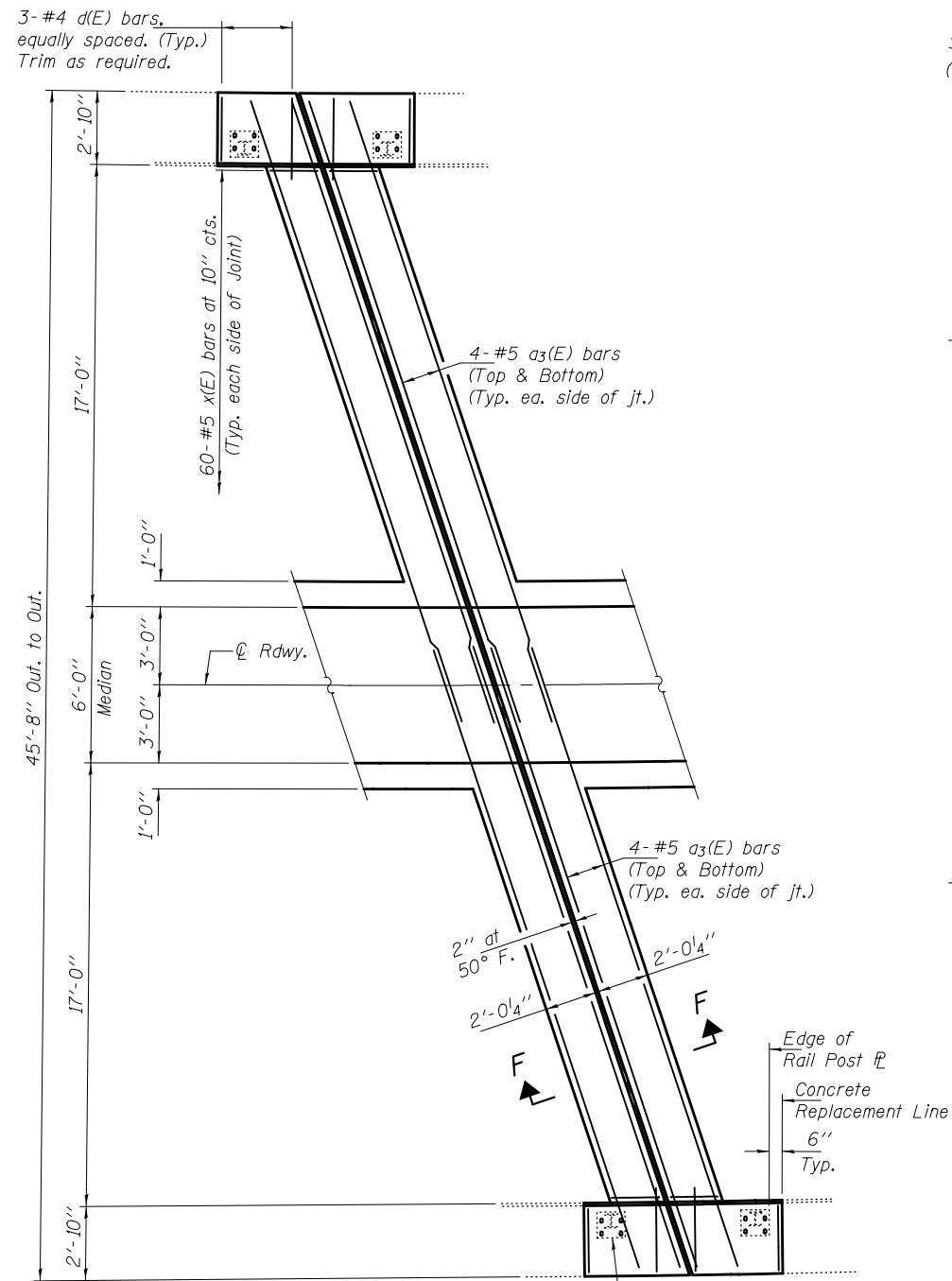


CONCRETE REMOVAL AT PIER 2

Dimensions measured perpendicular to \varnothing Roadway.

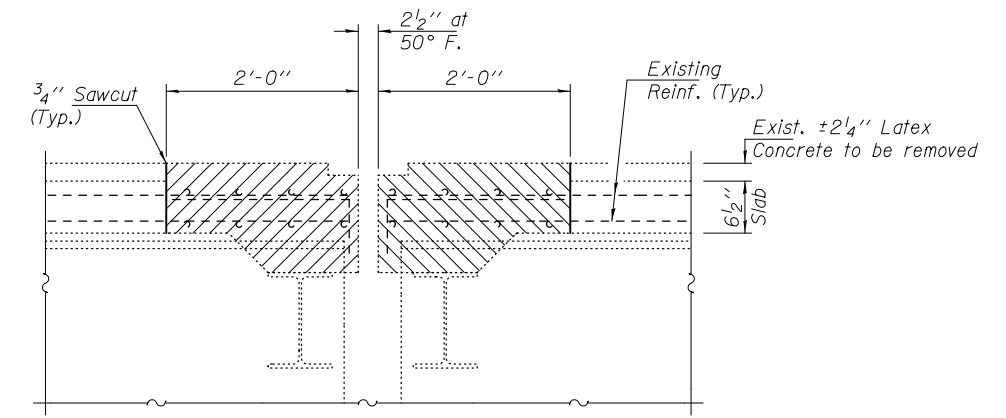
Note:
Hatched areas indicate Concrete Removal.
For Median & Curb reinforcement and details
see sheet 7 of 20.



CONCRETE REPLACEMENT AT PIER 2

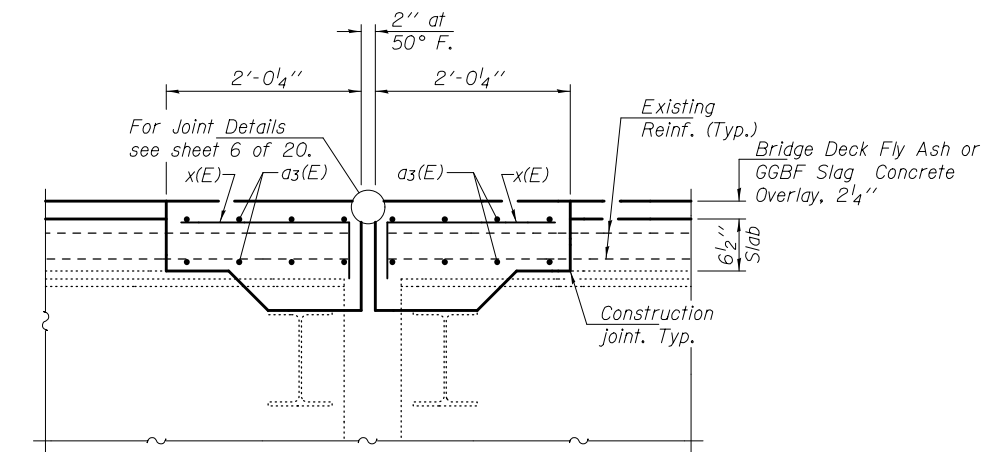
Dimensions measured perpendicular to \varnothing Roadway.

New Base \varnothing anchor rods & fabric pad. Typ. See sheet 7 of 20.



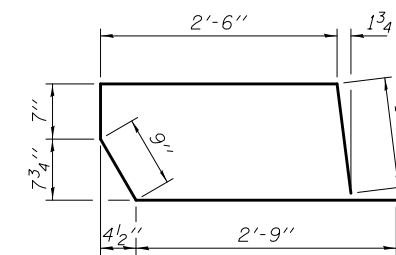
SECTION E-E

Dims. at Rt. L to Abutments

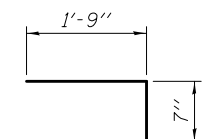


SECTION F-F

Dims. at Rt. L to Abutments



BAR d(E)



BAR x(E)

BILL OF MATERIAL

Bar	No.	Size	Length	Shape
a3(E)	32	#5	25'-6"	—
d(E)	12	#4	7'-9"	⌞
x(E)	120	#5	2'-4"	⌞
Concrete Removal			Cu. Yd.	7.4
Concrete Superstructure			Cu. Yd.	7.4
Reinforcement Bars, Epoxy Coated			Pounds	1210

MIN. BAR LAP

#5 Bars = 2'-7"

DESIGNED TLC	EXAMINED <i>Timothy A. [Signature]</i>	DATE OCTOBER 16, 2014
CHECKED ATH	PASSED <i>[Signature]</i>	REVISED
DRAWN Steffen/baliva	ACTING ENGINEER OF BRIDGES AND STRUCTURES	REVISED
CHECKED TLC ATH	ACTING ENGINEER OF STRUCTURAL SERVICES	

**STATE OF ILLINOIS
DEPARTMENT OF TRANSPORTATION**

**JOINT REMOVAL & REPLACEMENT AT PIER 2
SN 025-0042**

SHEET NO. 5 OF 20 SHEETS

F.A.I. RTE.	SECTION	COUNTY	TOTAL SHEETS	SHEET NO.
57	(25-6,7)RS-2	EFFINGHAM	63	54
ILLINOIS FED. AID PROJECT			CONTRACT NO. 74638	