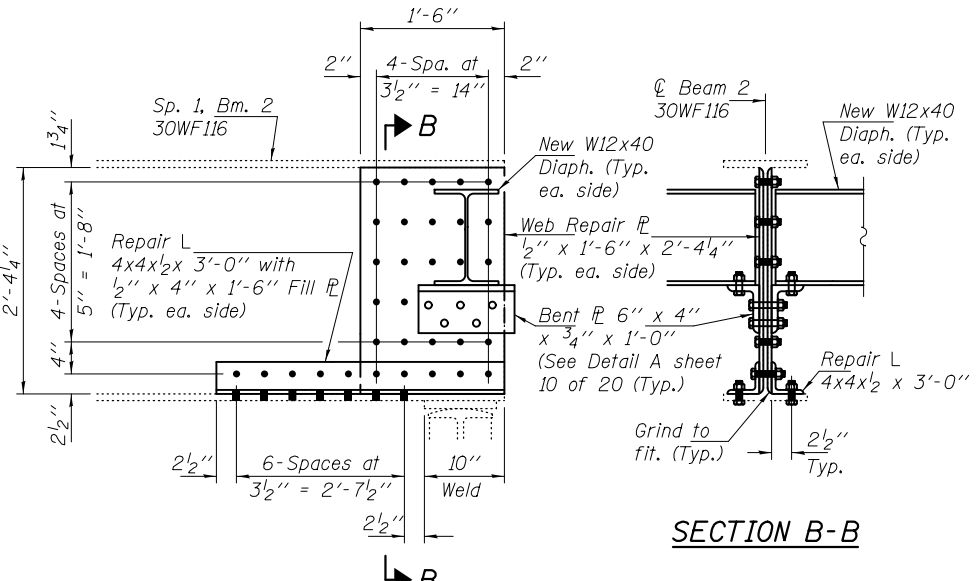
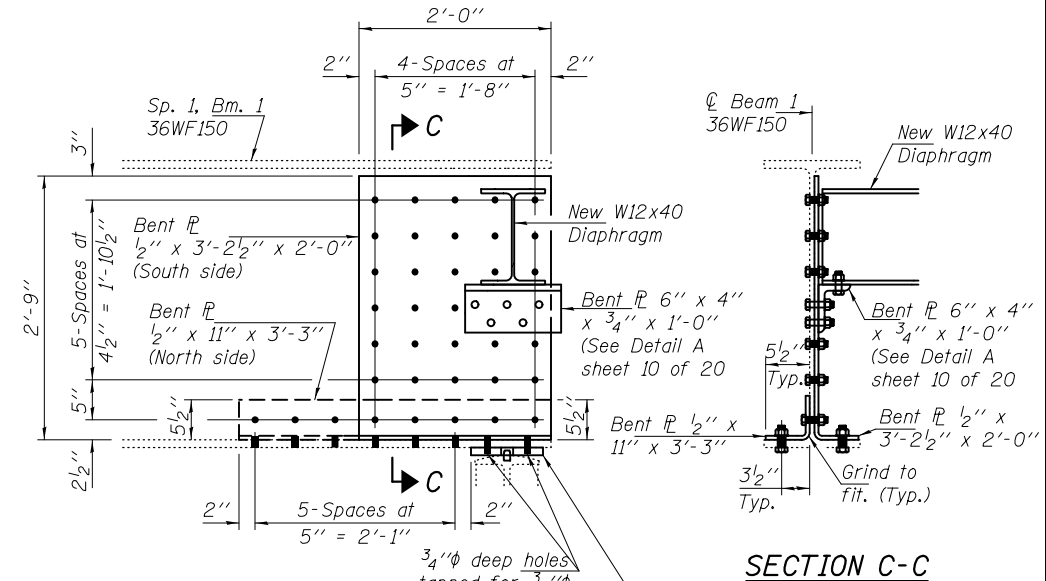


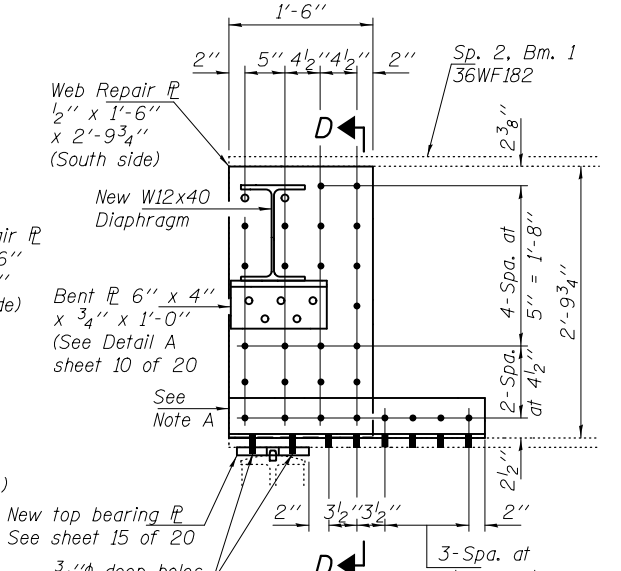
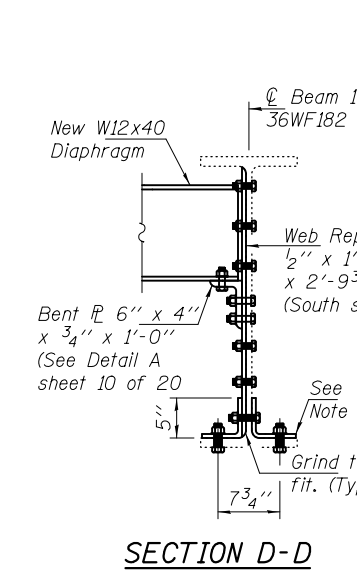
**REPAIR DETAIL 4**  
(Looking North)



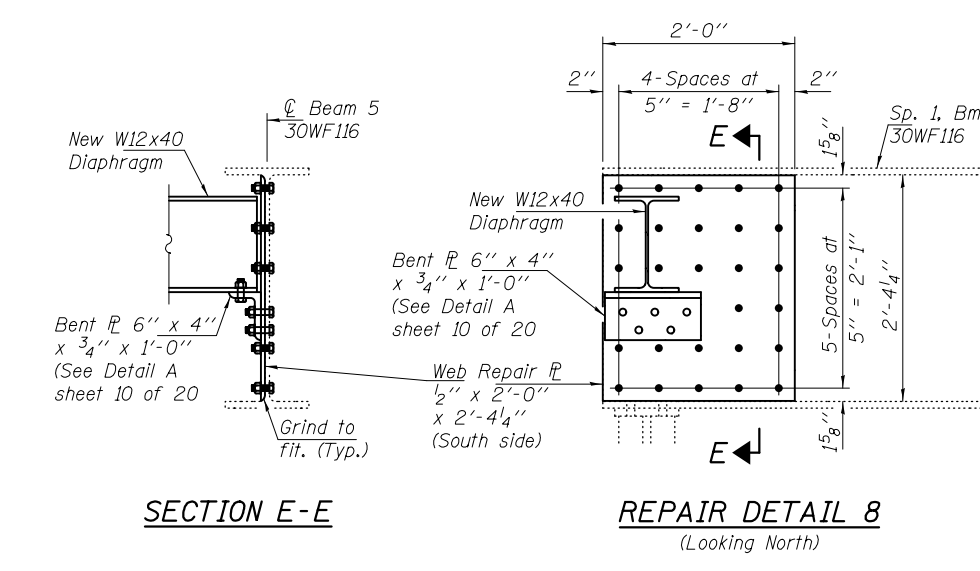
**REPAIR DETAIL 5**  
(Looking North)



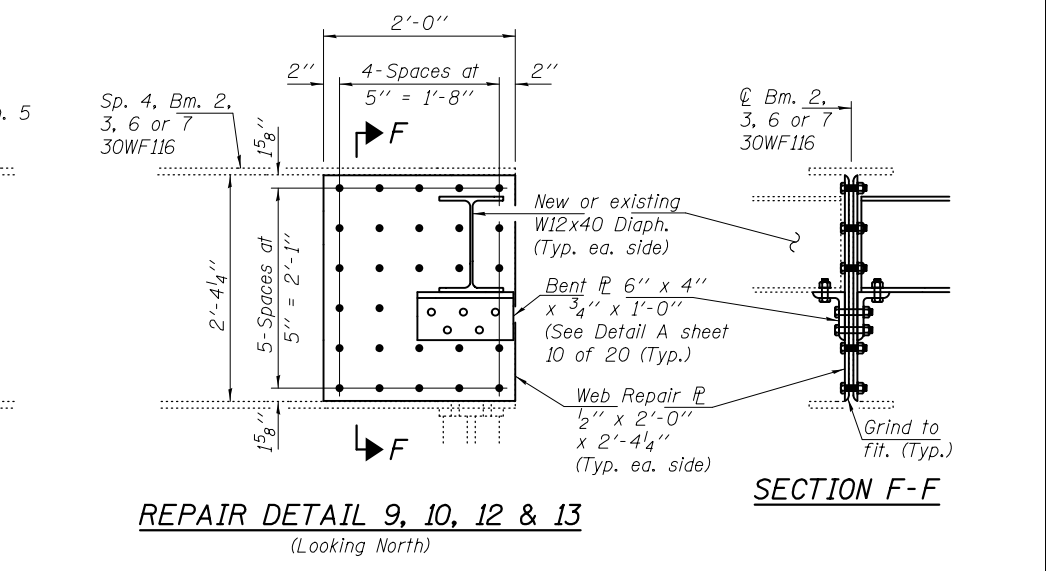
**REPAIR DETAIL 6**  
(Looking North)



**REPAIR DETAIL 7**  
(Looking North)



**REPAIR DETAIL 8**  
(Looking North)

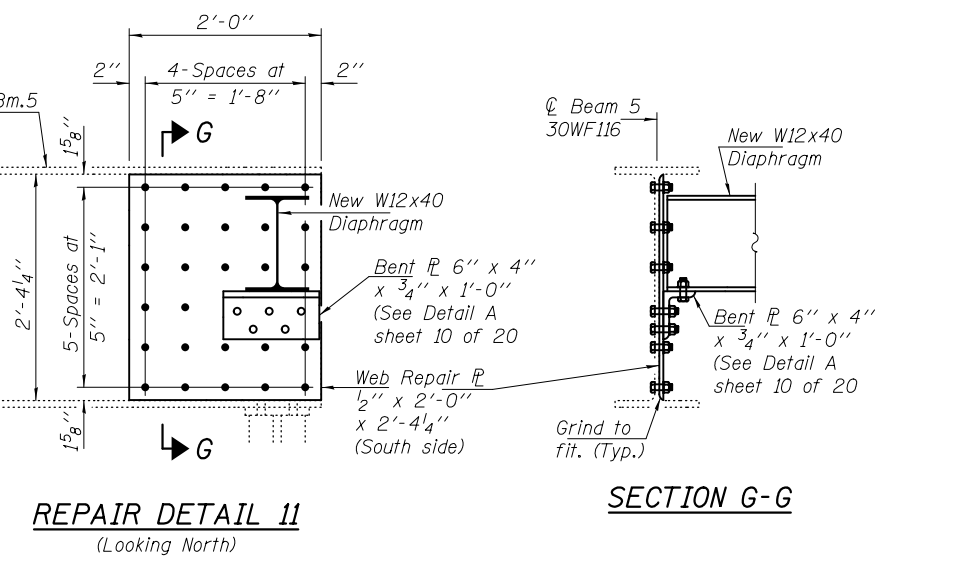
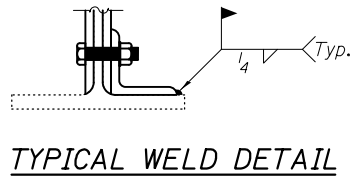


**REPAIR DETAIL 9, 10, 12 & 13**  
(Looking North)

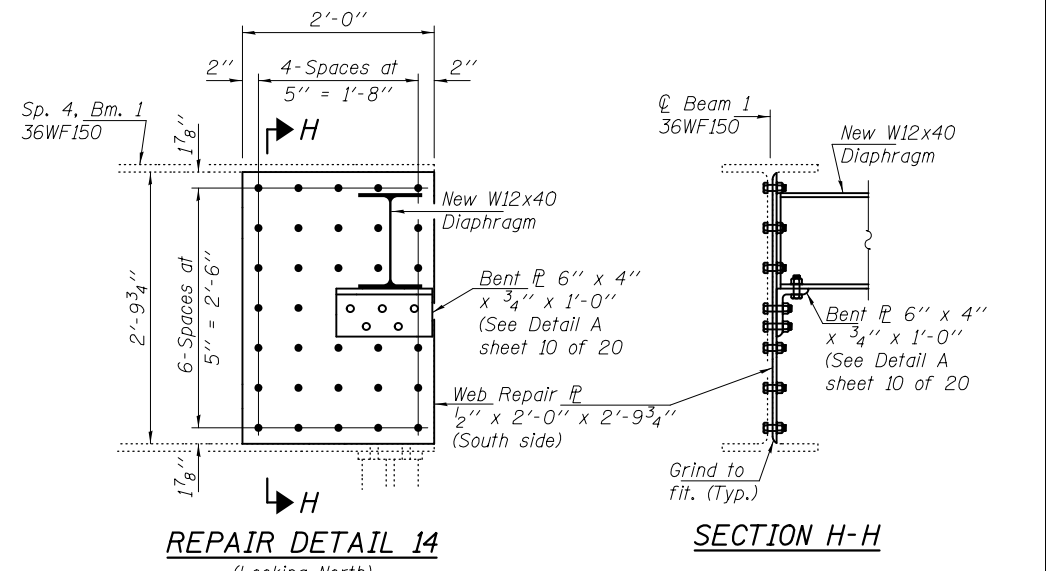
Note A:  
 Bent PL 1/2" x 10 1/2" x 2'-8" (North side)  
 L5x5x1/2 x 2'-8" with Fill PL 1/2" x 5" x 1'-2" (South side)

**BOLT HOLE LEGEND**

- - Holes to be shop drilled.
- - Holes to be field drilled.



**REPAIR DETAIL 11**  
(Looking North)



**REPAIR DETAIL 14**  
(Looking North)

DESIGNED TLC	EXAMINED <i>Timothy A. ...</i>	DATE OCTOBER 16, 2014	<b>STATE OF ILLINOIS DEPARTMENT OF TRANSPORTATION</b>	<b>BEAM END REPAIRS SN 025-0042</b>	F.A.I. RTE. 57	SECTION (25-6,7RS-2)	COUNTY EFFINGHAM	TOTAL SHEETS 63	SHEET NO. 58	
CHECKED ATH	PASSED <i>...</i>	REVISED			CONTRACT NO. 74638					
DRAWN Steffen	ACTING ENGINEER OF BRIDGES AND STRUCTURES	REVISED			ILLINOIS FED. AID PROJECT					
CHECKED TLC ATH					SHEET NO. 9 OF 20 SHEETS					