

STATE OF ILLINOIS  
 DEPARTMENT OF TRANSPORTATION  
 DIVISION OF HIGHWAYS

**PROPOSED  
 HIGHWAY PLANS**

F.A.I. 57 (I-57)  
 SECTION D7 BRIDGE REPAIRS 2015-1

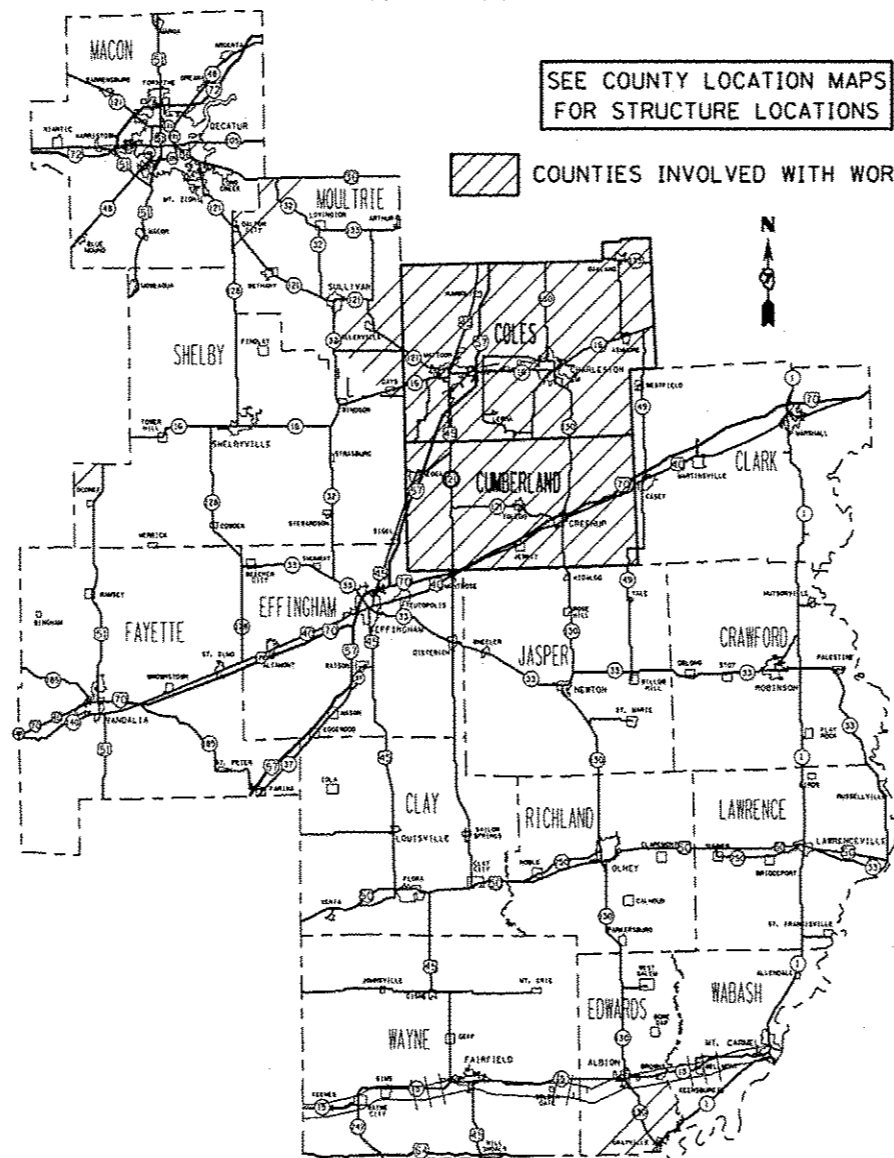
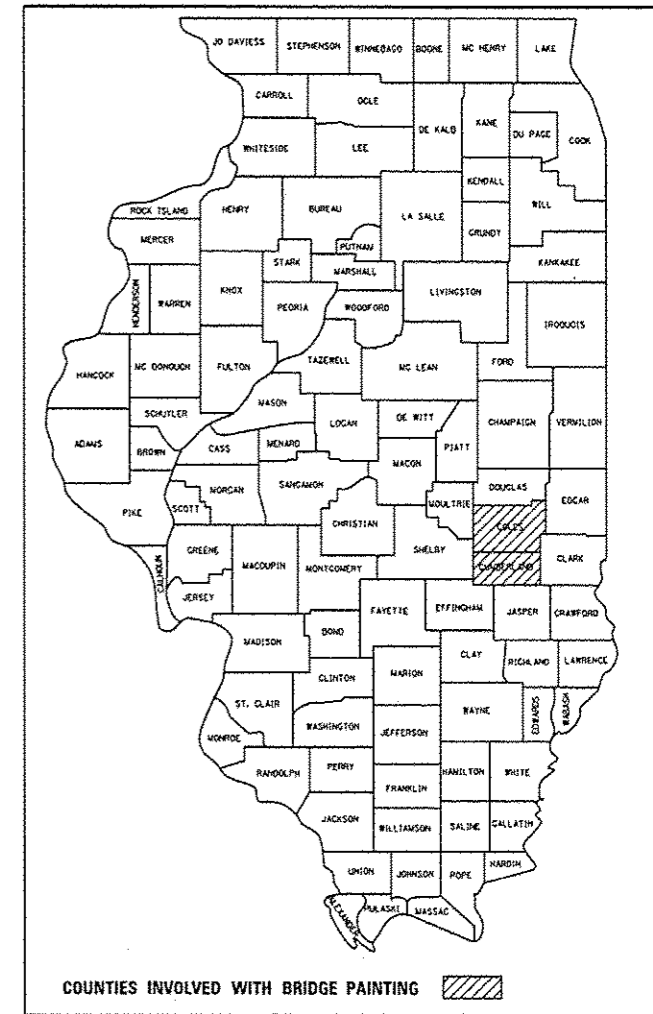
BRIDGE REPAIR  
 COLES AND CUMBERLAND COUNTIES  
 C-97-083-14

FOR INDEX OF SHEETS, SEE SHEET NO. 2

F.A.I. RTE.	SECTION	COUNTY	TOTAL SHEETS	SHEET NO.
57	D7 BRIDGE REPAIRS 2015-1	ILLINOIS	8	1
CONTRACT NO. 74677				

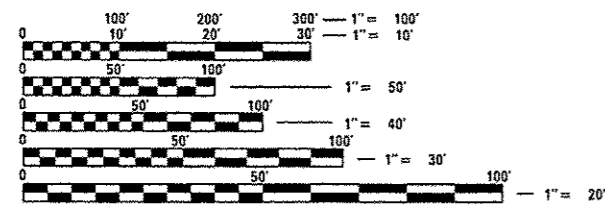
• COLES, CUMBERLAND

D-97-037-14



SEE COUNTY LOCATION MAPS  
 FOR STRUCTURE LOCATIONS

COUNTIES INVOLVED WITH WORK



FULL SIZE PLANS HAVE BEEN PREPARED USING STANDARD ENGINEERING SCALES. REDUCED SIZED PLANS WILL NOT CONFORM TO STANDARD SCALES. IN MAKING MEASUREMENTS ON REDUCED PLANS, THE ABOVE SCALES MAY BE USED.

J.U.L.I.E.  
 JOINT UTILITY LOCATION INFORMATION FOR EXCAVATION  
 1-800-892-0123  
 OR 811

PROJECT ENGINEER: TOM RONAN  
 PROJECT MANAGER: TOM RONAN  
 PHONE: (217)-342-8320  
 CONTRACT NO. 74677

STATE OF ILLINOIS  
 DEPARTMENT OF TRANSPORTATION  
 DIVISION OF HIGHWAYS

SUBMITTED July 30 2014  
Rose L. Doshell  
 DEPUTY DIRECTOR OF HIGHWAYS, REGION ENGINEER

Oct 17 2014  
John D. Baranzelli P.E.  
 ENGINEER OF DESIGN AND ENVIRONMENT

Oct 17 2014  
Omer Osman P.E.  
 DIRECTOR OF HIGHWAYS, CHIEF ENGINEER

PRINTED BY THE AUTHORITY  
 OF THE STATE OF ILLINOIS