

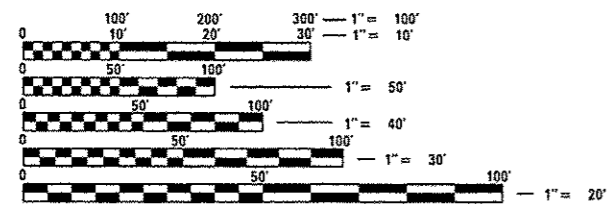
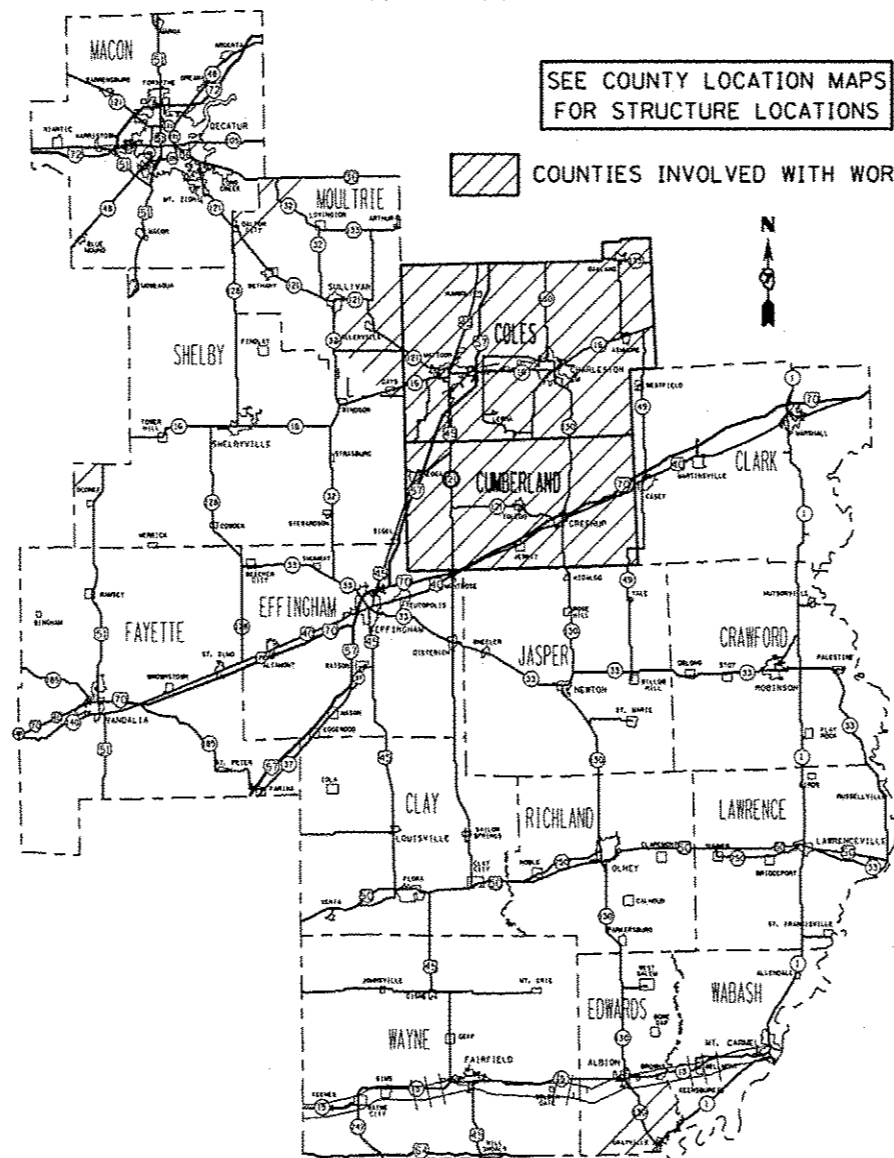
STATE OF ILLINOIS
DEPARTMENT OF TRANSPORTATION
DIVISION OF HIGHWAYS

**PROPOSED
HIGHWAY PLANS**

F.A.I. 57 (I-57)
SECTION D7 BRIDGE REPAIRS 2015-1

BRIDGE REPAIR
COLES AND CUMBERLAND COUNTIES
C-97-083-14

FOR INDEX OF SHEETS, SEE SHEET NO. 2



FULL SIZE PLANS HAVE BEEN PREPARED USING STANDARD ENGINEERING SCALES. REDUCED SIZED PLANS WILL NOT CONFORM TO STANDARD SCALES. IN MAKING MEASUREMENTS ON REDUCED PLANS, THE ABOVE SCALES MAY BE USED.

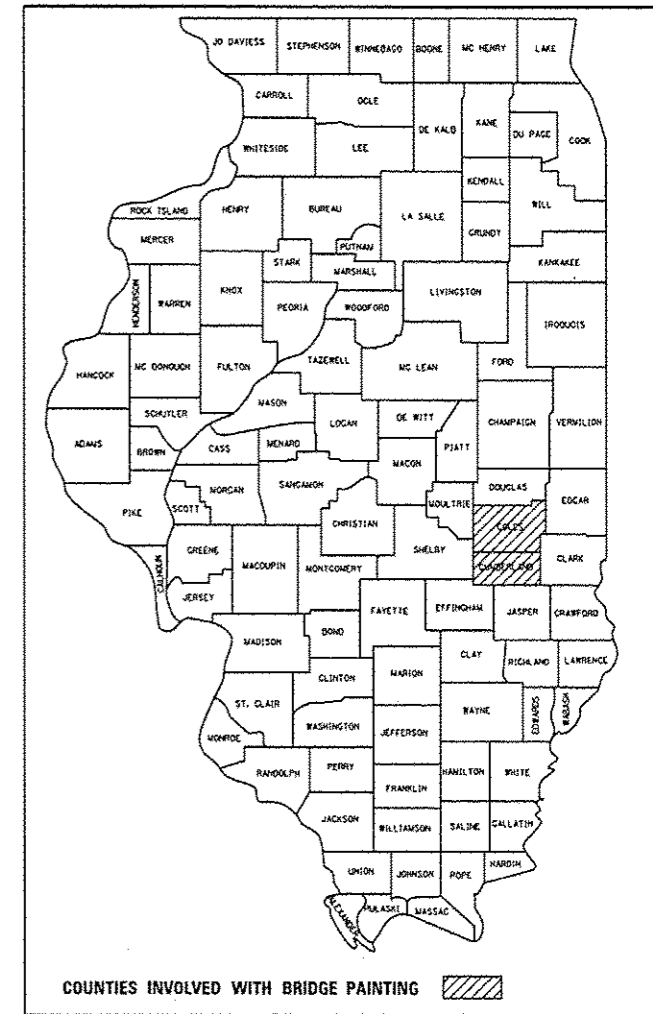
J.U.L.I.E.
JOINT UTILITY LOCATION INFORMATION FOR EXCAVATION
1-800-892-0123
OR 811

PROJECT ENGINEER: TOM RONAN
PROJECT MANAGER: TOM RONAN
PHONE: (217)-342-8320
CONTRACT NO. 74677

F.A.I. RTE.	SECTION	COUNTY	TOTAL SHEETS	SHEET NO.
57	D7 BRIDGE REPAIRS 2015-1	ILLINOIS	8	1
CONTRACT NO. 74677				

• COLES, CUMBERLAND

D-97-037-14



STATE OF ILLINOIS
DEPARTMENT OF TRANSPORTATION
DIVISION OF HIGHWAYS

SUBMITTED July 30 2014
Rose L. Doshell
DEPUTY DIRECTOR OF HIGHWAYS, REGION ENGINEER

Oct 17 2014
John D. Baranzelli P.E.
ENGINEER OF DESIGN AND ENVIRONMENT

Oct 17 2014
Omur Osman P.E.
DIRECTOR OF HIGHWAYS, CHIEF ENGINEER

PRINTED BY THE AUTHORITY
OF THE STATE OF ILLINOIS

100% STATE

100% STATE

SUMMARY OF QUANTITIES			TOTAL QUANTITIES	CONSTRUCTION TYPE CODE	
CODE NO	ITEM	UNIT		COLES COUNTY 0014	CUMBERLAND COUNTY 0014
40600275	BITUMINOUS MATERIALS (PRIME COAT)	POUND	3546	1897	1649
40603545	POLYMERIZED HOT-MIX ASPHALT SURFACE COURSE, MIX "D", N90	TON	1001	590	411
67100100	MOBILIZATION	L SUM	1	0.5	0.5
70100420	TRAFFIC CONTROL AND PROTECTION, STANDARD 701411	EACH	4	2	2
70100800	TRAFFIC CONTROL AND PROTECTION, STANDARD 701401	L SUM	1	0.5	0.5
70300100	SHORT TERM PAVEMENT MARKING	FOOT	328	167	161
70301000	WORK ZONE PAVEMENT MARKING REMOVAL	50 FT	108	55	53
* 78000200	THERMOPLASTIC PAVEMENT MARKING - LINE 4"	FOOT	3636	1852	1784
* 78000400	THERMOPLASTIC PAVEMENT MARKING - LINE 6"	FOOT	455	232	223
* 78100100	RAISED REFLECTIVE PAVEMENT MARKER	EACH	45	23	22
X4401198	HOT-MIX ASPHALT SURFACE REMOVAL, VARIABLE DEPTH	50 YD	7880	4215	3665
X7010410	SPEED DISPLAY TRAILER	CAL MO	3	1.5	1.5

SUMMARY OF QUANTITIES			TOTAL QUANTITIES	CONSTRUCTION TYPE CODE	
CODE NO	ITEM	UNIT		COLES COUNTY 0014	CUMBERLAND COUNTY 0014
X7015005	CHANGEABLE MESSAGE SIGN	CAL DA	28	14	14
* X7830070	GROOVING FOR RECESSED PAVEMENT MARKING 5"	FOOT	3636	1852	1784
* X7830074	GROOVING FOR RECESSED PAVEMENT MARKING 7"	FOOT	455	232	223
Z0005010	HOT-MIX ASPHALT FOR PATCHING POTHOLES (COLD MIX)	TON	2	1	1
Z0016200	DECK SLAB REPAIR (PARTIAL)	SQ YD	250	125	125

* SPECIALTY ITEM

* COLES, CUMBERLAND

FILE NAME =	USER NAME = atoffennk	DESIGNED -	REVISIONS -	STATE OF ILLINOIS DEPARTMENT OF TRANSPORTATION	SUMMARY OF QUANTITIES	F.A.I. RTE.	SECTION	COUNTY	TOTAL SHEETS	SHEET NO.	
c:\p\work\p\dot\atoffennk\08396917107	74677-ahs-aag.dgn	DRAWN -	REVISIONS -			57	07 BRIDGE REPAIRS 2015-1		8	3	
Default	PLOT SCALE = 100.0000 1/ in.	CHECKED -	REVISIONS -			SCALE: N/A SHEET 1 OF 1 SHEETS STA. TO STA.		CONTRACT NO. 74677			
	PLOT DATE = 8/4/2014	DATE -	REVISIONS -			ILLINOIS FED. AID PROJECT					

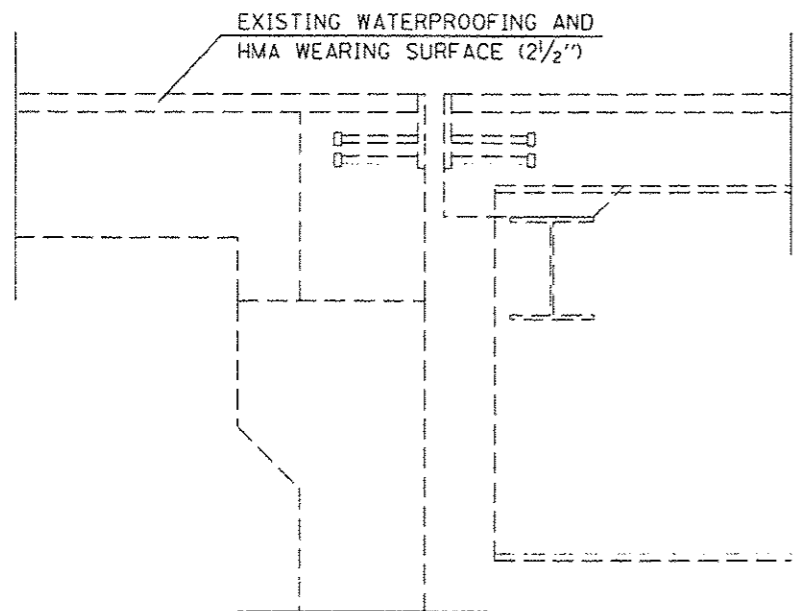
SCHEDULE OF QUANTITIES

STRUCTURE NUMBER	LOCATION	STRUCTURE LENGTH FEET	STRUCTURE WIDTH FEET	MILLING/PAVING LENGTH FEET	HOT-MIX ASPHALT SURFACE REMOVAL, VARIABLE DEPTH SO YD	BITUMINOUS MATERIALS (PRIME COAT) POUND	POLYMERIZED HOT-MIX ASPHALT SURFACE COURSE, MIX "D", N90 TON	THERMOPLASTIC PAVEMENT MARKING - LINE 6" FOOT	THERMOPLASTIC PAVEMENT MARKING - LINE 4" FOOT	GROOVING FOR RECESSED PAVEMENT MARKING 5" FOOT	GROOVING FOR RECESSED PAVEMENT MARKING 7" FOOT	SHORT-TERM PAVEMENT MARKING FOOT	WORK ZONE PAVEMENT MARKING REMOVAL SO FT	RAISED REFLECTIVE PAVEMENT MARKER EACH
COLES COUNTY														
SN 015-0003	I-57 (SB)	209	33	217	796	358	89	54	434	434	54	39	13	5
SN 015-0004	I-57 (NB)	209	33	217	796	358	89	54	434	434	54	39	13	5
SN 015-0005	I-57 (NB)	238	48	246	1312	590	147	62	492	492	62	44	15	6
SN 015-0006	I-57 (SB)	238	48	246	1312	590	147	62	492	492	62	44	15	6
COLES COUNTY TOTALS					4215	1897	472	232	1852	1852	232	167	55	23
CUMBERLAND COUNTY														
018-0001	I-57 (SB)	292	36	300	1200	540	101	75	600	600	75	54	18	8
018-0002	I-57 (NB)	292	36	300	1200	540	101	75	600	600	75	54	18	8
018-0003	I-57 (SB)	138	39	146	633	285	53	37	292	292	37	26	9	4
018-0004	I-57 (NB)	138	39	146	633	285	53	37	292	292	37	26	9	4
CUMBERLAND CO. TOTALS					3665	1649	308	223	1784	1784	223	161	53	22
PROJECT TOTALS					7881	3546	780	455	3636	3636	455	327	108	45

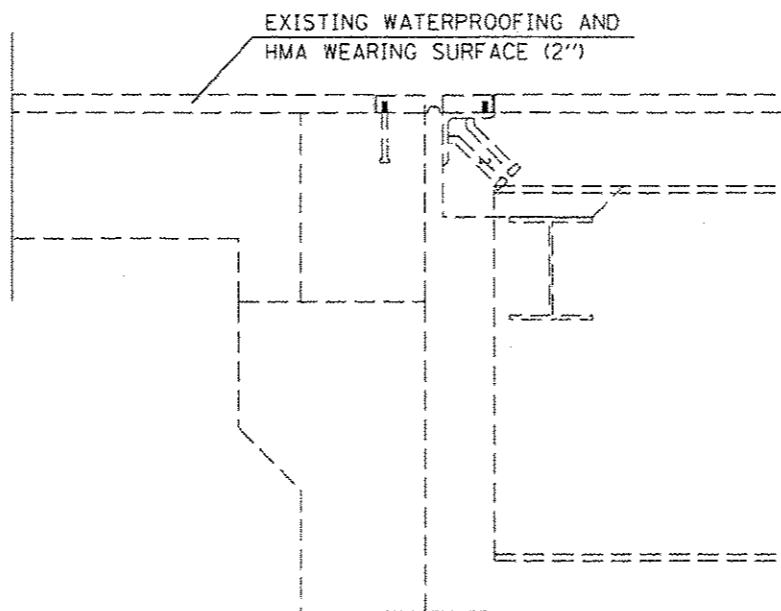
• COLES, CUMBERLAND

FILE NAME -	USER NAME -	DESIGNED -	REVISED -	STATE OF ILLINOIS DEPARTMENT OF TRANSPORTATION	SCHEDULE OF QUANTITIES	F.A.I. RTE.	SECTION	COUNTY	TOTAL SHEETS	SHEET NO.		
c:\pvc\work\101\dot\1\work\101\dot\1\74677	4677-akt-sch.dgn	DRAWN -	REVISED -			57	D7 BRIDGE REPAIRS 2015-1		8	4		
Default	PLOT SCALE - 1/8"=1'-0"	CHECKED -	REVISED -			SCALE: N/A		SHEET 1	OF 1	SHEETS	STA.	TQ STA.
	PLOT DATE - 10/3/2014	DATE -	REVISED -			CONTRACT NO. 74677 ILLINOIS FED. AID PROJECT						

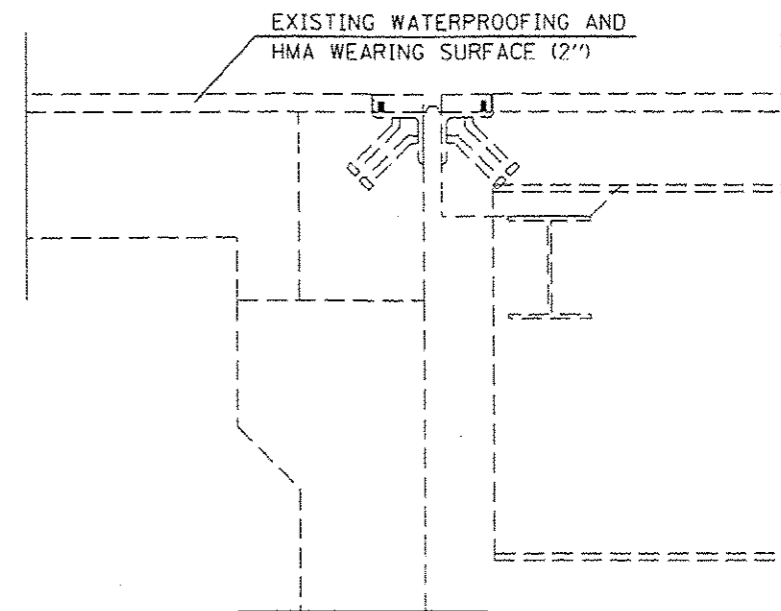
EXISTING



015-0003
015-0004
015-0005
015-0006

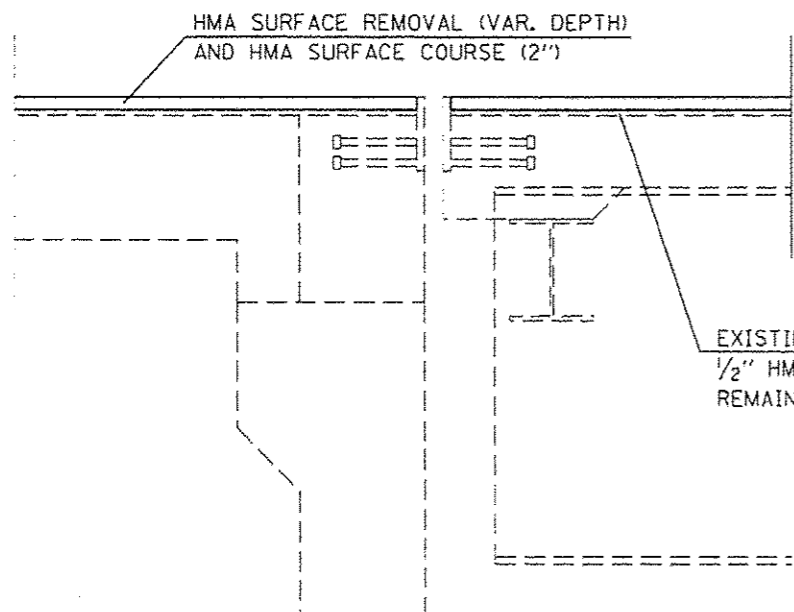


018-0001
018-0002

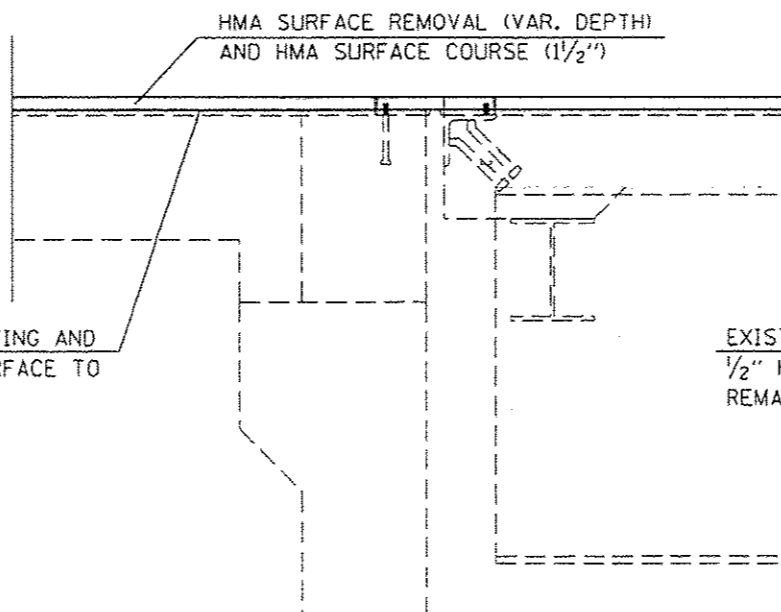


018-0003
018-0004

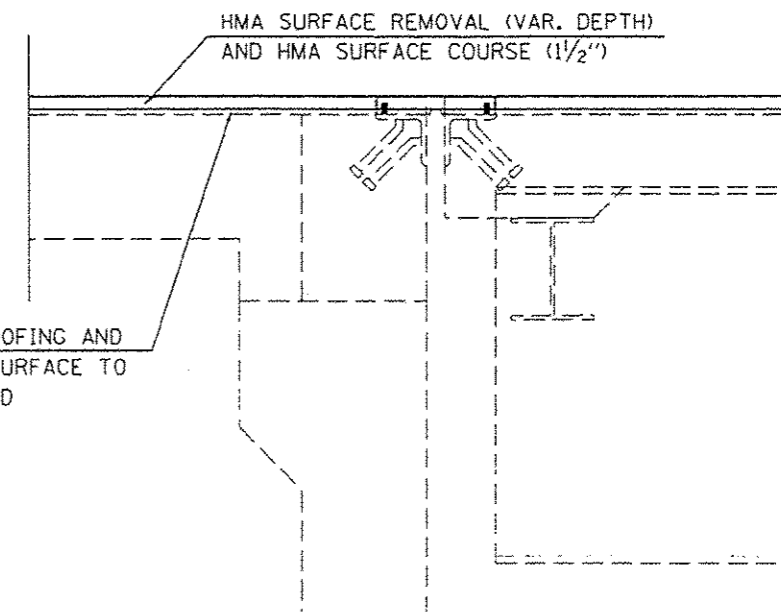
PROPOSED



015-0003
015-0004
015-0005
015-0006



018-0001
018-0002

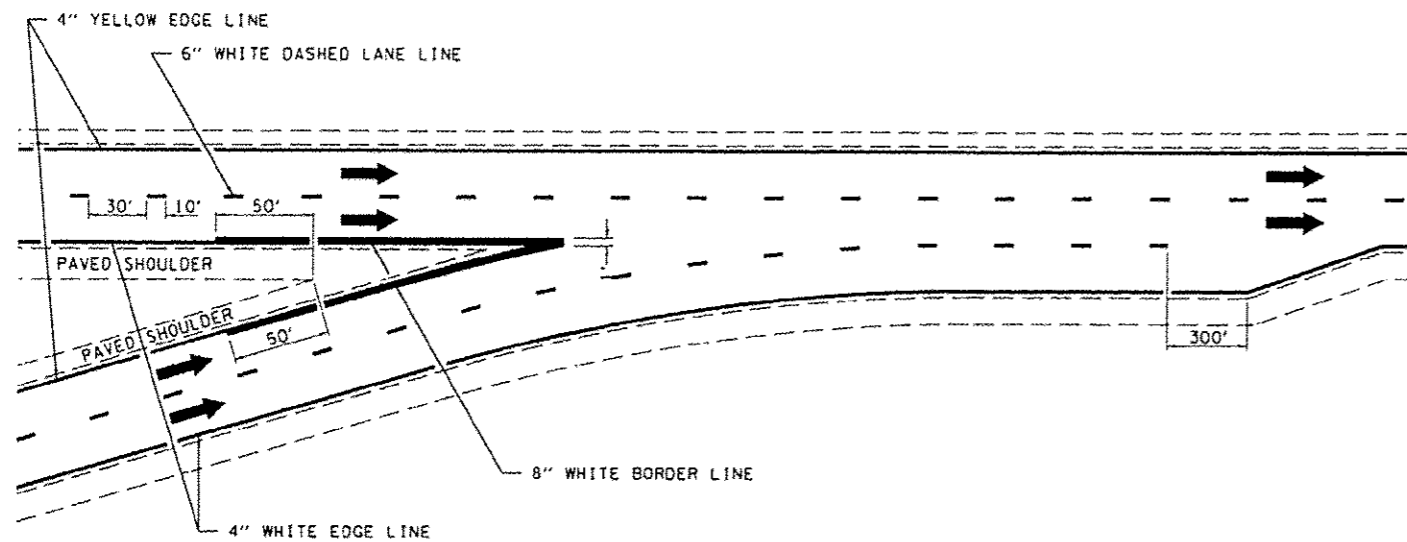


018-0003
018-0004

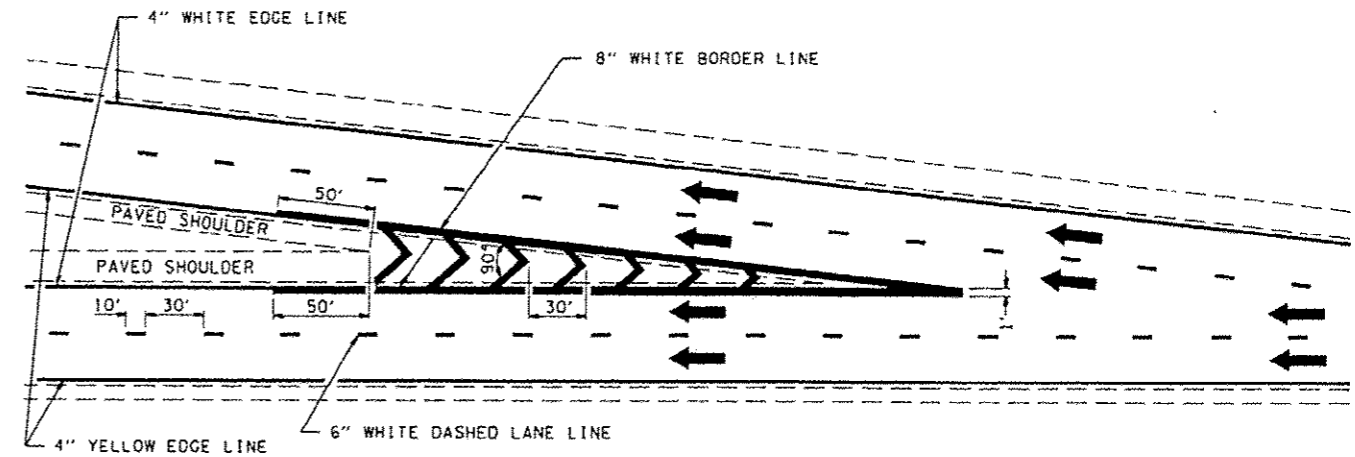
CONTRACTOR MUST ENSURE THAT NO DAMAGE IS DONE
TO THE EXISTING JOINTS DURING REMOVAL OPERATIONS.
ANY DAMAGE IS TO BE REPAIRED AT THE CONTRACTOR'S
EXPENSE TO THE SATISFACTION OF THE ENGINEER.

COLES, CUMBERLAND

FILE NAME *	USER NAME * user-srw	DESIGNED -	REVISED -	STATE OF ILLINOIS DEPARTMENT OF TRANSPORTATION	MILLING / RESURFACING DETAILS EXPANSION JOINTS	F.A.I. RTE.	SECTION	COUNTY	TOTAL SHEETS	SHEET NO.	
ct:\pwwork\work\det\1507\1507-1\0774677-shc-revdetails.dgn		DRAWN -	REVISED -			57	07 BRIDGE REPAIRS 2015-1	*	8	5	
PLOT SCALE * 1/8" = 1'-0"		CHECKED -	REVISED -			CONTRACT NO. 74677					
Default	PLOT DATE * 10/3/2014	DATE -	REVISED -			ILLINOIS FED. AID PROJECT					

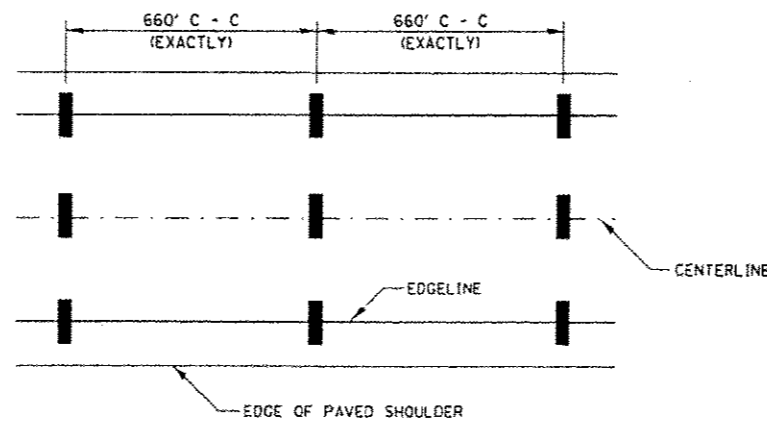


TYPICAL CONVERGENCE MARKING

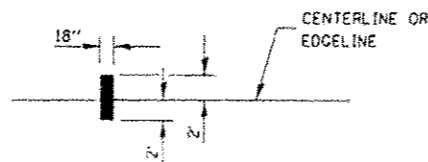


TYPICAL DIVERGENCE MARKING

AERIAL SPEED CHECK ZONES



IT WILL BE NECESSARY TO HAVE A REPRESENTATIVE OF THE STATE POLICE PRESENT SO THAT THE ACCURACY OF MEASUREMENT CAN BE ATTESTED TO IN COURT.



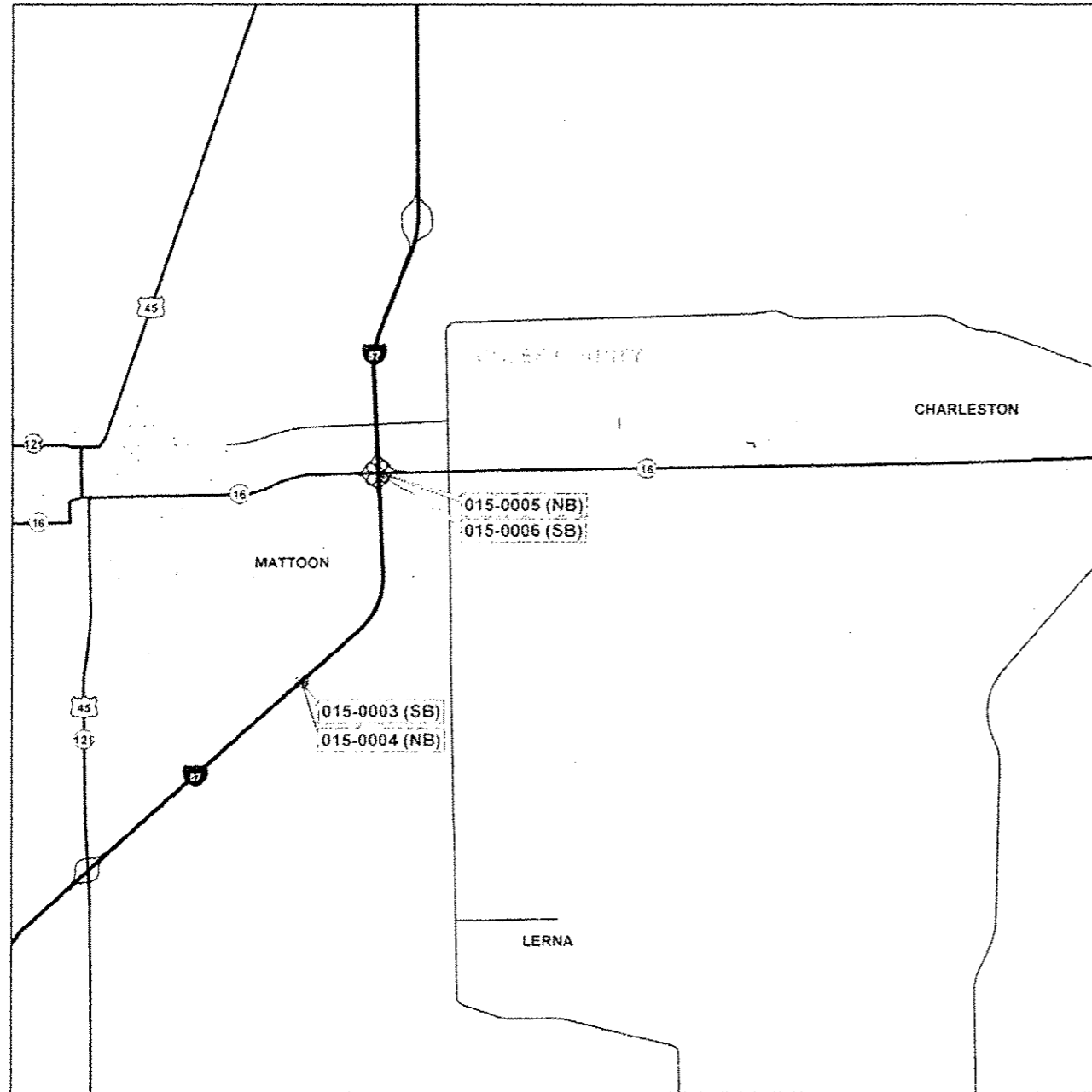
NOT TO SCALE
• COLES, CUMBERLAND

DISTRICT 7 DETAIL NO. 78000002

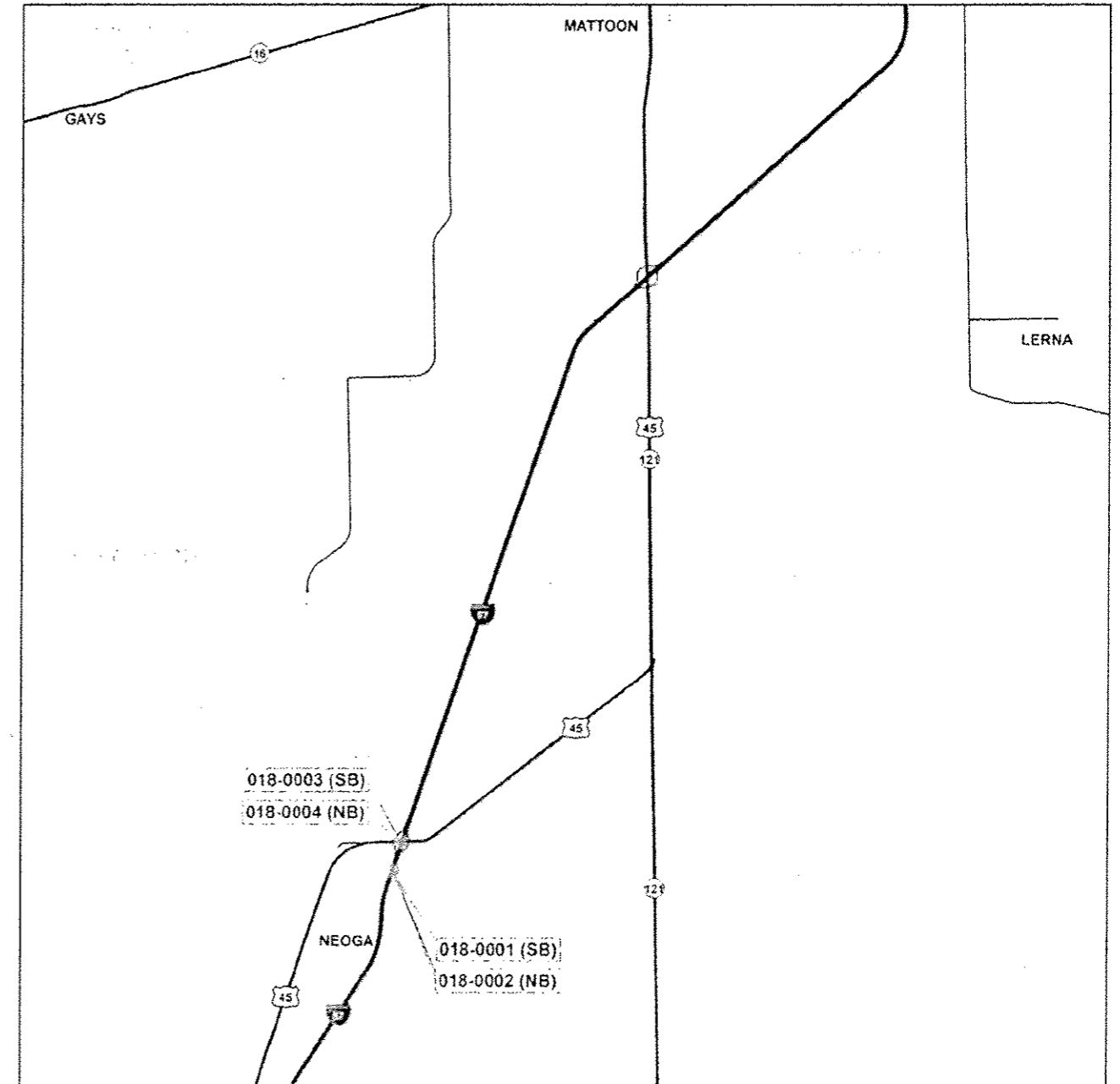
FILE NAME *	USER NAME *	DESIGNED -	REVISED -	STATE OF ILLINOIS DEPARTMENT OF TRANSPORTATION	TYPICAL APPLICATIONS OF INTERSTATE PAVEMENT MARKING	F.A.I. RTE.	SECTION	COUNTY	TOTAL SHEETS	SHEET NO.
677-shr-details.dgn	677-shr-details.dgn	DRAWN -	REVISED -			57	DT BRIDGE REPAIRS 2015-1		3	7
PLT SCALE * 1/8"=1'-0"	PLT SCALE * 1/8"=1'-0"	CHECKED -	REVISED -			CONTRACT NO. 74677				
PLT DATE * 7/22/2014	PLT DATE * 7/22/2014	DATE -	REVISED -			FED. ROAD DIST. NO. ILLINOIS FED. AID PROJECT				



D7 BRIDGE REPAIRS 2015-1
 S.N. 015-0003 (SB) & S.N. 015-0004 (NB)
 S.N. 015-0005 (NB) & S.N. 015-0006 (SB)
 COLES COUNTY



D7 BRIDGE REPAIRS 2015-1
 S.N. 018-0001 (SB) & S.N. 018-0002 (NB)
 S.N. 018-0003 (SB) & S.N. 018-0004 (NB)
 CUMBERLAND COUNTY



FILE NAME *	USER NAME *	DESIGNED -	REVISED -	STATE OF ILLINOIS DEPARTMENT OF TRANSPORTATION	BRIDGE LOCATION MAPS			P.A.I. RTE.	SECTION	COUNTY	TOTAL SHEETS	SHEET NO.
cr:\pwork\pwr\d7\swartz\08390717\077577-ahk-locations.dgn	swartz	DRAWN -	REVISED -					57	07 BRIDGE REPAIRS 2015-1	*	8	8
Default		CHECKED -	REVISED -		SCALE: N/A	SHEET 1	OF 1 SHEETS	STA.	TO STA.	CONTRACT NO. 74677	ILLINOIS FED. AID PROJECT	
		DATE -	REVISED -									

* COLES, CUMBERLAND