

F.A.P. RTE. 74683	SECTION D7 BRIDGE PAINTING 2015-	COUNTY ILLINOIS	TOTAL SHEETS 10	SHEET NO. 1
			CONTRACT NO. 74683	

• MOULTRIE & SHELBY

STATE OF ILLINOIS  
DEPARTMENT OF TRANSPORTATION  
DIVISION OF HIGHWAYS

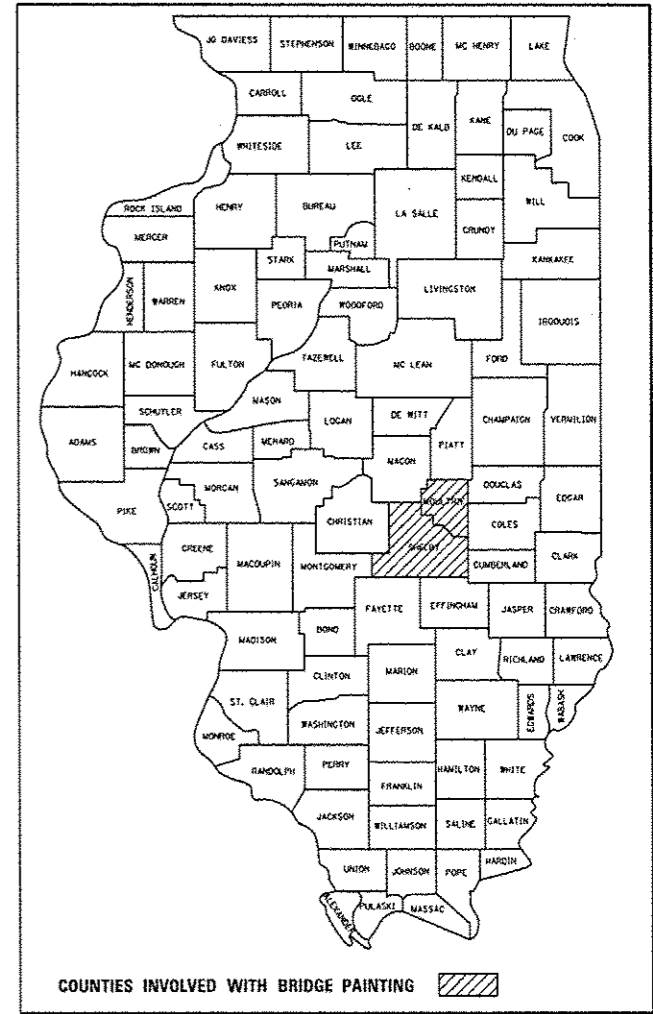
**PROPOSED  
HIGHWAY PLANS**

F.A.P. ROUTES 320 & 774 (IL RTE. 121 & IL RTE 128)  
SECTION D7 BRIDGE PAINTING 2015-1

FOR INDEX OF SHEETS, SEE SHEET NO. 2

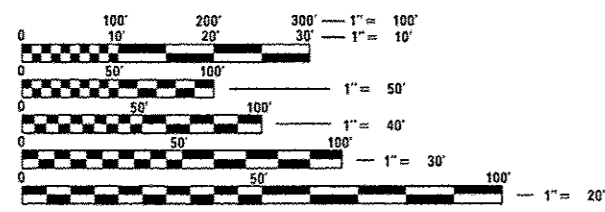
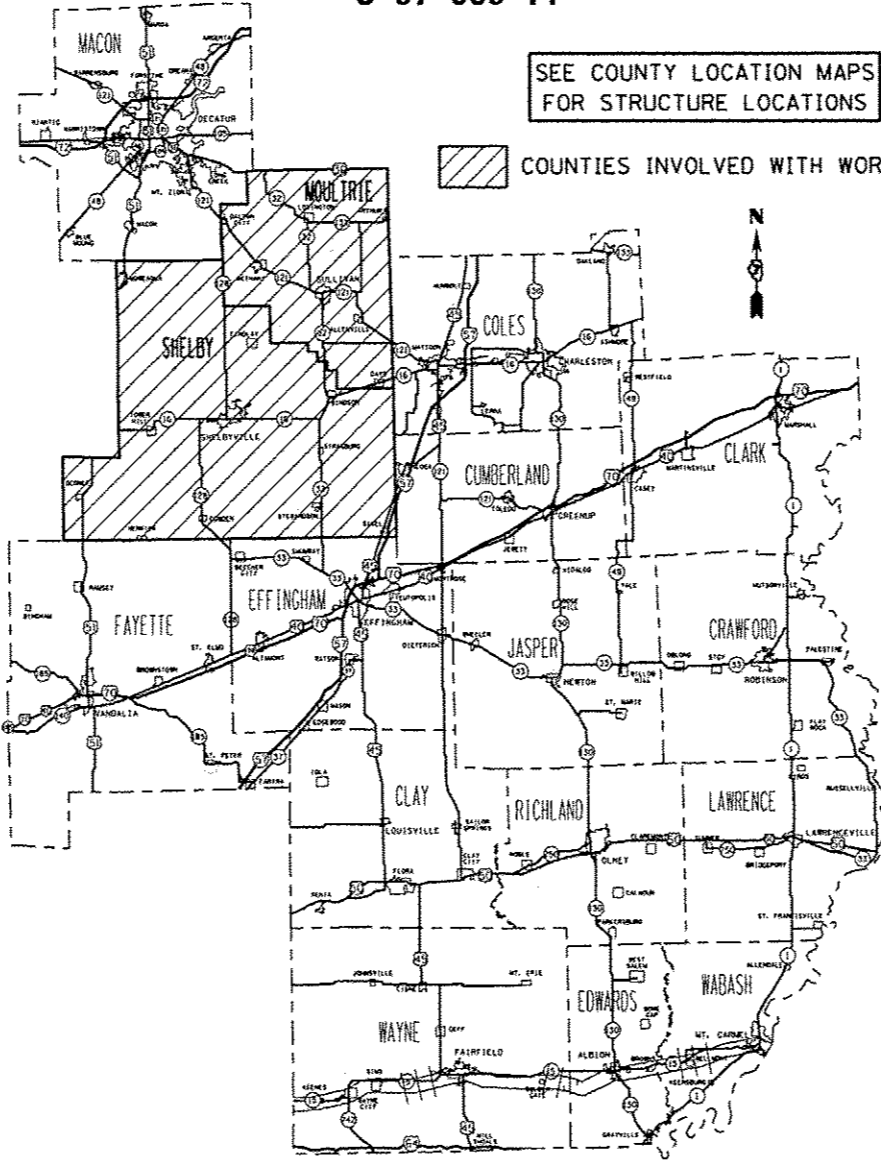
ADT =

**BRIDGE PAINTING  
MOULTRIE & SHELBY COUNTIES**  
C-97-089-14



SEE COUNTY LOCATION MAPS  
FOR STRUCTURE LOCATIONS

COUNTIES INVOLVED WITH WORK



FULL SIZE PLANS HAVE BEEN PREPARED USING STANDARD ENGINEERING SCALES. REDUCED SIZED PLANS WILL NOT CONFORM TO STANDARD SCALES. IN MAKING MEASUREMENTS ON REDUCED PLANS, THE ABOVE SCALES MAY BE USED.

J.U.L.I.E.  
JOINT UTILITY LOCATION INFORMATION FOR EXCAVATION  
1-800-892-0123  
OR 811

PROJECT ENGINEER: TOM RONAN  
PROJECT MANAGER: TOM RONAN  
PHONE: (217)-342-8320  
CONTRACT NO. 74683

STATE OF ILLINOIS  
DEPARTMENT OF TRANSPORTATION  
DIVISION OF HIGHWAYS

SUBMITTED July 31 2014  
Roger L. Orishell  
DEPUTY DIRECTOR OF HIGHWAYS, REGION ENGINEER

Oct 17 2014  
John D. Baranzelli, PE  
acting ENGINEER OF DESIGN AND ENVIRONMENT

Oct 17 2014  
Omer Osman, PE  
DIRECTOR OF HIGHWAYS, CHIEF ENGINEER

**PRINTED BY THE AUTHORITY  
OF THE STATE OF ILLINOIS**