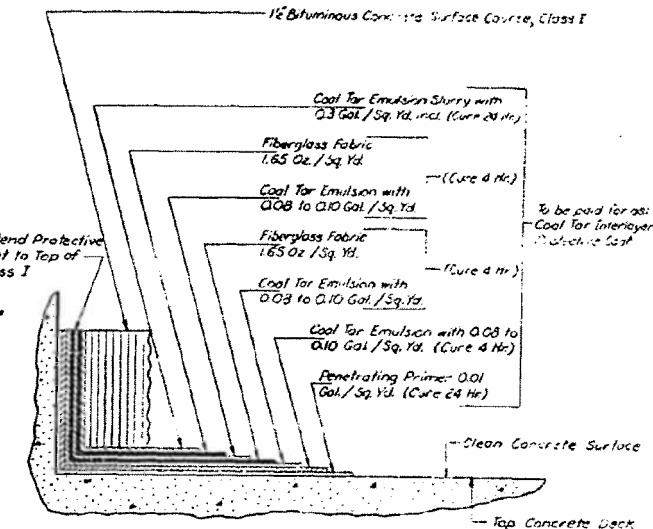
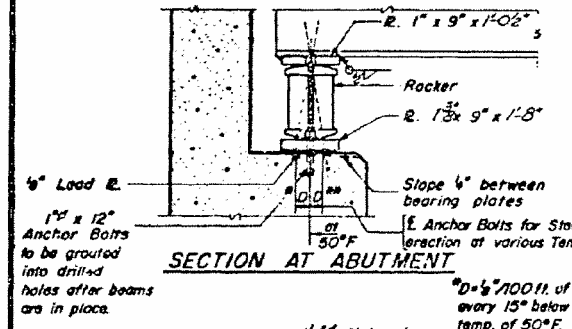


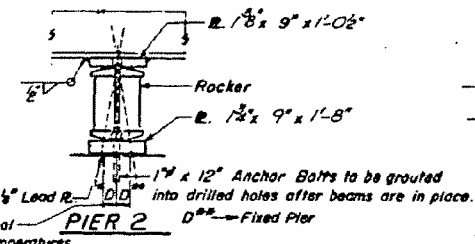
FRAMING PLAN
All beams are W33x130



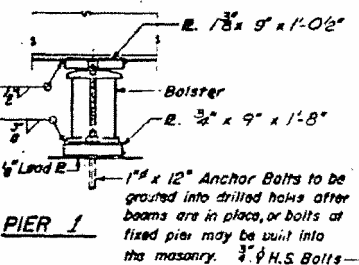
DECK SURFACING
with Cool Tar Interlayer Protective Coat



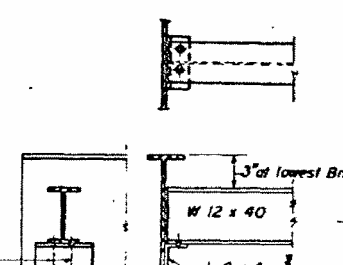
SECTION AT ABUTMENT



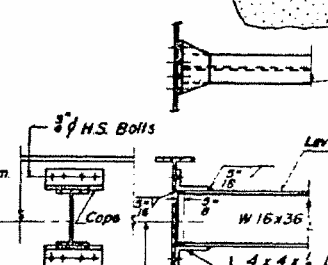
PIER 2
D Fixed Pier



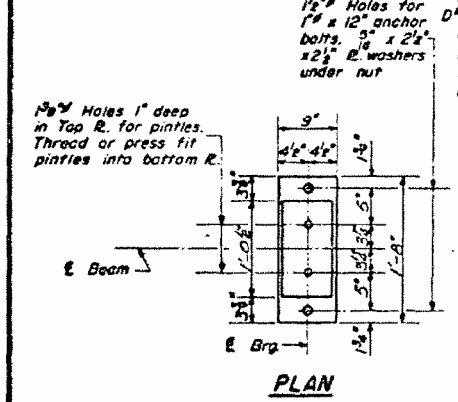
PIER 1



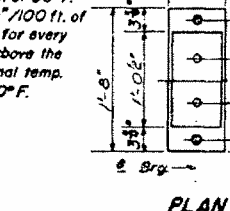
DIAPHRAGM D
10 Required



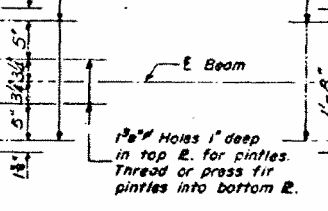
DIAPHRAGM D1
30 Required



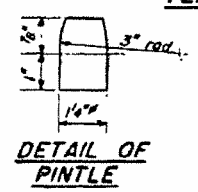
PLAN



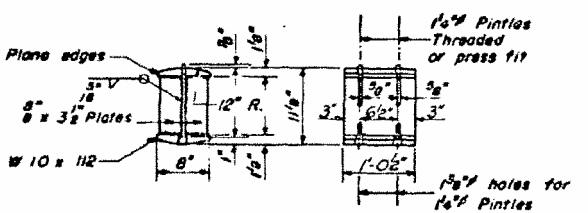
PLAN



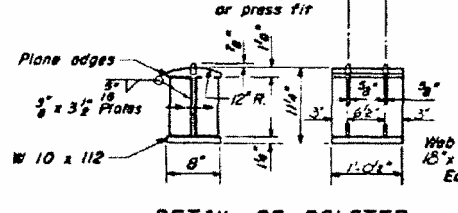
PLAN



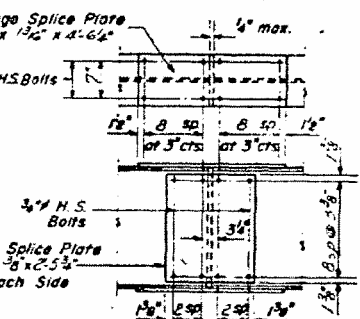
DETAIL OF PINTLE



DETAIL OF ROCKER AT ABUTS. & PIER 2



DETAIL OF BOLSTER AT PIER 1



DETAIL OF SPLICE

Note: Bearing seat surfaces shall be constructed or adjusted to the designated elevations within a tolerance of ± 1/8". Adjustment shall be made either by grinding the surface or by shimming the bearing. Two 1/2" adjusting shims, of the dimensions of the bottom bearing plate, shall be provided for each bearing in addition to all other plates or shims.

ELEVATION TOP OF W33x130

Beam	166	225	251
E Brq. N. Abut.	635.40	636.57	636.69
E Brq. Pier 1	635.62	635.01	635.93
E Splice	635.70	635.87	635.90
E Brq. Pier 2	636.69	636.23	636.15
E Brq. S. Abut.	639.10	639.27	639.19

DESIGNED: *Chris E. ...*
CHECKED: *Chi ...*
DRAWN: *A. Borrozo*
DRAWN: *W.A. Soulemon Jr.*
CHECKED: *C.T.C.*

I-2 2-2-62 Rev 11-9-62 Rev 8-16-63 Rev 12-10-63 Rev 8-1-70

STRUCTURAL STEEL
S.B.I. RTE. 128 SEC. 121.51
SHELBY COUNTY
STA. 214+52.07