

STATE OF ILLINOIS  
DEPARTMENT OF PUBLIC WORKS & BUILDINGS  
DIVISION OF HIGHWAYS

DATE	REVISION	BY	REASON	NO.
1-2-13	B-2B	CLAY	26	2

SHEET NO. 4  
OF 4 SHEETS

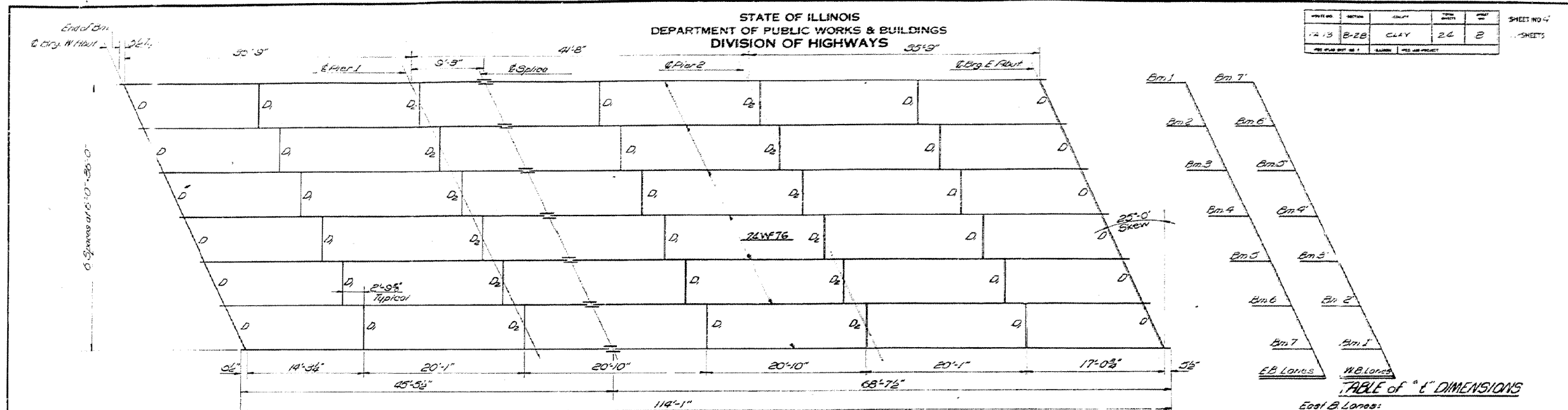


TABLE OF 'E' DIMENSIONS

East B Lanes:

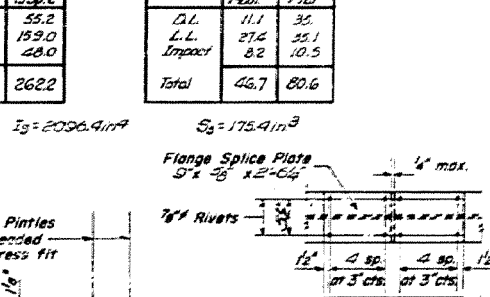
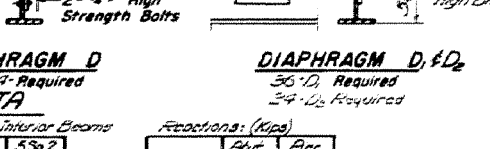
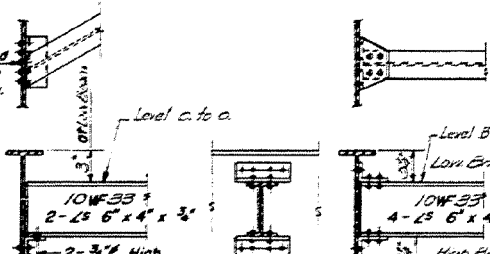
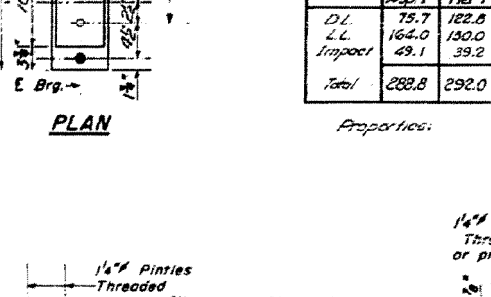
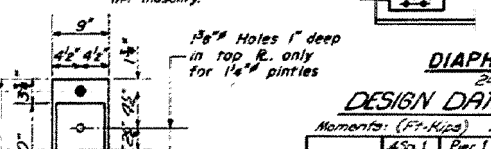
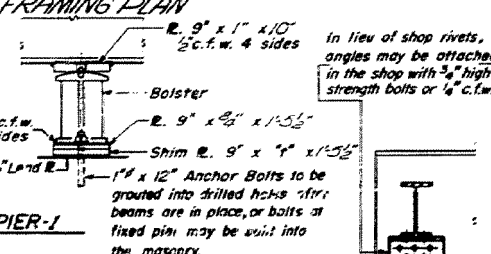
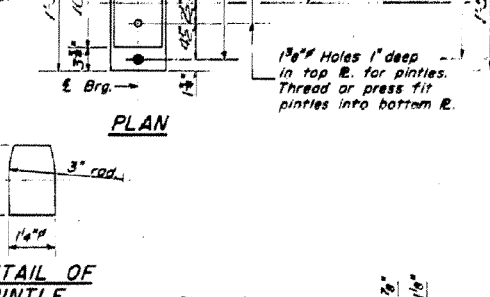
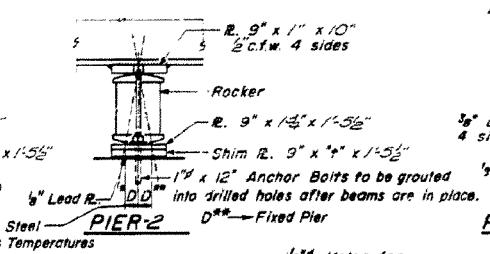
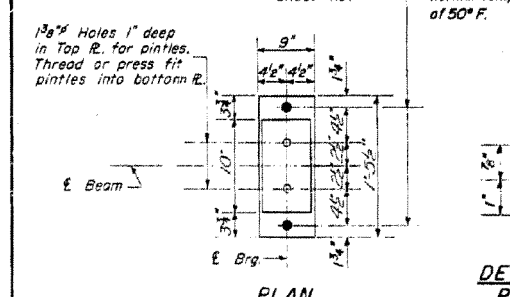
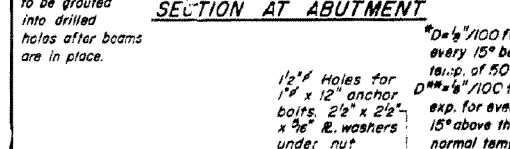
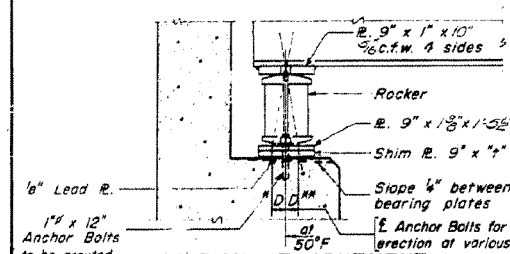
Location	Bm.1	Bm.2	Bm.3	Bm.4	Bm.5	Bm.6	Bm.7
W. Abut	2'	0'	4'	5'	0'	0'	0'
Pier 1	2'	0'	4'	2'	0'	0'	0'
Pier 2	2'	0'	4'	2'	0'	0'	0'
E. Abut	2'	0'	4'	1'	0'	0'	0'

West B Lanes:

Location	Bm.1	Bm.2	Bm.3	Bm.4	Bm.5	Bm.6	Bm.7
W. Abut	2'	0'	4'	2'	0'	0'	0'
Pier 1	2'	0'	4'	2'	0'	0'	0'
Pier 2	2'	0'	4'	2'	0'	0'	0'
E. Abut	2'	0'	4'	2'	0'	0'	0'

ELEVATION TOP OF WF

Location	Bm.1	Bm.2	Bm.3	Bm.4	Bm.5	Bm.6	Bm.7
W. Abut	447.21	447.30	447.40	447.40	447.40	447.20	447.17
E. Splice	447.18	447.21	447.23	447.41	447.27	447.26	447.19
E. Abut	447.17	447.30	447.28	447.40	447.36	447.20	447.12
E. Splice	447.13	447.15	447.10	447.42	447.00	447.27	447.10
E. Abut	447.21	447.34	447.42	447.44	447.40	447.23	447.17



DESIGNED: J. Kasper  
 CHECKED: R. Barnett  
 DRAWN: W. A. Sausman, Jr.  
 EXAMINED: [Signature]  
 PASSED: [Signature]  
 APPROVED: [Signature]

I-2 7-2-62 Rev 11-9-62 Rev. 6-16-63 Rev. 12-10-63

STRUCTURAL STEEL  
 EB & WB LANES  
 PART 13 - SEC. 8-2B  
 CLAY COUNTY  
 STA. 801+50

F.A.P. RTE. 327 & F.A.S. RTE. 1720  
 RICHLAND & CLAY