

F.A.P. RTE.	SECTION	COUNTY	TOTAL SHEETS	SHEET NO.
116	D7 BRIDGE PAINTING 2015-	ILLINOIS	1	1
CONTRACT NO. 74699				

VARIOUS COUNTIES

D-97-053-14



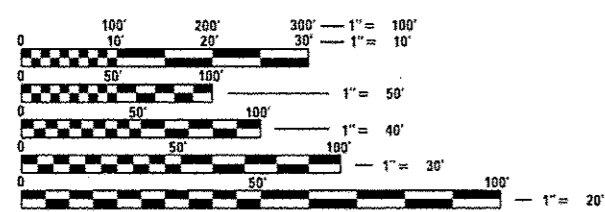
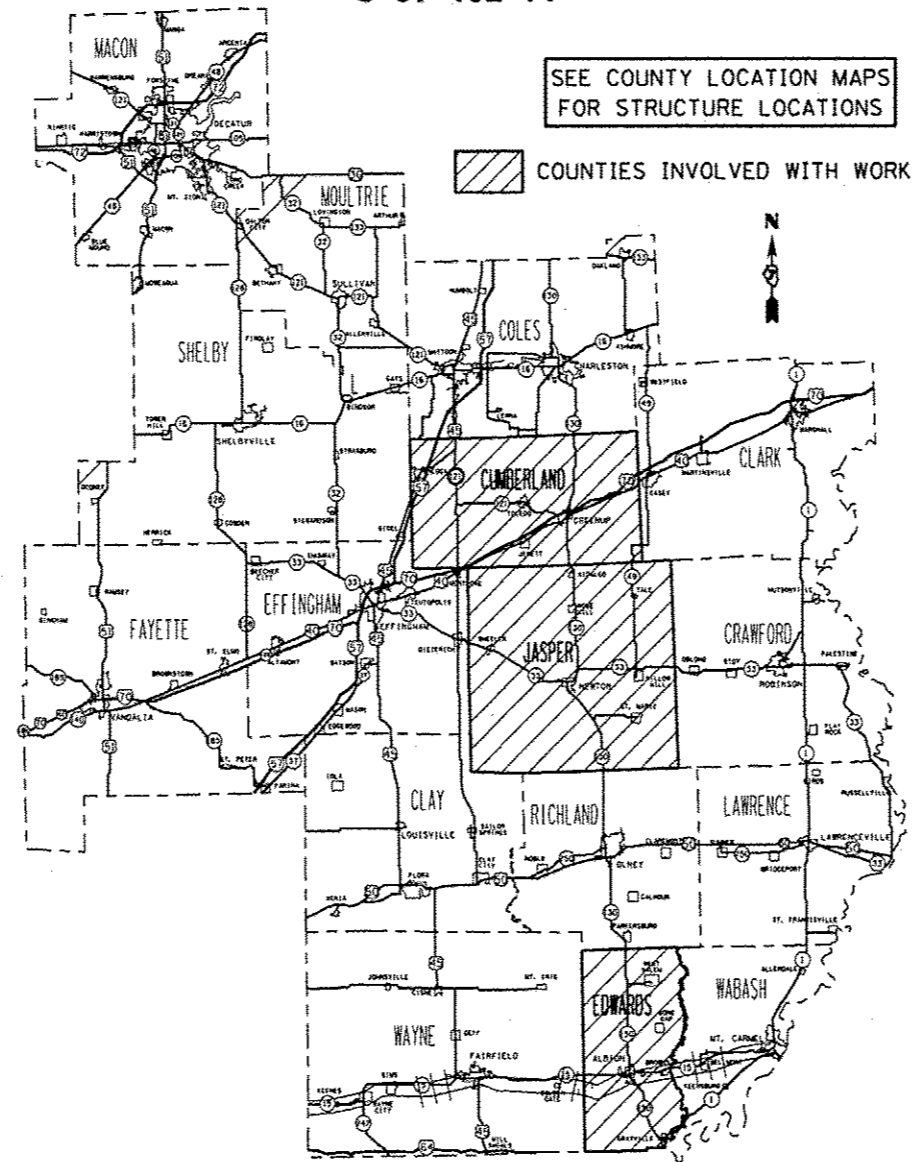
STATE OF ILLINOIS
DEPARTMENT OF TRANSPORTATION
DIVISION OF HIGHWAYS

**PROPOSED
HIGHWAY PLANS**

F.A.P. ROUTE 116 (IL. RTE. 33/130)
SECTION D7 BRIDGE PAINTING 2015-3

BRIDGE PAINTING
CUMBERLAND, JASPER & EDWARDS COUNTIES
C-97-102-14

FOR INDEX OF SHEETS, SEE SHEET NO. 2



FULL SIZE PLANS HAVE BEEN PREPARED USING STANDARD ENGINEERING SCALES. REDUCED SIZED PLANS WILL NOT CONFORM TO STANDARD SCALES. IN MAKING MEASUREMENTS ON REDUCED PLANS, THE ABOVE SCALES MAY BE USED.

J.U.L.I.E.
JOINT UTILITY LOCATION INFORMATION FOR EXCAVATION
1-800-892-0123
OR 811

PROJECT ENGINEER: TOM RONAN
PROJECT MANAGER: TOM RONAN
PHONE: (217)-342-8320
CONTRACT NO. 74699

STATE OF ILLINOIS
DEPARTMENT OF TRANSPORTATION
DIVISION OF HIGHWAYS

SUBMITTED August 04 20 14
Roger L. Drishell
DEPUTY DIRECTOR OF HIGHWAYS, REGION ENGINEER

Oct 17 20 14
John D. Baranzola, PE, Jr.
ENGINEER OF DESIGN AND ENVIRONMENT

Oct 17 20 14
Omer Osman, PE, Jr.
DIRECTOR OF HIGHWAYS, CHIEF ENGINEER

PRINTED BY THE AUTHORITY
OF THE STATE OF ILLINOIS