

F.A.P. RTE.	SECTION	COUNTY	TOTAL SHEETS	SHEET NO.
823	D7 BRIDGE PAINTING 2015-4	WAYNE	15	1
		ILLINOIS	CONTRACT NO. 74700	

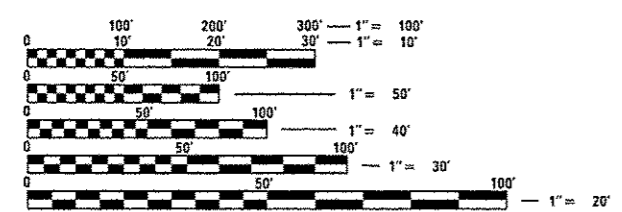
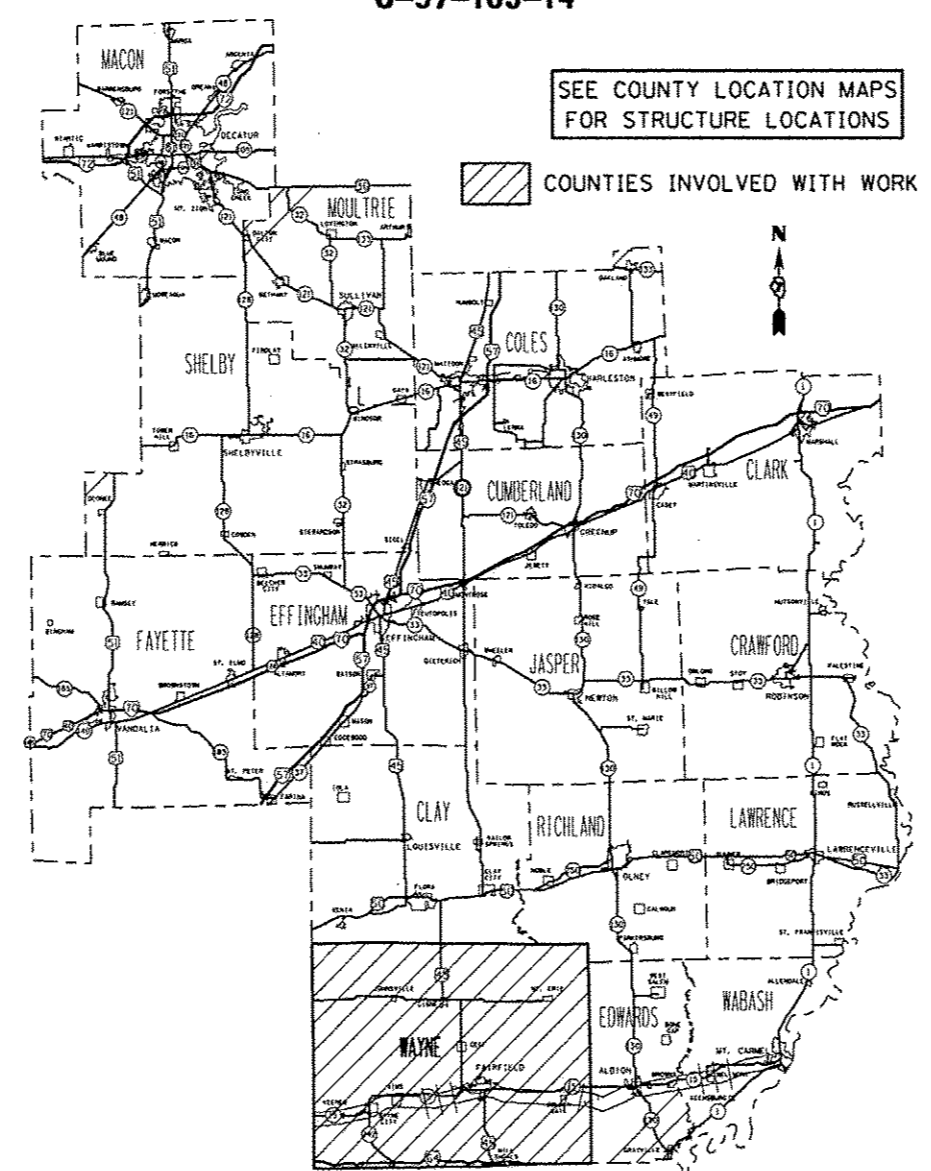
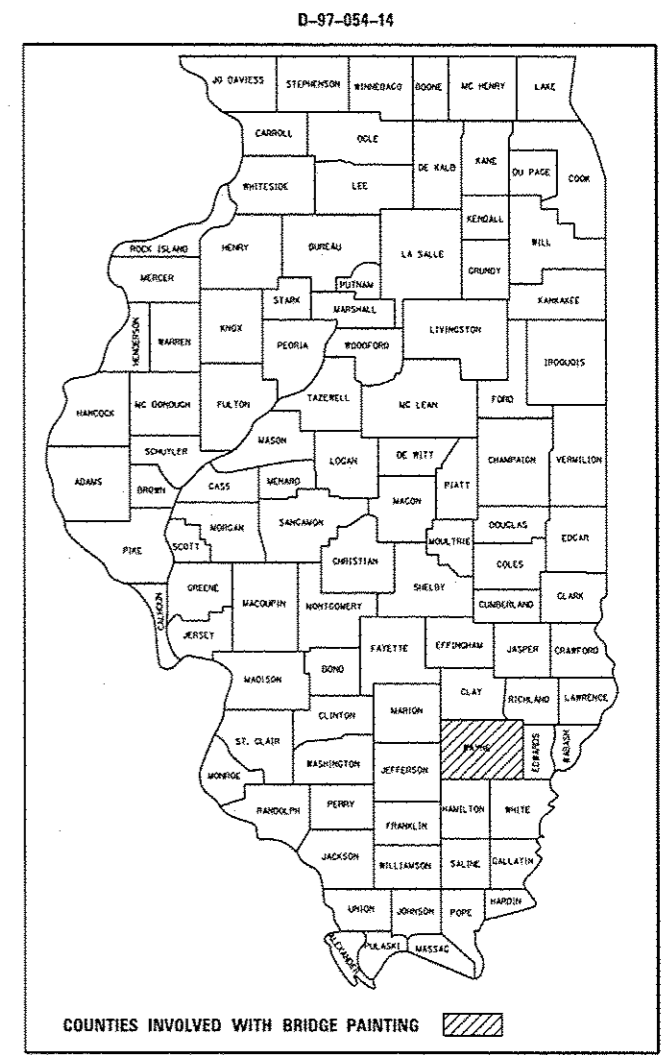
**STATE OF ILLINOIS
DEPARTMENT OF TRANSPORTATION
DIVISION OF HIGHWAYS**

**PROPOSED
HIGHWAY PLANS**

**F.A.P ROUTE 823 (IL. RTE. 15)
SECTION D7 BRIDGE PAINTING 2015-4**

**BRIDGE PAINTING
WAYNE COUNTY
C-97-103-14**

FOR INDEX OF SHEETS, SEE SHEET NO. 2



FULL SIZE PLANS HAVE BEEN PREPARED USING STANDARD ENGINEERING SCALES. REDUCED SIZED PLANS WILL NOT CONFORM TO STANDARD SCALES. IN MAKING MEASUREMENTS ON REDUCED PLANS, THE ABOVE SCALES MAY BE USED.

J.U.L.I.E.
JOINT UTILITY LOCATION INFORMATION FOR EXCAVATION
1-800-892-0123
OR 811

**PROJECT ENGINEER: TOM RONAN
PROJECT MANAGER: TOM RONAN
PHONE: (217)-342-8320
CONTRACT NO. 74700**

STATE OF ILLINOIS
DEPARTMENT OF TRANSPORTATION
DIVISION OF HIGHWAYS

SUBMITTED August 05 2014
Roy L. Orishell /RO
DEPUTY DIRECTOR OF HIGHWAYS, REGION ENGINEER

Oct 17 2014
John D. Baranzelli /JB
ENGINEER OF DESIGN AND ENVIRONMENT

Oct 17 2014
Omer Osman /OO
DIRECTOR OF HIGHWAYS, CHIEF ENGINEER

**PRINTED BY THE AUTHORITY
OF THE STATE OF ILLINOIS**