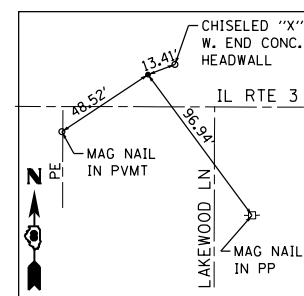
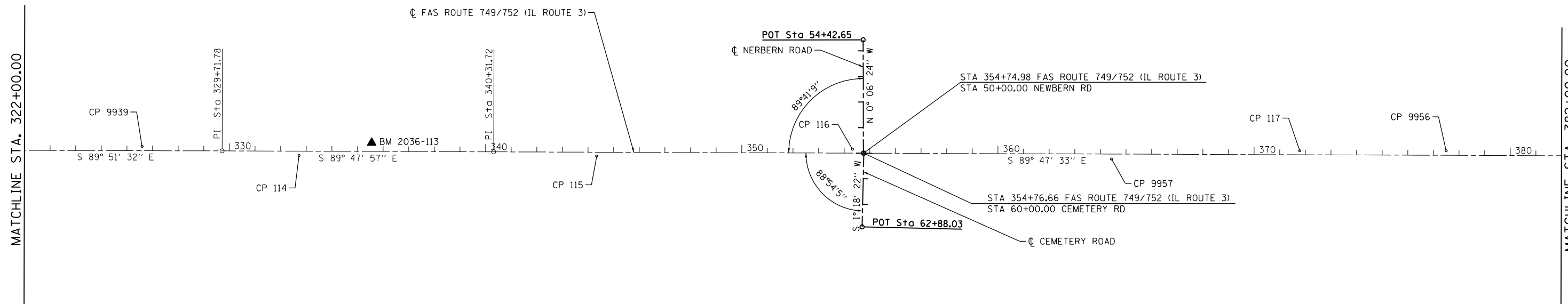




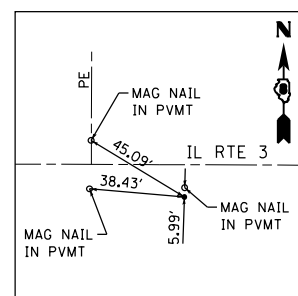
ALIGNMENT COORDINATES - IL RTE 3			
CONTROL POINT	STATION	COORDINATES	
		NORTHING	EASTING
P.O.T	329+71.78	849622.2265	2245415.3349
P.O.T	340+31.72	849618.5109	2246475.2689

ALIGNMENT COORDINATES - NEWBERN ROAD			
CONTROL POINT	STATION	COORDINATES	
		NORTHING	EASTING
P.O.T	50+00.00	849613.2850	2247918.5238
P.O.T	54+42.65	850055.9342	2247917.6988

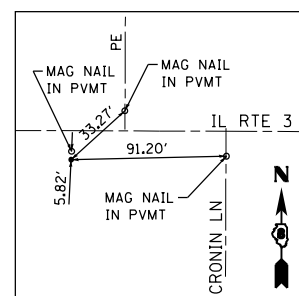
ALIGNMENT COORDINATES - CEMETERY ROAD			
CONTROL POINT	STATION	COORDINATES	
		NORTHING	EASTING
P.O.T	60+00.00	849613.2789	2247920.2034
P.O.T	62+88.03	849325.3238	2247913.6383



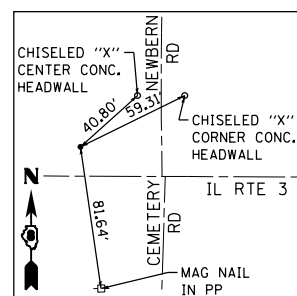
**CONTROL POINT #9939**  
IRON PIN WITH IDOT CAP  
STA 326+59.29, 16.71' LT.  
N 849639.7064  
E 2245102.8814



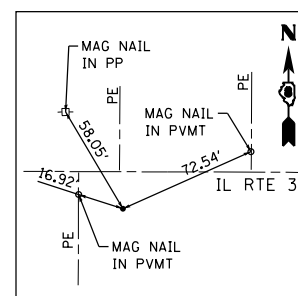
**CONTROL POINT #114**  
IRON PIN WITH IDOT CAP  
STA 332+72.21, 16.81' RT.  
N 849604.3614  
E 2245715.6979



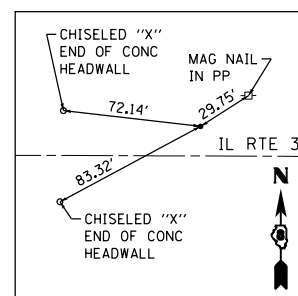
**CONTROL POINT #115**  
IRON PIN WITH IDOT CAP  
STA 344+33.91, 15.08' RT.  
N 849601.9698  
E 2246877.3955



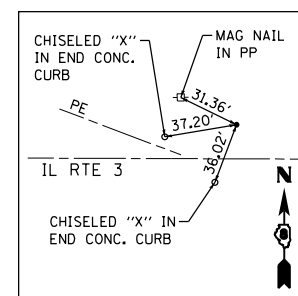
**CONTROL POINT #116**  
IRON PIN WITH IDOT CAP  
STA 354+32.40, 15.29' LT.  
N 849628.7284  
E 2247875.9900



**CONTROL POINT #9957**  
IRON PIN WITH IDOT CAP  
STA 364+43.37, 19.25' RT.  
N 849590.5300  
E 2248886.8308



**CONTROL POINT #117**  
IRON PIN WITH IDOT CAP  
STA 371+78.40, 15.41' LT.  
N 849622.5312  
E 2249621.9814



**CONTROL POINT #9956**  
IRON PIN WITH IDOT CAP  
STA 377+49.76, 17.76' LT.  
N 849622.8113  
E 2250193.3419

**BENCHMARK 2036-113**  
EL. 630.13

CUT "□" ON CENTER OF HEADWALL AT NORTH SIDE OF IL. 3, ±0.33 MILES WEST OF NEWBERN AND CEMETERY ROADS



FILE NAME = S:\Projects\805-0028-VHY\_IL\_3\_Correction\Drawn\CADD\_Sheets\08176788-sh-ATB.dgn



USER NAME = ljackson	DESIGNED - ACM	REVISED -
MODEL NAME = Plan5	DRAWN - EDW	REVISED -
PLOT SCALE = 399.9992' / in.	CHECKED - LWJ	REVISED -
PLOT DATE = 8/22/2014	DATE - 8-11-14	REVISED -

STATE OF ILLINOIS  
DEPARTMENT OF TRANSPORTATION

ALIGNMENTS AND TIES		
FAS ROUTE 749/752 (IL ROUTE 3)		
SCALE: 1"=200'	SHEET 5 OF 6 SHEETS	STA. 322+00 TO STA. 382+00

F.A.S. RTE.	SECTION	COUNTY	TOTAL SHEETS	SHEET NO.
• 749/752	101-2RS-1	JERSEY	438	52
			CONTRACT NO. 76789	
ILLINOIS FED. AID PROJECT				