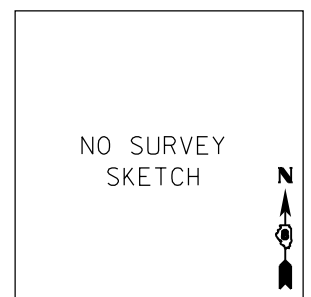
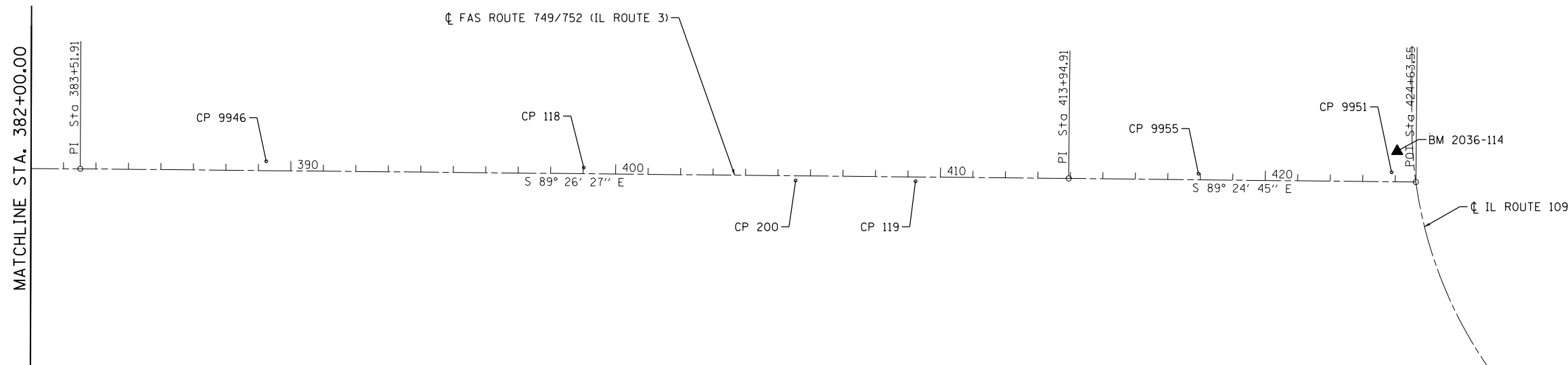
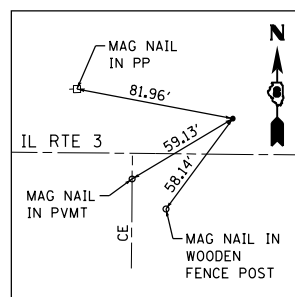




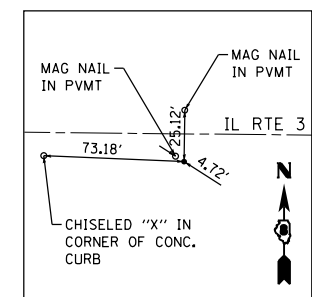
ALIGNMENT COORDINATES - IL RTE 3			
CONTROL POINT	STATION	COORDINATES	
		NORTHING	EASTING
P.I.	383+51.91	849602.8680	2250795.4330
P.I.	413+94.91	849573.1711	2253838.2846
P.I.	424+63.55	849562.2157	2254906.8691



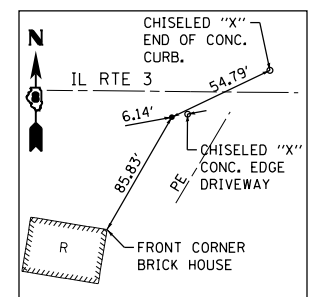
CONTROL POINT #9946
 IRON PIN WITH IDOT CAP
 STA 389+23.93, 28.65' LT.
 N 849625.9311
 E 2251367.7039



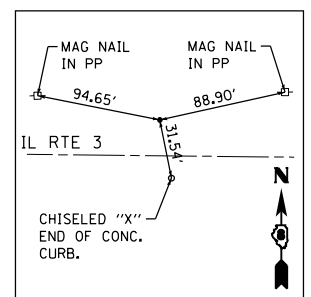
CONTROL POINT #118
 IRON PIN WITH IDOT CAP
 STA 399+01.73, 18.64' LT.
 N 849606.3779
 E 2252345.3542



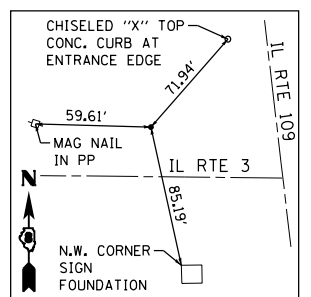
CONTROL POINT #200
 IRON PIN WITH IDOT CAP
 STA 405+54.20, 14.47' RT.
 N 849566.9055
 E 2252997.4737



CONTROL POINT #119
 IRON PIN WITH IDOT CAP
 STA 409+23.48, 13.38' RT.
 N 849564.3898
 E 2253366.7447



CONTROL POINT #9955
 IRON PIN WITH IDOT CAP
 STA 417+94.29, 18.66' LT.
 N 849587.7334
 E 2254237.8312



CONTROL POINT #9951
 IRON PIN WITH IDOT CAP
 STA 423+88.57, 29.10' LT.
 N 849592.0873
 E 2254832.1926

BENCHMARK 2036-114
 EL. 632.07
 RAILROAD SPIKE IN GUY POLE AT
 NORTHWEST CORNER OF IL. 3 AND
 IL. 109



FILE NAME = S:\Projects\089-0828-VHY_IL_3_Corridor\Drawn\CADD_Sheets\0876789-sh-ATB.dgn



USER NAME = ljackson	DESIGNED - ACM	REVISED -
MODEL NAME = Plan6	DRAWN - EDW	REVISED -
PLOT SCALE = 399.9992' / in.	CHECKED - LWJ	REVISED -
PLOT DATE = 8/22/2014	DATE - 8-11-14	REVISED -

**STATE OF ILLINOIS
 DEPARTMENT OF TRANSPORTATION**

ALIGNMENTS AND TIES		
FAS ROUTE 749/752 (IL ROUTE 3)		
SCALE: 1"=200'	SHEET 6 OF 6 SHEETS	STA. 382+00 TO STA. 424+63.55

F.A.S. RTE.	SECTION	COUNTY	TOTAL SHEETS	SHEET NO.
•	101-2RS-1	JERSEY	438	53
• 749/752			CONTRACT NO. 76789	
ILLINOIS FED. AID PROJECT				