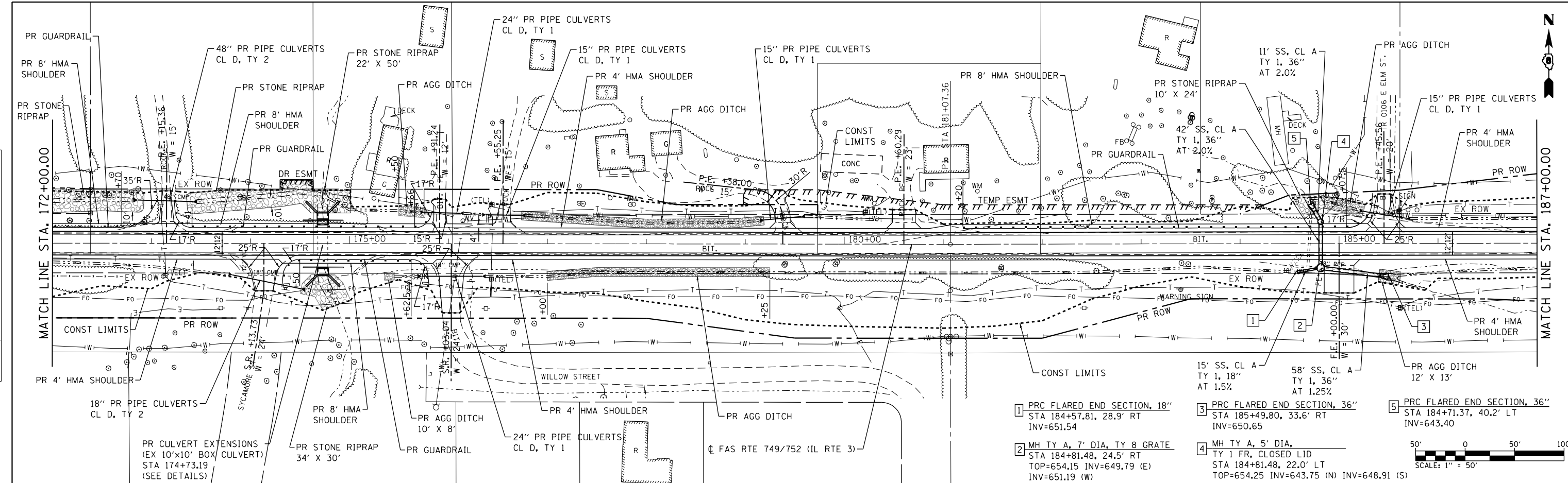
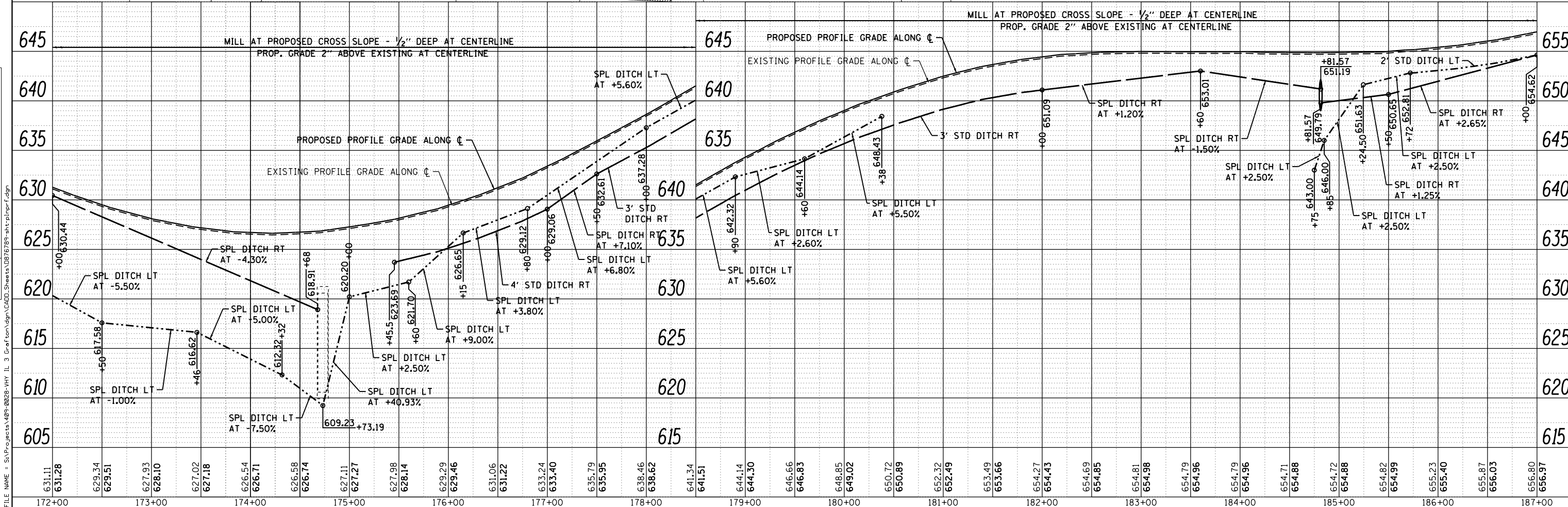
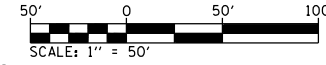


PLAN	SURVEYED	DATE
	PLOTTED	
	CHECKED	
	AT	
	BY	
	NO.	

PROFILE	SURVEYED	DATE
	PLOTTED	
	CHECKED	
	AT	
	BY	
	NO.	



- 1 PRC FLARED END SECTION, 18' STA 184+57.81, 28.9' RT INV=651.54
- 2 MH TY A, 7' DIA, TY 8 GRATE STA 184+81.48, 24.5' RT TOP=654.15 INV=649.79 (E) INV=651.19 (W)
- 3 PRC FLARED END SECTION, 36' STA 185+49.80, 33.6' RT INV=650.65
- 4 MH TY A, 5' DIA, TY 1 FR, CLOSED LID STA 184+81.48, 22.0' LT TOP=654.25 INV=643.75 (N) INV=648.91 (S)
- 5 PRC FLARED END SECTION, 36' STA 184+71.37, 40.2' LT INV=643.40



USER NAME = l_jackson	DESIGNED - ACM	REVISED -
MODEL NAME = PP07	DRAWN - EDW	REVISED -
PLOT SCALE = 99.9998' / in.	CHECKED - LWJ	REVISED -
PLOT DATE = 8/22/2014	DATE - 8-11-14	REVISED -

**STATE OF ILLINOIS
DEPARTMENT OF TRANSPORTATION**

**PLAN AND PROFILE
FAS ROUTE 749/752 (IL RTE. 3)**

SCALE: 1"=50' SHEET 7 OF 23 SHEETS STA. 172+00 TO STA. 187+00

F.A.S. RTE.	SECTION	COUNTY	TOTAL SHEETS	SHEET NO.
749/752	101-2RS-1	JERSEY	438	60
CONTRACT NO. 76789			ILLINOIS FED. AID PROJECT	