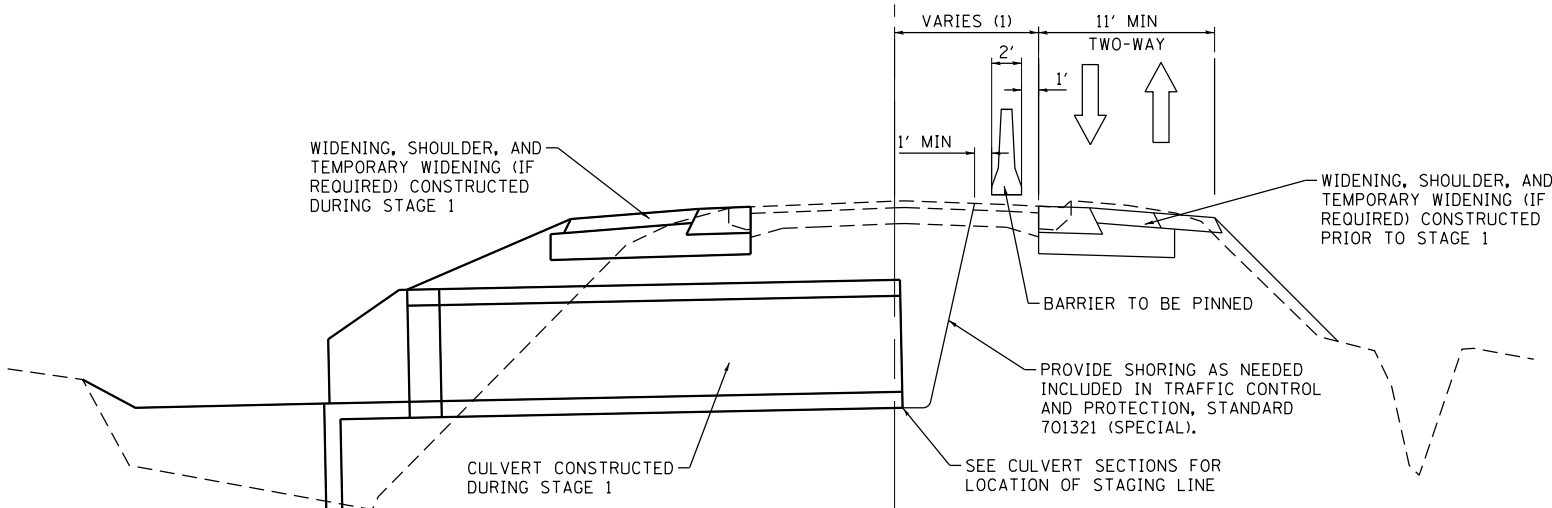
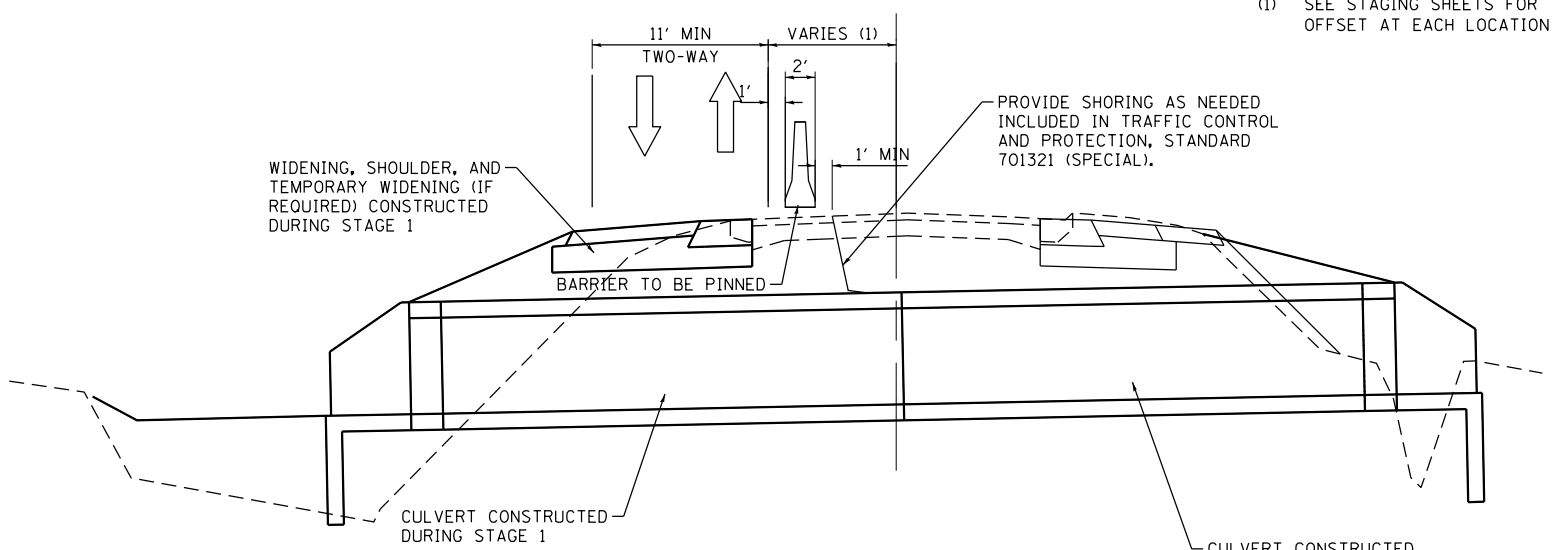


TYPICAL TEMPORARY WIDENING DETAIL



TYPICAL STAGE 1



TYPICAL STAGE 2

(1) SEE STAGING SHEETS FOR OFFSET AT EACH LOCATION

STAGED CONSTRUCTION AND TRAFFIC CONTROL NOTES:

1. STAGING LANE CLOSURES SHALL BE LIMITED TO NO MORE THAN 2 LOCATIONS AT ONE TIME.
2. TEMPORARY BRIDGE TRAFFIC SIGNALS SHALL BE PAID FOR ONCE PER LOCATION, WHICH SHALL INCLUDE ALL MATERIALS, LABOR, AND EQUIPMENT REQUIRED, SUCH AS ADDITIONAL HEADS FOR ENTRANCES, AND ANY RELOCATIONS OF EQUIPMENT REQUIRED WHEN CONVERTING FROM STAGE 1 TO STAGE 2.
3. TEMPORARY CONCRETE BARRIER WITHIN 42" OF EXCAVATIONS SHALL BE PINNED IN PLACE ON THE TRAFFIC SIDE. PINNING SHALL BE INCLUDED IN THE COST OF TEMPORARY CONCRETE BARRIER AND RELOCATE TEMPORARY CONCRETE BARRIER.
4. AGGREGATE FOR TEMPORARY ACCESS SHALL BE USED TO MAINTAIN ACCESS TO PROPERTY ADJACENT TO THE WORK ZONE. AGGREGATE SHALL BE A MINIMUM OF 6" THICK FOR PRIVATE AND COMMERCIAL ENTRANCES AND 8" THICK FOR PUBLIC ROADS.
5. A MINIMUM OF 2 - 10 FT WIDE LANES SHALL BE PROVIDED WHEN FLAGGERS OR TEMPORARY BRIDGE TRAFFIC SIGNALS ARE NOT IN USE. EXCAVATIONS THAT RESULT IN REDUCING THE TRAVELED WAY TO LESS THAN 2 - 10 FT WIDE LANES (SUCH AS THE WIDENING OPERATIONS) SHALL BE BACKFILLED PRIOR TO REMOVAL OF FLAGGERS OR TEMPORARY BRIDGE TRAFFIC SIGNALS AT THE END OF THE WORK DAY.
6. ALL LABOR AND MATERIALS REQUIRED TO COMPLETE THE STAGED CONSTRUCTION OF THE CULVERTS NOT PAID FOR SEPARATELY, SHALL BE INCLUDED IN THE COST OF TRAFFIC CONTROL AND PROTECTION, STANDARD 701321 (SPECIAL) FOR EACH LOCATION.

FILE NAME = S:\Projects\1099-0028-VHY_IL_3_Croxford\1099-0028-VHY_IL_3_Croxford\1099-0028-VHY_IL_3_Croxford-staging.dgn



USER NAME = ljackson	DESIGNED - ACM	REVISED -
MODEL NAME = Details and Notes	DRAWN - EDW	REVISED -
PLOT SCALE = 1/199,9976" / in.	CHECKED - LWJ	REVISED -
PLOT DATE = 8/22/2014	DATE - 8-11-14	REVISED -

**STATE OF ILLINOIS
DEPARTMENT OF TRANSPORTATION**

**STAGING AND TRAFFIC CONTROL
DETAILS AND NOTES**

F.A.S. RTE.	SECTION	COUNTY	TOTAL SHEETS	SHEET NO.
• 749/752	101-2RS-1	JERSEY	438	91
CONTRACT NO. 76789				

SCALE: SHEET 1 OF 17 SHEETS

ILLINOIS FED. AID PROJECT