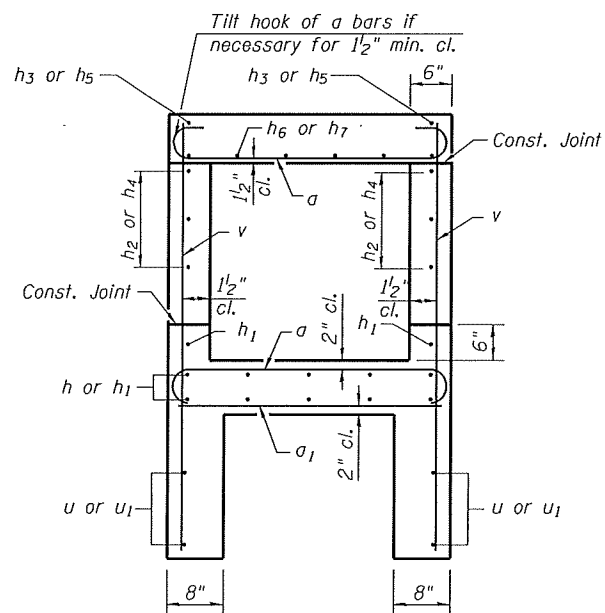
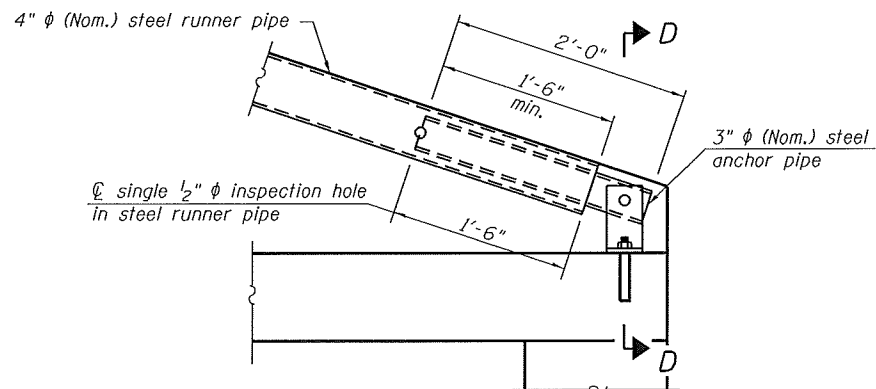


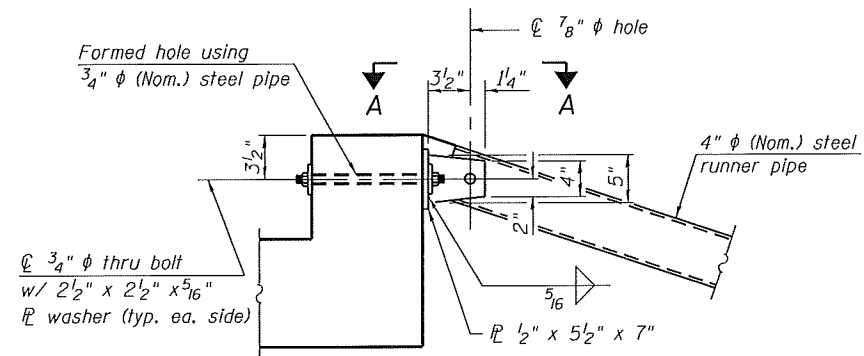
SECTION A-A



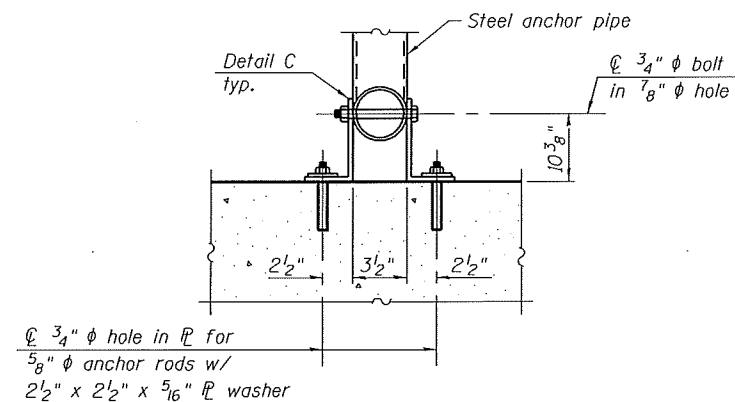
SECTION B-B



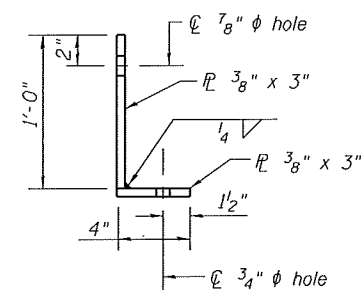
DETAIL A



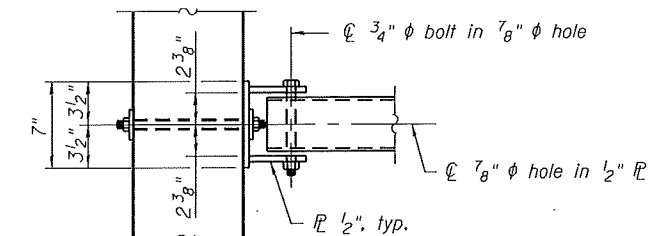
DETAIL B



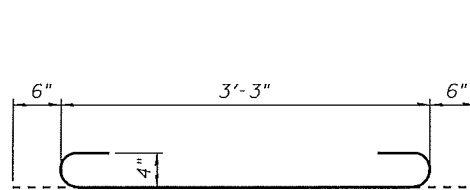
SECTION D-D



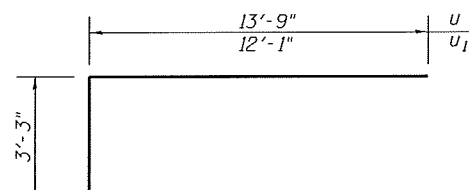
DETAIL C



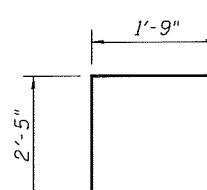
VIEW A-A



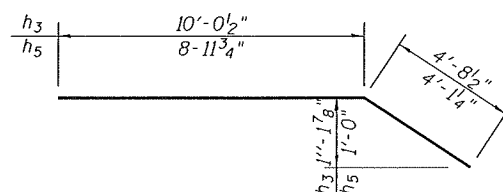
BAR a



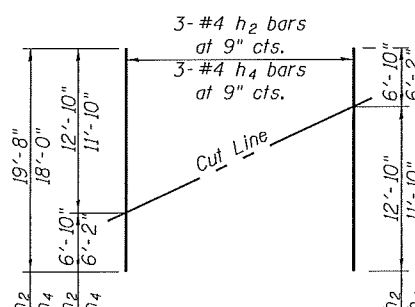
BARS u & u1



BAR d

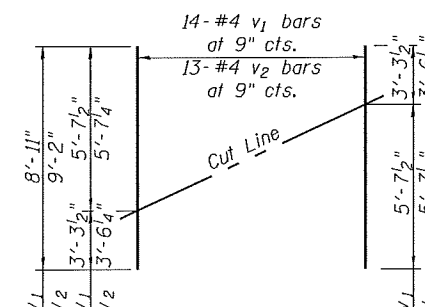


BARS h3 & h5



FIELD CUTTING DIAGRAM

Order h2 & h4 bars full length. Cut as shown and use remainder of bars in opposite wall.



FIELD CUTTING DIAGRAM

Order v1 & v2 bars full length. Cut as shown and use remainder of bars in opposite wall.

TOTAL BILL OF MATERIAL

Bar	No.	Size	Length	Shape	
a	74	#4	4'-3"	U	
a1	17	#4	3'-3"	U	
d	10	#4	4'-2"	L	
h	12	#4	13'-9"	—	
h1	12	#4	12'-1"	—	
h2	3	#4	20'-9"	—	
h3	2	#4	14'-9"	—	
h4	3	#4	18'-0"	—	
h5	2	#4	13'-1"	—	
h6	6	#5	4'-5"	—	
h7	6	#5	3'-10"	—	
u	2	#4	30'-9"	U	
u1	2	#4	27'-5"	U	
v	22	#4	5'-8"	—	
v1	14	#4	8'-11"	—	
v2	13	#4	9'-2"	—	
Concrete Removal				Cu. Yd.	1.0
Reinforcement Bars				Pound	980
Expansion Bolts 3/4 Inch				Each	16
Concrete Box Culverts				Cu. Yd.	8.4
Traversable Pipe Grate				Foot	22

FILE NAME = 242+68.06-76789-003.dgn



USER NAME = jdirkelmann
 Illinois Design Firm Number 184.001670
 PLOT SCALE =
 PLOT DATE = 8/8/2014

DESIGNED - JD
 CHECKED - BB
 DRAWN - WS
 CHECKED - CJF

REVISED -
 REVISED -
 REVISED -
 REVISED -

STATE OF ILLINOIS
 DEPARTMENT OF TRANSPORTATION

BOX CULVERT EXTENSION DETAILS
 STATION 242 + 68.86

SHEET NO. 3 OF 3 SHEETS

F.A.S. RTE.	SECTION	COUNTY	TOTAL SHEETS	SHEET NO.
752	101-2RS-1	JERSEY	438	223
			CONTRACT NO. 76789	
ILLINOIS FED. AID PROJECT				