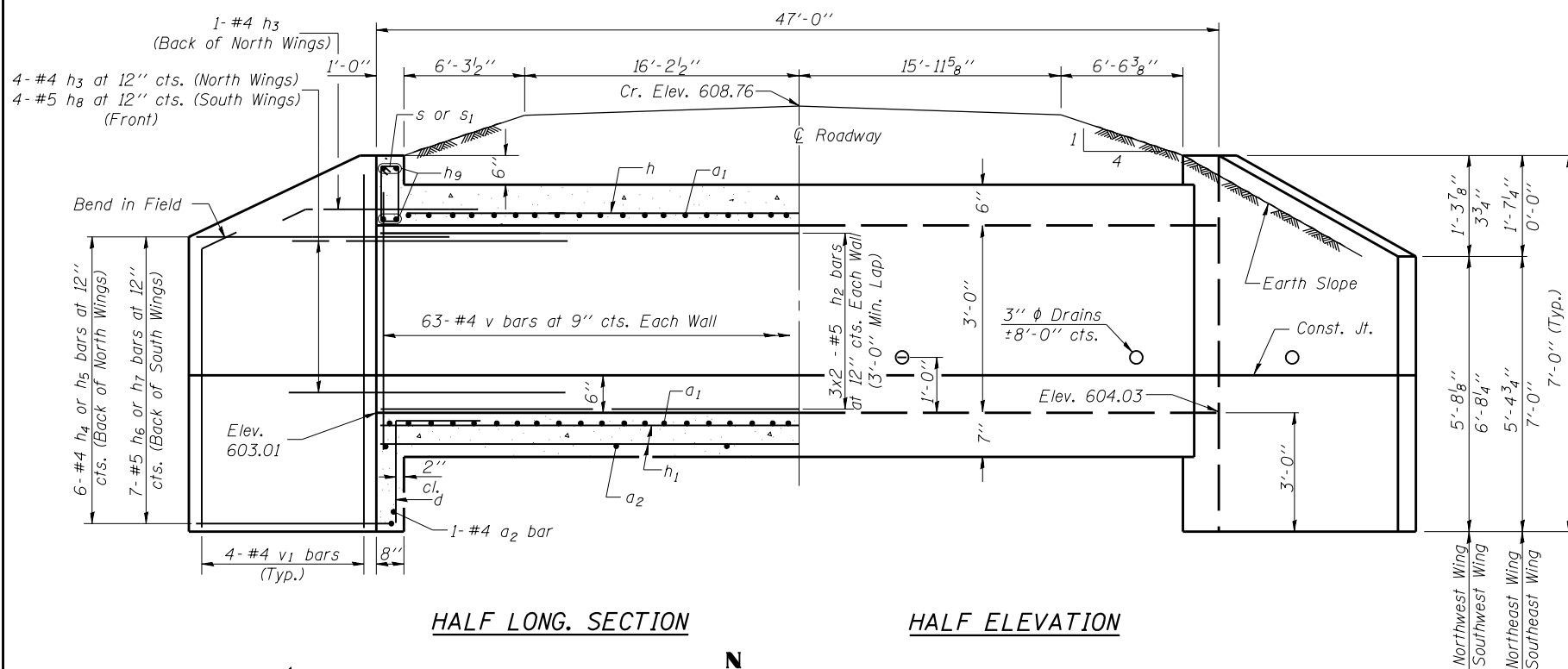
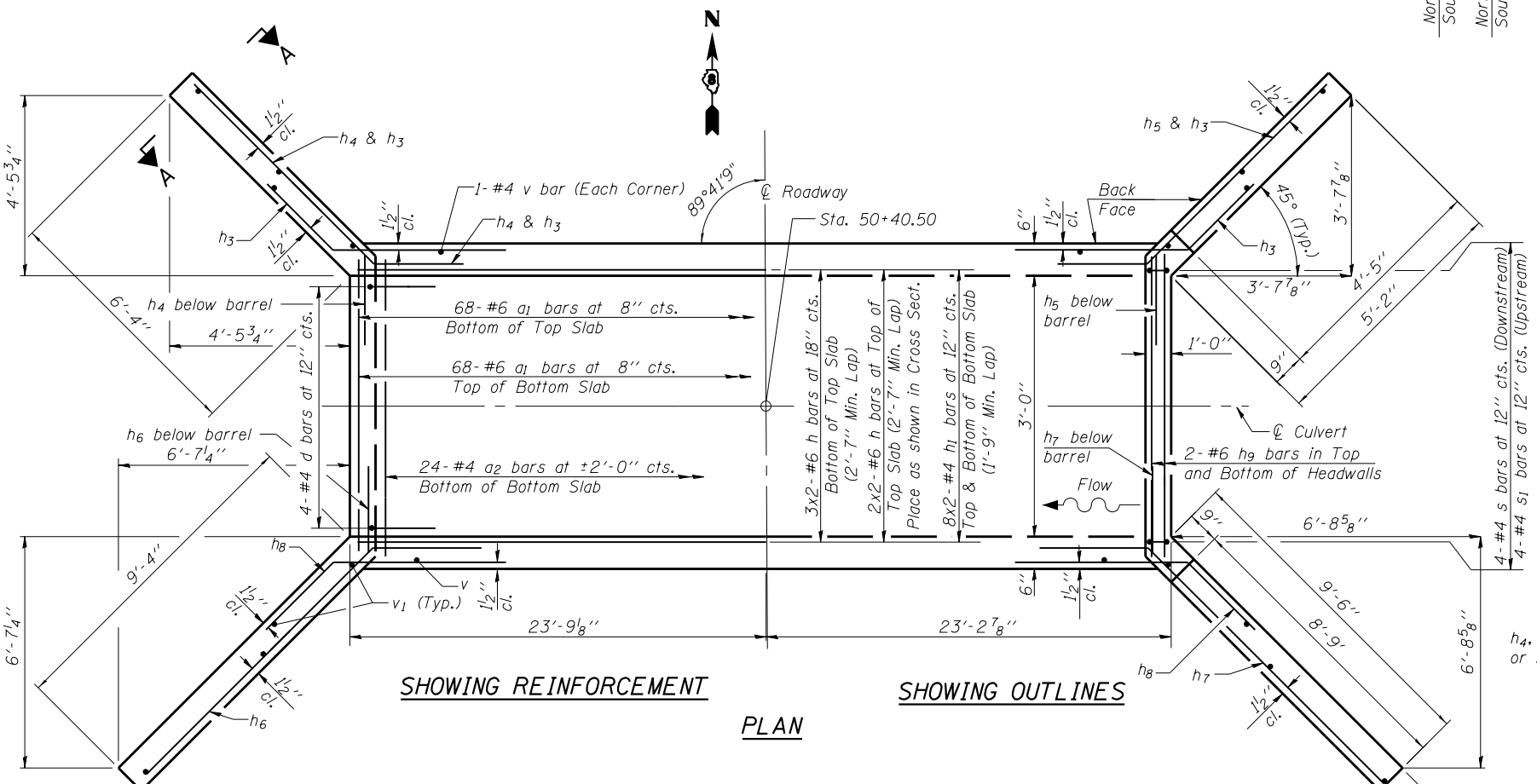


PRINT DATE: 10/16/2014 12:46:56 PM Y:\4018 IDOT BLD W034 Culvert Replacements\Drawings\Bridge\Final\PlotSheets\76789_278_5040_Details.dgn



HALF LONG. SECTION

HALF ELEVATION



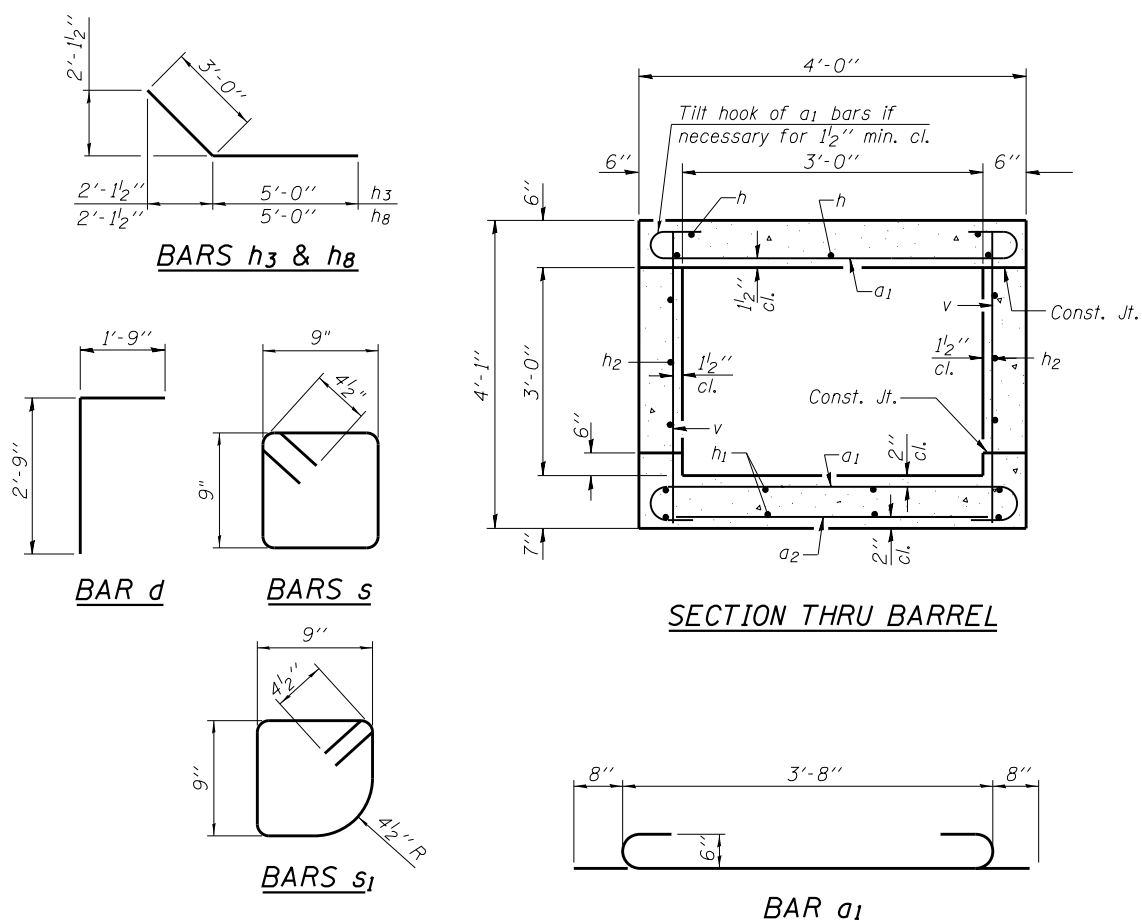
SHOWING REINFORCEMENT

SHOWING OUTLINES

PLAN

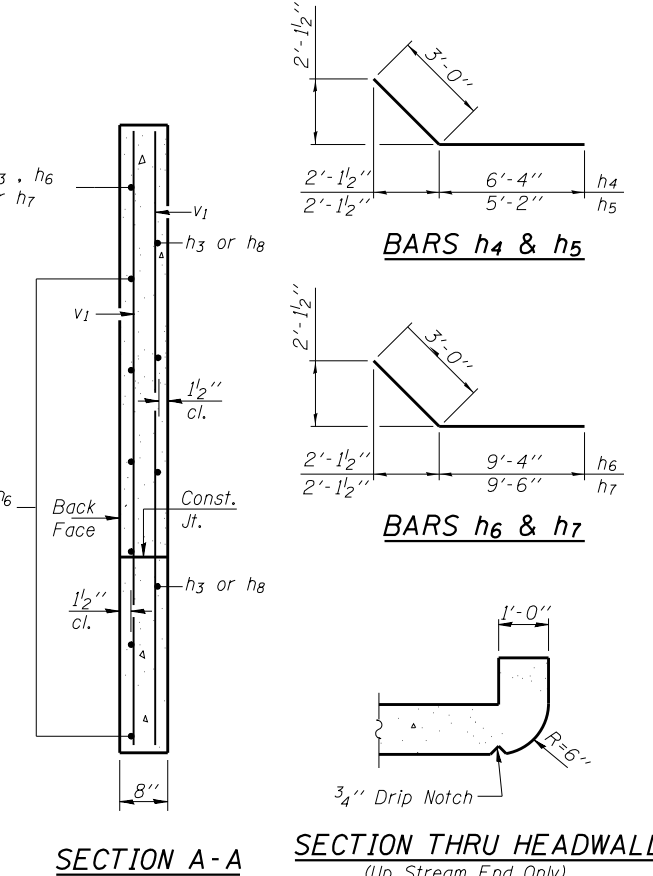
NOTES

A distance of half the length of the wingwall but not less than six feet of the barrel shall be poured monolithically with the wingwalls.
 Bars indicated thus 12 x 4-#5 etc. indicates 12 lines of bars with 4 lengths per line.



SECTION THRU BARREL

SECTION THRU HEADWALL



SECTION A-A

SECTION THRU HEADWALL (Up Stream End Only)

BILL OF MATERIAL

Bar	No.	Size	Length	Shape
a1	136	#6	5'-0"	U
a2	26	#4	3'-8"	U
d	8	#4	4'-6"	L
h	10	#6	24'-8"	—
h1	16	#4	24'-3"	—
h2	12	#5	24'-10"	—
h3	10	#4	8'-0"	—
h4	6	#4	9'-4"	—
h5	6	#4	8'-2"	—
h6	7	#5	12'-4"	—
h7	7	#5	12'-6"	—
h8	8	#5	8'-0"	—
h9	8	#6	3'-0"	—
s	4	#4	3'-9"	U
s1	4	#4	3'-8"	U
v	130	#4	3'-9"	—
v1	16	#4	6'-8"	—
Reinforcement Bars			Pound	2,870
Concrete Box Culverts			Cu. Yd.	18.3

EFK Moen, LLC
 Civil Engineering Design
 303 Fountains Parkway, Suite 240
 Fairview Heights, IL 62208
 Phone 618-206-4250

USER NAME = cdl
 DESIGNED - CMC
 CHECKED - CTW
 DRAWN - JAA
 DATE - 10/16/2014

DESIGNED - CMC
 CHECKED - CTW
 DRAWN - JAA
 DATE - 10/16/2014

REVISED -
 REVISED -
 REVISED -
 REVISED -

STATE OF ILLINOIS
 DEPARTMENT OF TRANSPORTATION

CAST IN PLACE CULVERT DETAILS
 3'x3' BOX CULVERT - STA. 50+40.50 NEWBERN RD.

SHEET NO. 2 OF 2 SHEETS

F.A.S. RT. SECTION COUNTY TOTAL SHEETS SHEET NO.
 • 101-2RS-1 JERSEY 438 278
 • 749/752 CONTRACT NO. 76789
 ILLINOIS FED. AID PROJECT