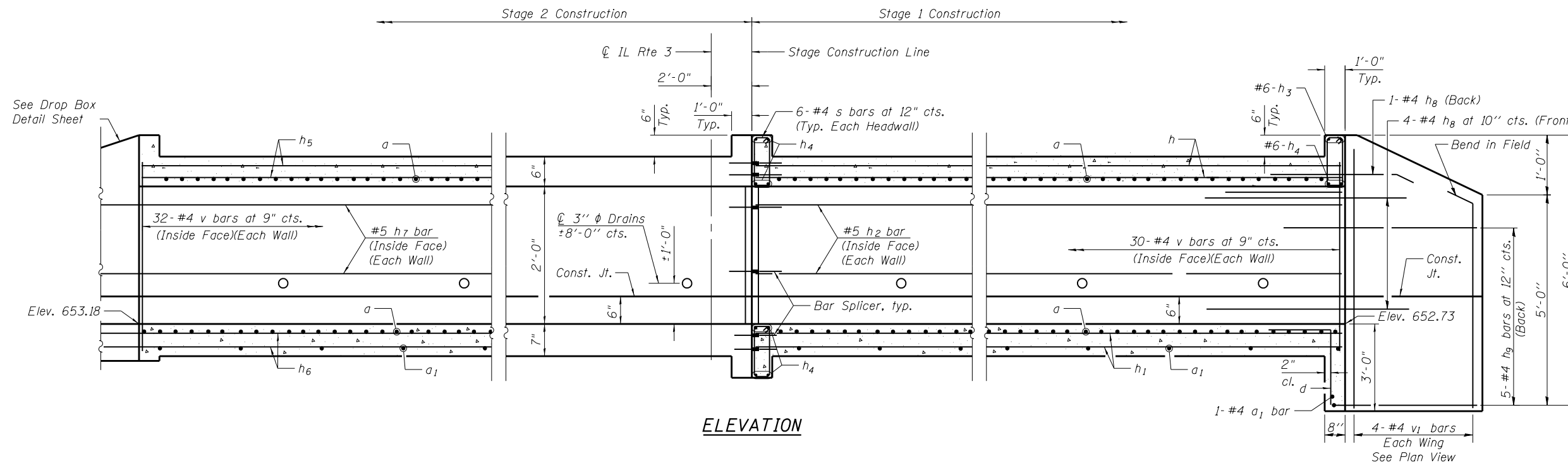
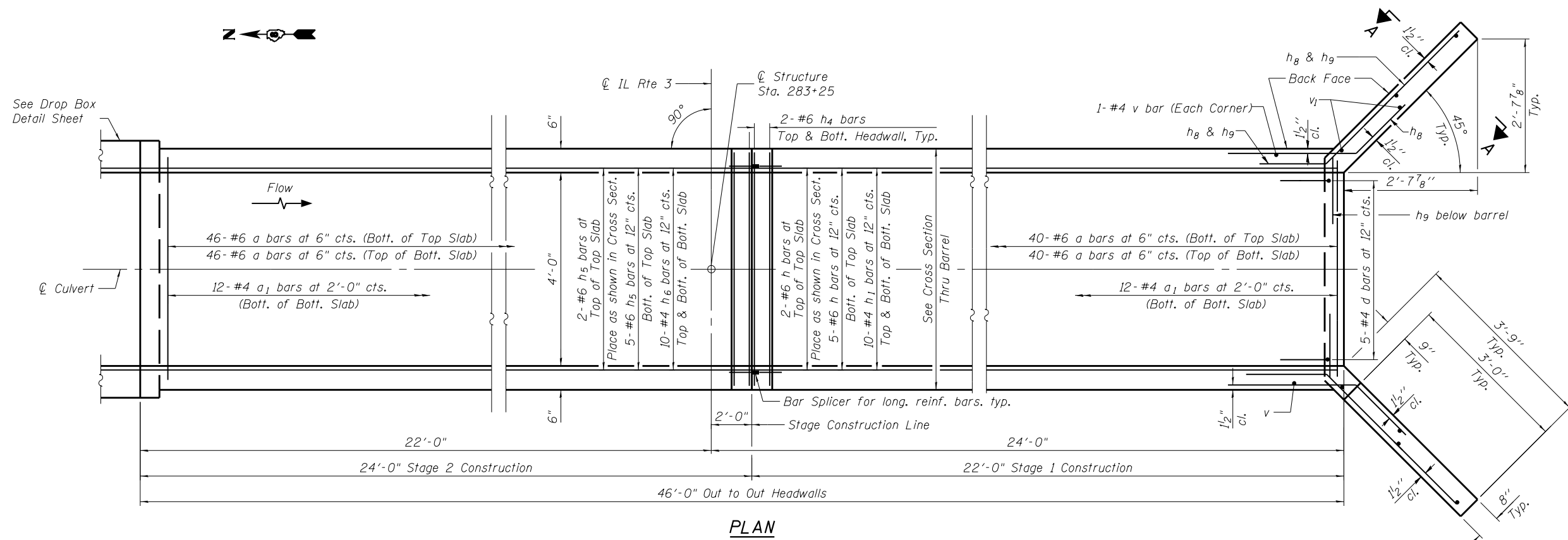


PRINT DATE: 10/16/2014 12:45:10 PM Y:\41018 IDOT B.L.A. W034 Culvert Replacements\DGN\Bridg\Final\PlotSheets\76789_282_28325_Details.dgn



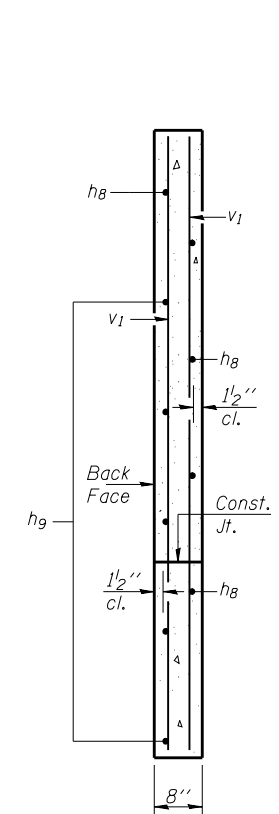
ELEVATION



PLAN

NOTES

A distance of half the length of the wingwall but not less than six feet of the barrel shall be poured monolithically with the wingwalls.
 For Bill of Material and reinforcing details, see Sheet 3 of 4.
 For Section Thru Barrel, see Sheet 3 of 4.
 For Bar Splicer details, see Sheet 4 of 4.
 See Sheet 3 of 4 for dimensions, details and reinforcing of drop structure.



SECTION A-A

EFK Moen, LLC
 Civil Engineering Design
 303 Fountains Parkway, Suite 240
 Fairview Heights, IL 62208
 Phone 618-206-4250

USER NAME = cdl	DESIGNED - CMC	REVISED -
PLOT SCALE = 0.1667' / 1"	CHECKED - CTW	REVISED -
PLOT DATE = 10/16/2014	DRAWN - JAA	REVISED -
	DATE - 10/16/2014	REVISED -

STATE OF ILLINOIS
DEPARTMENT OF TRANSPORTATION

CAST IN PLACE CULVERT DETAILS
4'x2' BOX CULVERT - STA. 283 + 25

SHEET NO. 2 OF 4 SHEETS

F.A.S. RTE.	SECTION	COUNTY	TOTAL SHEETS	SHEET NO.
• 749/752	101-2RS-1	JERSEY	438	282
ILLINOIS FED. AID PROJECT			CONTRACT NO. 76789	