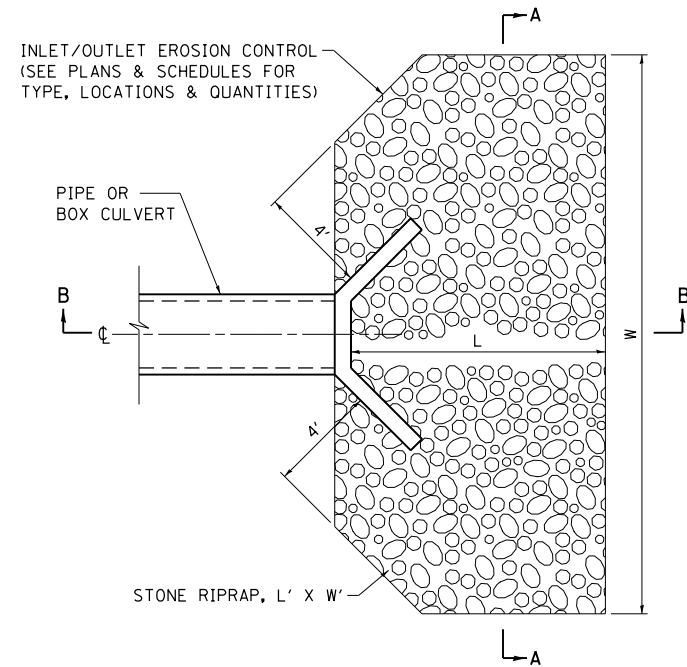
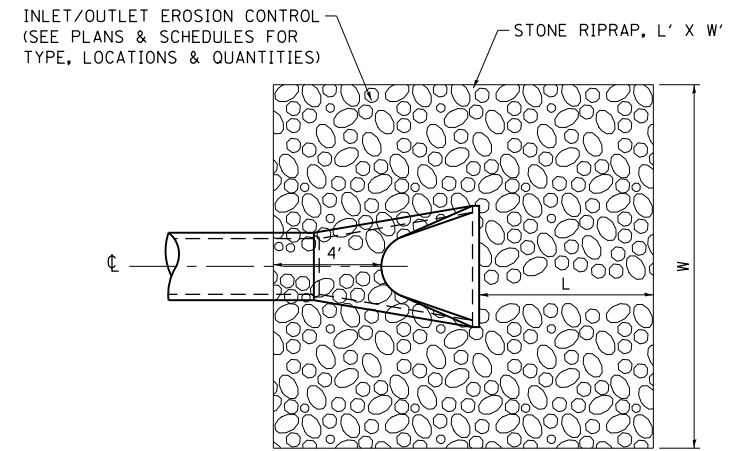


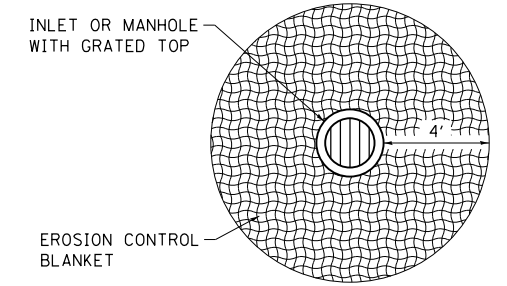
CULVERT END SECTION



CULVERT HEADWALL

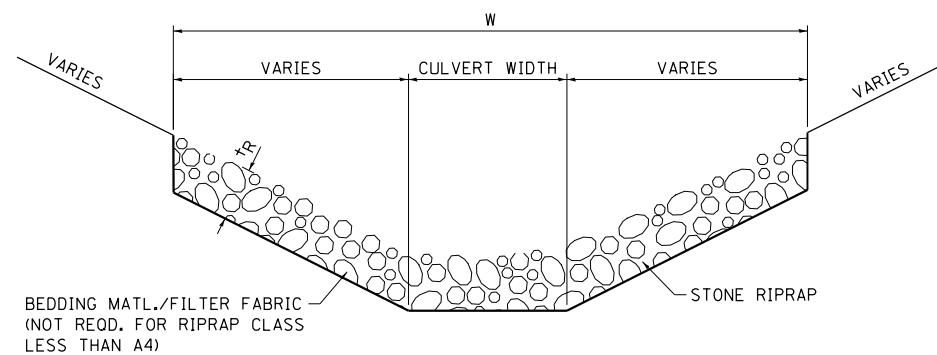


FLARED END SECTION

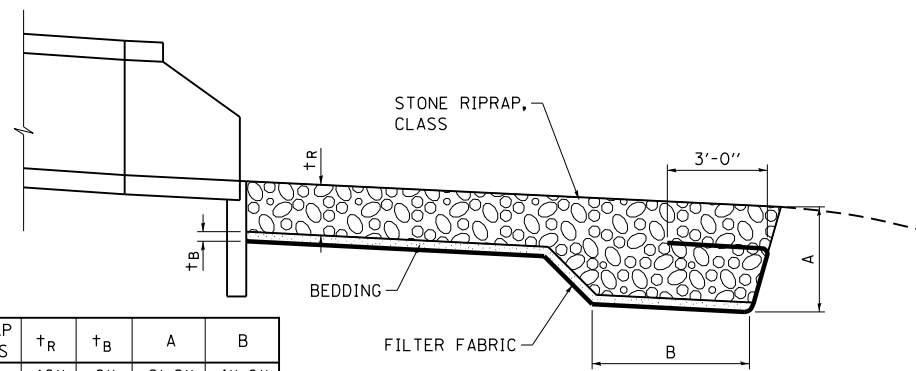


AREA INLETS

PERMANENT EROSION CONTROL AT INLET/OUTLET STRUCTURES



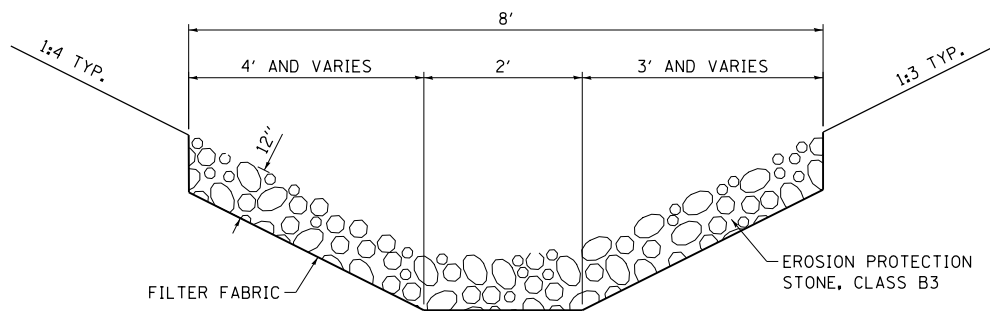
RIPRAP DETAIL SECTION A-A



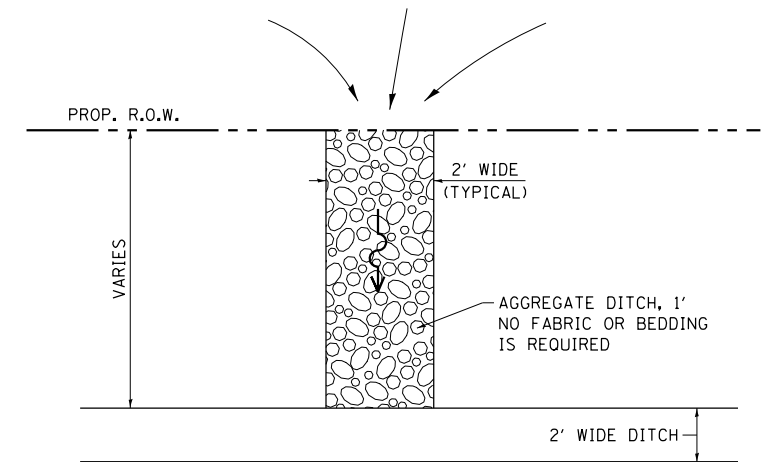
RIPRAP DETAIL SECTION B-B

RIPRAP CLASS	t _R	t _B	A	B
A4	16"	6"	2'-8"	4'-0"
A5	22"	8"	3'-8"	5'-6"
A6	26"	10"	4'-4"	6'-6"
A7	30"	12"	5'-0"	7'-6"

NOTE: DETAIL SHALL BE MODIFIED TO AVOID UTILITY CONFLICTS, WHEN NECESSARY, AT THE DIRECTION OF THE ENGINEER.



AGGREGATE DITCH DETAIL



NOTE: TO BE INSTALLED AT THE DIRECTION OF THE ENGINEER.

FIELD DRAINAGE OUTLET DETAIL

FILE NAME = S:\Projects\08-022B-VHY_IL_3_GraFton\lgm\CADD_Sheets\0876789-sh-detailed.dgn



USER NAME = ljackson	DESIGNED - ACM	REVISED -
MODEL NAME = DETAIL 6	DRAWN - EDW	REVISED -
PLOT SCALE = 20.0000' / in.	CHECKED - LWJ	REVISED -
PLOT DATE = 8/11/2014	DATE - 8-11-14	REVISED -

**STATE OF ILLINOIS
DEPARTMENT OF TRANSPORTATION**

**PERMANENT EROSION CONTROL
DETAILS**

SCALE: SHEET 6 OF 9 SHEETS

F.A.S. RTE.	SECTION	COUNTY	TOTAL SHEETS	SHEET NO.
•	101-2RS-1	JERSEY	438	290
• 749/752			CONTRACT NO. 76789	

ILLINOIS FED. AID PROJECT