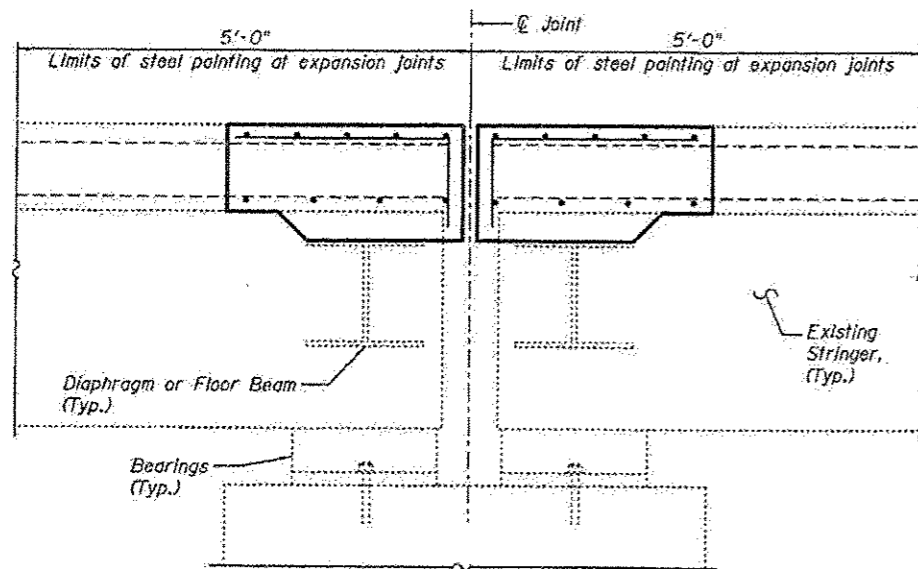


**MAIN SPAN ELEVATION**



**CROSS SECTION AT TYPICAL EXPANSION JOINT**

(Joint at diaphragm shown, joint at floorbeam similar)

**Notes:**

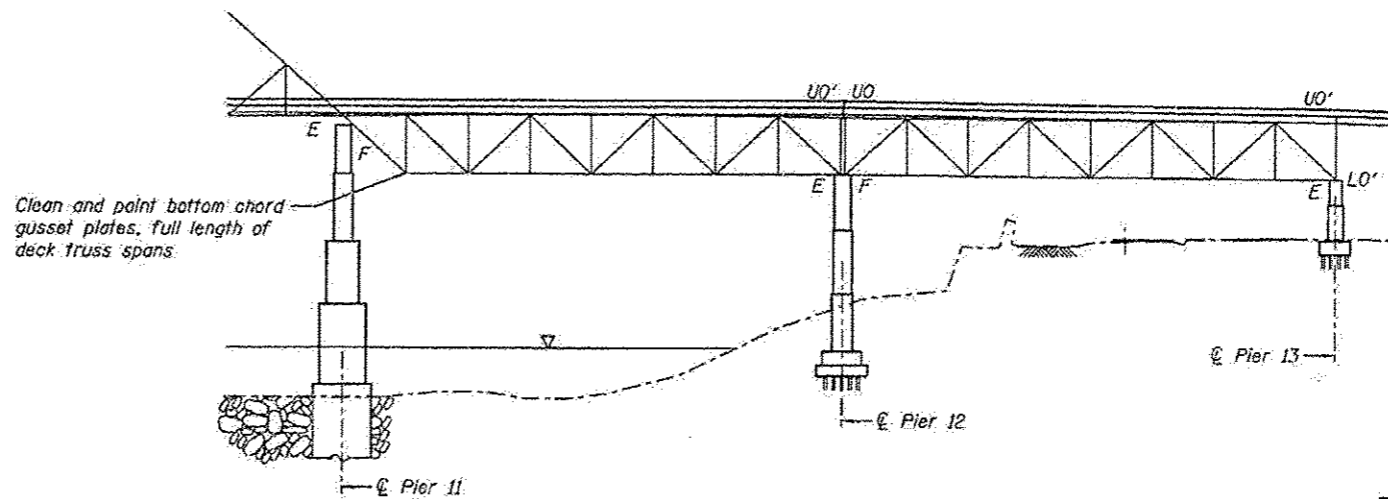
All steel members that are to remain underneath the deck shall be cleaned and painted within 5 ft from any deck joint throughout the entire structure length (including deck relief joints throughout the main spans). This includes all beams, bearings, and other structural steel within 5 ft (measured along the beam) of either side of the joint. In terms of cleaning, the exterior girders, exterior stringers, and floorbeams are considered exterior surfaces.

The entire wind transfer device on the main spans, between PP 21' and PP 23', shall be cleaned and painted including all attachments to other members. See existing 1987 rehabilitation plans for details.

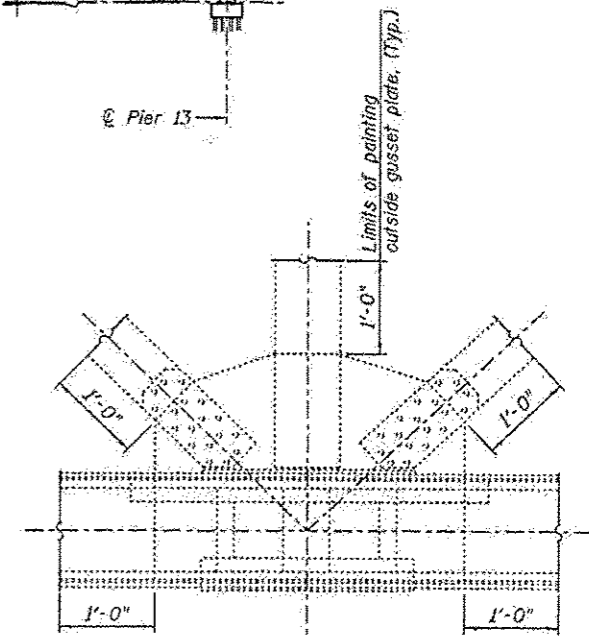
Clean and paint the bottom truss chord and splash zone on each side of the main spans. This shall include all surfaces of each member including inside the bottom chord box member. All truss members shall be painted up to the height of 15 ft from the bottom of the bottom truss chord on each side of the deck. The floorbeam end connections to the bottom chord, the end 5 ft of each floorbeam, the exterior stringer connections to the floorbeams, and the end 5 ft of each exterior stringer shall also be cleaned and painted. In terms of cleaning, the members within the splash zone are considered exterior surfaces.

Clean and paint all bottom chord gusset plates throughout the limits of the deck truss spans. All members connected by the gusset plates shall be painted to a distance 1 ft beyond the limits of the gusset plates. In terms of cleaning, the bottom chord gusset plates and connected members to be painted on the deck truss are considered exterior surfaces.

Clean and paint the end 8 ft of Stringer 1 on Span 19 at Bent 18. In terms of cleaning, this exterior stringer is an exterior surface.



**DECK TRUSS ELEVATION**



**TYPICAL DECK TRUSS GUSSET PLATE**

**BILL OF MATERIAL**

Item	Unit	Total
Cleaning and Painting Steel Bridge No. 1	L. Sum	1
Containment and Disposal of Lead Paint Cleaning Residues No. 1	L. Sum	1

The Contractor shall match the color of the final finish coat for all steel surfaces to the existing paint color on the structure.

The existing structural steel coating contains lead. The Contractor shall take appropriate precautions to deal with the presence of lead on this project as specified in the special provision for Containment and Disposal of Lead Paint Cleaning Residues.

Cleaning and painting of the existing structural steel shall be as specified in the special provision for Cleaning and Painting Existing Steel Structures. See sheet S3 of S138 for cleaning requirements.

Complete cost of painting the locations described on this sheet shall be considered included with the pay item Cleaning and Painting Steel Bridge No. 1.

Cleaning of existing structural steel in the areas of structural repairs or new structural installations shall be as specified in the special provision for Cleaning and Painting Contact Surface Areas of Existing Steel Structures.

Calendar date painting restrictions will be waived for this project. See special provisions.

Complete cost of painting repair areas shown throughout the plans shall be considered included with the pay item Structural Steel Repair.

The removal and disposal of the existing lead paint shall be considered included with the pay item Containment and Disposal of Lead Paint Cleaning Residues No. 1.

USER NAME *	DESIGNED - JJA	REVISED - 11/13/2014 JMH
FILE NAME *	CHECKED - TBP	REVISED -
PLOT SCALE *	DRAWN - AJF	REVISED -
PLOT DATE *	CHECKED - VPT	REVISED -

F.A.P. RTE. 799	SECTION 1BR, DR5-2	COUNTY ST. CLAIR	TOTAL SHEETS 196	SHEET NO. 106
CONTRACT NO. 76803				ILLINOIS FED. AID PROJECT