

F.A. RTE.	SECTION	COUNTY	TOTAL SHEETS	SHEET NO.
*	4-Q-1/10-3BR-1	JERSEY/RANDOLPH	7	1
* FAP 304/ FAS 1857A		ILLINOIS	CONTRACT NO. 76H29	

STATE OF ILLINOIS
DEPARTMENT OF TRANSPORTATION
DIVISION OF HIGHWAYS

**PROPOSED
HIGHWAY PLANS**

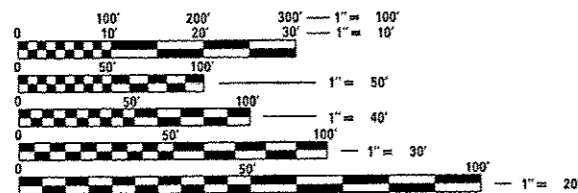
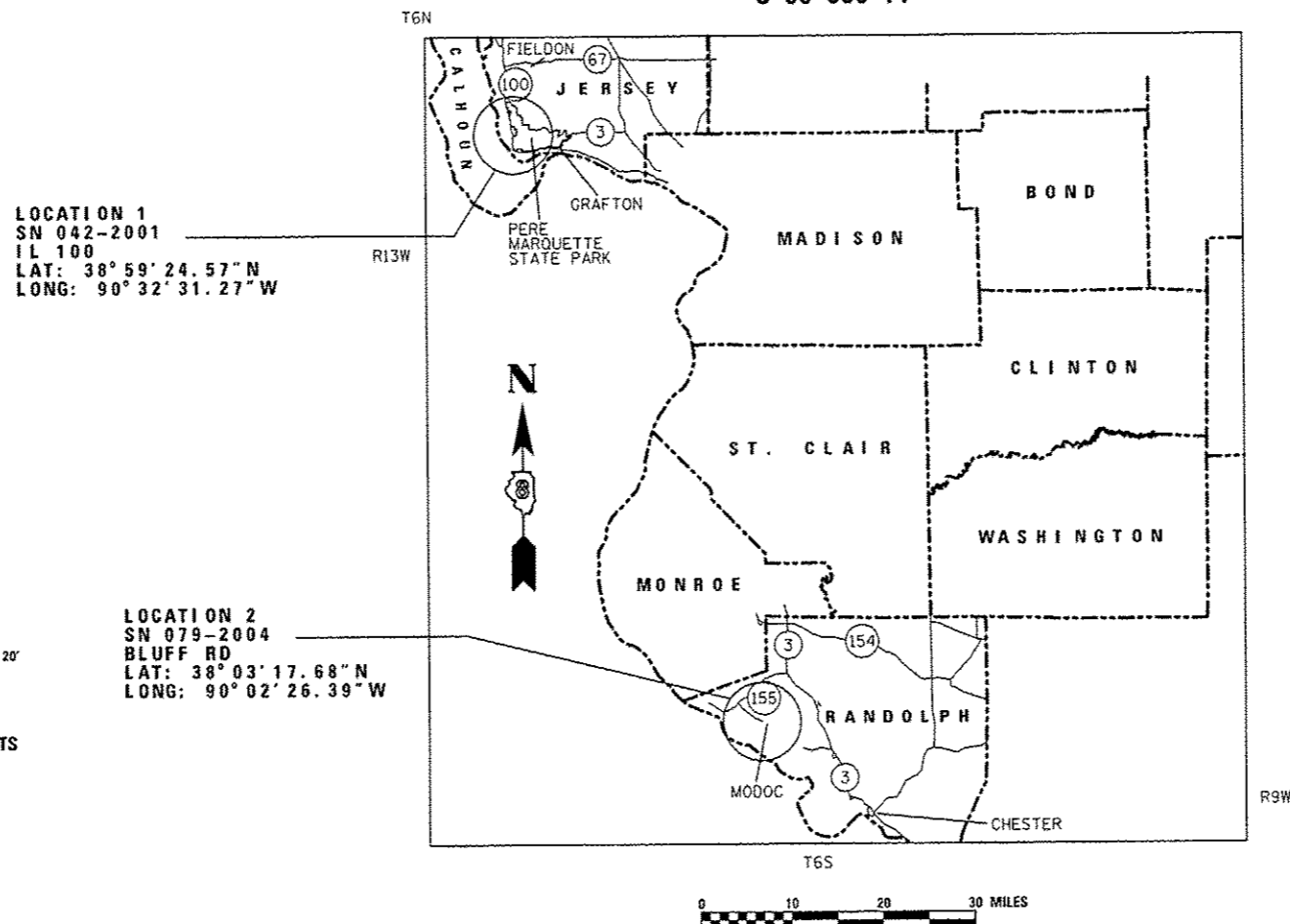
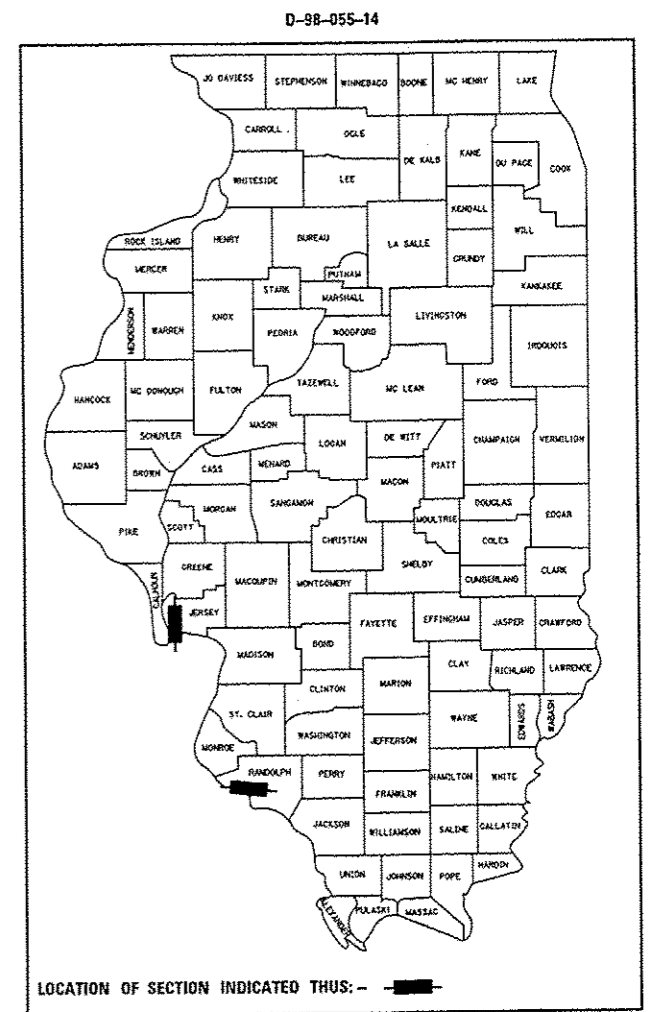
FAP ROUTE 304 /FAS ROUTE 1857A (IL 100/
BLUFF ROAD)
SECTION 4-Q-I, 10-3BR-I

RIP RAP & CULVERT CLEANING
JERSEY & RANDOLPH COUNTIES

C-98-056-14

INDEX OF SHEETS

- 1 COVER SHEET/ INDEX OF SHEETS
- 2 HIGHWAY STANDARDS, GENERAL NOTES, AND COMMITMENTS
- 3 SUMMARY OF QUANTITIES
- 4 LOCATION MAP AND SCHEDULES
- 5 SN 042-2001 (IL 100) PLAN SHEET
- 6-7 SN 079-2004 (BLUFF ROAD) PLAN SHEET



FULL SIZE PLANS HAVE BEEN PREPARED USING STANDARD ENGINEERING SCALES. REDUCED SIZED PLANS WILL NOT CONFORM TO STANDARD SCALES. IN MAKING MEASUREMENTS ON REDUCED PLANS, THE ABOVE SCALES MAY BE USED.

J.U.L.I.E.
JOINT UTILITY LOCATION INFORMATION FOR EXCAVATION
1-800-892-0123
OR 811

PROJECT ENGINEER: TIM PADGETT 618-346-3325
PROJECT MANAGER: PHILIP COPPERNOLL 618-346-3480

CONTRACT NO. 76H29

GROSS LENGTH = 71.20 FT. = 0.013 MILE
NET LENGTH = 71.20 FT. = 0.013 MILE

STATE OF ILLINOIS
DEPARTMENT OF TRANSPORTATION
DIVISION OF HIGHWAYS

SUBMITTED *July 24 2014*
John Z. Ka...
DEPUTY DIRECTOR OF HIGHWAYS, REGION 5 ENGINEER

Oct 17 2014
John D. Baranzelli PE
ENGINEER OF DESIGN AND ENVIRONMENT

Oct 17 2014
Omer Osman PE
DIRECTOR OF HIGHWAYS, CHIEF ENGINEER

**PRINTED BY THE AUTHORITY
OF THE STATE OF ILLINOIS**